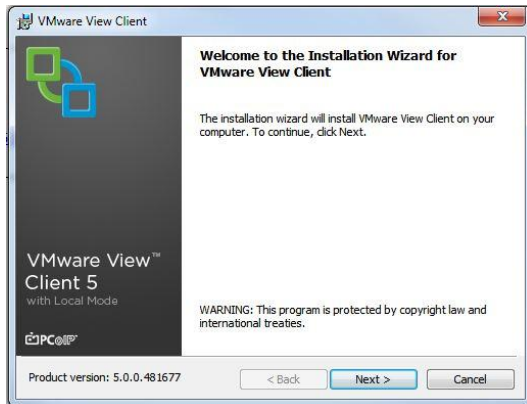
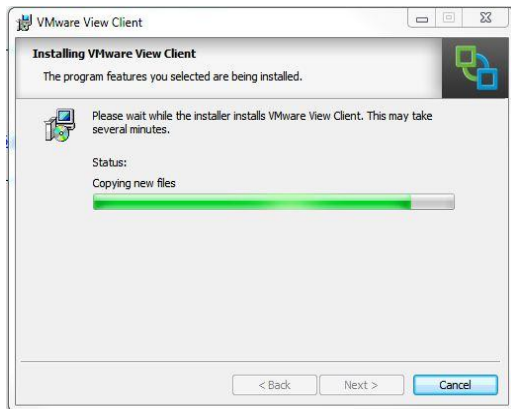


## Starting Procedures for VMware Client

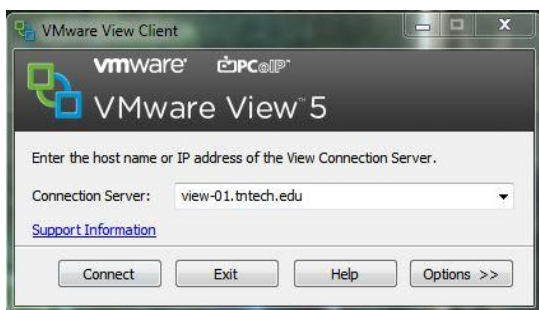
1. Navigate with your Internet browser to <http://www.tntech.edu/engineering/home/> and under the **Innovations** tab select the appropriate **View Client** file to download based on your operating system. Links to App stores are also included for various platforms and installation should be carried out automatically from the App store.
2. Launch the downloaded program
3. Click next to continue



4. Then click next on next 3 screens
5. Enter **view-01.tntech.edu** when presented with the **Connection Server** screen.
6. Click next on Enhanced single mode and Configure shortcuts
7. Click install on Ready to install the program



8. Click Finish on Installer completed and restart your system if required
9. After restart, double click the VMware View Client icon
10. View-01.tntech.edu should be in the connection server box as shown below. Click Connect.



11. Enter your TTU credentials and select TTU in the Domain field
12. Click **Login** and select a machine from the available pools