



## IR SERIES

*Office of Institutional Research - Box 5161 - 372-6144  
Tennessee Technological University*

Vol. 08-09, No. 09

December 16, 2008

---

### **Enrollment Trends, 1999-2008**

This report contains trend information about enrollment for the ten Fall semesters of 1999 through 2008.

## Tables and Figures

### University Enrollment and FTE Enrollment

A.	Fall Enrollment, 1999 – 2008 .....	3
----	------------------------------------	---

### Enrollment

B.1.	Enrollment by Level.....	4
B.2.a.	Undergraduates by Unit .....	5
B.2.b.	Graduate Students by Unit.....	6
B.2.c.	Enrollment by Unit.....	7
B.3.	New Student Enrollment .....	8
B.4.a.	First-Time Freshmen by Unit.....	9
B.4.b.	Transfer Students by Unit .....	10
B.4.c.	New Graduate Students by Unit .....	11
B.5.	Unit Enrollment.....	12

### Full-Time-Equivalent Enrollment

C.1.	FTE Enrollment by Level.....	19
C.2.a.	Undergraduate FTE Enrollment by Unit.....	20
C.2.b.	Graduate FTE Enrollment by Unit.....	21
C.2.c.	FTE Enrollment by Unit .....	22
C.3.	Unit FTE Enrollment.....	23

### Course Load

D.1.	Enrollment by Level and Course Load.....	27
D.2.a.	First-Time Freshman Course Load and Attempted Hours .....	28
D.2.b.	Transfer Student Course Load and Attempted Hours.....	29
D.2.c.	Undergraduate Student Course Load and Attempted Hours .....	30
D.2.d.	Graduate Student Course Load and Attempted Hours .....	31

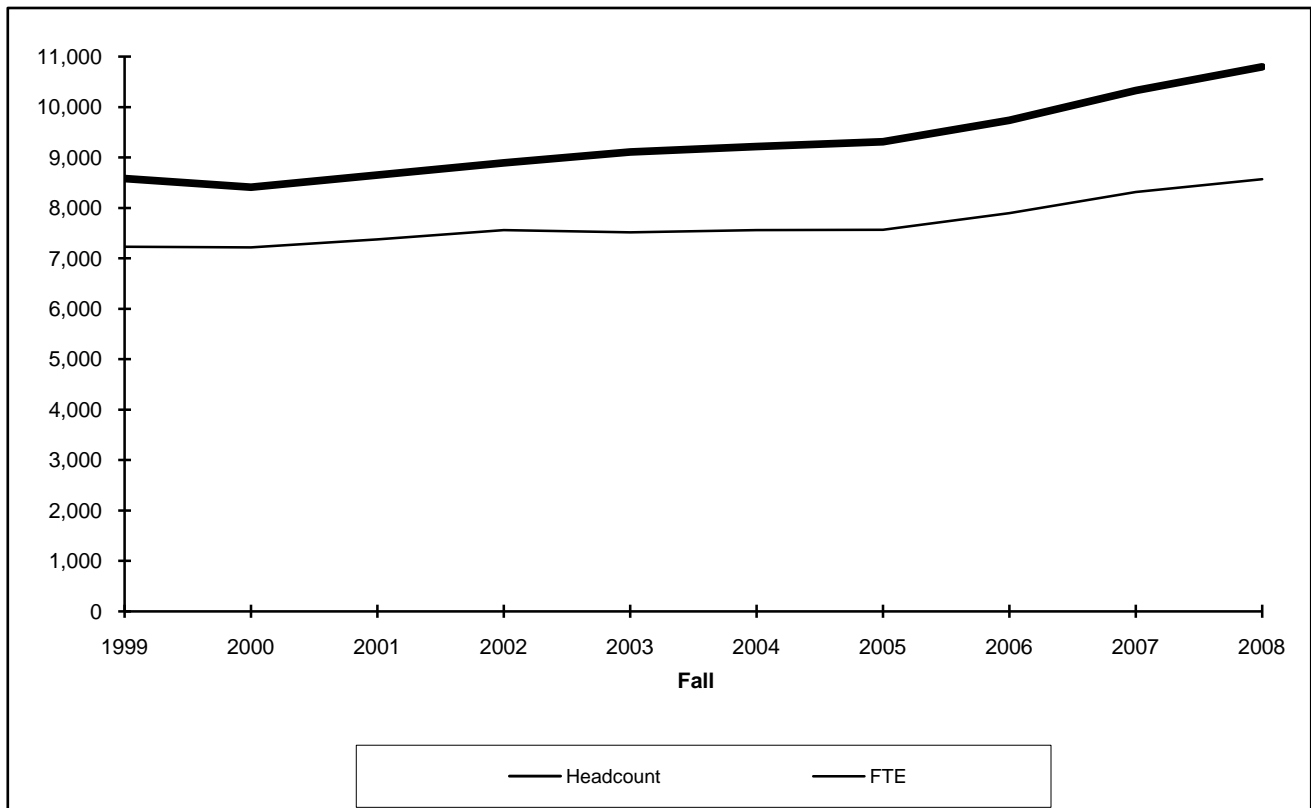
### On/Off Campus FTE Enrollment

E.1.a.	FTE Enrollment By Instructional Site Type .....	32
E.1.b.	SCH By Instructional Site Type .....	33
E.2.	Main Campus Without Distance Education FTE Enrollment .....	34
E.3.a.	Undergraduate Off-Campus Without Distance Education FTE Enrollment .....	35
E.3.b.	Graduate Off-Campus Without Distance Education FTE Enrollment .....	36
E.3.c.	Off-Campus Without Distance Education FTE Enrollment.....	37
E.3.d.	Undergraduate Distance Education FTE Enrollment.....	38
E.3.e.	Graduate Distance Education FTE Enrollment.....	39
E.3.f.	Distance Education FTE Enrollment.....	40

## A. Fall Enrollment, 1999 - 2008

Headcount	1999	2000	2001	2002	2003	2004	2005	2006	2007	2008
Undergraduate	7,043	6,876	7,099	7,251	7,273	7,224	7,255	7,569	8,060	8,438
Graduate	1,541	1,534	1,554	1,639	1,834	1,993	2,058	2,164	2,261	2,355
ALL	8,584	8,410	8,653	8,890	9,107	9,217	9,313	9,733	10,321	10,793

Full-Time-Equivalent	1999	2000	2001	2002	2003	2004	2005	2006	2007	2008
Undergraduate	6,521	6,490	6,621	6,788	6,663	6,589	6,627	6,904	7,301	7,551
Graduate	706	722	751	766	846	969	938	990	1,011	1,016
ALL	7,227	7,212	7,372	7,554	7,509	7,558	7,565	7,894	8,312	8,567



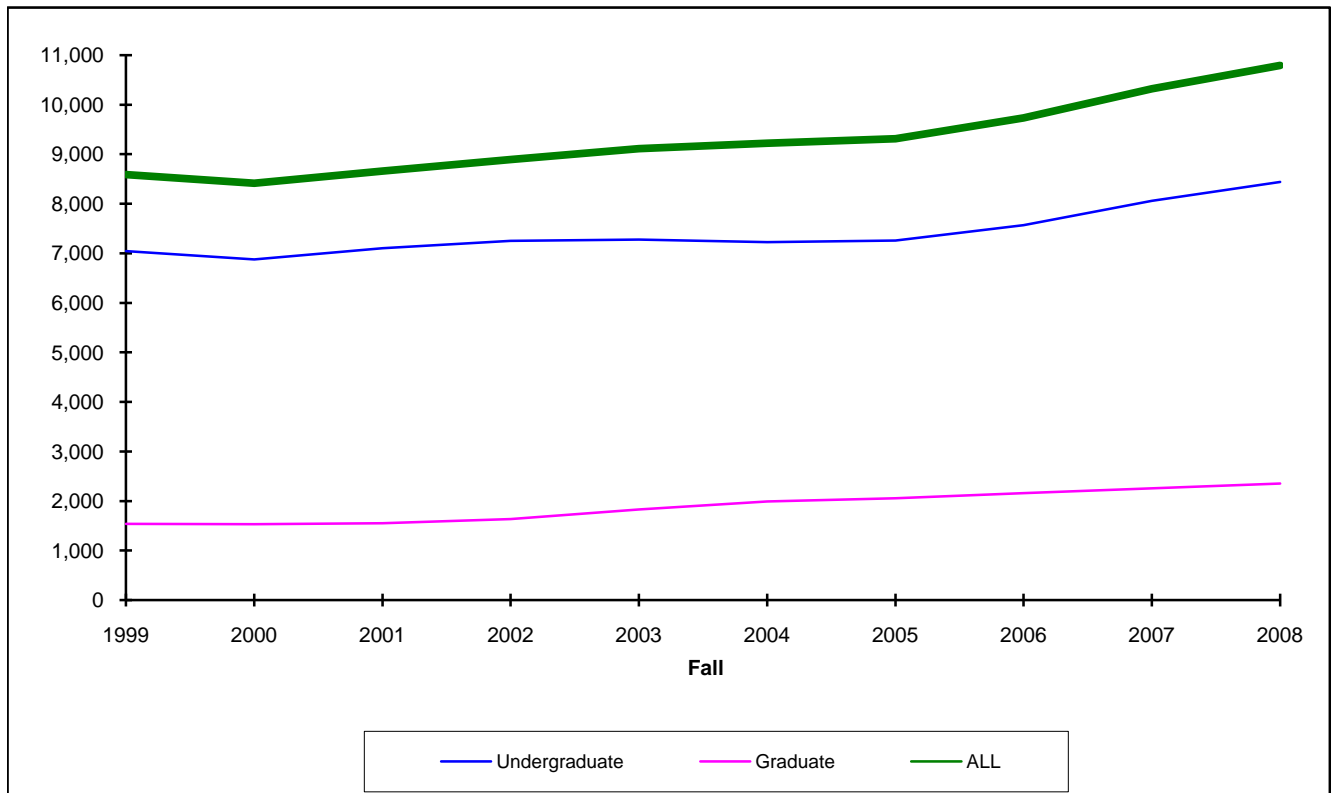
Source: *Enrollment Summary*, Fall 1999 - Fall 2008.

Note: In this table and graph, FTE enrollment was compiled by the level of the **student** and not by the level of the course. Historically, this type of compilation has been used for the first table of the *Enrollment Summary*, and, therefore, has been used for the first table of this report.

After this page (Table and Figure A), all FTE enrollment information in this report was developed using the **course** compilation.

## B.1. Enrollment by Level, Fall 1999-2008

	1999	2000	2001	2002	2003	2004	2005	2006	2007	2008
Undergraduate	7,043	6,876	7,099	7,251	7,273	7,224	7,255	7,569	8,060	8,438
Graduate	1,541	1,534	1,554	1,639	1,834	1,993	2,058	2,164	2,261	2,355
ALL	8,584	8,410	8,653	8,890	9,107	9,217	9,313	9,733	10,321	10,793

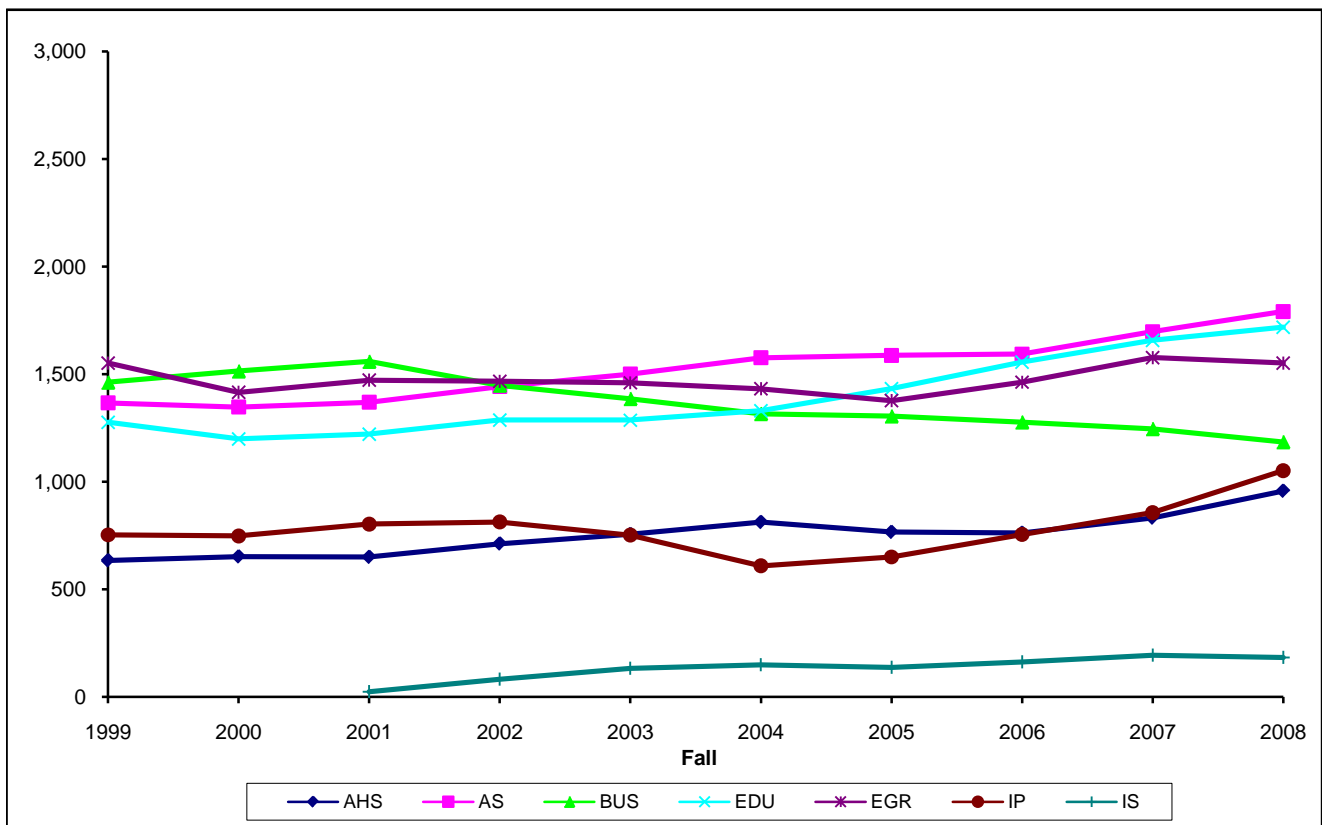


## B.2.a. Undergraduates by Unit, Fall 1999-2008

AHS: Agricultural & Human Sciences  
 A&S: Arts & Sciences  
 BUS: Business Administration  
 EDU: Education

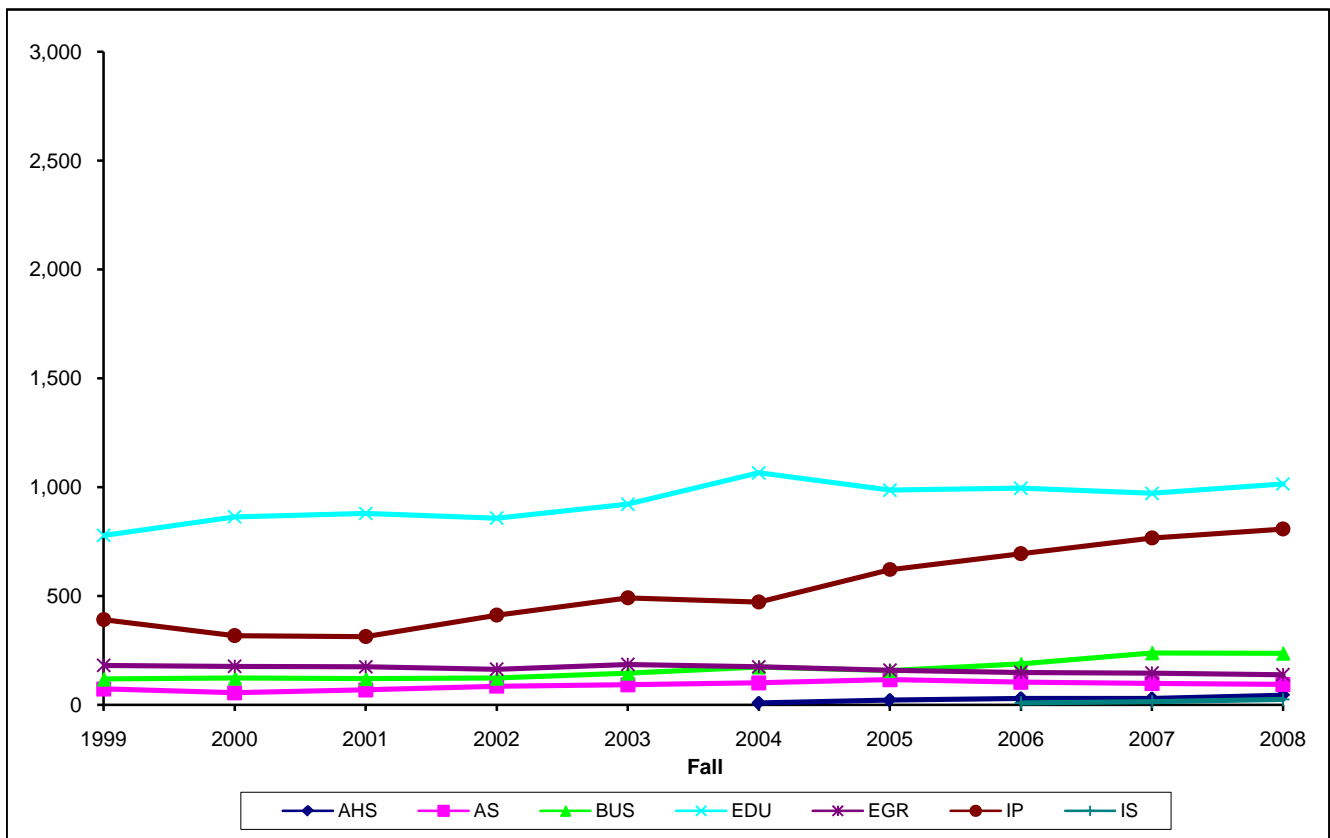
EGR: Engineering  
 IP: Independent Programs  
 IS: Interdisciplinary Studies

	1999	2000	2001	2002	2003	2004	2005	2006	2007	2008
AHS	634	652	650	712	756	812	766	762	832	957
AS	1,366	1,347	1,370	1,442	1,500	1,576	1,587	1,593	1,697	1,791
BUS	1,462	1,514	1,559	1,448	1,386	1,316	1,305	1,277	1,246	1,185
EDU	1,276	1,199	1,221	1,287	1,286	1,330	1,433	1,556	1,657	1,718
EGR	1,552	1,416	1,472	1,467	1,460	1,432	1,377	1,463	1,577	1,552
IP	753	748	803	813	752	609	650	755	857	1,052
IS			24	82	133	149	137	163	194	183
ALL	7,043	6,876	7,099	7,251	7,273	7,224	7,255	7,569	8,060	8,438



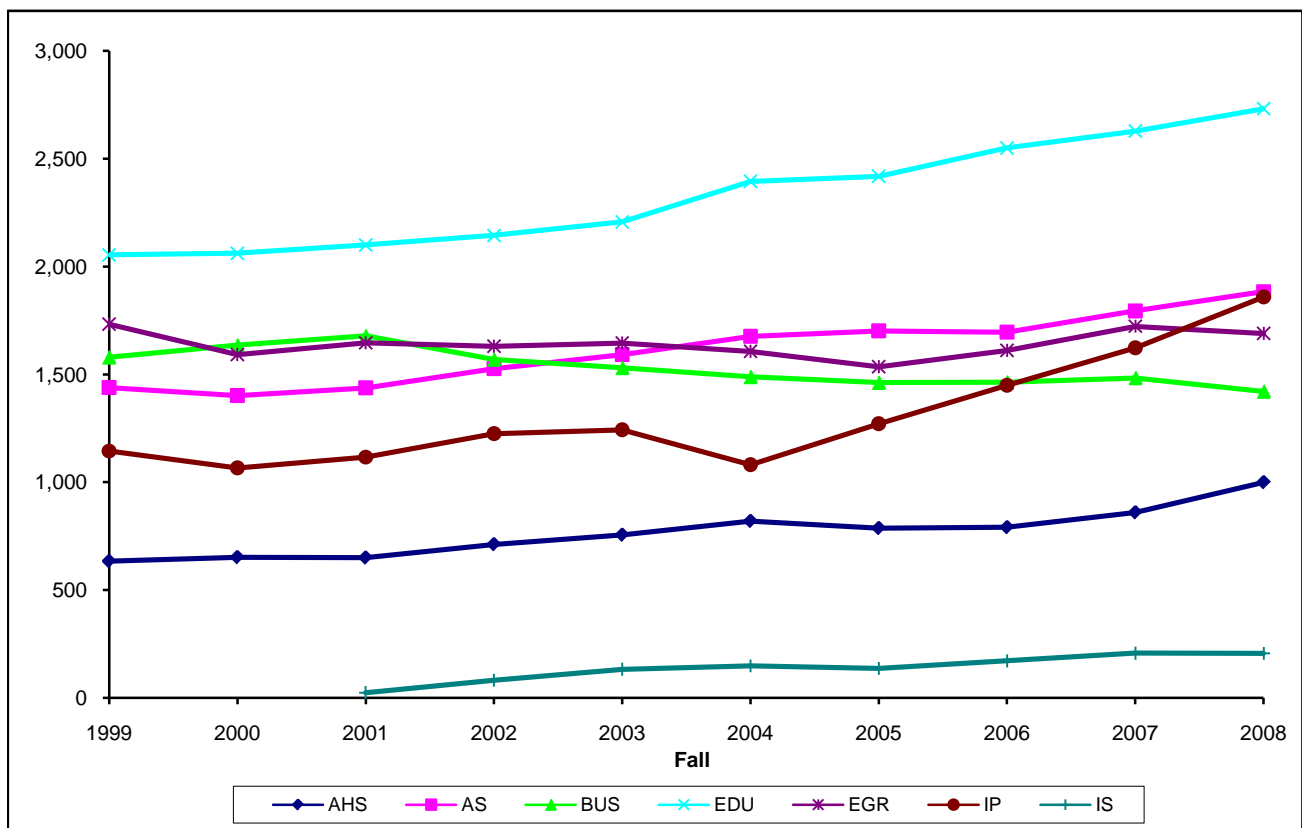
### B.2.b. Graduate Students by Unit, Fall 1999-2008

	1999	2000	2001	2002	2003	2004	2005	2006	2007	2008
AHS						8	21	29	28	43
AS	73	55	68	85	92	101	115	103	98	93
BUS	118	122	120	122	145	173	157	187	238	236
EDU	778	863	879	857	921	1,065	986	994	971	1,014
EGR	181	176	174	163	185	174	158	148	146	138
IP	391	318	313	412	491	472	621	694	766	807
IS								9	14	24
ALL	1,541	1,534	1,554	1,639	1,834	1,993	2,058	2,164	2,261	2,355



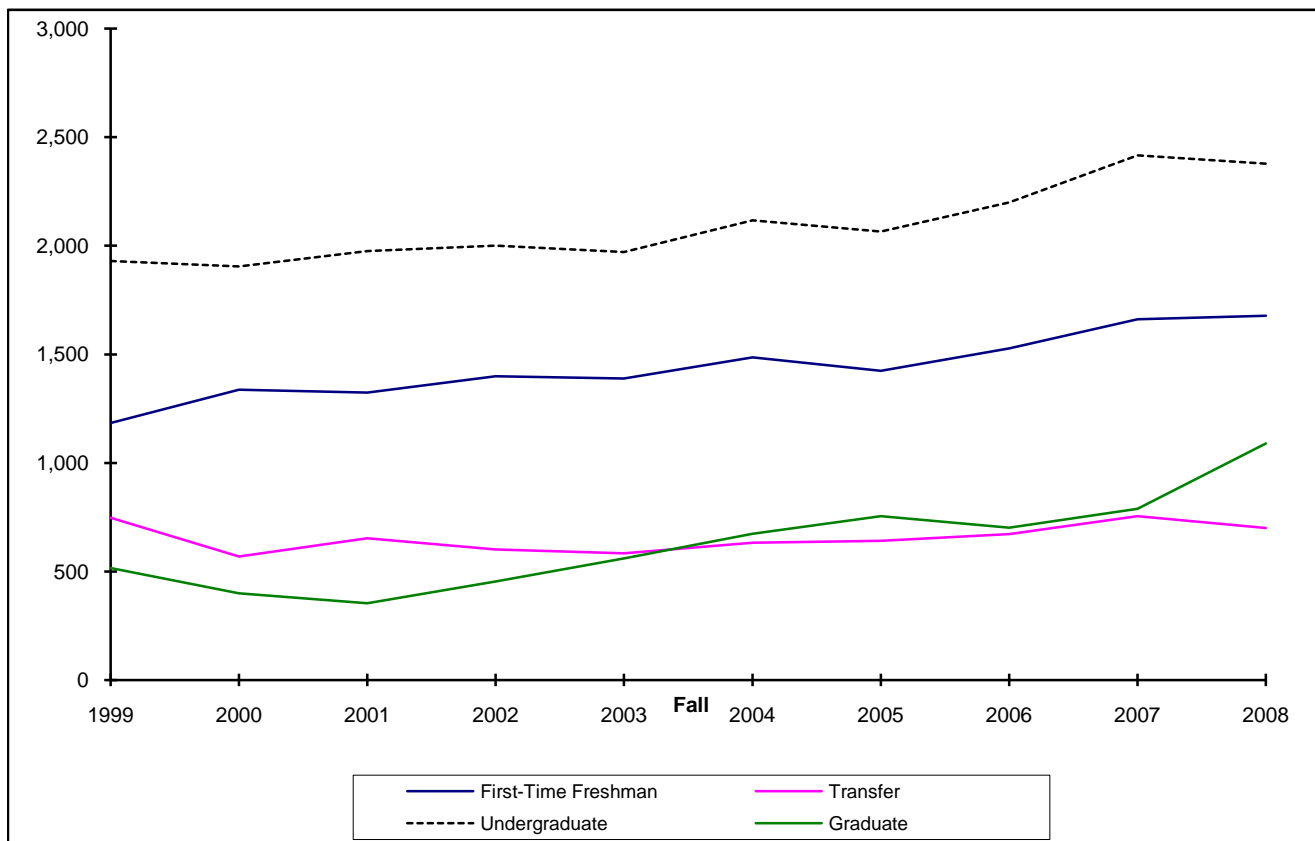
### B.2.c. Enrollment by Unit, Fall 1999-2008

	1999	2000	2001	2002	2003	2004	2005	2006	2007	2008
AHS	634	652	650	712	756	820	787	791	860	1,000
AS	1,439	1,402	1,438	1,527	1,592	1,677	1,702	1,696	1,795	1,884
BUS	1,580	1,636	1,679	1,570	1,531	1,489	1,462	1,464	1,484	1,421
EDU	2,054	2,062	2,100	2,144	2,207	2,395	2,419	2,550	2,628	2,732
EGR	1,733	1,592	1,646	1,630	1,645	1,606	1,535	1,611	1,723	1,690
IP	1,144	1,066	1,116	1,225	1,243	1,081	1,271	1,449	1,623	1,859
IS			24	82	133	149	137	172	208	207
ALL	8,584	8,410	8,653	8,890	9,107	9,217	9,313	9,733	10,321	10,793



### B.3. New Student Enrollment, Fall 1999-2008

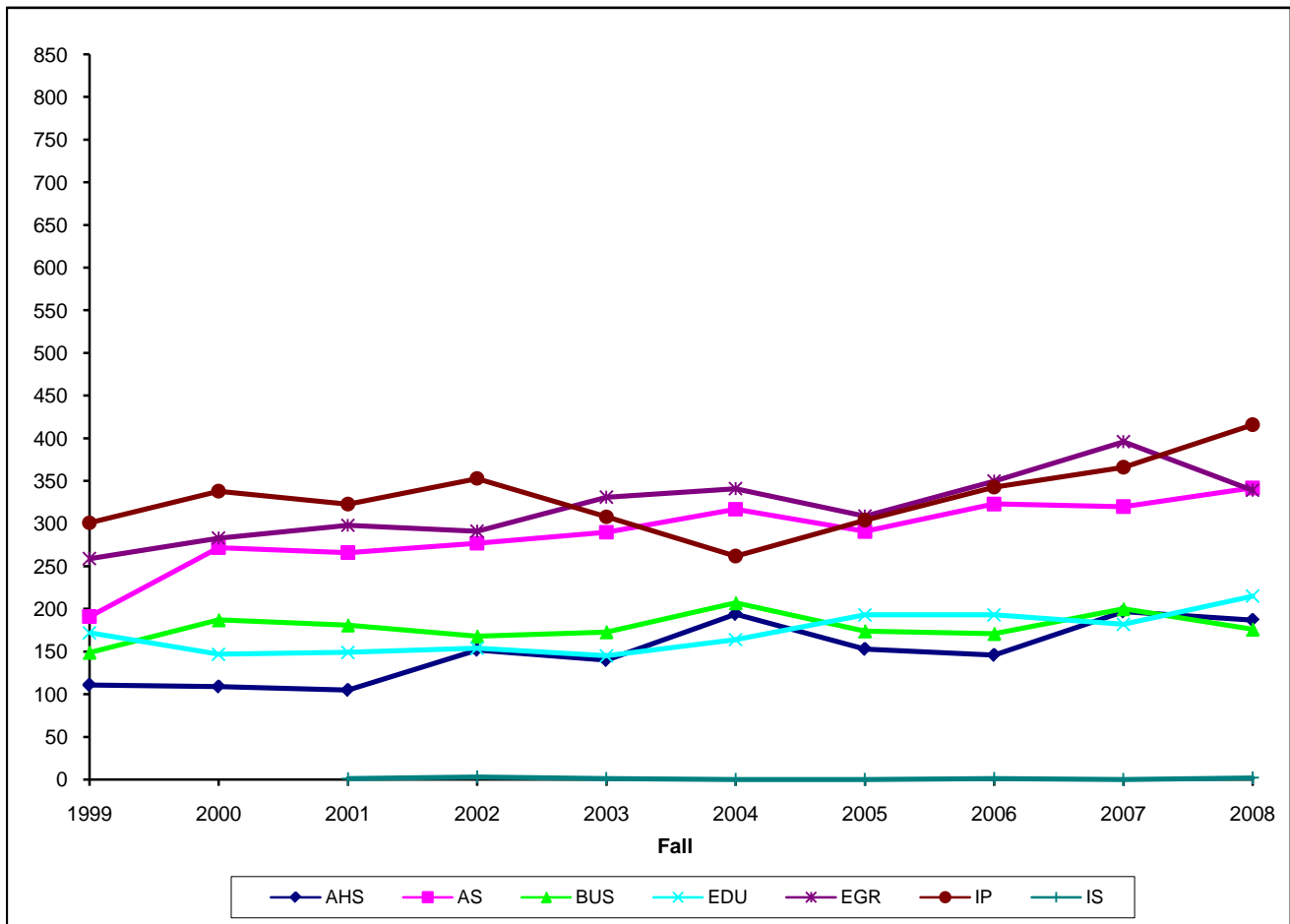
	1999	2000	2001	2002	2003	2004	2005	2006	2007	2008
First-Time Freshman	1,183	1,336	1,323	1,398	1,388	1,485	1,424	1,527	1,661	1,677
Transfer	747	569	653	602	584	632	641	672	755	700
Undergraduate	1,930	1,905	1,976	2,000	1,972	2,117	2,065	2,199	2,416	2,377
Graduate	515	399	353	453	560	673	754	701	788	1,090
ALL	2,445	2,304	2,329	2,453	2,532	2,790	2,819	2,900	3,204	3,467



- Notes:
1. The definition of "first-time freshman" changed in Fall 2000 primarily to be more inclusive of new freshmen who had recently graduated from high school but had earned college credit while concurrently enrolled in high school. This new definition affected the number of "first-time freshmen" as well as the number of transfer students.
  2. Throughout this report, the term "Transfer Student" refers to a new undergraduate transfer student. Returning or continuing students who originally transferred into TTU are not included in the "Transfer Student" category in this report.
  3. "Undergraduate" in the above table and graph is the sum of the students in the "First-Time Freshman" and "Transfer Student" categories. New undergraduate students who are categorized as Special Students are not included in the "Undergraduate" category for tables and graphs about new student enrollment throughout this report.

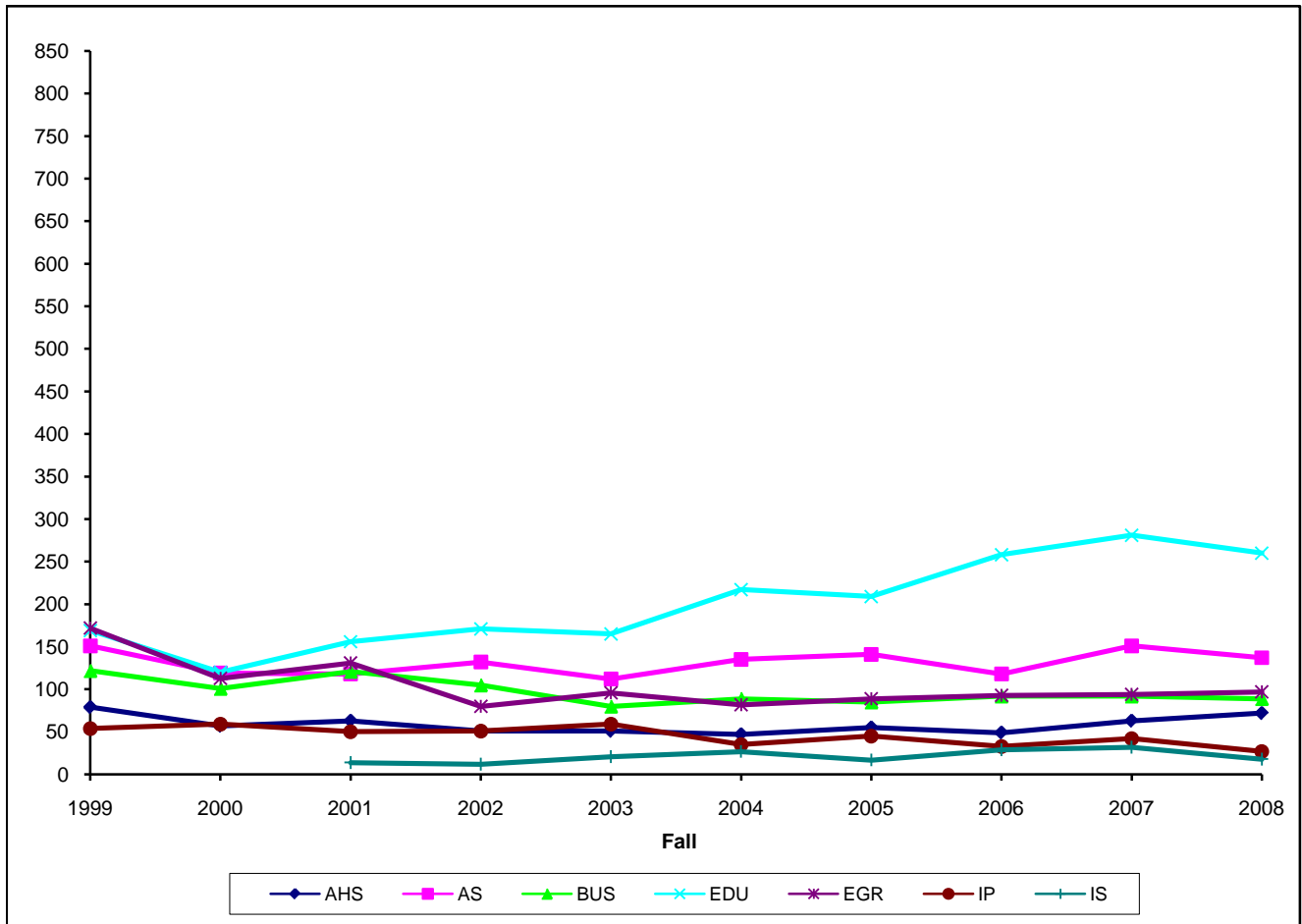
### B.4.a. First-Time Freshmen by Unit, Fall 1999-2008

	1999	2000	2001	2002	2003	2004	2005	2006	2007	2008
AHS	111	109	105	152	140	194	153	146	197	187
AS	191	272	266	277	290	317	291	323	320	342
BUS	149	187	181	168	173	207	174	171	200	176
EDU	172	147	149	154	145	164	193	193	182	215
EGR	259	283	298	291	331	341	309	350	396	339
IP	301	338	323	353	308	262	304	343	366	416
IS			1	3	1	0	0	1	0	2
ALL	1,183	1,336	1,323	1,398	1,388	1,485	1,424	1,527	1,661	1,677



### B.4.b. Transfer Students by Unit, Fall 1999-2008

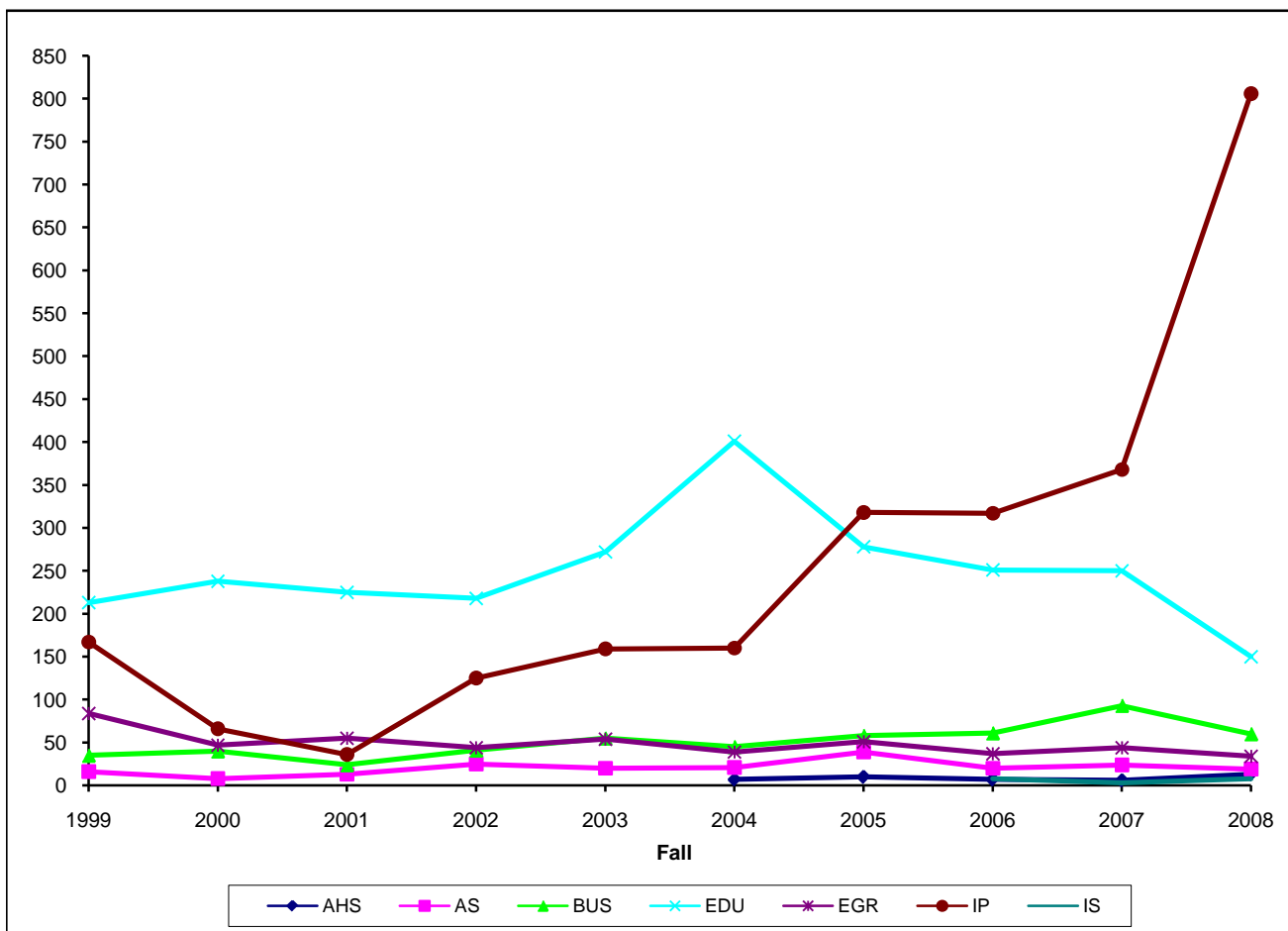
	1999	2000	2001	2002	2003	2004	2005	2006	2007	2008
AHS	79	57	63	51	51	47	55	49	63	72
AS	151	119	118	132	112	135	141	118	151	137
BUS	122	101	121	105	80	89	85	92	92	89
EDU	169	120	156	171	165	217	209	258	281	260
EGR	172	113	131	80	96	82	89	93	94	97
IP	54	59	50	51	59	35	45	33	42	27
IS			14	12	21	27	17	29	32	18
ALL	747	569	653	602	584	632	641	672	755	700



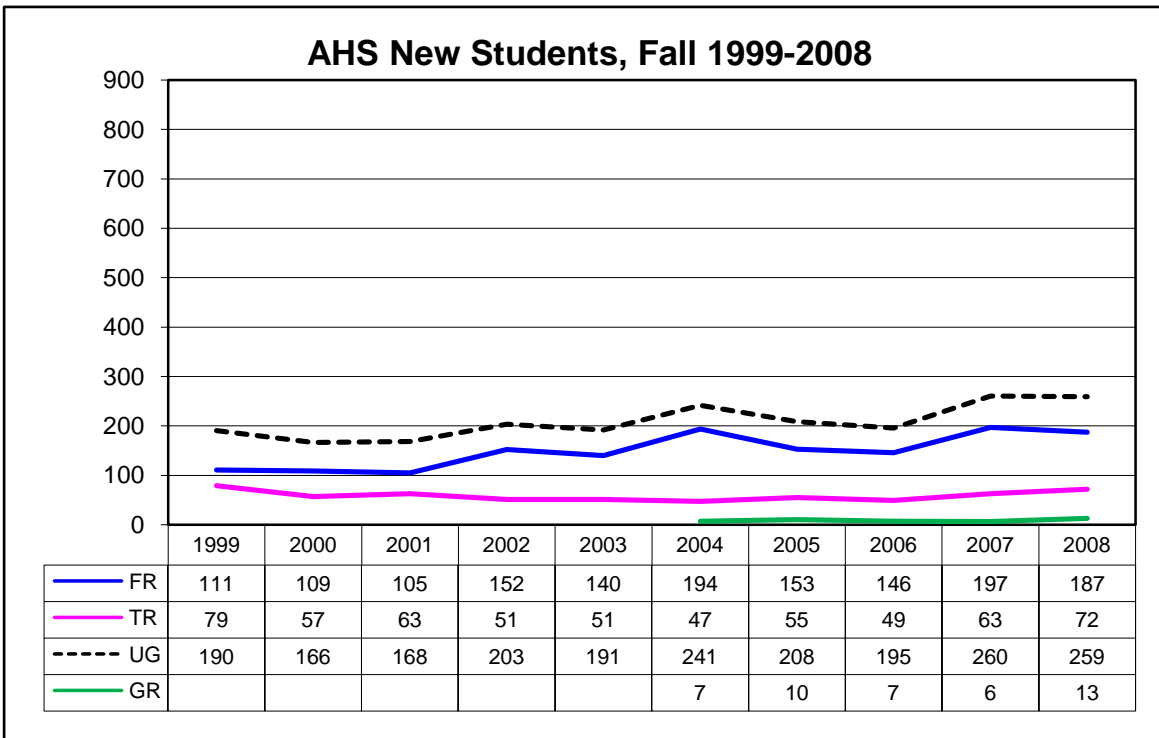
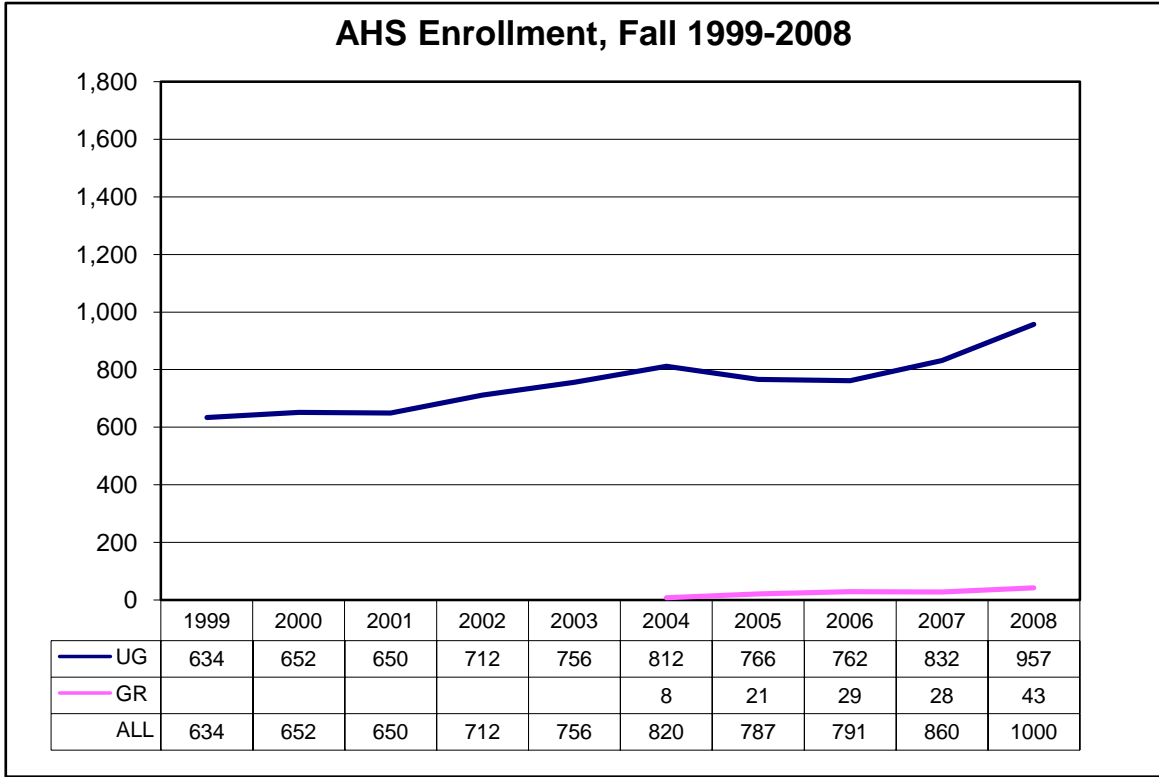
Note: Throughout this report, the term "Transfer Student" refers to a new undergraduate transfer student. Returning or continuing students who originally transferred into TTU are not included in the "Transfer Student" category in this report.

### B.4.c. New Graduate Students by Unit, Fall 1999-2008

	1999	2000	2001	2002	2003	2004	2005	2006	2007	2008
AHS						7	10	7	6	13
AS	16	8	13	25	20	21	39	20	24	19
BUS	35	40	24	41	55	45	58	61	93	60
EDU	213	238	225	218	272	401	278	251	250	150
EGR	84	47	55	44	54	39	51	37	44	34
IP	167	66	36	125	159	160	318	317	368	806
IS								8	3	8
ALL	515	399	353	453	560	673	754	701	788	1,090



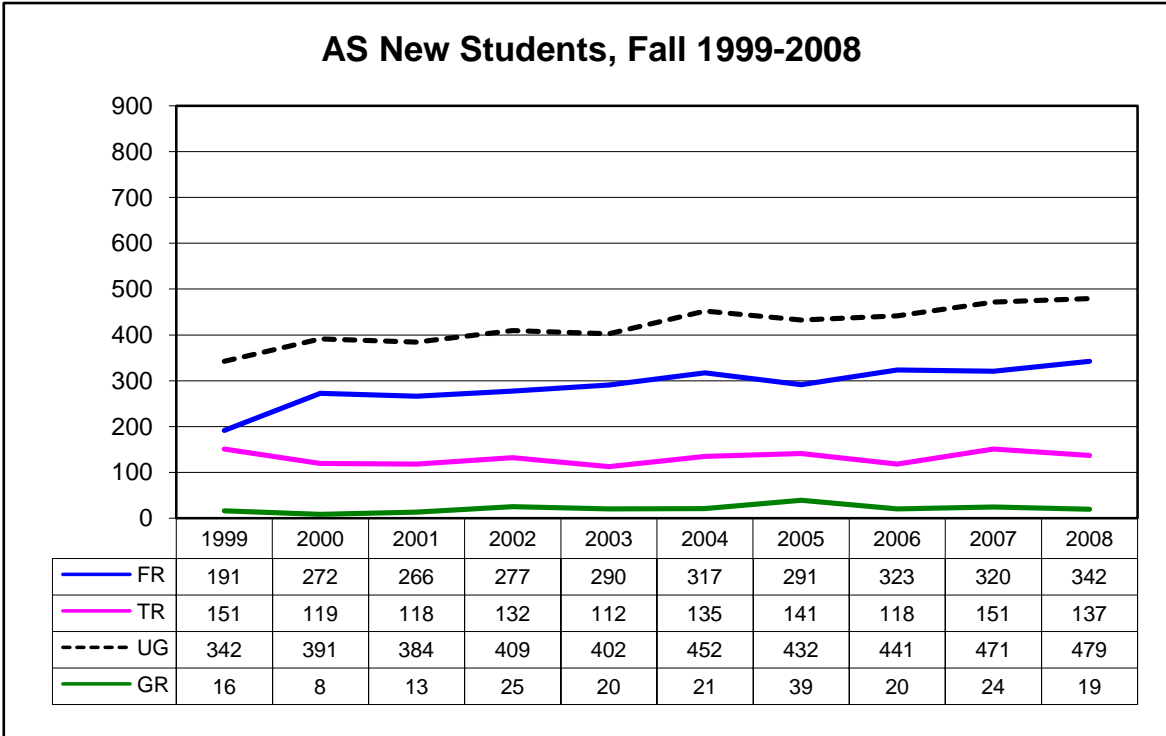
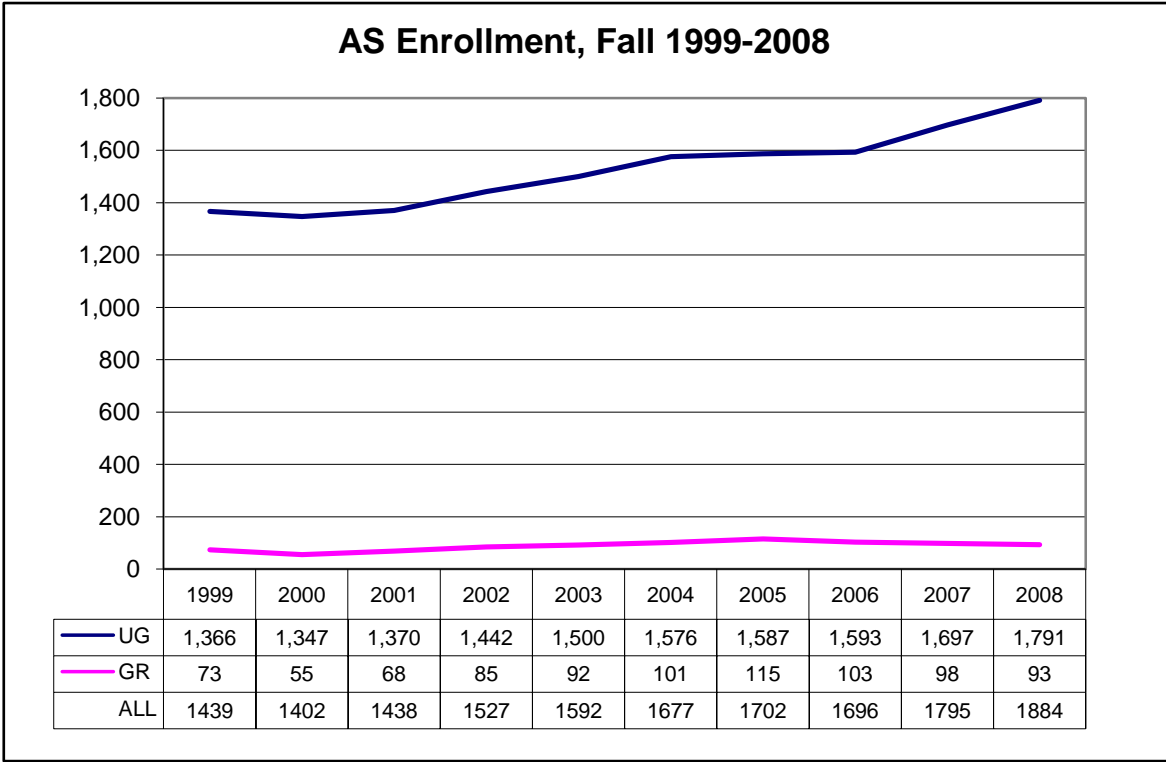
**B.5.**



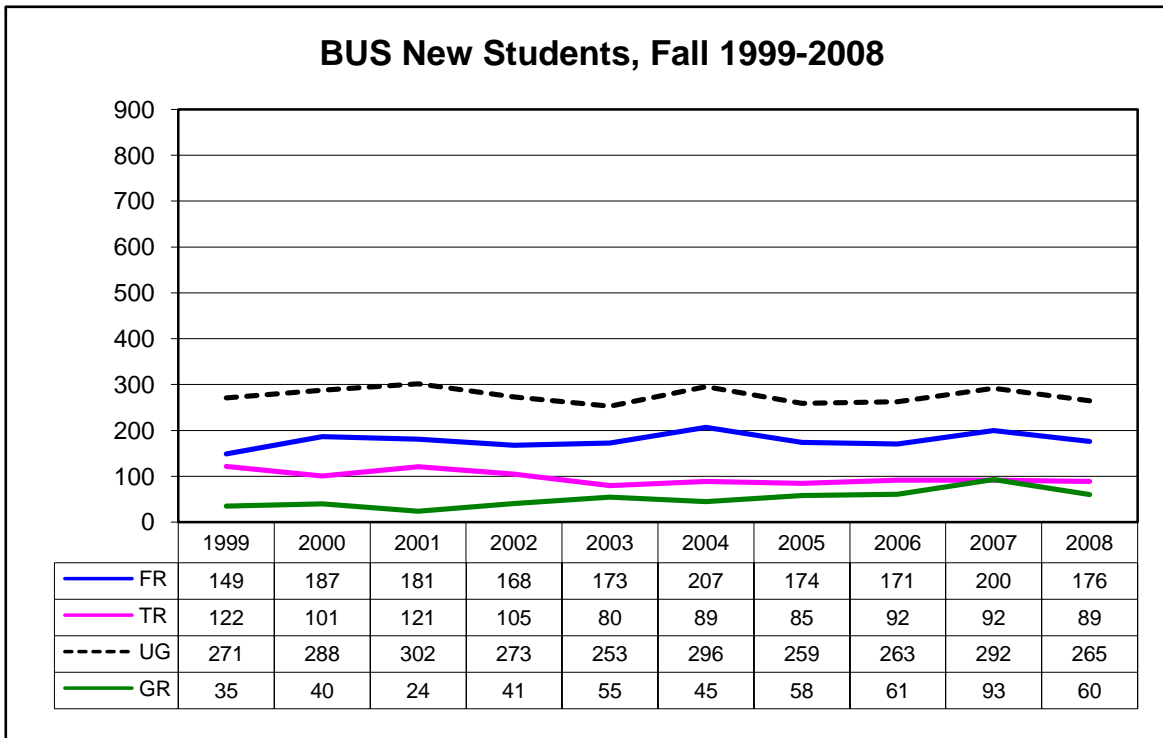
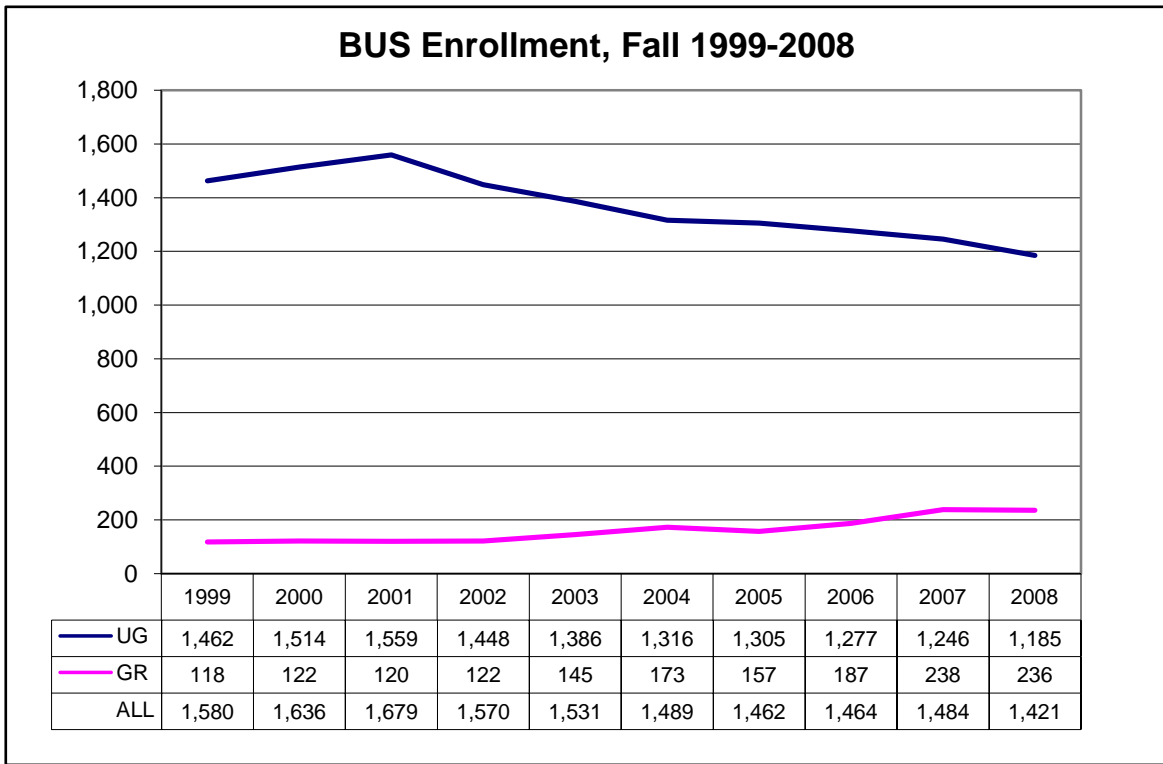
FR = First-Time Freshman  
TR = Transfer

UG = Undergraduate  
GR = Graduate

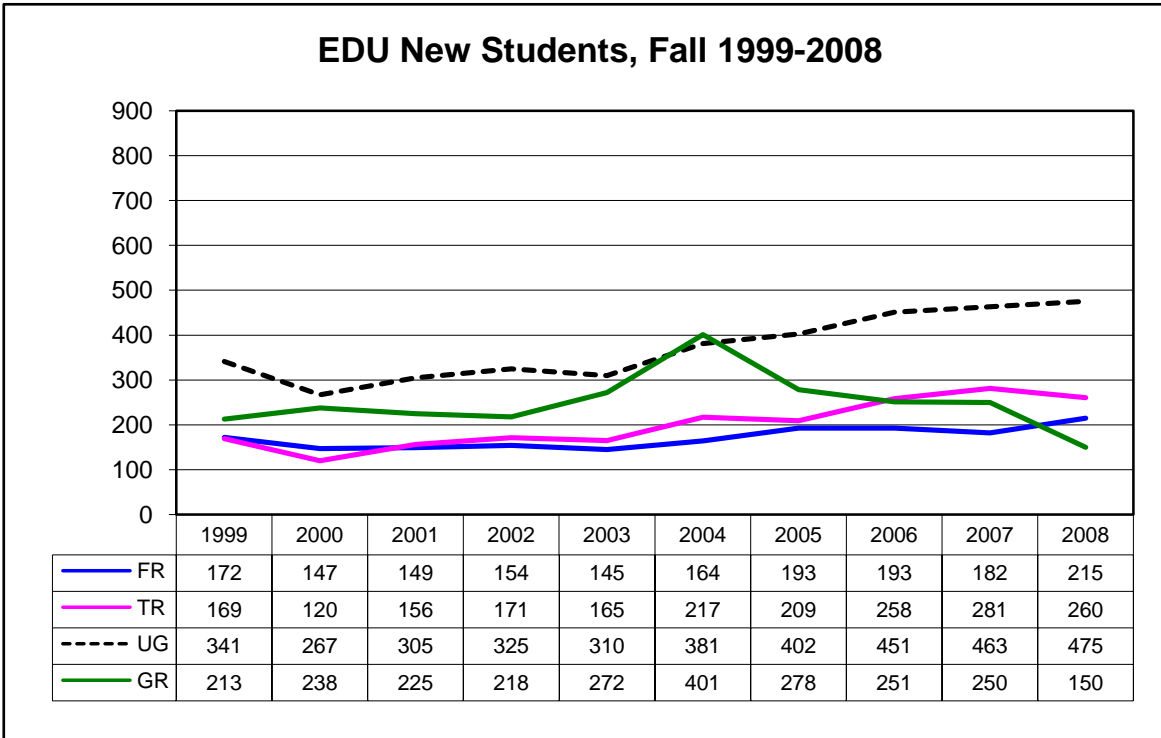
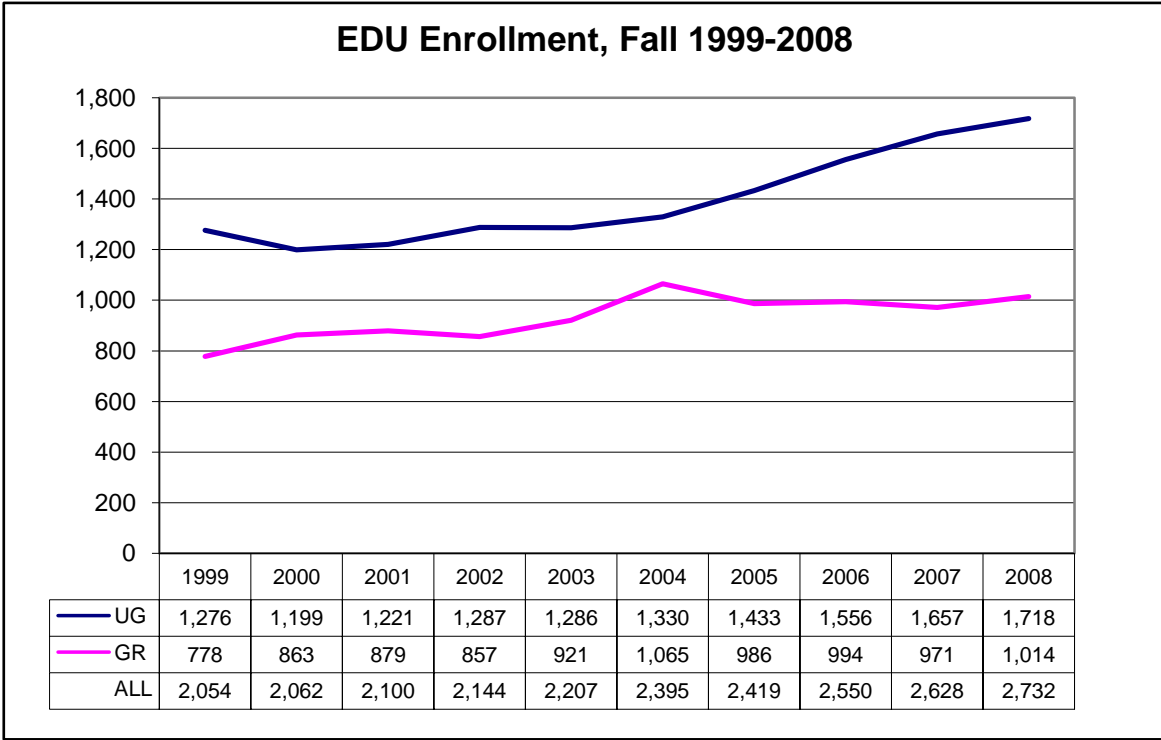
**B.5.**



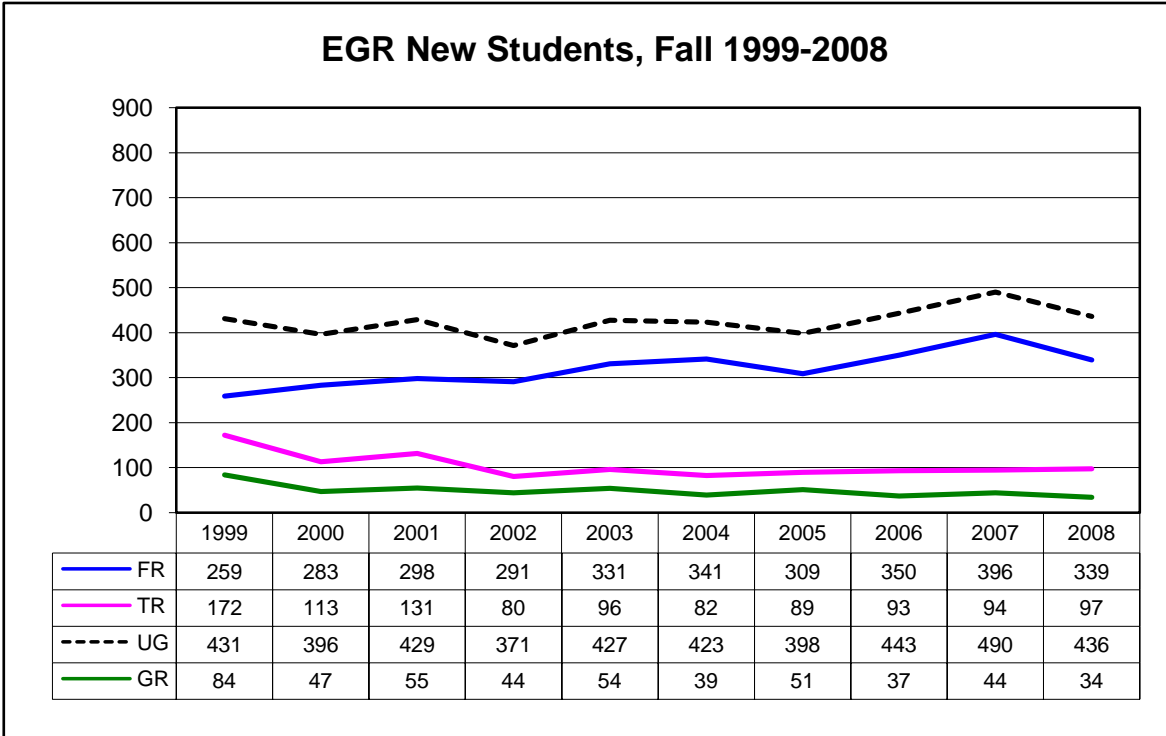
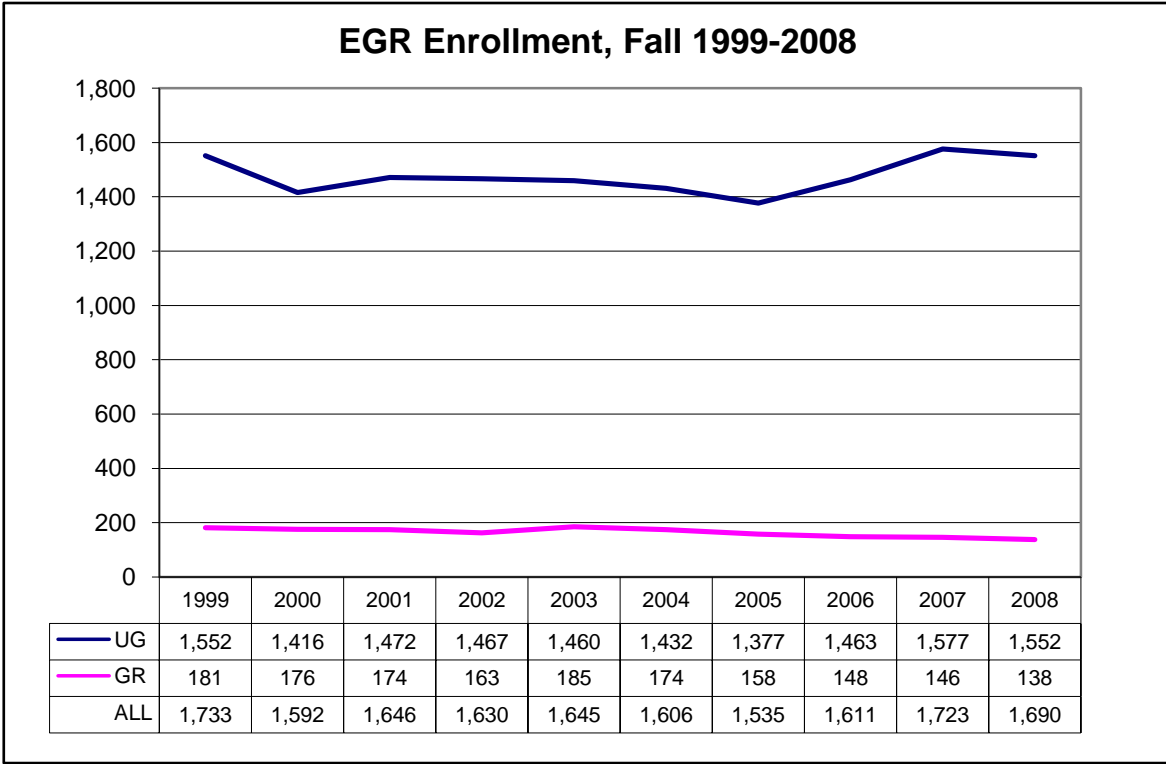
**B.5.**



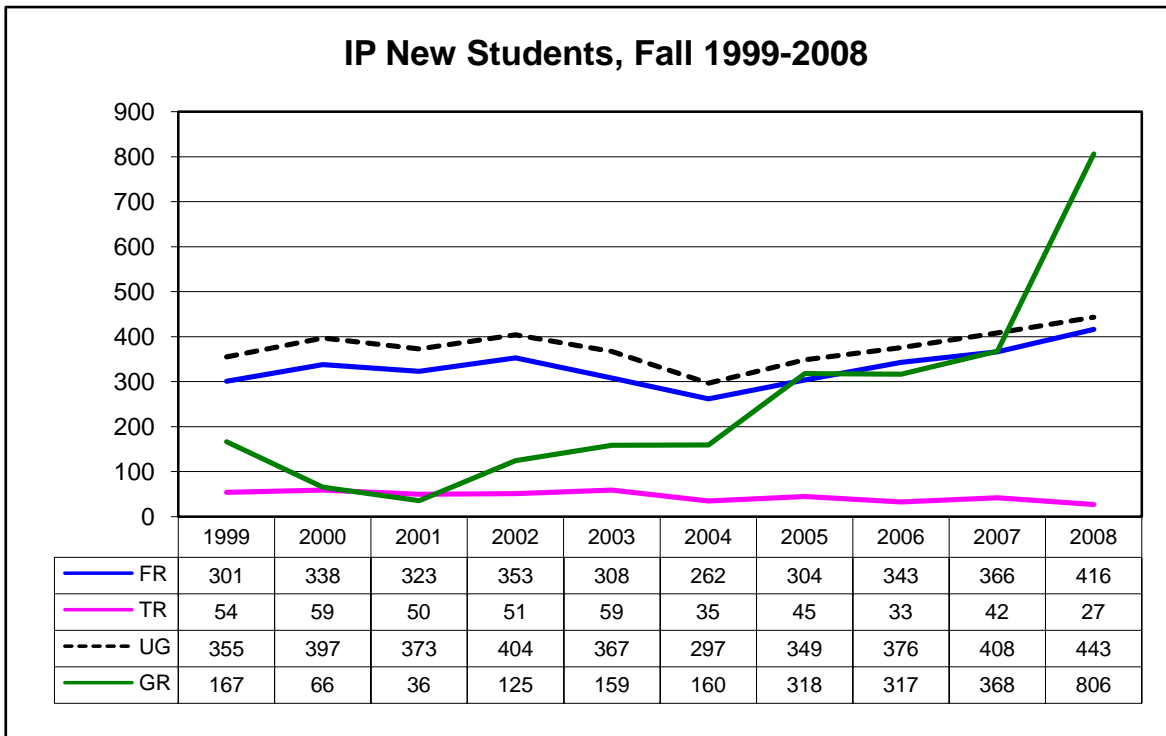
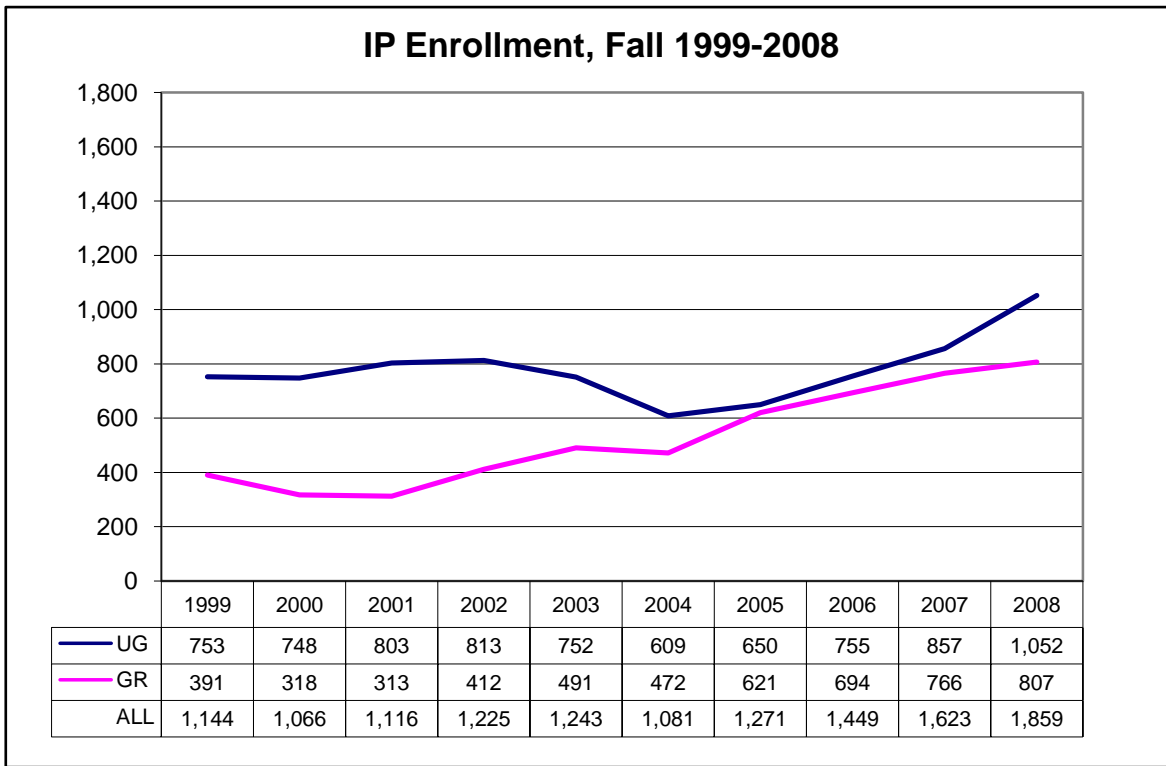
**B.5.**



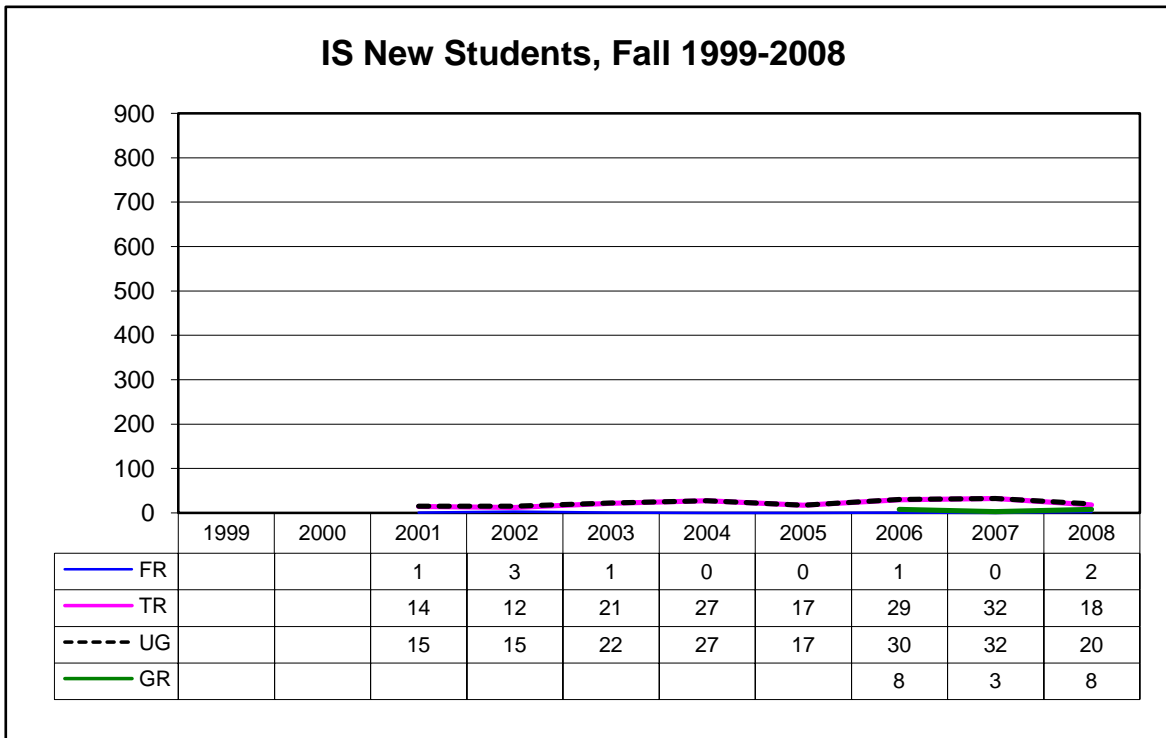
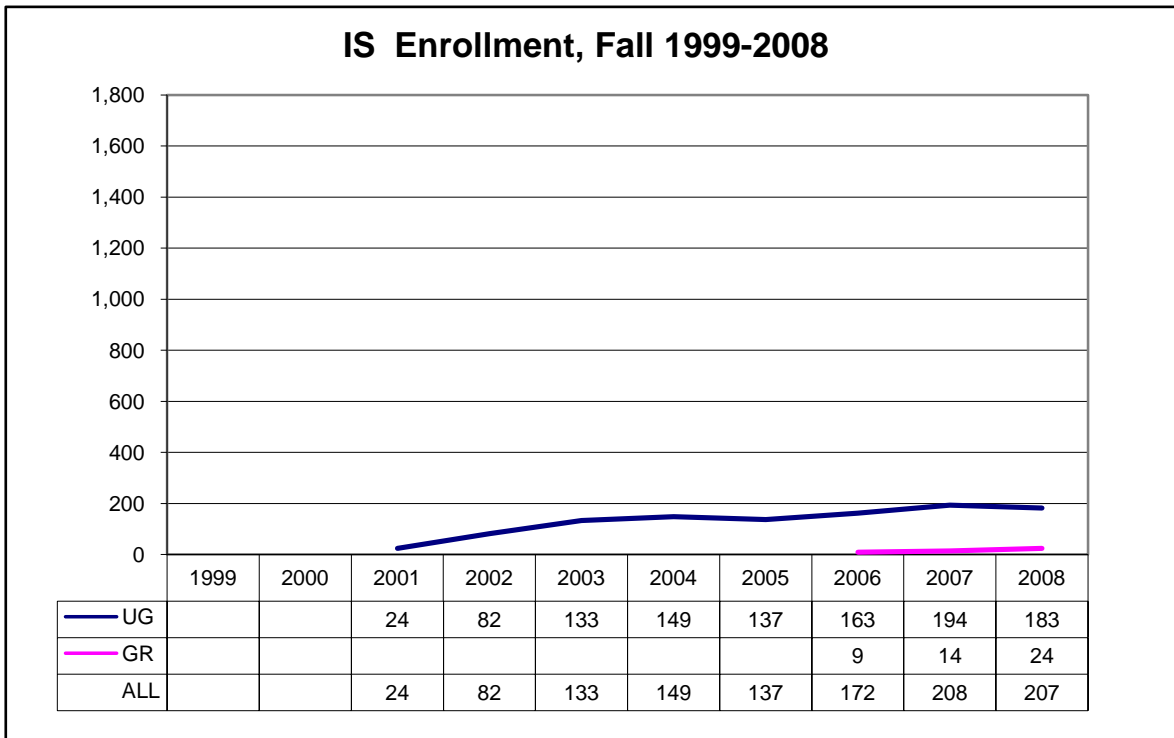
**B.5.**



**B.5.**

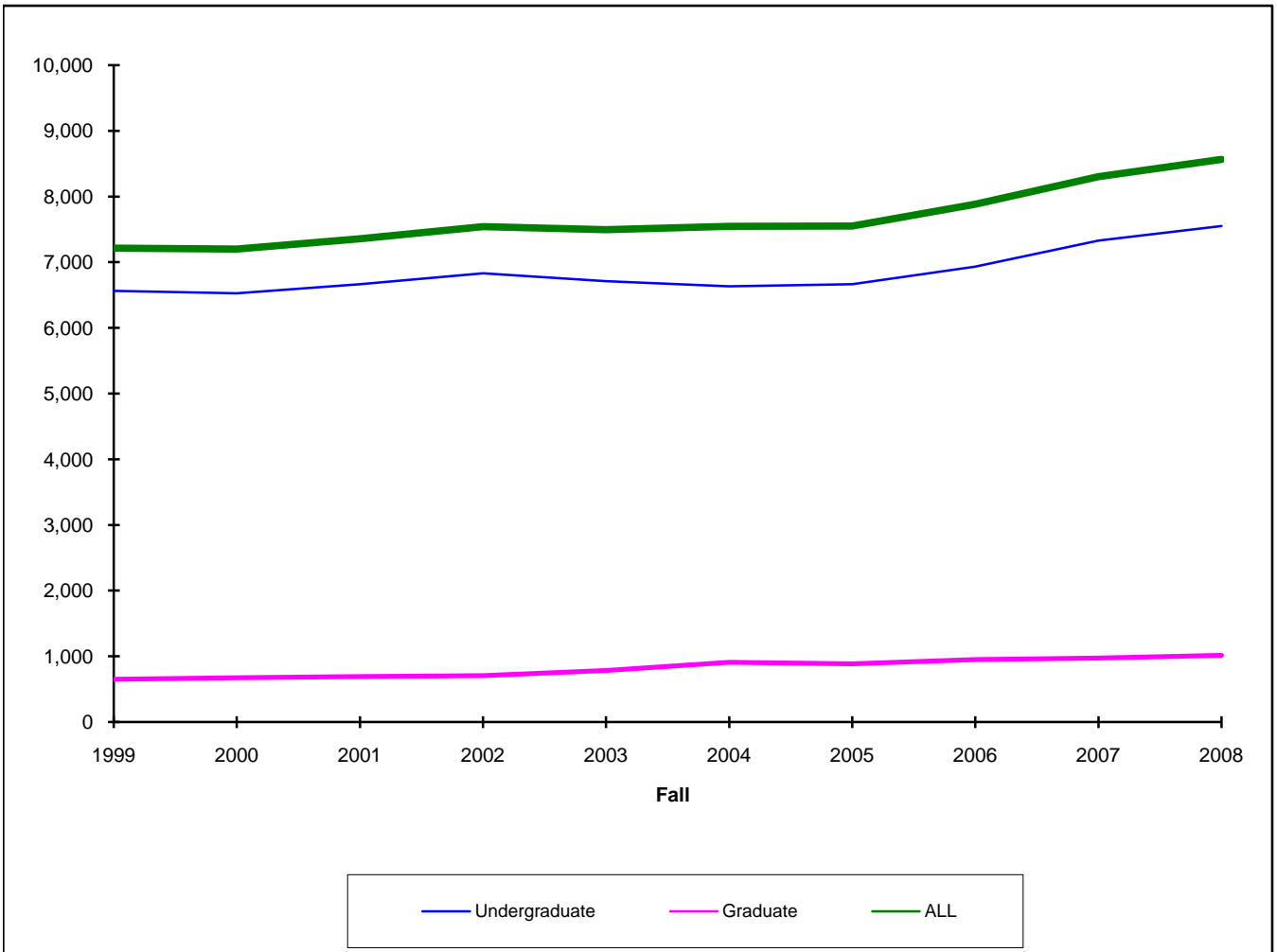


**B.5.**



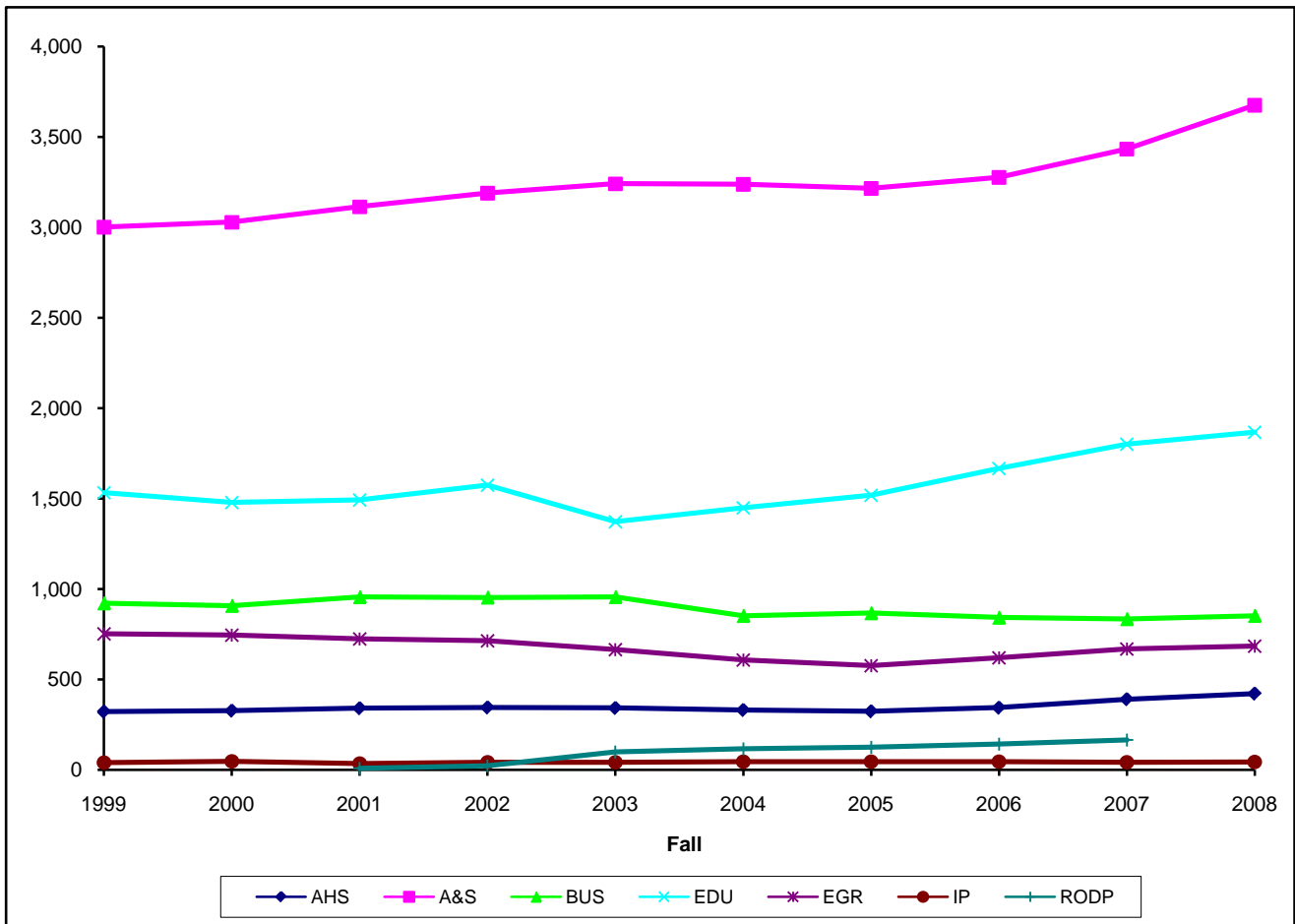
### C.1. FTE Enrollment by Level, Fall 1999-2008

	1999	2000	2001	2002	2003	2004	2005	2006	2007	2008
Undergraduate	6,565	6,530	6,666	6,834	6,713	6,636	6,668	6,933	7,331	7,551
Graduate	651	672	694	708	784	911	886	953	973	1,016
ALL	7,216	7,202	7,360	7,542	7,497	7,547	7,554	7,886	8,304	8,567



### C.2.a. Undergraduate FTE Enrollment by Unit, Fall 1999-2008

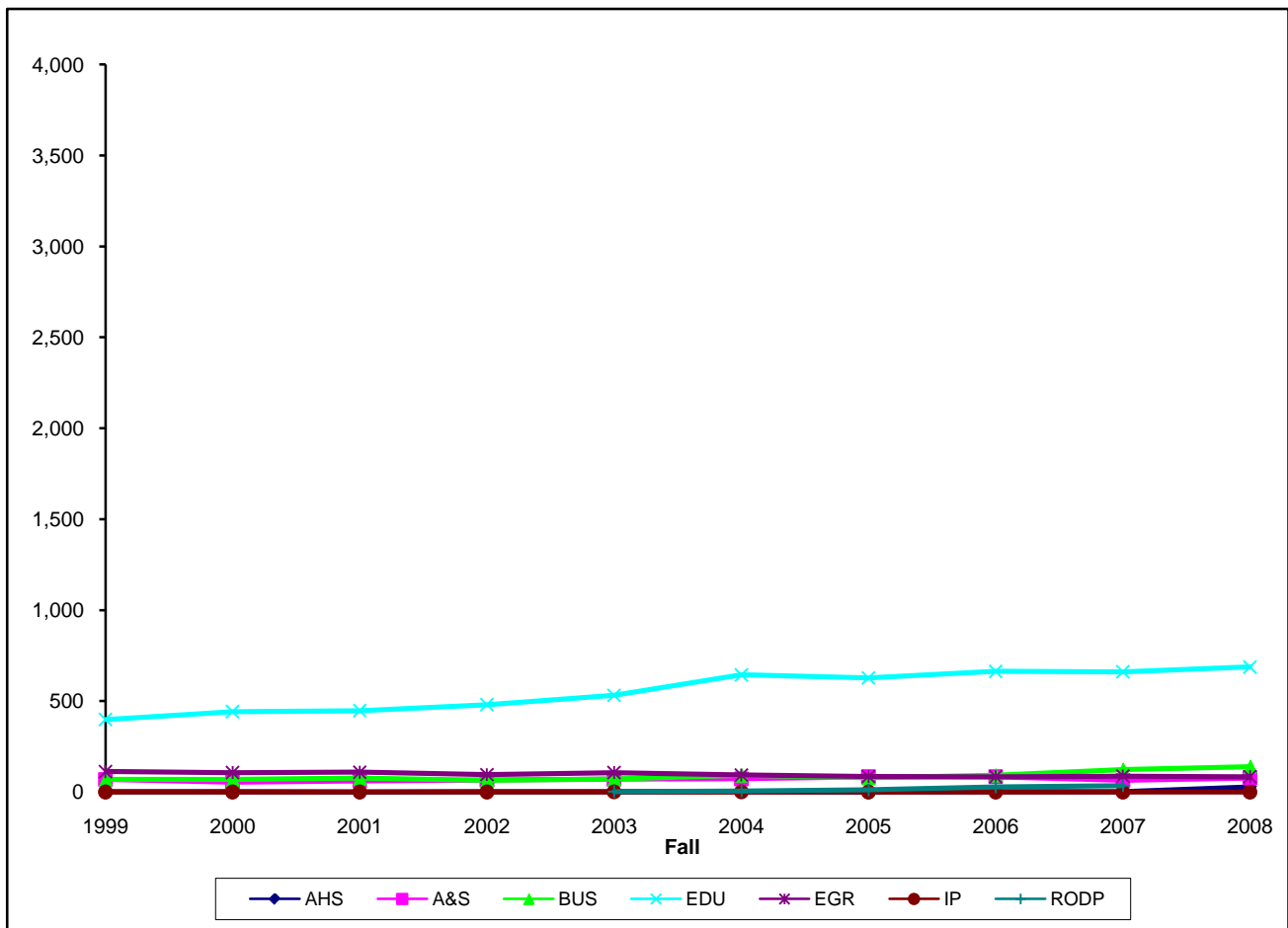
	1999	2000	2001	2002	2003	2004	2005	2006	2007	2008
AHS	321	327	340	344	341	330	323	343	390	421
A&S	3,001	3,028	3,113	3,189	3,241	3,238	3,215	3,276	3,433	3,676
BUS	921	907	956	953	956	852	867	842	834	852
EDU	1,532	1,478	1,492	1,574	1,372	1,449	1,519	1,667	1,801	1,867
EGR	751	744	723	713	664	607	576	619	668	683
IP	39	46	35	41	41	44	45	45	41	43
IS										10
RODP			7	21	97	115	124	142	164	
ALL	6,565	6,530	6,666	6,834	6,713	6,636	6,668	6,934	7,331	7,551



NOTE: For Fall 2008, RODP hours are distributed to the appropriate academic departments.

### C.2.b. Graduate FTE Enrollment by Unit, Fall 1999-2008

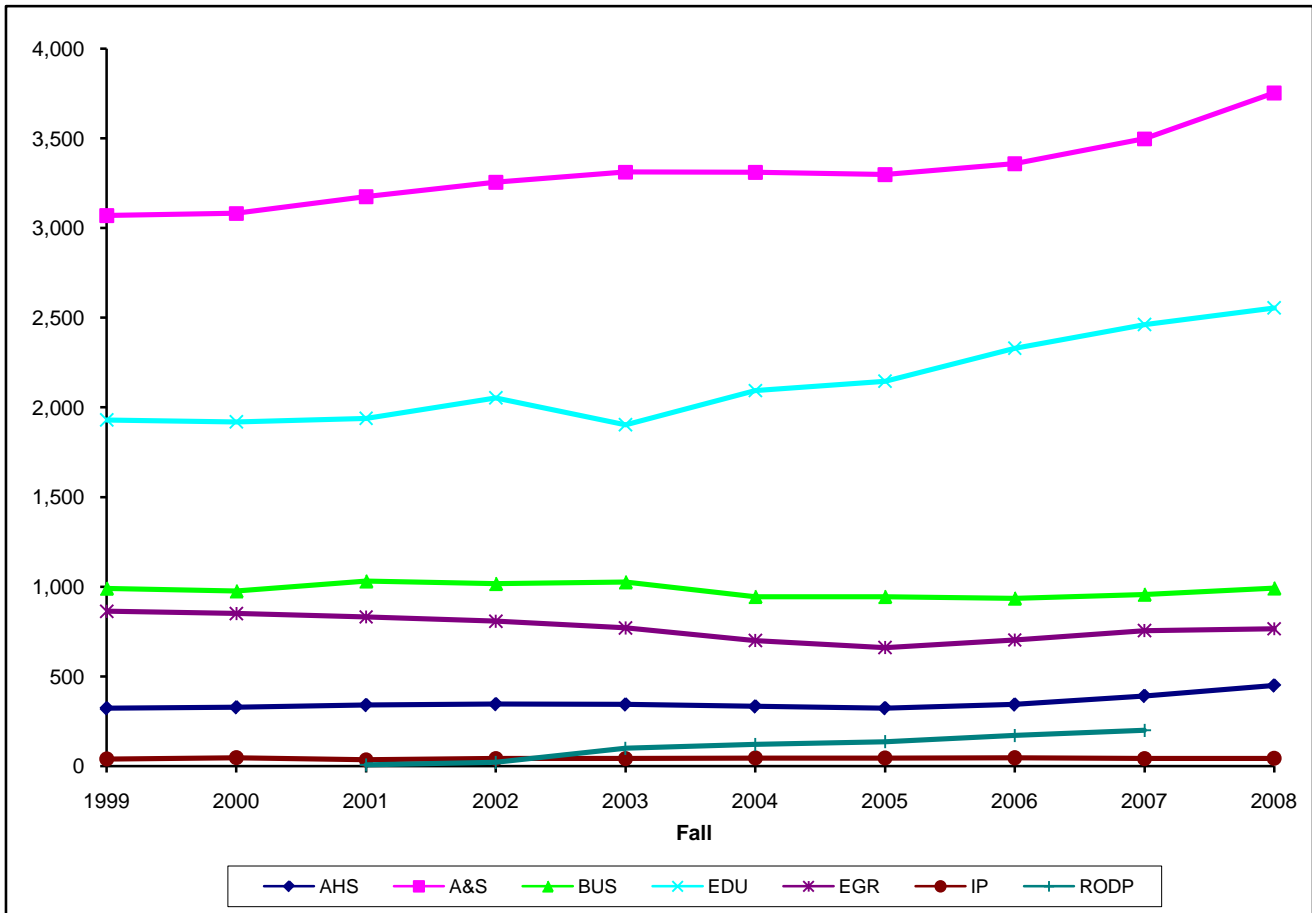
	1999	2000	2001	2002	2003	2004	2005	2006	2007	2008
AHS	1	1	0	1	2	3	0	1	1	28
A&S	69	53	61	66	71	72	83	84	64	77
BUS	70	69	76	64	70	93	78	93	124	140
EDU	398	442	447	480	532	645	628	663	661	688
EGR	113	107	109	96	106	93	85	84	88	84
IP	0	0	0	1	1	1	1	0	0	0
RODP					2	5	12	28	35	
ALL	651	672	694	708	784	911	886	953	973	1,016



NOTE: For Fall 2008, RODP hours are distributed to the appropriate academic departments.

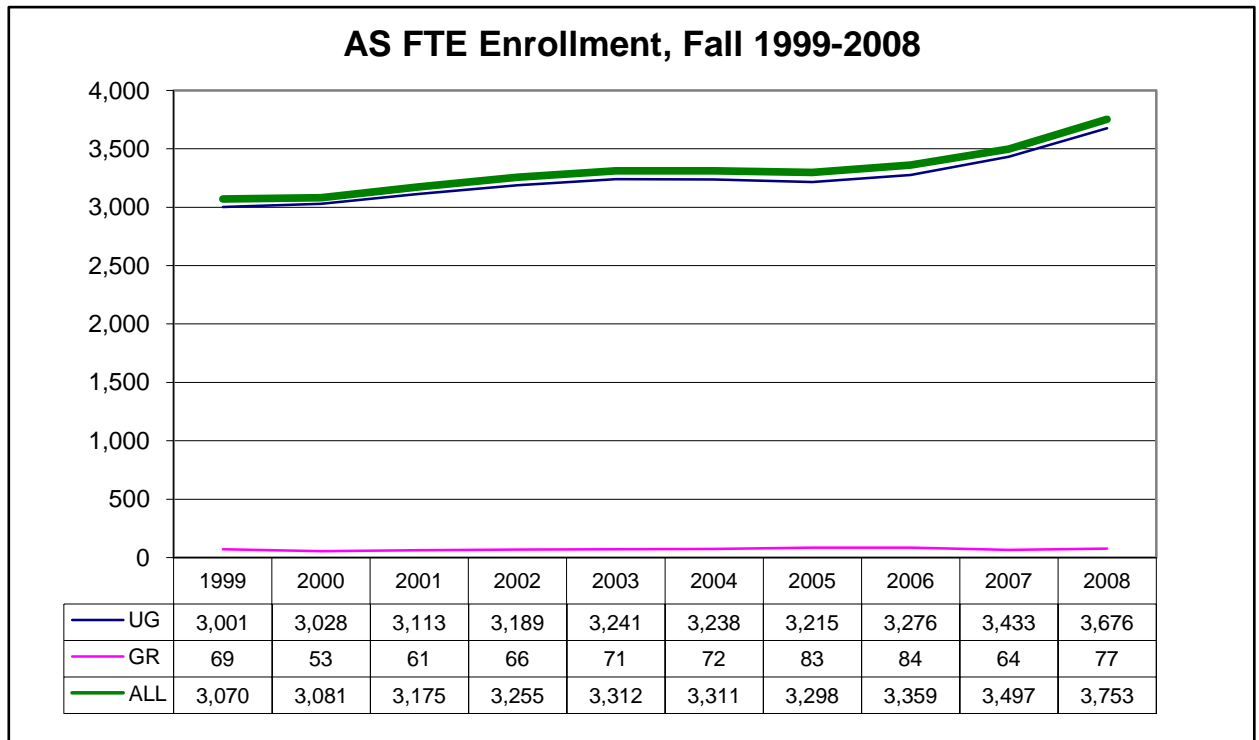
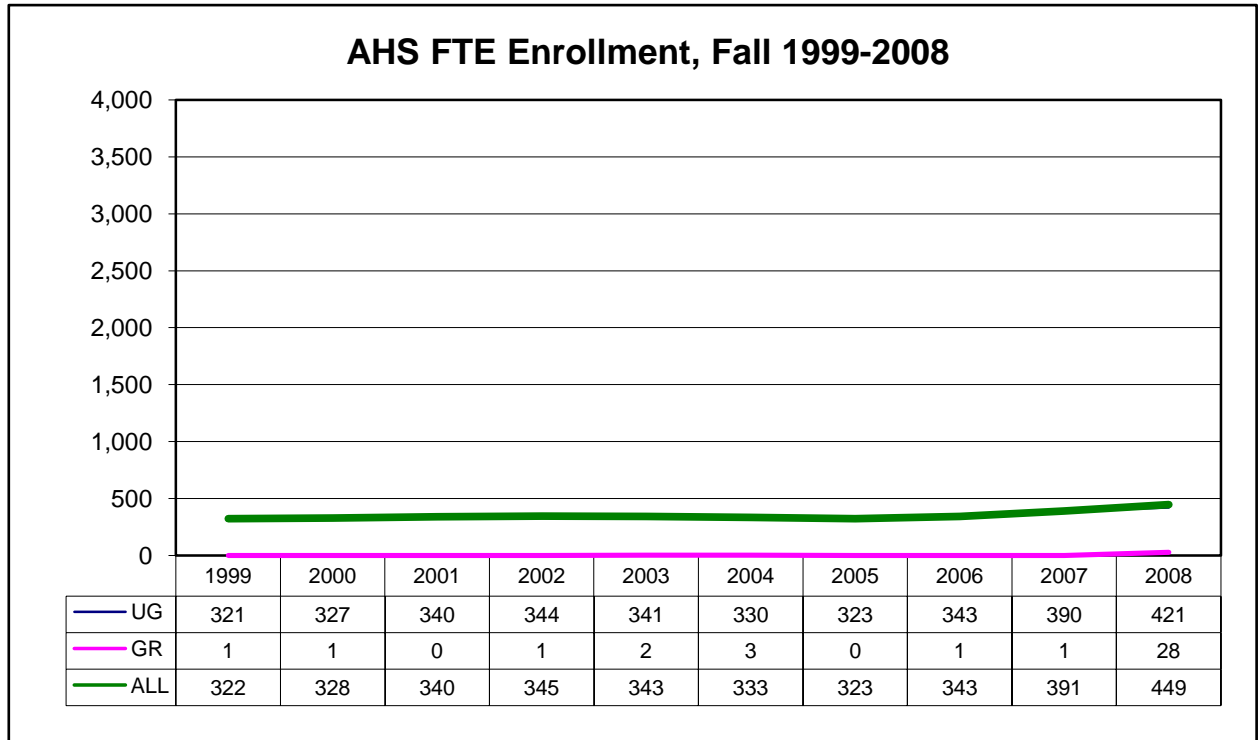
### C.2.c. FTE Enrollment by Unit, Fall 1999-2008

	1999	2000	2001	2002	2003	2004	2005	2006	2007	2008
AHS	322	328	340	345	343	333	323	343	391	449
A&S	3,070	3,081	3,175	3,255	3,312	3,311	3,298	3,359	3,497	3,753
BUS	991	976	1,031	1,017	1,026	944	944	935	957	992
EDU	1,930	1,920	1,940	2,054	1,903	2,094	2,147	2,330	2,462	2,555
EGR	864	851	832	808	771	700	661	703	756	766
IP	40	46	35	42	42	45	45	46	42	43
IS										10
RODP			7	21	99	120	136	170	199	
ALL	7,216	7,202	7,360	7,542	7,497	7,547	7,554	7,886	8,304	8,568



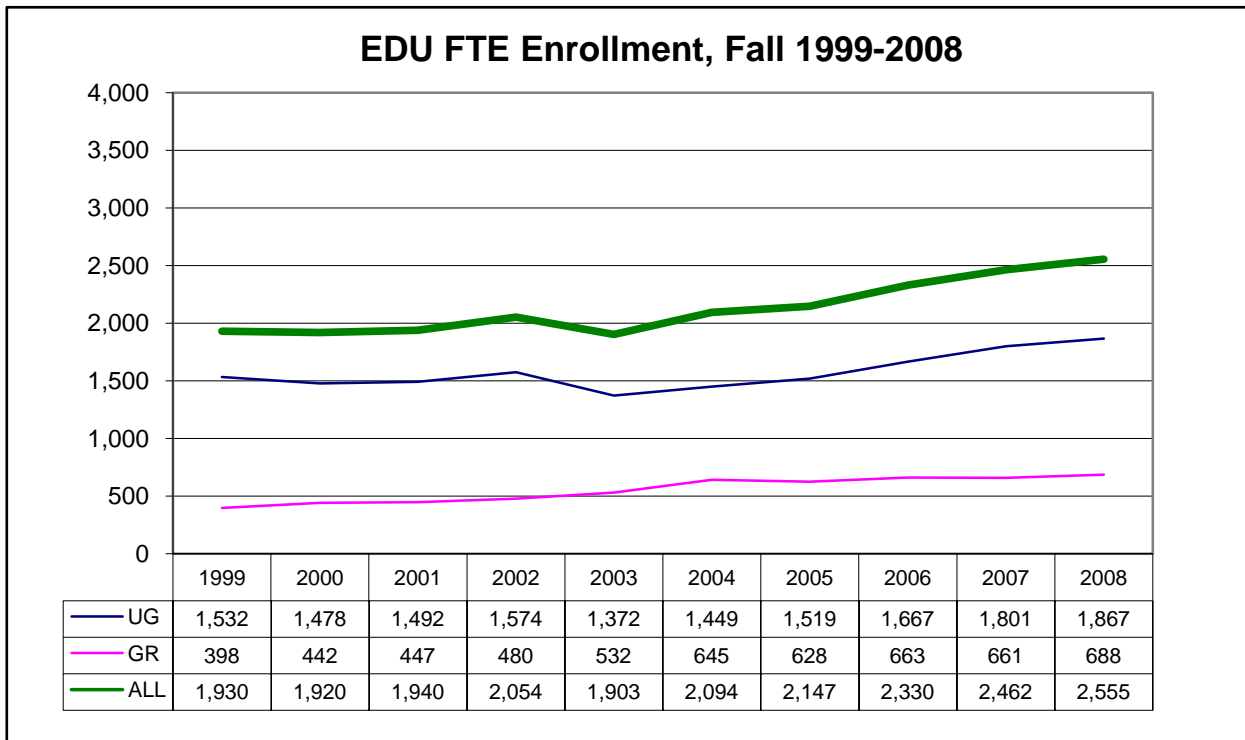
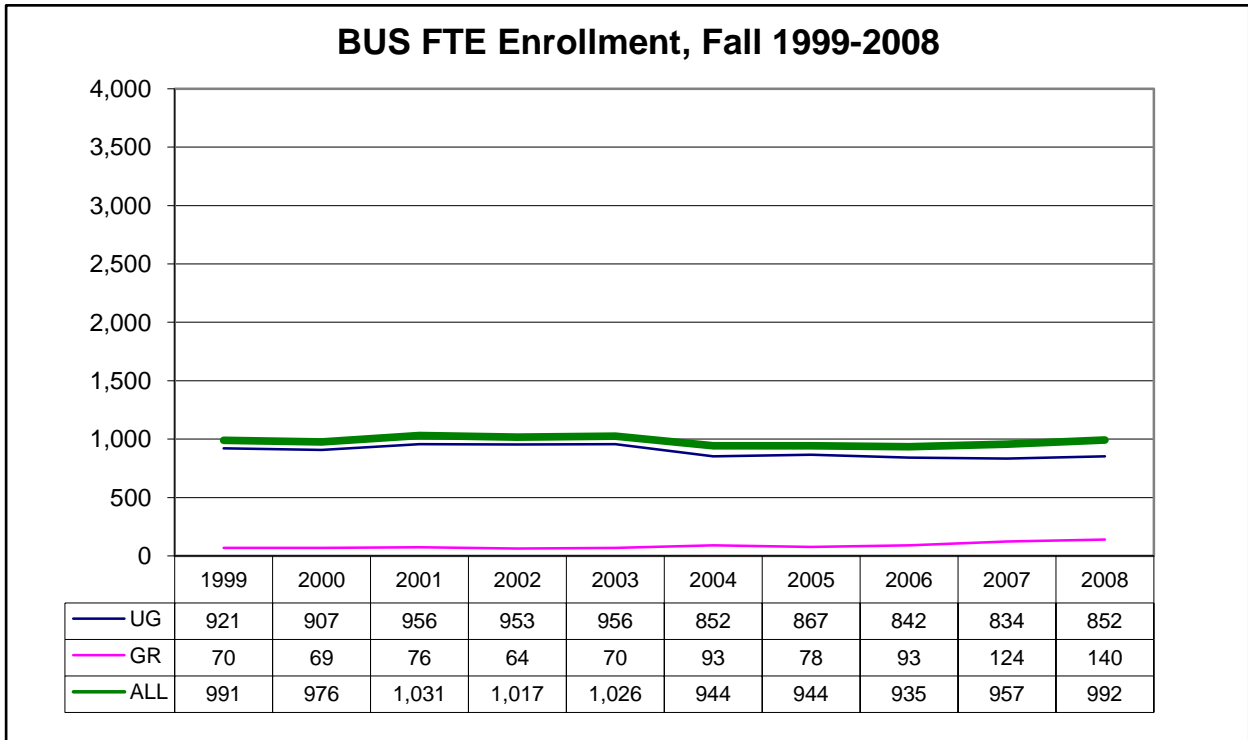
NOTE: For Fall 2008, RODP hours are distributed to the appropriate academic departments.

**C.3.**

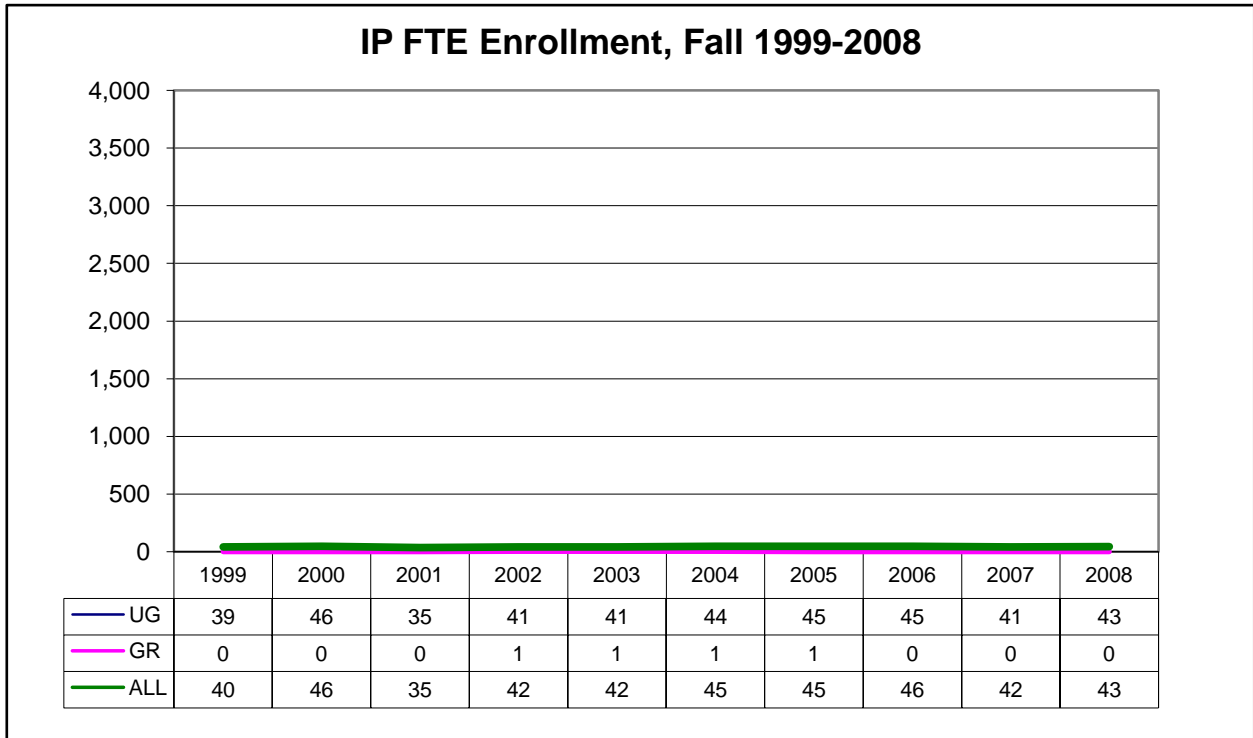
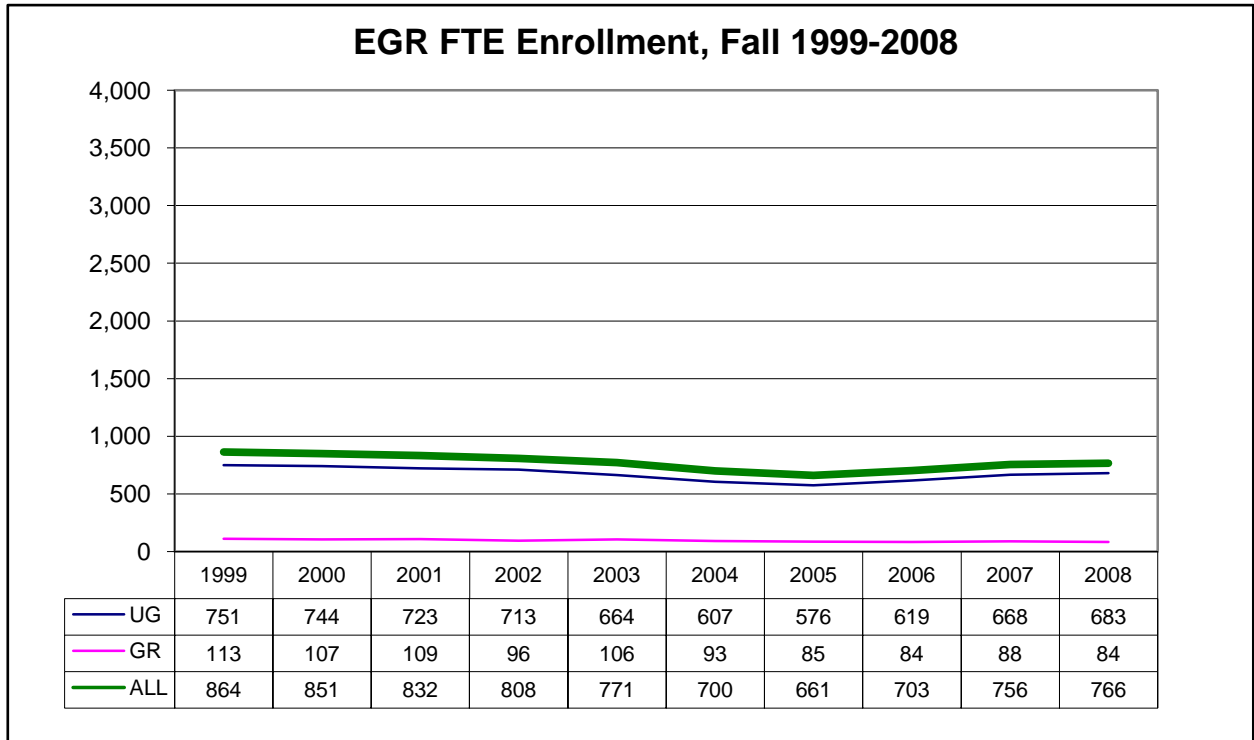


UG = Undergraduate  
 GR = Graduate

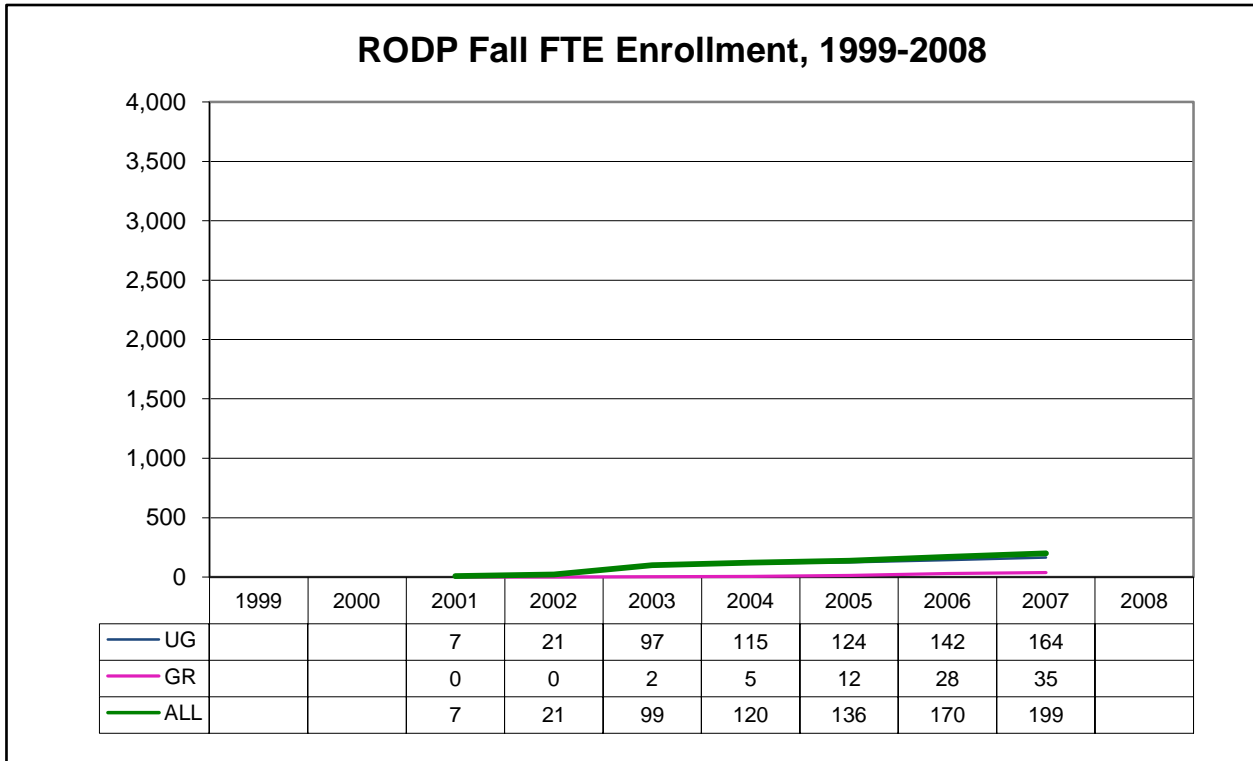
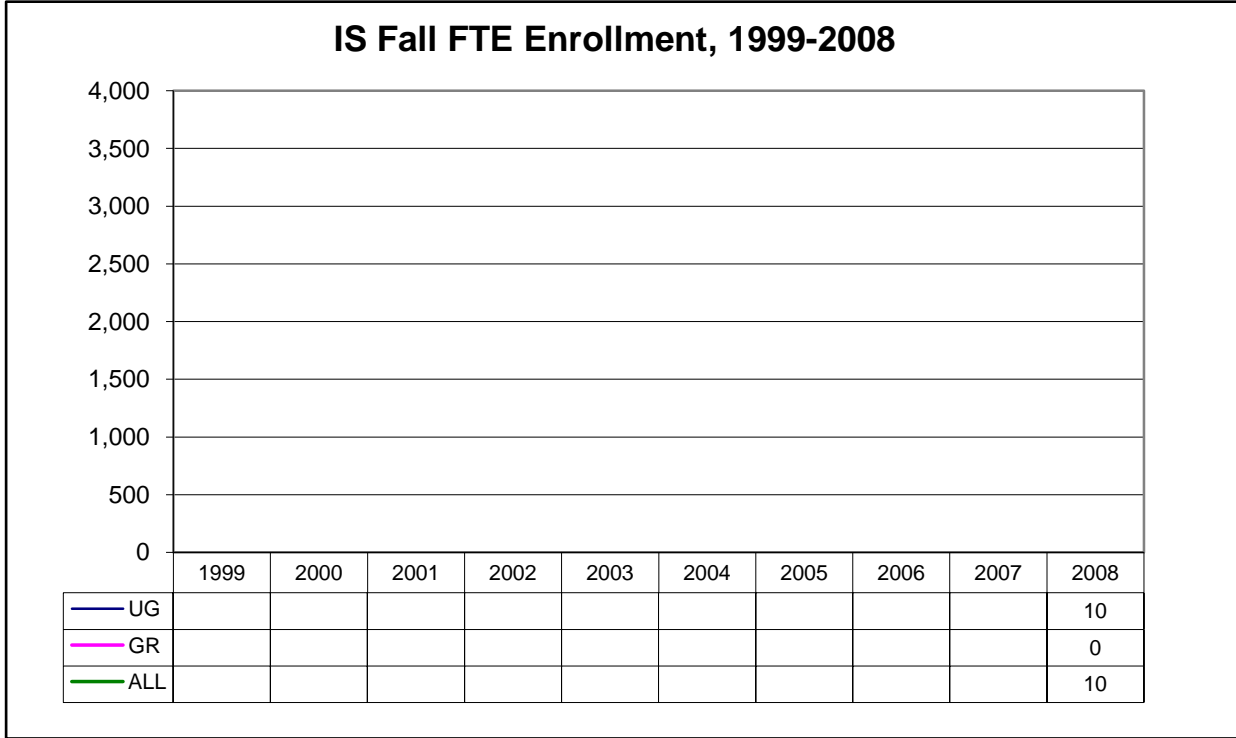
**C.3.**



**C.3.**



**C.3.**

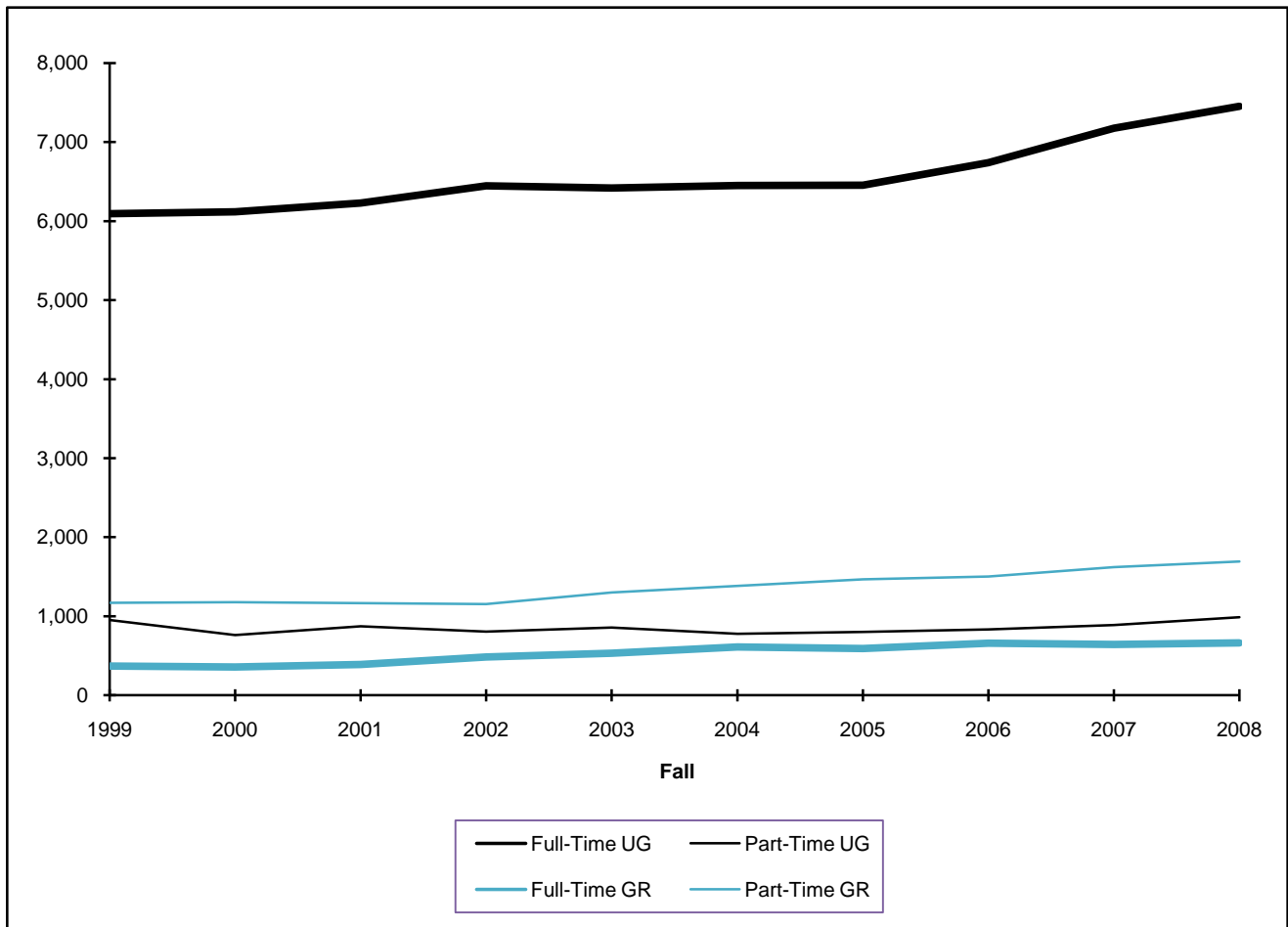


NOTE: For Fall 2008, RODP hours are distributed to the appropriate academic departments.

### D.1. Enrollment by Level and Course Load, Fall 1999-2008

<b>Undergraduate</b>	1999	2000	2001	2002	2003	2004	2005	2006	2007	2008	% Change from 1999 to 2008
Full-Time UG	6,092	6,114	6,226	6,444	6,416	6,448	6,453	6,737	7,171	7,450	22%
Part-Time UG	951	762	873	807	857	776	802	832	889	988	4%
ALL	7,043	6,876	7,099	7,251	7,273	7,224	7,255	7,569	8,060	8,438	20%

<b>Graduate</b>	1999	2000	2001	2002	2003	2004	2005	2006	2007	2008	% Change from 1999 to 2008
Full-Time GR	370	357	389	484	533	610	592	660	641	662	79%
Part-Time GR	1,171	1,177	1,165	1,155	1,301	1,383	1,466	1,504	1,620	1,693	45%
ALL	1,541	1,534	1,554	1,639	1,834	1,993	2,058	2,164	2,261	2,355	53%



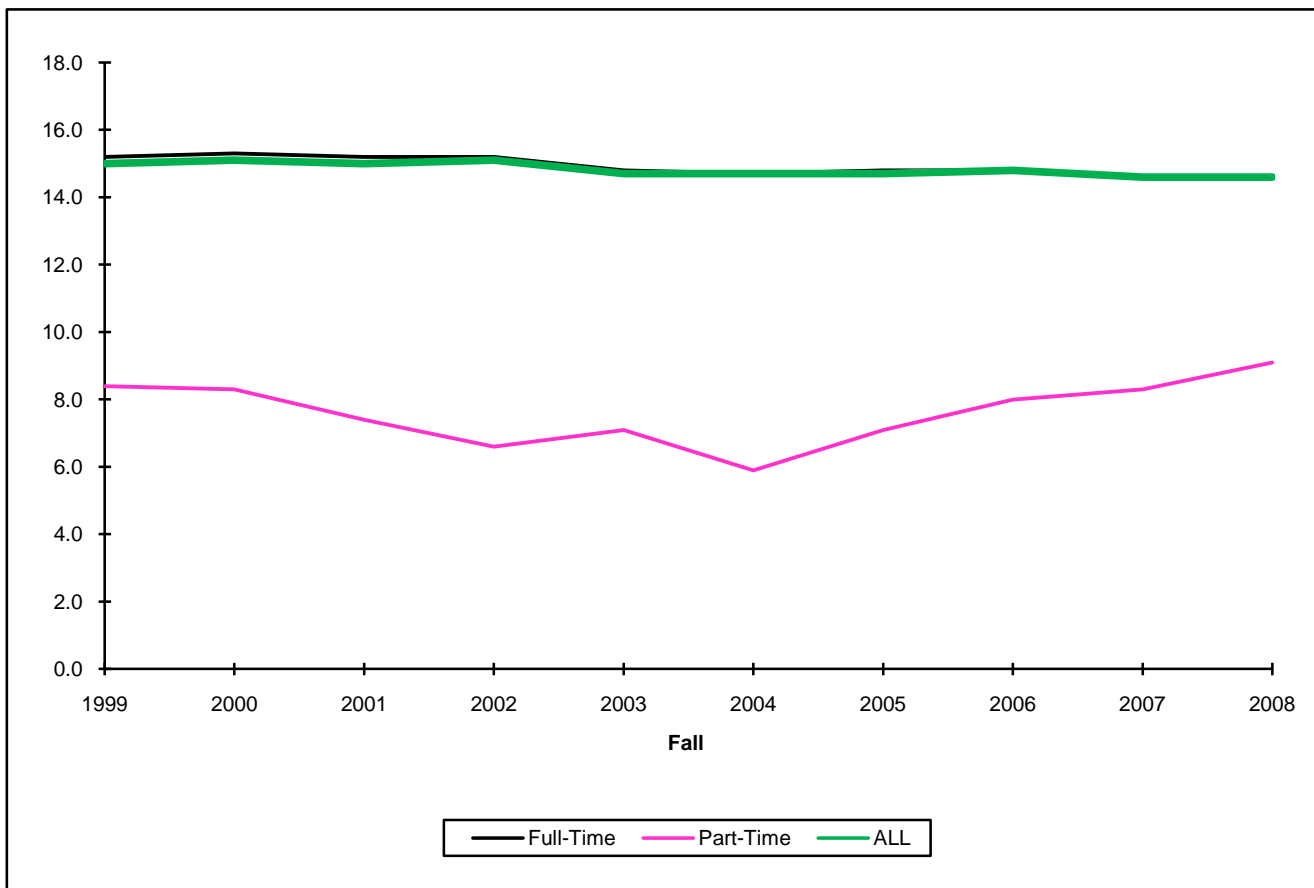
## D.2.a. First-Time Freshman Course Load and Attempted Hours

### Fall 1999-2008

<b>Mean Hours</b>	1999	2000	2001	2002	2003	2004	2005	2006	2007	2008
Full-Time	15.2	15.3	15.2	15.2	14.8	14.7	14.8	14.8	14.6	14.6
Part-Time	8.4	8.3	7.4	6.6	7.1	5.9	7.1	8.0	8.3	9.1
ALL	15.0	15.1	15.0	15.1	14.7	14.7	14.7	14.8	14.6	14.6

<b>Median Hours</b>	1999	2000	2001	2002	2003	2004	2005	2006	2007	2008
Full-Time	15	15	15	15	15	15	15	15	14	15
Part-Time	10	9	7.5	7	6	6	6.5	9	9	10
ALL	15	15	15	15	15	15	15	15	14	15

Mean Hours



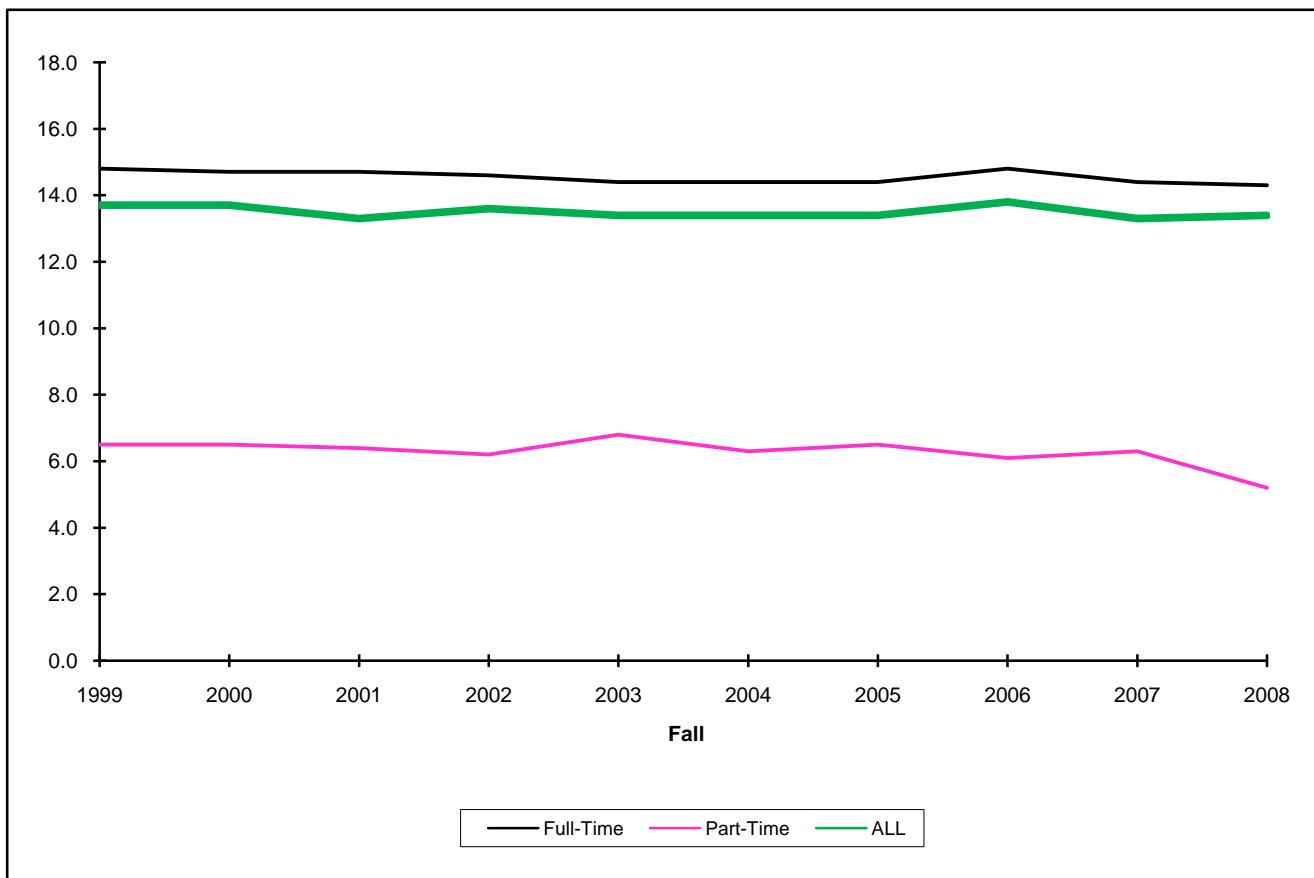
## D.2.b. Transfer Student Course Load and Attempted Hours

### Fall 1999-2008

<b>Mean Hours</b>	1999	2000	2001	2002	2003	2004	2005	2006	2007	2008
Full-Time	14.8	14.7	14.7	14.6	14.4	14.4	14.4	14.8	14.4	14.3
Part-Time	6.5	6.5	6.4	6.2	6.8	6.3	6.5	6.1	6.3	5.2
ALL	13.7	13.7	13.3	13.6	13.4	13.4	13.4	13.8	13.3	13.4

<b>Median Hours</b>	1999	2000	2001	2002	2003	2004	2005	2006	2007	2008
Full-Time	15	15	15	15	15	14	15	15	15	15
Part-Time	6	6	6	6	6	6	6	6	6	6
ALL	15	14	14	14	14	14	14	15	14	15

Mean Hours



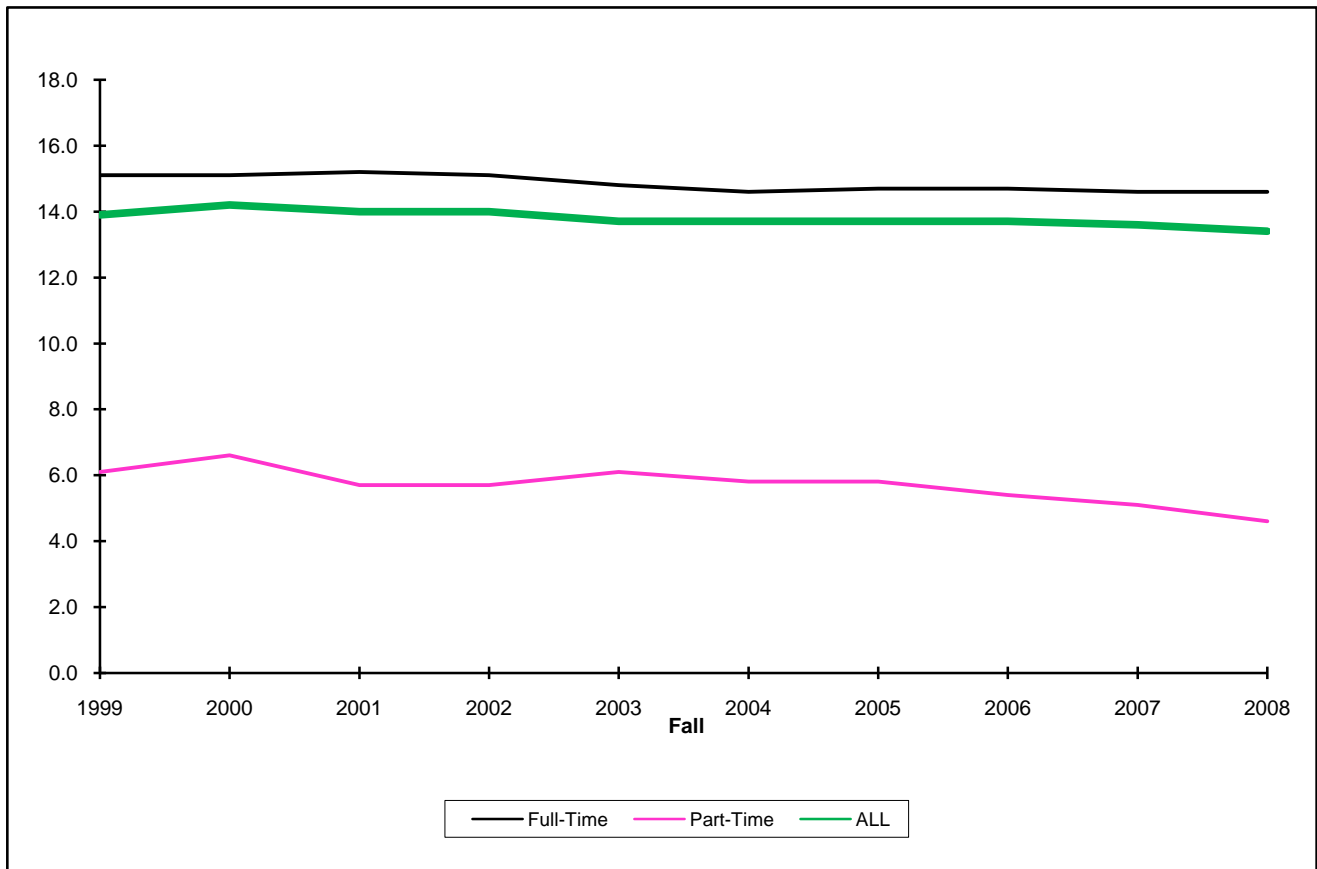
## D.2.c. Undergraduate Student Course Load and Attempted Hours

### Fall 1999-2008

<b>Mean Hours</b>	1999	2000	2001	2002	2003	2004	2005	2006	2007	2008
Full-Time	15.1	15.1	15.2	15.1	14.8	14.6	14.7	14.7	14.6	14.6
Part-Time	6.1	6.6	5.7	5.7	6.1	5.8	5.8	5.4	5.1	4.6
ALL	13.9	14.2	14.0	14.0	13.7	13.7	13.7	13.7	13.6	13.4

<b>Median Hours</b>	1999	2000	2001	2002	2003	2004	2005	2006	2007	2008
Full-Time	15	15	15	15	15	15	15	15	15	15
Part-Time	6	6	6	6	6	6	6	6	6	3
ALL	15	15	15	15	14	14	14	15	14	14

Mean Hours



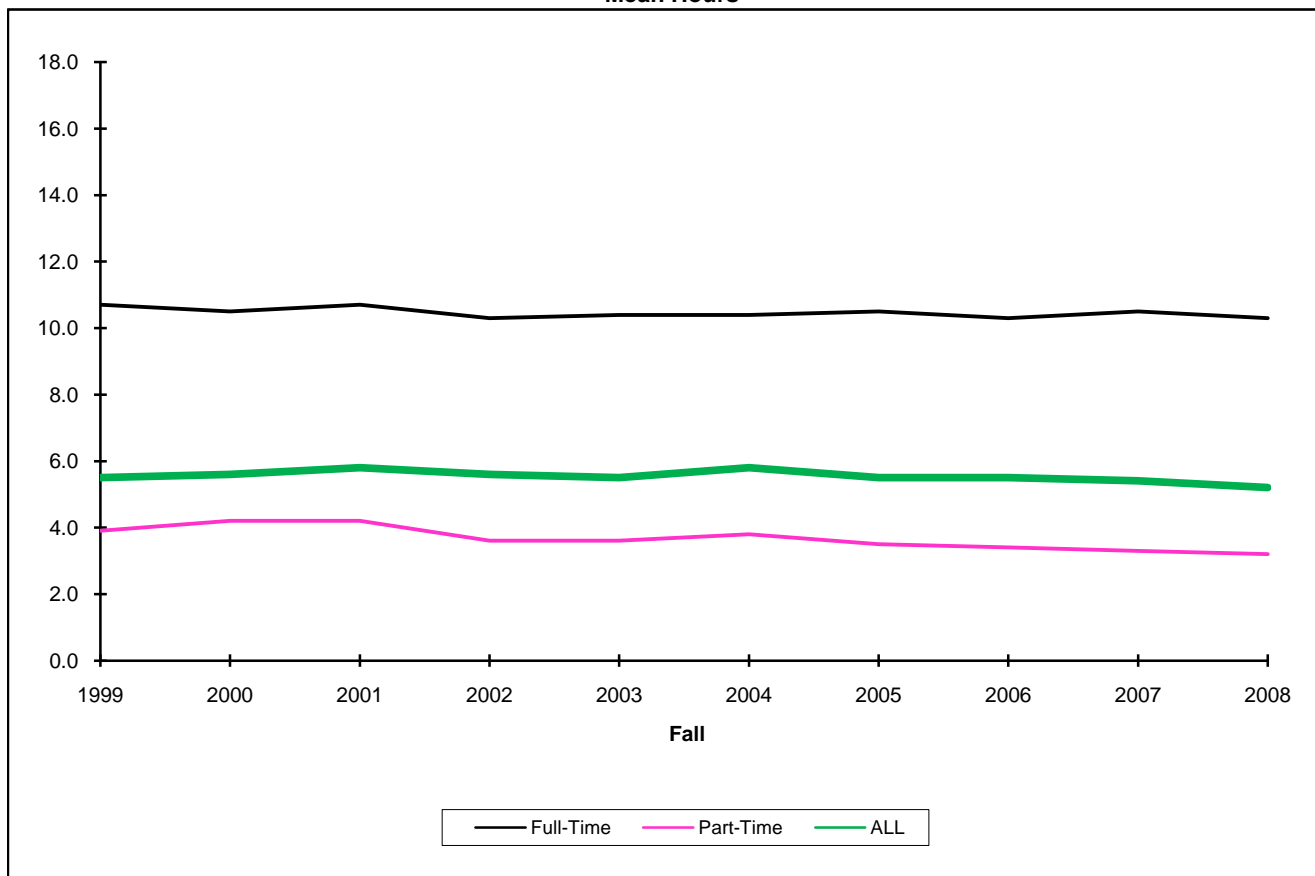
## D.2.d. Graduate Student Course Load and Attempted Hours

### Fall 1999-2008

<b>Mean Hours</b>	1999	2000	2001	2002	2003	2004	2005	2006	2007	2008
Full-Time	10.7	10.5	10.7	10.3	10.4	10.4	10.5	10.3	10.5	10.3
Part-Time	3.9	4.2	4.2	3.6	3.6	3.8	3.5	3.4	3.3	3.2
ALL	5.5	5.6	5.8	5.6	5.5	5.8	5.5	5.5	5.4	5.2

<b>Median Hours</b>	1999	2000	2001	2002	2003	2004	2005	2006	2007	2008
Full-Time	10	10	10	9	9	9	9	9	10	9
Part-Time	3	6	6	3	3	3	3	3	3	3
ALL	6	6	6	6	6	6	6	6	6	6

**Mean Hours**



## E.1.a. Full-Time-Equivalent Enrollment By Instructional Site Type

Fall 2000 - Fall 2008

2000	2001	2002	2003	2004	2005	2006	2007	2008	Fall
<b>6,530.3</b>	<b>6,665.9</b>	<b>6,834.0</b>	<b>6,712.7</b>	<b>6,636.0</b>	<b>6,668.0</b>	<b>6,933.4</b>	<b>7,331.1</b>	<b>7576.7</b>	<b>Undergraduate</b>
6,470.1	6,544.4	6,688.9	6,494.3	6,291.3	6,246.5	6,431.1	6,708.5	6933.4	<b>A. Main Campus Without Distance Education</b>
60.2	70.2	77.5	126.7	197.7	271.3	334.8	396.5	422.1	<b>B. Off-Campus Without Distance Education</b>
0.0	0.0	0.0	69.3	147.2	214.0	278.4	335.3	325.8	2+2 Program
60.2	70.2	77.5	57.3	50.5	57.3	56.4	61.3	96.3	Other Off-Campus Instruction
0.0	51.3	67.6	91.7	147.0	150.1	167.5	226.0	220.9	<b>C. Distance Education</b>
0.0	16.5	54.4	87.7	115.2	124.3	142.1	163.7	173.9	Regents Online Degree Program
0.0	34.8	13.2	4.0	31.8	25.9	25.5	62.3	47.0	Other Online Instruction
<b>671.8</b>	<b>694.3</b>	<b>707.9</b>	<b>784.0</b>	<b>910.9</b>	<b>886.0</b>	<b>952.4</b>	<b>973.0</b>	<b>984.8</b>	<b>Graduate</b>
444.6	423.6	417.4	430.8	473.4	423.1	444.8	425.8	433.2	<b>A. Main Campus Without Distance Education</b>
227.3	270.3	281.6	312.8	374.8	375.3	187.5	216.3	216.6	<b>B. Off-Campus Without Distance Education</b>
227.3	270.3	281.6	312.8	374.8	375.3	187.5	216.3	216.6	Other Off-Campus Instruction
0.0	0.4	8.9	40.4	62.7	87.7	320.1	330.9	334.9	<b>C. Distance Education</b>
0.0	0.0	0.8	1.8	6.1	11.6	27.6	35.3	47.2	Regents Online Degree Program
0.0	0.0	6.9	30.4	37.5	57.3	70.8	80.5	93.7	Distance MBA
0.0	0.0	0.0	8.3	13.0	15.3	24.8	23.8	31.5	Distance EXPW
0.0	0.4	1.3	0.0	6.1	3.6	197.0	191.3	162.5	Other Online Instruction
<b>7,202.1</b>	<b>7,360.3</b>	<b>7,541.9</b>	<b>7,496.7</b>	<b>7,546.9</b>	<b>7,554.0</b>	<b>7,885.8</b>	<b>8,304.1</b>	<b>8561.3</b>	<b>All</b>
6,914.7	6,968.0	7,106.3	6,925.1	6,764.8	6,669.6	6,875.9	7,134.3	7366.6	<b>A. Main Campus Without Distance Education</b>
287.5	340.5	359.1	439.5	572.5	646.6	522.3	612.9	638.7	<b>B. Off-Campus Without Distance Education</b>
0.0	0.0	0.0	69.3	147.2	214.0	278.4	335.3	325.8	2+2 Program
287.5	340.5	359.1	370.2	425.3	432.6	243.9	277.6	312.9	Other Off-Campus Instruction
0.0	51.8	76.5	132.2	209.7	237.8	487.6	556.9	555.8	<b>C. Distance Education</b>
0.0	16.5	55.2	89.5	121.3	135.9	169.7	199.1	221.1	Regents Online Degree Program
0.0	0.0	6.9	30.4	37.5	57.3	70.8	80.5	93.7	Distance MBA
0.0	0.0	0.0	8.3	13.0	15.3	24.8	23.8	31.5	Distance EXPW
0.0	35.2	14.5	4.0	37.9	29.5	222.5	253.6	209.5	Other Online Instruction

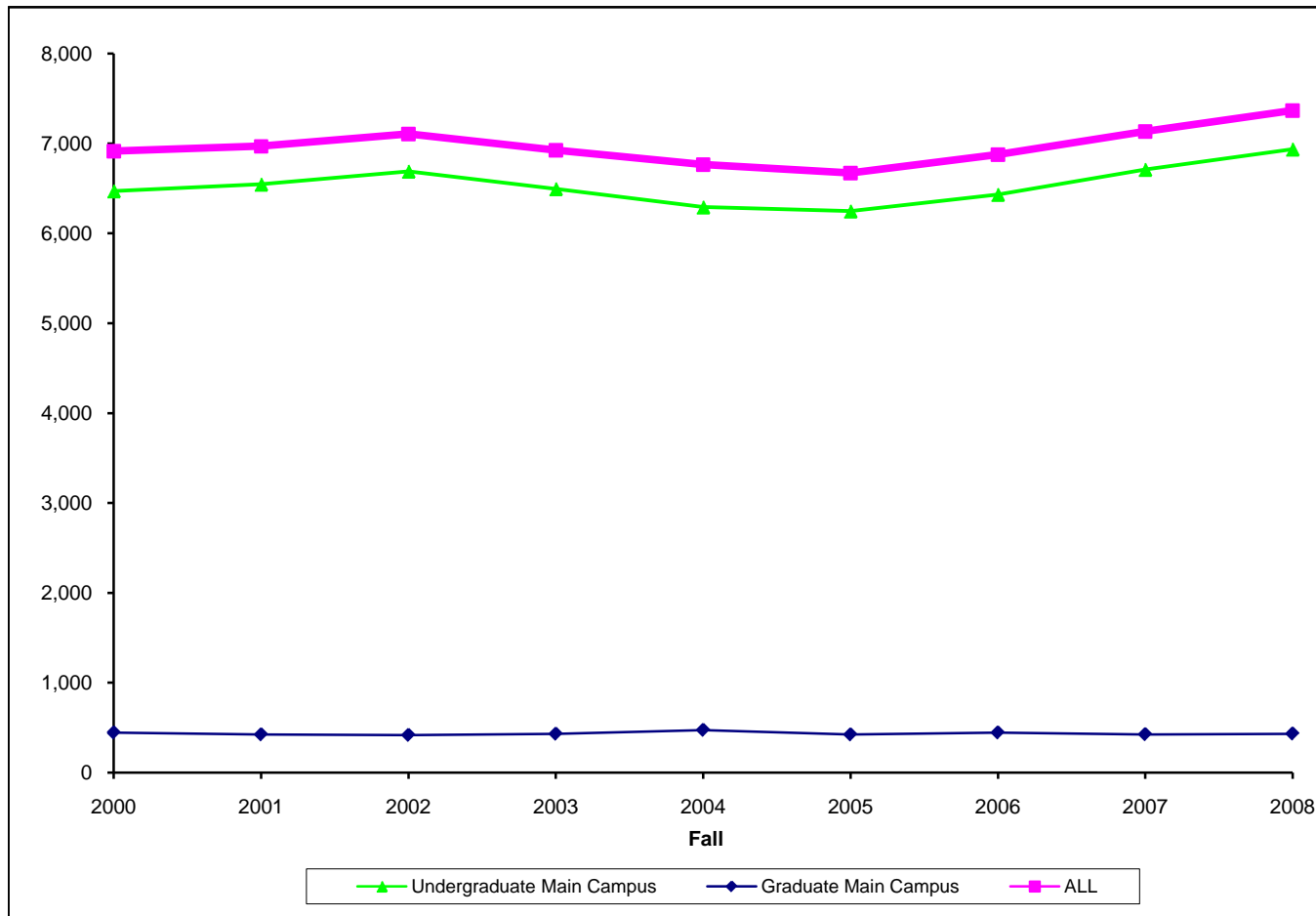
## E.1.b. Student Credit Hours By Instructional Site Type

Fall 2000 - Fall 2008

2000	2001	2002	2003	2004	2005	2006	2007	2008	Fall
<b>97,954</b>	<b>99,989</b>	<b>102,510</b>	<b>100,691</b>	<b>99,540</b>	<b>100,020</b>	<b>104,001</b>	<b>109,966</b>	<b>113,650</b>	<b>Undergraduate</b>
97,051	98,166	100,333	97,415	94,370	93,698	96,466	100,628	104,001	<b>A. Main Campus Without Distance Education</b>
903	1,053	1,163	1,900	2,965	4,070	5,022	5,948	6,332	<b>B. Off Campus Without Distance Education</b>
0	0	0	1,040	2,208	3,210	4,176	5,029	4,887	2+2 Program
903	1,053	1,163	860	757	860	846	919	1,445	Other Off-Campus Instruction
0	770	1,014	1,376	2,205	2,252	2,513	3,390	3,314	<b>C. Distance Education</b>
0	248	816	1,316	1,728	1,864	2,131	2,456	2,608	Regents Online Degree Program
0	522	198	60	477	388	382	934	706	Other Online Instruction
<b>8,062</b>	<b>8,332</b>	<b>8,495</b>	<b>9,408</b>	<b>10,931</b>	<b>10,632</b>	<b>11,429</b>	<b>11,676</b>	<b>11,817</b>	<b>Graduate</b>
5,335	5,083	5,009	5,169	5,681	5,077	5,338	5,109	5,199	<b>A. Main Campus Without Distance Education</b>
2,727	3,244	3,379	3,754	4,498	4,503	2,250	2,596	2,599	<b>B. Off Campus Without Distance Education</b>
2,727	3,244	3,379	3,754	4,498	4,503	2,250	2,596	2,599	Other Off-Campus Instruction
0	5	107	485	752	1,052	3,841	3,971	4,019	<b>C. Distance Education</b>
0	0	9	21	73	139	331	424	566	Regents Online Degree Program
0	0	83	365	450	687	849	966	1,125	Distance MBA
0	0	0	99	156	183	297	285	378	Distance EXPW
0	5	15	0	73	43	2,364	2,296	1,950	Other Online Instruction
<b>106,016</b>	<b>108,321</b>	<b>111,005</b>	<b>110,099</b>	<b>110,471</b>	<b>110,652</b>	<b>115,430</b>	<b>121,642</b>	<b>125,464</b>	<b>All</b>
102,386	103,249	105,342	102,584	100,051	98,775	101,804	105,737	109,200	<b>A. Main Campus Without Distance</b>
3,630	4,297	4,542	5,654	7,463	8,573	7,272	8,544	8,931	<b>B. Off Campus Without Distance</b>
0	0	0	1,040	2,208	3,210	4,176	5,029	4,887	2+2 Program
903	1,053	1,163	860	757	860	3,096	3,515	4,044	Other Off-Campus Instruction
0	775	1,121	1,861	2,957	3,304	6,354	7,361	7,333	<b>C. Distance Education</b>
0	248	825	1,337	1,801	2,003	2,462	2,880	3,174	Regents Online Degree Program
0	0	83	365	450	687	849	966	1,125	Distance MBA
0	0	0	99	156	183	297	285	378	Distance EXPW
0	527	213	60	550	431	2,746	3,230	2,656	Other Online Instruction

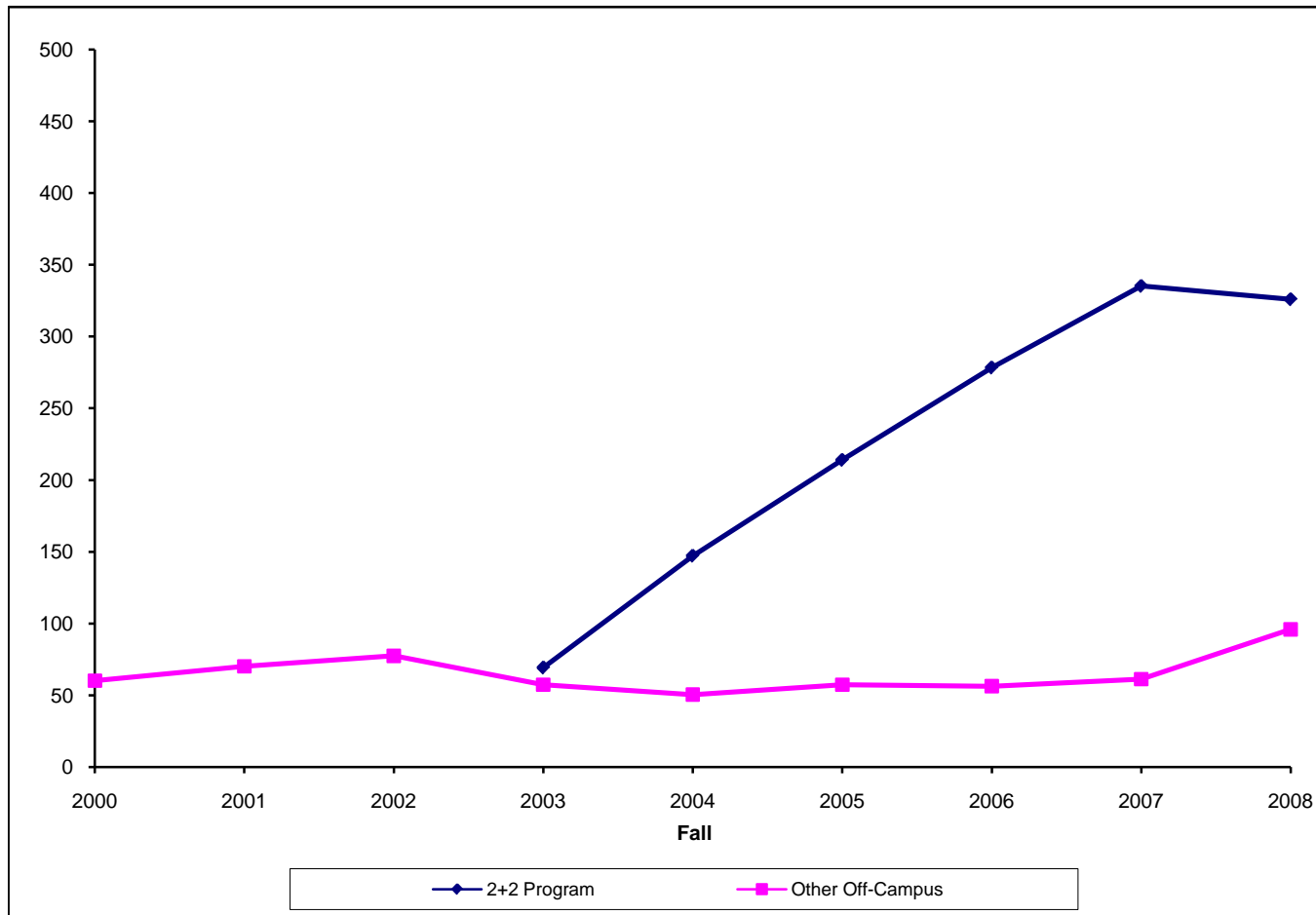
## E.2. Main Campus Without Distance Education Full-Time-Equivalent Enrollment Fall 2000-2008

	2000	2001	2002	2003	2004	2005	2006	2007	2008
Undergraduate Main Campus	6,470	6,544	6,689	6,494	6,291	6,247	6,431	6,709	6,934
Graduate Main Campus	445	424	417	431	473	423	445	426	433
ALL	6,915	6,968	7,106	6,925	6,765	6,670	6,876	7,134	7,367



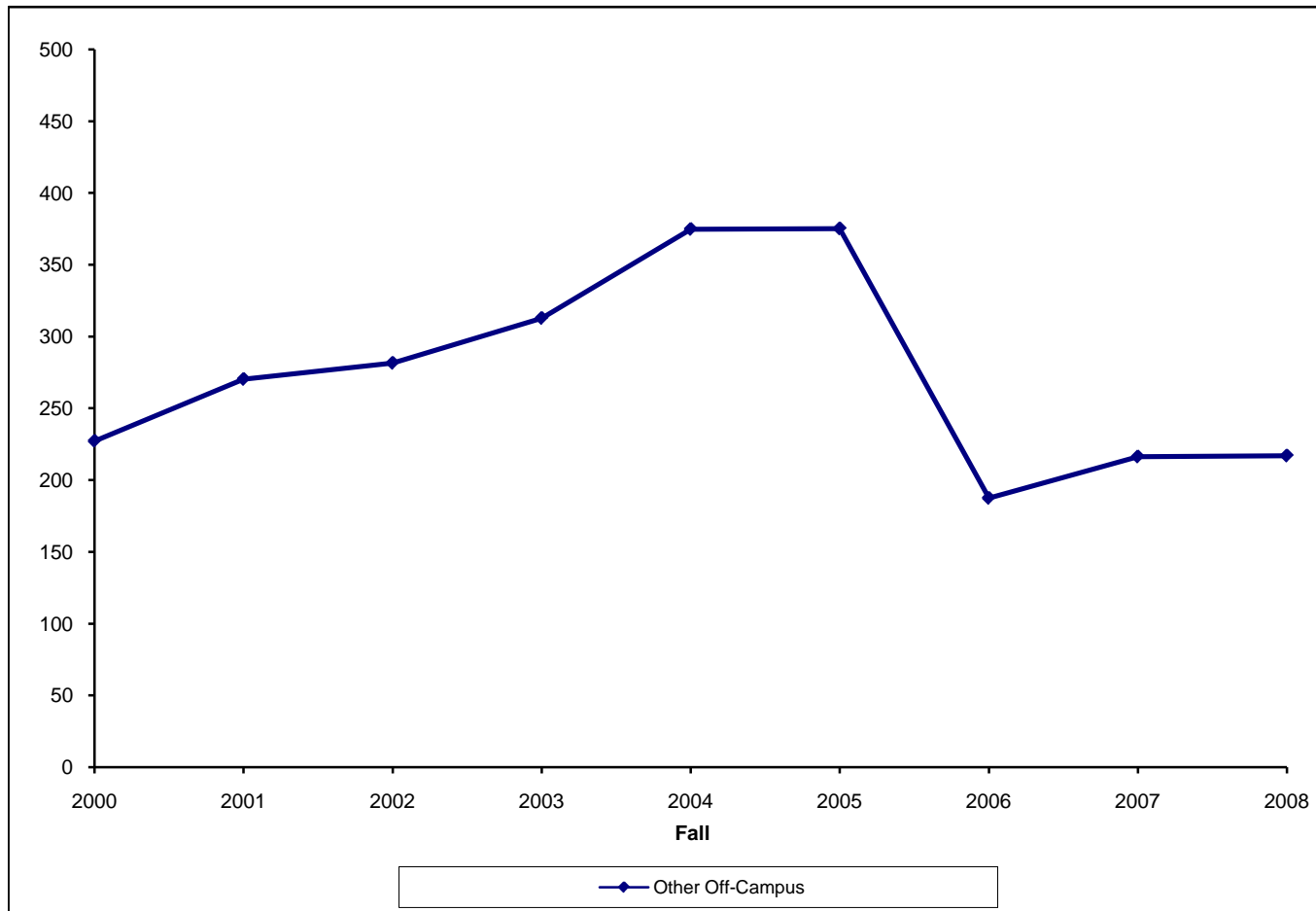
### E.3.a. Undergraduate Off-Campus Without Distance Education Full-Time-Equivalent Enrollment Fall 2000-2008

	2000	2001	2002	2003	2004	2005	2006	2007	2008
2+2 Program				69	147	214	278	335	326
Other Off-Campus	60	70	78	57	50	57	56	61	96
ALL	60	70	78	127	198	271	335	397	422



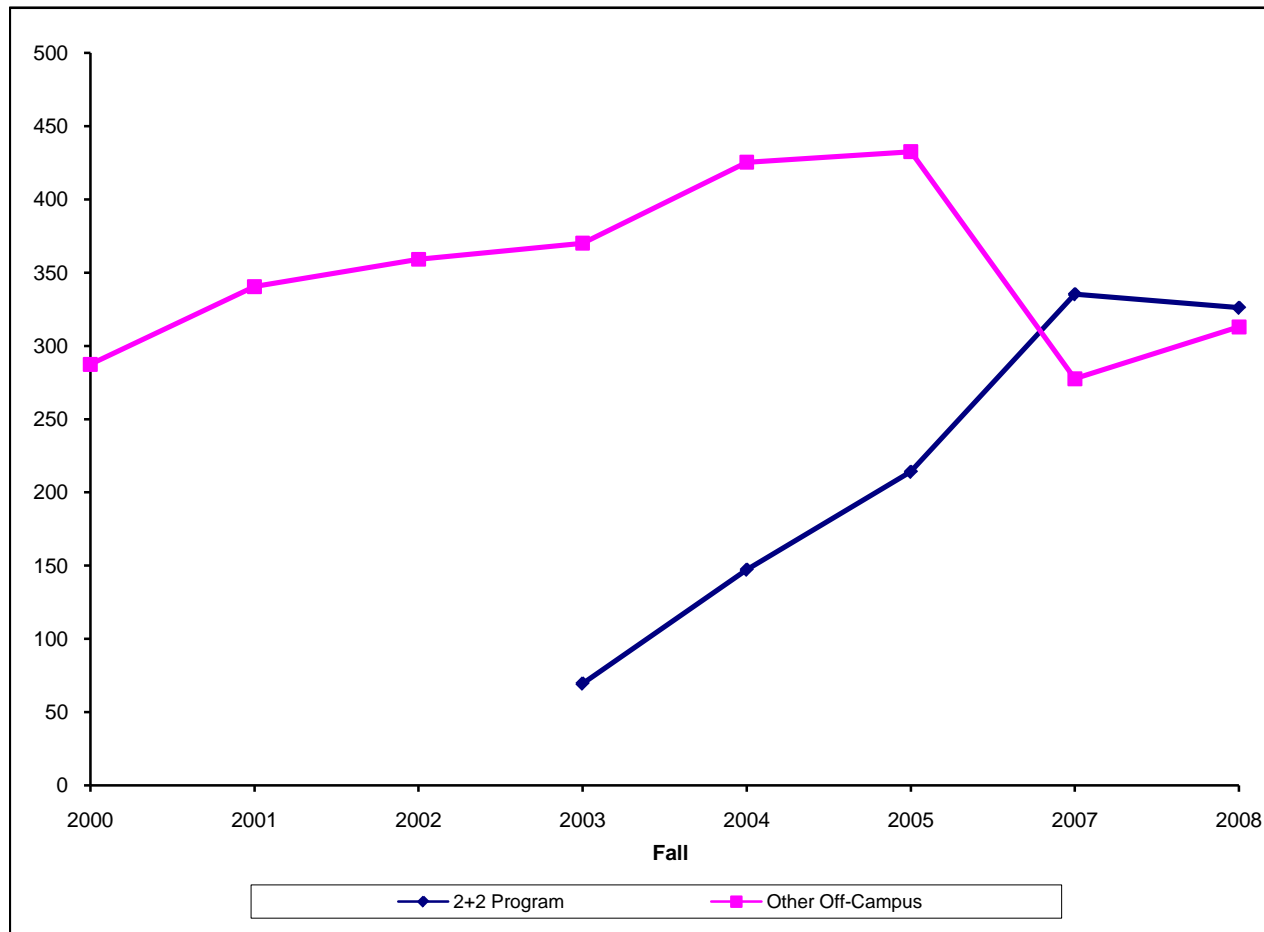
**E.3.b. Graduate Off-Campus Without Distance Education  
Full-Time-Equivalent Enrollment  
Fall 2000-2008**

	2000	2001	2002	2003	2004	2005	2006	2007	2008
Other Off-Campus	227	270	282	313	375	375	188	216	217
ALL	227	270	282	313	375	375	188	216	217



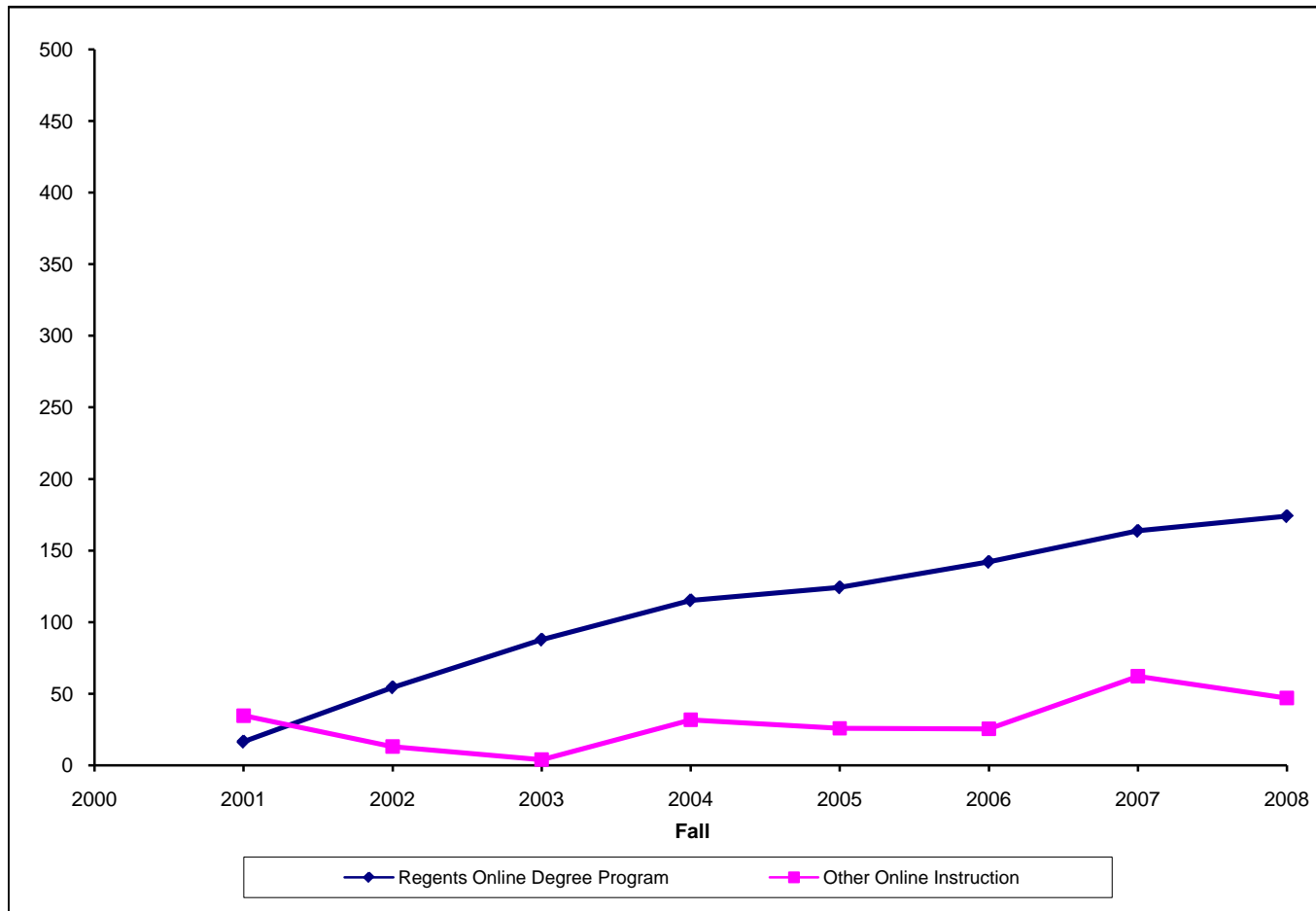
### E.3.c. Off-Campus Without Distance Education Full-Time-Equivalent Enrollment Fall 2000-2008

	2000	2001	2002	2003	2004	2005	2007	2008
2+2 Program				69	147	214	335	326
Other Off-Campus	287	341	359	370	425	433	278	313
ALL	287	341	359	440	573	647	613	639



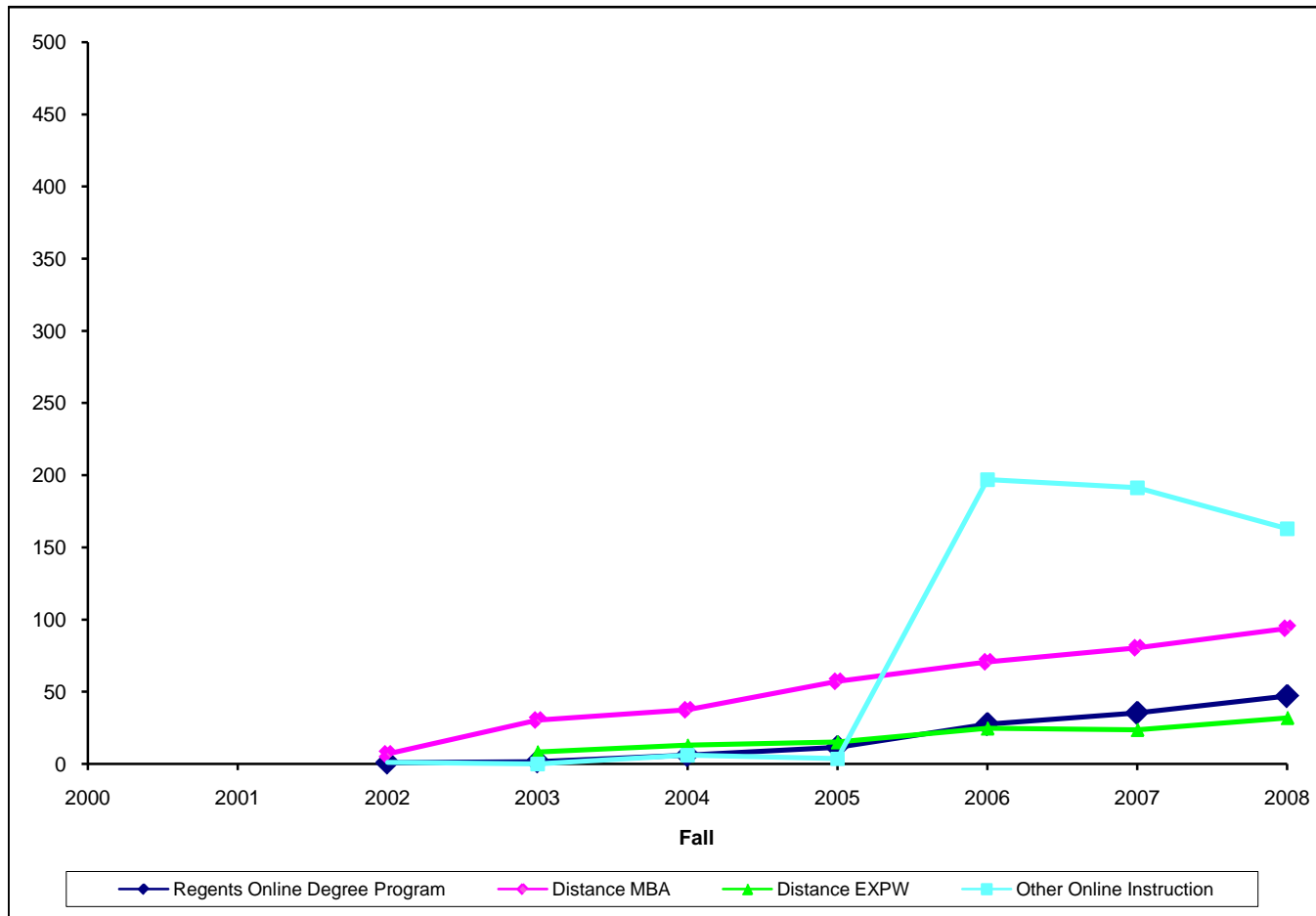
### E.3.d. Undergraduate Distance Education Full-Time-Equivalent Enrollment Fall 2000-2008

	2000	2001	2002	2003	2004	2005	2006	2007	2008
Regents Online Degree Program		17	54	88	115	124	142	164	174
Other Online Instruction		35	13	4	32	26	25	62	47
ALL		51	68	92	147	150	168	226	221



### E.3.e. Graduate Distance Education Full-Time-Equivalent Enrollment Fall 2000-2008

	2000	2001	2002	2003	2004	2005	2006	2007	2008
Regents Online Degree Program			1	2	6	12	28	35	47
Distance MBA			7	30	38	57	71	81	94
Distance EXPW				8	13	15	25	24	32
Other Online Instruction			1	0	6	4	197	191	163
ALL			9	40	63	88	320	331	336



### E.3.f. Distance Education Full-Time-Equivalent Enrollment Fall 2000-2008

	2000	2001	2002	2003	2004	2005	2006	2007	2008
Regents Online Degree Program		17	55	89	121	136	170	199	221
Distance MBA			7	30	38	57	71	81	94
Distance EXPW				8	13	15	25	24	32
Other Online Instruction		35	14	4	38	29	222	254	210
ALL		52	77	132	210	238	488	557	557

