

**TENNESSEE TECH UNIVERSITY**  
**College of Agricultural and Human Sciences**  
**ANNUAL REPORT 2011-2012**

The following information is a reflection of the accomplishments of the College of Agricultural and Human Sciences for the 2011-2012 Academic Year, and for the past five years where appropriate. Units reporting within the College include information from the following:

- School of Agriculture
- School of Human Ecology
  - Tennessee Early Childhood Training Alliance
  - Upper Cumberland Child Care Resource & Referral Center
- School of Nursing
- Oakley Sustainable Agriculture Center

**I. STATUS REGARDING FOLLOWING DELIVERABLES (see additional charts in appendix)**

**a. ENROLLMENT—Fall Semesters**

	<b>2007</b>	<b>2008</b>	<b>2009</b>	<b>2010</b>	<b>2011</b>
<b>COLLEGE TOTALS</b>	<b>860</b>	<b>1000</b>	<b>1054</b>	<b>1101</b>	<b>1115</b>

**b. NUMBER DEGREES AWARDED (Summer, Fall, Spring for each year)**

	<b>2006-07</b>	<b>2007-08</b>	<b>2008-09</b>	<b>2009-10</b>	<b>2010-11</b>
<b>COLLEGE TOTALS</b>	<b>141</b>	<b>179</b>	<b>181</b>	<b>207</b>	<b>199</b>

**c. DEGREE INNOVATIONS**

The three Schools and the Oakley Center have a number of innovative programs as outlined in individual reports contained within this document. In addition, the College has promoted several “travel-abroad” opportunities that include the following excursions taking place in the spring of 2012 that involve faculty and/or students from the College:

Argentina

Dominican Republic (Partner: Cookeville Rotary Clubs, Rotary District Organization)

Prague

Finland

Planned for 2012- 2013; the four above plus Paris, France.

## MAJOR NEW INNOVATIONS FOR THE COLLEGE:

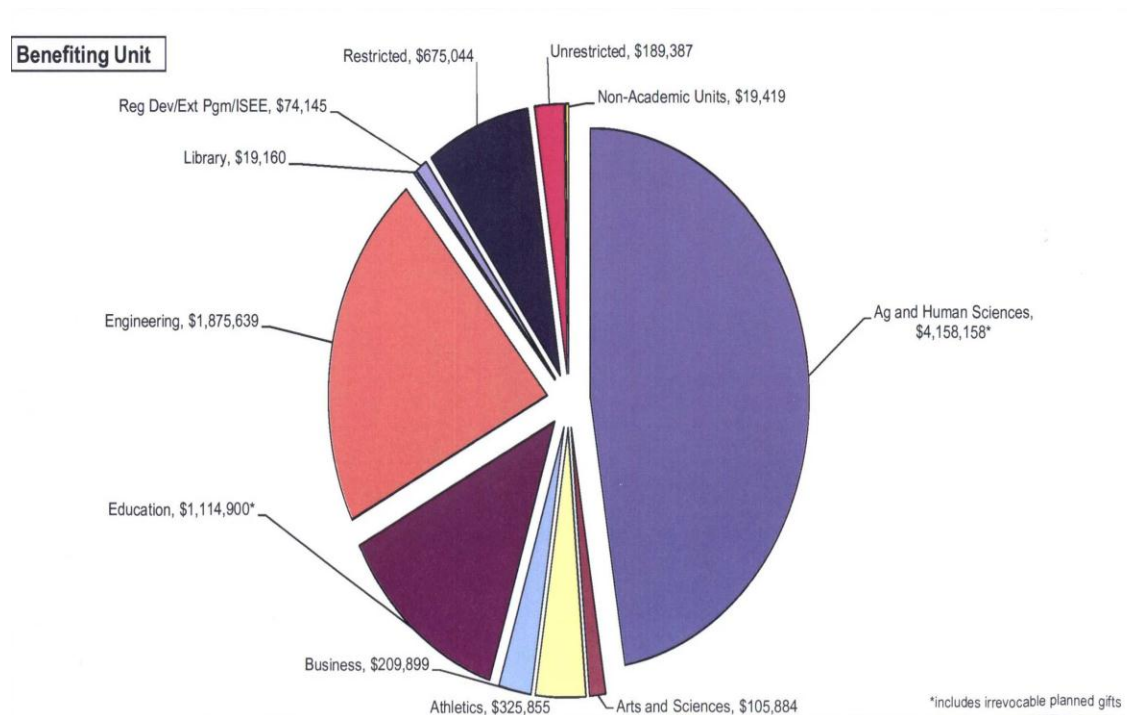
These will be detailed further in the individual School reports, but some of the highlights are:

- Creation of a new Child-Life Specialist Program (SOHE)
- Creation of a new Agri-Tourism Program (SOA)
- RN to BSN Track (SON)
- Emphasis on MSN recruitment program
- MS in Family Education and Community Services has been submitted from TTU to THEC ; (SOHE)

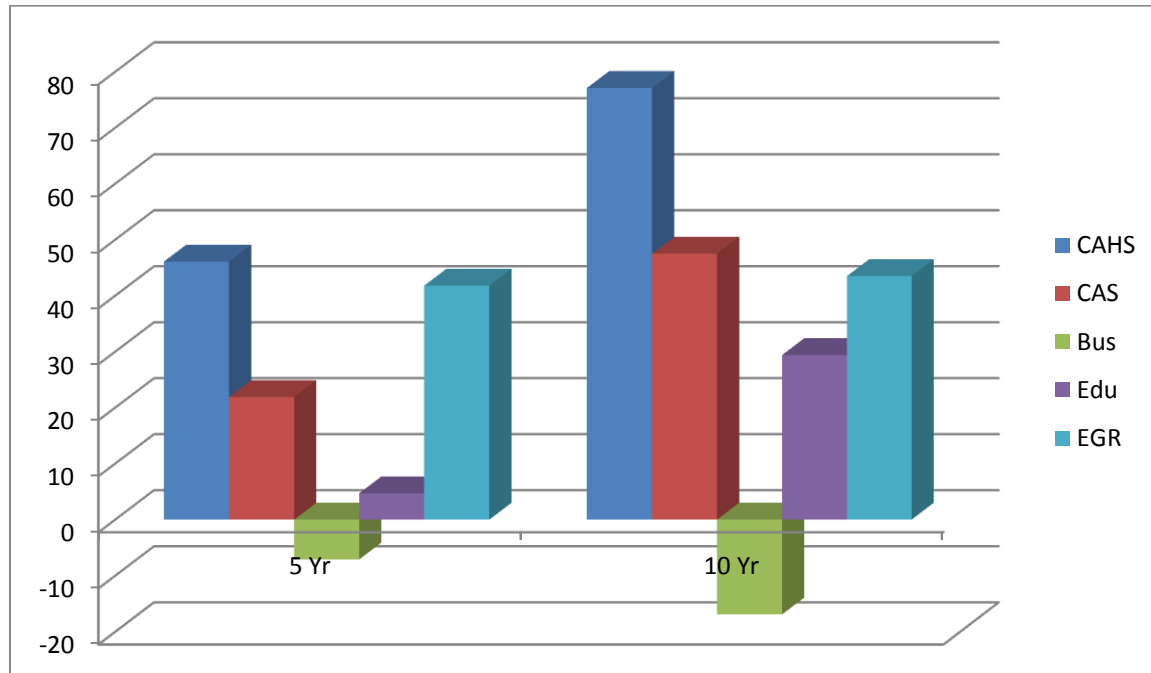
## GIFTS, as reported by University Development:

Developed a donor who is leaving a **\$2,000,000** bequest for scholarships in the College.

Currently in discussions with an individual who intends on making a donation of \$1,000,000 before the end of the current calendar year.



## Table 1. Percentage Growth, 5 & 10 Years



**TENNESSEE TECH UNIVERSITY**  
**School of Agriculture**  
**ANNUAL REPORT 2011-2012**

The following information is a reflection of the accomplishments of the School of Agriculture for the 2010-2011 Academic year, and for the past five years where appropriate.

**II. STATUS REGARDING FOLLOWING DELIVERABLES**

**a. RETENTION (Fall to Spring and Fall to Fall for First Time Freshmen Cohorts)**

	<b>2007</b>		<b>2008</b>		<b>2009</b>		<b>2010</b>		<b>2011</b>		<b>2012</b>	
	Fall-Spring %	Fall-Fall %	Fall-Spring %	Fall-Fall %	Fall-Spring %	Fall-Fall %	Fall-Spring %	Fall-Fall %	Fall-Spring %	Fall-Fall %	Fall-spring %	
<b>SCHOOL TOTALS</b>	<b>88.71</b>	<b>77.42</b>	<b>89.39</b>	<b>68.18</b>	<b>95.24</b>	<b>80.95</b>	<b>92.0</b>	<b>68.0</b>	<b>92.2</b>	<b>68.0</b>	<b>92.21</b>	

**b. ENROLLMENT—Fall Semesters**

	<b>2007</b>	<b>2008</b>	<b>2009</b>	<b>2010</b>	<b>2011</b>
<b>SCHOOL TOTALS</b>	<b>226</b>	<b>257</b>	<b>266</b>	<b>308</b>	<b>323</b>
Agribusiness Management	41	50	51	61	60
Agricultural Communications	4	3	0	2	4
Agricultural Education	19	22	27	34	39
Agricultural Engineering Technology	34	50	52	45	56
Agritourism**	0	0	0	1	3
Agronomy & Soils	8	8	7	4	9
Animal Science	32	26	33	45	47
Animal Science—Pre-Vet	53	67	57	77	69
Environmental Agriscience	7	8	11	9	15
Horticulture	10	7	8	11	8
Nursery & Landscape Management	9	8	7	8	7
Turfgrass Management	9	8	13	11	6

**\*\*Agritourism has just been initiated, so enrollment numbers are low**

**c. NUMBER DEGREES AWARDED (Summer, Fall, Spring for each year)**

	<b>2007-08</b>	<b>2008-09</b>	<b>2009-10</b>	<b>2010-11</b>	<b>2011-12</b>
<b>SCHOOL TOTALS</b>	<b>37</b>	<b>44</b>	<b>48</b>	<b>59</b>	<b>64</b>
Agribusiness Management	8	9	12	12	17
Agricultural Communications	2	1	0	0	2
Agricultural Education	0	4	3	3	6
Agricultural Engineering Technology	5	12	19	9	14
Agritourism**	0	0	0	0	0
Agronomy & Soils	1	1	2	1	0
Animal Science	10	8	6	19	13
Animal Science—Pre-Vet	4	4	1	5	4
Environmental Agriscience	2	3	2	2	3
Horticulture	3	0	0	3	2
Nursery & Landscape Management	1	1	1	2	3
Turfgrass Management	1	2	3	3	0

**\*\*Agritourism has just been initiated, so there are no retention numbers as of yet**

**d. DEGREE INNOVATIONS**

**Agricultural Engineering Technology**—Proposal for Accreditation—Process began Fall 2010

- Now in the second of a multi-year process. The curriculum has been changed to meet the criteria for Accreditation, and now must be implanted for the committee to judge its effectiveness. Projected completion of this process would be 2012-13

**Restructuring of School Concentrations**—

- Based on student needs and the ever changing face of Agriculture, the faculty voted to re-vamp several of our concentrations into broader and more inclusive topics. We believe the changes will prove more useful for today's students and a more efficient use of faculty time. The appropriate applications and forms are being completed this summer for submission in Fall 2011. Below is an outline of changes implemented this year:

**Agricultural Engineering Technology**

- Continuing in second year with the implementation of the recently re-vamped coursework for the ATMAE accreditation process
- The conversion of the old calf parlor to a new laboratory is completed, equipment will be moved across during the summer to begin use in the fall of 2012

**Plant & Soil Science**

- A completely new concentration combining Agronomy & Soils, Environmental Agriscience, Horticulture, Nursery & Landscape and Turfgrass. The draft of this proposal is completed and will be submitted in the fall of 2012.
- This new concentration will offer three options—Crop Science; Management; and Environmental Soil Science. Students opting for Crop Science will be able to specialize in horticulture, organic, or traditional agricultural cropping systems. Those opting for the Management area can specialize in Nursery Management or Turfgrass Management.

Finally, the Environmental Agriscience option will serve as a lead-in to one leg of our new masters degree.

#### **Development of a Masters Degree**

- The letter of intent for a Master of Science in Agriculture is currently in process. Projected deadline for submission is July 15, 2012.

### **III. COLLABORATIVE EFFORTS**

- **QEP—Basement Mural---**Dr. Janice Branson and Dr. Pat Coleman  
Work on this project, begun in 2010, continues. At the close of 2011 the mural was 90 % completed.  
“Agricultural Communication using Visual Media”—This project included both art and agriculture students. The mural runs the length of the north-south hall in South Hall’s basement.
- The use of service learning projects often results in greater connections with the community at large. The School of Agriculture boasts a variety of service-learning opportunities, two that are directly related to courses are:
  - a. ANS 1200, Introductory Animal Science—Students are required to work in small groups of two or three and spend a period of five weeks volunteering with a local business or agricultural producer on projects relating to animals as approved by the instructor.
  - b. AGED 3210, Professional Leadership—In this course students are required to complete 20 hours of volunteer work with the organization or cause of their choosing (once approved by faculty).

### **IV. PROGRAMS AND PROJECTS**

- AGED 4950, International Experience 2012--Prague. Second year of travel course developed to provide insight into the world of international agriculture—includes two weeks in Prague. (Frazier, Best & Foster).
- Received donation of log cabin by the Koger family. The cabin was disassembled on site and moved to the heritage farm by Agricultural Engineering Management students and slated for re-assembly in summer 2012 (Bagley, Foster, & Baier)
- Completed search for Agritourism faculty and hired Dr. Stacy Tomas to fill the role.
- Initiated recruitment efforts for the Animal Science faculty position, search was completed and Dr. Dennis Fennewald hired—to arrive August 1, 2012.

## V. HIGHLIGHTS OF KEY AREAS

### a. FACULTY RESEARCH

- **Awarded grants**

- a. **\$11,598.00** – Higher Education Grant, Tennessee Department of Education. Professional Development for secondary level Agricultural Education teachers in Tennessee (Frazier)
- b. **\$4207**—Tennessee Certified Arboretum Program Coordination. Contracted through Coorts Memorial Arboretum by Tennessee Urban Forestry Council July 2010-June 2011. (Airhart)
- c. **\$5500**—Tennessee Certified Arboretum Program Coordination. Contracted through Coorts Memorial Arboretum. By Tennessee Urban Forestry Council July 2011-June 2012. (Airhart)
- d. **\$6000**—Production business plans contracted through TTU, to support USDA Guaranteed Loans
- e. **\$5000**—Faculty Research Grant, TTU—“An economic analysis of yield and quality differences associated with two different high-tunnel production techniques for heirloom tomatoes. (Best)
- f. **\$6960**—Natural Resources Conservation Service. “Rapid Assessment of Soil Carbon for MLRA 18 (Branson)
- g. **\$149,000**—USDA Higher Education Challenge Grant. “Food Safety in Agritourism” (Branson, Anderson, Frazier, Greene)

- **Published Abstracts**

Abourlesih, M. Y., Wells, M. J., **Stearman, G.K.** (2011). Chirality in the environment. First United Arab Emirates Conference on Pure and Applied Chemistry (ECPAC11), Sharja, UAE.

- **Oral Presentations**

**Green, B. B.** (2011). “Understanding Hay Quality Analysis,” Putnam County Cattlemen’s Association.

Abourlesih, M. Y., Wells, M. J., **Stearman, G.K.** (2011). Chirality in the environment. First United Arab Emirates Conference on Pure and Applied Chemistry (ECPAC11), Sharja, UAE.

**Airhart, D.** (2011). Myths that kill trees. Keynote for Middle Tennessee Grounds Management Short-Course, Franklin.

**Airhart, D.** (2011). Pruning Plants. Concurrent Session Speaker, Middle Tennessee Grounds Management Short-Course, Franklin.

**Airhart, D.** (2011). ANSI A300 Standards: Tree, shrub and other woody plant management standard practices. Tennessee Landscape Association Winter Education Seminar. Pigeon Forge.

- Airhart, D.** (2011). Landscape tree maintenance. Sequatchie County Master Gardner Association Training Session.
- Airhart, D.** (2011). Picking and planting trees. Williamson County Master Gardner Association's Bloom "N" Garden Expo. Franklin.
- Airhart, D.** (2011). Picking and planting trees. Cumberland County Master Gardner Association's Spring Flower & Garden Show, Crossville.
- Airhart, D.** (2011). Cicada ovipositing damage evaluation. Heartland Crop Insurance Adjuster Training. Bowling Green, KY.
- Airhart, D. & McClellan, G.** (2011). Trees on the internet: Tree identification, diagnosis, and resources. Tennessee Urban Forestry Council Annual Conference. Ellington Agricultural Center, Nashville.
- Airhart, D.** (2011). Tree root stress: Prevent tree damage during installation and maintenance. Professional Landscape Association of Nashville. Samara Farms
- Airhart, D.** (2011). Evaluating tree defects: Diagnosis and evaluating problems in the field. Professional Landscape Association of Nashville. Samara Farms
- Airhart, D.** (2011). Selecting and planting landscape trees. Fairfield Glade Garden Club. Fairfield Glade Community Church.
- Airhart, D.** (2011). Bee Friendly Plants. Tennessee Bee Association. Cookeville.
- **Research Reports**

**Airhart, D.** (2011). Urban Forestry Planning & Codes Evaluation Project, City of Cookeville. Funded by and delivered to Tennessee Division of Forestry.

**Stearman, G.K.** (2011). Final report to Tennessee Department of Agriculture, "Waters Organic Farm Startup.

**Stearman, G.K.** (2011). Final report for USDA grant, "Compost and tillage effects on soil and water quality, earthworms, and crop yield."

**Stearman, G.K.** (2011). Organic carbon faculty research grant at TTU.
  - **Articles in Refereed Journals**

**Frazier, D. C. & Ball, A. B.** (2011). Perceptions of SBAE teachers regarding the purpose and current outcome of SBAE curriculum. Submitted for publication in the Journal of Agricultural Education.

**Frazier, D. C. & Ball, A. B.** (2011). Perceptions of Agricultural Education State Staff regarding the purpose and current outcome of SBAE curriculum. Submitted for publication in the Journal of Agricultural Education.

**Stearman, G. K., & Dodson, R.** (2011). Organic vegetable production as affected by compost. (Biological Science and Horticulture (submitted).

Eisler C., & **Stearman, G.K.** (2011). Peat absorption of Simazine as affected by particle size, pH, and moisture. Soil Science Society of America Journal. (accepted/in progress).



- **Articles in Discipline Magazine or Non-refereed Journals**

#### **DISCIPLINE MAGAZINES**

#### **BOOKS PUBLISHED**

**Best, M. (2011- )** “*Entrepreneurship on Small Farming Operations*,” Ohio University Press—IN PROCESS

#### **b. INNOVATION RESULTING IN SAVINGS, EFFICIENCY AND/OR IMPROVED OUTCOMES**

- Implementing restructuring of Farm Management Systems to improve student involvement in experiential education.
- Utilizing faculty and staff teams to better utilize teaching farm facilities.

#### **c. FACULTY, STAFF AND STUDENT AWARDS**

##### **i. Faculty & Staff Awards**

- Dr. Michael Best, National Association of College Teachers of Agriculture (NACTA) Teaching Award of Merit
- Dr. Byron Housewright and Dr. David Frazier, SOA Outstanding Faculty Members (selected by student vote)
- College of Agriculture and Human Sciences Gold Cap Award presented to (Best, Foster, Branson,
- Dr. Michael Best received the Distinguished Professional Contribution Award from the Southern Agricultural Economics Association in February 2011.

##### **ii. Student Awards**

- Cayce McDonald served as Tennessee’s candidate for national officer elections for the National FFA Association at the National Convention in Indianapolis, Indiana in October.
- Katlin Dickens elected National Delta Tau Alpha (Agricultural Honor Society) Eastern Vice-President.
- Tennessee FFA Alumni Convention Collegiate Events Competition winners:
  - **TTU Collegiate FFA selected as #1 Outstanding chapter in state**
  - TAAE Internship—Chase Murray. 1<sup>st</sup> place
  - Agribusiness Job Interview—Peyton Graham, 1<sup>st</sup> place
  - Agricultural Education Job Interview—Cayce McDonald, 1<sup>st</sup> place
  - Agricultural Professions Job Interview—James Flatt, 1<sup>st</sup> place
  - Agricultural Production Job Interview—Alyssa Fee, 2<sup>nd</sup> place
  - Agricultural Quiz Bowl Team (Amanda Craighead, Andy Ligon, Andrew Pearson, and Timothy Pearson)—2<sup>nd</sup> place
  - Extemporaneous Public Speaking—Courtney Walker, 4<sup>th</sup> place

- Prepared Public Speaking—Katelyn Butcher, 1<sup>st</sup> place
- Prepared Public Speaking—Amanda Scott, 2<sup>nd</sup> place
- Scrapbook—Becca Hardin, 3<sup>rd</sup> place
- Discussion Meet—Lee Allen Turner, 3<sup>rd</sup> place
- TAAE T-shirt design—3<sup>rd</sup> place
- High selling Collegiate FFA Basket—Marissa Sealy
- At the Tennessee FFA Annual Convention in Gatlinburg two of our students were elected as state officers for 2011-2012:
  - Alyssa Fee, Western Region Vice-President
  - Elissa McLerran, State Secretary
- Summer Internships awarded to TTU SOA students:
  - Austin Anderson, Syngenta Crop Protection – AR
  - Nick Bussey, Hubbard LLC
  - Peyton Graham, Farm Credit Services
  - Joey Glisson, Oakmont Country Club-Oakmont, PA
  - Justin Hill, Overton County Tennessee Farmers Cooperative
  - Caleb Hodges, Monsanto
  - Cayce McDonald, National Association of Agricultural Educators
  - Elissa McLerran, American Farm Bureau Federation
  - Jessica Sartin, Farm Bureau state office in Columbia
  - Greg Walker, US Army Corps of Engineers

#### **d. COMMUNITY SERVICE ACTIVITIES**

- Farm Days with Tennessee Farm Bureau (all faculty and staff)
- Putnam County Soil Conservation District Tree Sale (Branson & Foster)
- Tennessee FFA Board of Directors, Board of Trustees, State FFA Officer Selection Nominating Committee, National FFA Officer Candidate Selection Committee (Frazier)
- Tennessee FFA Goodwill Luncheon (all faculty)
- Tennessee Farm Bureau/TTU School of Agriculture Collegiate Debate (Frazier)
- Tennessee FFA Career Development Event hosts for Dairy Products, Floriculture, Nursery/Landscape (Frazier, Branson, Airhart, Greene)
- Presentations for high school FFA members and/or secondary level agricultural education teachers (12 in-state, 3 out-of-state) (Frazier)
- Dual enrollment/Dual Credit workshop for teachers (Greene and Byler)
- Hosted the “Heartland Apicultural Society” annual Conference (Greene)
- Assisted in the development of the Putnam County Beekeeper’s Association (Greene)

- Hosted the Tennessee Tech SOA Agriscience Quiz Bowl preliminaries (at Hyder-Burks) and final rounds at Tennessee Farm Bureau Young Farmers Annual Meeting (all faculty)
- TTU host to “Heartland Apicultural Society Conference” July, 2011 (Greene)
- Regional Science Fair Animal Use Review Committee (Greene)
- Tennessee Beef Agribition, Lebanon, TN (Greene)
- Putnam & White Counties’ Elementary School “Ag Camp” at Hyder-Burks Pavilion (Greene)
- Presentation, “Beekeeping,” Nashville Tech horticulture class (Greene)
- Judge at Tennessee State 4-H Horse Bowl, Hippology & Communications
- “Picking, planting, pruning young trees,” Master Gardener Training Seminar, **two presentations** for the Chattanooga Association of Landscape Professionals, Chattanooga and Cumberland County Extension Services Country Store, Crossville. (Airhart)
- “New ideas on elemental nutrition,” Chattanooga Association of Landscape Professionals and UT Extension. Green Express Horticulture short course. (Airhart)
- “Picking, planting & pruning trees,” and “New ideas on elemental nutrition,” **two presentations** for Tennessee Nursery Landscape Association Winter Seminar, Pigeon Forge, TN. (Airhart)
- Landscape Tree Maintenance,” Sequatchie County Master Gardener Training Session, Sequatchie-Bledsoe Community College. (Airhart)
- Using Horticulture Competencies to prepare students for Career Development Events, Career and Technical Education Conference, MTSU, Murfreesboro. (Airhart)
- “Elemental Nutrition for Trees, Revisited.” Tennessee Green Industry Field Day, Nursery Research Center, McMinnville. (Airhart)
- Tennessee Tech Garden Club Auction—plant donations and identification assistance. (Airhart)
- District FFA Agricultural Mechanics Career Development Event (Baier, Frazier)
- Liaison to Farm Bureau Farm Days for “Ag in the Classroom” at Hyder-Burks Pavilion.
- Attended and aided with booth set-up for *Ag Day on Capitol Hill*, May 3, 2011. (Foster)

**TENNESSEE TECH UNIVERSITY**  
***School of Human Ecology***  
**ANNUAL REPORT 2011-2012**

The following information is a reflection of the accomplishments of the School of Human Ecology for the 2011-2012 Academic year, and for the past five years where appropriate.

**VI. Deliverables**

**a. RETENTION (Fall to Spring and Fall to Fall for First Time Freshmen Cohorts)**

	<b>2007</b>		<b>2008</b>		<b>2009</b>		<b>2010</b>		<b>2011</b>	
	Fall-Spring %	Fall-Fall %	Fall-Spring %	Fall-Fall %	Fall-Spring %	Fall-Fall %	Fall-Spring %	Fall-Fall %	Fall-Spring %	Fall-Fall %
<b>SCHOOL TOTALS</b>	<b>79.17</b>	<b>45.83</b>	<b>100</b>	<b>80</b>	<b>93.10</b>	<b>75.86</b>	<b>95.0</b>	<b>80</b>	<b>100</b>	<b>NA</b>

**b. ENROLLMENT—Fall Semesters**

	<b>2007</b>	<b>2008</b>	<b>2009</b>	<b>2010</b>	<b>2011</b>
<b>SCHOOL TOTALS</b>	<b>202</b>	<b>194</b>	<b>175</b>	<b>201</b>	<b>205</b>
Child Development & Family Relations	33	58	31	36	40
Family & Consumer Sciences Education	19	13	14	17	17
Food, Nutrition, & Dietetics	68	54	57	68	70
Housing & Design	43	36	43	44	43
Merchandising & Design	39	33	30	34	34

**c. NUMBER DEGREES AWARDED (Summer, Fall, Spring for each year)**

	<b>2007-08</b>	<b>2008-09</b>	<b>2009-10</b>	<b>2010-11</b>	<b>2011-2012</b>
<b>SCHOOL TOTALS</b>	<b>47</b>	<b>52</b>	<b>39</b>	<b>45</b>	<b>49</b>
Child Development & Family Relations	8	13	7	14	14
Family & Consumer Sciences Education	4	5	5	1	4
Food, Nutrition, & Dietetics	15	18	15	12	16
Housing & Design	15	8	6	10	8
Merchandising & Design	5	8	6	8	7

#### **d. DEGREE INNOVATIONS**

##### **Child Life – Program begins Fall 2011**

- Cara Sisk, Certified Child Life Specialist, was hired in Summer 2011 to develop and deliver the Child Life option within the School of Human Ecology. A majority of the coursework has been developed, with guidance from the Child Life Council. Currently, 17 students are enrolled in this option.

##### **Development of a Masters Degree**

- The letter of intent was submitted to the Tennessee Higher Education Council in May 2012. Tentative start date is Fall 2013.

#### **VII. COLLABORATIVE EFFORTS**

- *Courses and Curriculum*
  1. Anderson and Swafford took the lead to finish graduate proposal and curriculum development. Letter of Intent was completed during Spring 2012 and submitted to Provost Stephens.
  2. All HEC faculty collaborated to develop at least one graduate course from each concentration area to be the foundation of the new on-line Master's degree in Family Education and Community Services. A total of 12 new graduate courses were developed and sent to the Graduate Committee for review and approval.
  3. Sisk developed 7 courses needed for the Child Life Curriculum, as well as Program Admission Requirements.

#### **VIII. PROGRAMS AND PROJECTS**

1. Faculty Travel: Dr. Mullens led a Chicago Fashion Study Tour in May 2012 with 10 students.
2. Director Dr. Sue Bailey retired on November 1, 2011. Dr. Melinda Anderson was appointed Interim Director.
3. Search for permanent Director was initiated in Spring 2012.
4. School of Human Ecology hosted Regional 4-H camp, July 2011
5. School of Human Ecology hosted Regional Family and Community Educators (FCE) camp for the first time in May 2012
6. Dr. Liz Mullens participated in ITAA Culture and Industry tour to Italy, June 2012. She plans to return with students for the Study Tour in May 2013.

## IX. HIGHLIGHTS OF KEY AREAS

### a. FACULTY RESEARCH

#### Awarded Grants (research and service)

1. \$11,889.00, Howard, M. (PI) and Swafford, M. (Support Personnel), Healthy Start for Upper Cumberland Families and Young Children, Stephens Center (grant held in the College of Education)
2. \$55,539.00, Dainty, H., (PI) Jackson, E., & Swafford, M. (Support Personnel). TDE Special Education Summer Institute Grant Strand II (grant held in the College of Education)
3. \$18,050.00, Swafford, M. (PI) and Jolley, L. (Consultant). FACS Career Technical Grant. Tennessee Department of Education
4. \$296,066.00, Swafford, M. (PI). TECTA Tennessee Early Childhood Technical Assistance Grant.
5. \$1,250.00, Plant, J. Tablet Computing in Instruction Award, TTU Technology Institute.
6. \$360,455.00, Jolley, L. (Co-PI) and Sisk, C. (Co-PI). Child Care Resource and Referral Grant, Signal Centers.
7. \$4,000.00 Cunningham, C. and Miller, E. (student) URECA! Summer Grant.
8. \$680.00. Cunningham, C and Hackett, T (student) URECA! Mini-grant.

#### Poster/Oral Presentations

- Anderson, M. and Swafford, M. (2012). *Dual Credit*. Tennessee Association of Family and Consumer Sciences Annual Meeting, Cookeville, TN. (Oral presentation).
- Bailey, S., Elliot, B., Werkheiser, R. and LeFevre, T. (2011). Help or Hype: Rachel Ray's Thirty Minute Menus. American Association of Family and Consumer Sciences Annual Meeting, Phoenix, AZ. (Juried, Oral presentation)
- Bailey, S. (2011). Computer-Aided Apparel Design Software. Tennessee Career and Technical Education Annual Meeting. Murfreesboro, TN (Invited, Oral presentation).
- Swafford, M. (2011). *What is happening at Putnam County Fair*. Cookeville, TN (video clip describing how to judge domestic arts, filmed by WCTE).
- Swafford, M. (2011). *Enhancing language development in young children*. Healthy Start Holland J. Stephen's Center, Livingston, TN (Oral presentation)
- Anderson, M., Bailey, S., Cunningham, C., Jolley, L., Mullens, L., Plant, J., Sisk, C., and Swafford, M. (2012). *Model for leadership change to assure sustainability in FCS higher education units*. Association for Family and Consumer Sciences 2012 Annual Conference and Expo, Indianapolis, IN. (National poster presentation)
- Jolley, L. (2012). *Leadership secrets of Santa Claus: how to get big things done in your FACS classroom this year!* Tennessee State Department of Education/Career Technical Summer Conference, MTSU, Murfreesboro, TN.
- Jolley, L. (2011). *Everyone has a story...what's yours? Understanding the essence of human development*. Tennessee State Department of Education/Career Technical Summer Conference, MTSU, Murfreesboro, TN

- Plant, J. (2011). *Housing and Interiors: A Residential Design Postcard Assignment & Evaluation*. Career and Technical Education Summer Conference, MTSU, Murfreesboro, TN (Oral Presentation).

#### **Articles in Refereed Journals**

- Swafford, M. & Jolley, L.A. (2012, January). [Submitted for review; in process of revision] Attachment: Promoting secure relationships in families. *Journal of Family & Consumer Sciences*.
- Swafford, M. & Anderson, M. (2011). Hydroponic gardening in the Career and Technical Education Classrooms: Impacting Obesity. *Techniques* (Nov/Dec)
- Swafford, M. Wingate, K., Zumgumny, L., & Richey, D. (2011) Poverty, family-centeredness, and empowerment in early intervention: Perspectives from families. *Topics in Early Childhood Special Education*. Submitted.
- Sisk, C., Walker, E. Gardner, C., Mandrell, B., & Grissom, S. (2012, in progress). *Building a legacy for children and adolescents with chronic disease*.

#### **Articles in Non Refereed Publications**

- Swafford, M. (2011). *Macon county FACS: growing to meet the needs of students*. Just the FACS. Submitted.

#### **b. BOOKS PUBLISHED**

- Not applicable

#### **c. INNOVATION RESULTING IN SAVINGS, EFFICIENCY AND/OR IMPROVED OUTCOMES**

- First Human Ecology Administrative Summit, held in November 2011. TTU Administrators were invited to attend a luncheon in Friday Café, and hear about the unique strengths and challenges for the School of Human Ecology.

#### **d. FACULTY, STAFF AND STUDENT AWARDS**

- Jeff Plant, nominated (for 3<sup>rd</sup> time) for TTU Outstanding Faculty Award in Teaching
- Jeff Plant achieved Certification as a Personal Family and Financial Educator (CPFFE) from the American Association of Family & Consumer Sciences
- Lee Ann Jolley, Gold Cap Award, College of Agricultural & Human Sciences
- Melinda Swafford, Gold Cap Award, College of Agricultural & Human Sciences
- Sue Bailey, Recipient, Who's Who in North American Education
- Melinda Swafford, Recipient, Who's Who in North American Education
- Melinda Swafford, Nominated, TTU Outstanding Faculty Service Award

#### **Student Award**

- Chelsea Barnes, research poster is selected for presentation at "Posters on the Capitol", Nashville, February 2012



## **e. COMMUNITY SERVICE ACTIVITIES**

### **National and State**

- Melinda Anderson elected President-elect of the Tennessee Dietetics Association
- Melinda Anderson reviewer for Wiley Publishing
- Sue Bailey, Melinda Swafford, and Lee Ann Jolley serve the Tennessee Department of Education as Family and Consumer Sciences Teacher Educators.
- Sue Bailey reviewer for Pearson Publications; Journal of Family and Consumer Sciences; and TNFACS-ER Website.
- Sue Bailey site visitor for Council for Accreditation – AAFCS
- Sue Bailey member Nominating Committee, Kappa Omicron Nu
- Sue Bailey member Tennessee Early Childhood Higher Education Alliance
- Sue Bailey member Tennessee Pre K-K State Advisory Council
- Sue Bailey member TECTA – State Steering Committee
- Cathy Cunningham reviewer for Jones and Bartlett Publishers
- Lee Ann Jolley reviewer of Development of Children and Adolescents by Travers
- Lee Ann Jolley reviewer of Adulthood: an introduction by Curl-Langer
- Lee Ann Jolley consultant for State of Tennessee Department of Education, Career-Technical division
- Jeff Plant serves as President of the Tennessee Association of Family and Consumer Sciences (2011-2012)
- Jeff Plant serves on the State Board of the Tennessee Association of Family and Consumer Sciences
- Jeff Plant serves as an American Association of Family and Consumer Sciences Senator from Tennessee
- Melinda Swafford serves on the University of Tennessee and Tennessee State University Extension Services State Advisory Board
- Melinda Swafford reviewer for the Journal of Family and Consumer Sciences, Tennessee's Children, and TNFACS-ER Website
- Melinda Swafford serves Arc of Tennessee as the Executive Board Member at Large

### **Local and Regional**

- TTU Majors Fair, 2012 – all faculty
- Academic Advisors to Human Ecology Student clubs: all faculty
- Liz Mullens serves as member, Board of Directors, Uplands Retirement Village, Pleasant Hill TN
- Melinda Swafford serves on the Executive Board of Directors, Putnam County Rural Health Care Clinic
- Melinda Swafford serves as a trainer for Holland Stephens Center Healthy Start Program
- Cara Sisk serves on the Ad-Hoc Committee on Early Childhood Licensure, PreK-K, Tennessee Department of Education
- Sue Bailey serves as Board Member for Van Buren County and Metro-Nashville Career and Technical Education Programs.
- Sue Bailey serves on Volunteer State Community College ECED Advisory Council



- Cathy Cunningham sponsored booth at TTU Health Fair
- Cathy Cunningham and HEC Students prepared lunch for patients and families at Ronald McDonald House, Nashville

**TENNESSEE TECH UNIVERSITY**  
**Whitson-Hester School of Nursing**  
**ANNUAL REPORT 2011-2012**

**SCHOOL-WIDE HIGHLIGHTS OF 2011-2012**

*Undergraduate Academic Highlights*

- Conversion to a five-semester upper-division curriculum.
- Revision of RN to BSN track and approval of concurrent enrollment.
- Shared governance & faculty leadership in the admission process.
- NCLEX-RN pass rates remaining above the national average.

*Graduate Academic Highlights*

- Increased teaching in RODP MSN.
- Increased number of TTU home-based students admitted to RODP MSN.
- NLN reaccreditation of RODP MSN.

*Scholarship*

- Defining a scholarly mission based on the Boyer Model of Scholarship (SoTL).
- Establishment of an ad hoc Scholarship of Teaching & Learning (SoTL) Committee.
- Increased faculty refereed presentations regionally, nationally, & internationally.
- Progress toward increasing the number of faculty with doctorates.
- Promotion of two faculty members and tenure for one of the two.
- Two successful study abroad programs, Finland/Russia and Argentina
- Receipt of TTU internal grants, three tablets, two research, and a QEP Award
- Anne Floyd Koci Awards for faculty excellence.

*Student Achievement*

- National and Regional elected officers in the Student Nurses Association.
- Multiple student awards and honors.

*Customer/Student Support*

- Hiring of a new Academic Advisor.
- Successful search and hiring of two tenure track faculty.
- Cross training of staff to improve customer service.
- Participation in the Tennessee Clinical Placement System.
- Development of social media support for students, parents, and alumni.

*Community Collaboration and Development Activities*

- Jeannette Travis Foundation donation (\$50,000) to support students.
- Creation of and fundraising for the Dr. Sharon S. Thompson Courage Award.
- Gordon donation (\$10,000) for student scholarships.
- First Lawrence Hester & Jean Whitson Hester Memorial Awards given.
- Service projects with students, increasing community health and collaboration.

- Hospice Conference and Collaboration with the Hospice Fund Advisory Board.
- Participation in the Highland Health Initiative Committee and Get Fit Campaign.
- Analysis, staff development, and consultation for new CRMC Pediatric Unit.

The following information is a reflection of the accomplishments of the Whitson-Hester School of Nursing (WHSON) for the 2011-2012 Academic year, and for the past five years where appropriate.

## **X. STATUS REGARDING FOLLOWING DELIVERABLES**

### **a. RETENTION (Fall to Spring and Fall to Fall for First Time Freshmen Cohorts)**

	<b>2007</b>		<b>2008</b>		<b>2009</b>		<b>2010</b>		<b>2011</b>	
	Fall-Spring %	Fall-Fall %	Fall-Spring %	Fall-Fall %	Fall-Spring %	Fall-Fall %	Fall-Spring %	Fall-Fall %	Fall-Spring %	Fall-Fall %
<b>SCHOOL TOTALS</b>	90.83	<b>77.98</b>	98.11	<b>82.08</b>	95.24	<b>84.35</b>	92.19	<b>79.69</b>	95.14	<b>NA</b>

### **b. ENROLLMENT—Fall Semesters**

	<b>2007</b>	<b>2008</b>	<b>2009</b>	<b>2010</b>	<b>2011</b>
<b>SCHOOL TOTALS</b>	<b>432</b>	<b>549</b>	<b>613</b>	<b>592</b>	<b>627</b>
BSN – Upper Division	118	160	183	190	188
Lower-Division Nursing Majors	286	346	389	361	393
RODP MSN	28	43	41	41	46

### **c. NUMBER DEGREES AWARDED (Summer, Fall, Spring for each year)**

	<b>2007-08</b>	<b>2008-09</b>	<b>2009-10</b>	<b>2010-11</b>	<b>2011-12</b>
<b>SCHOOL TOTALS</b>	<b>57</b>	<b>74</b>	<b>95</b>	<b>103</b>	<b>88</b>
BSN – Upper Division	<b>46</b>	<b>67</b>	<b>81</b>	<b>91</b>	<b>74</b>
RODP MSN	<b>11</b>	<b>7</b>	<b>14</b>	<b>12</b>	<b>14</b>

### **d. DEGREE INNOVATIONS**

#### ***Completed***

#### **Conversion to a Five-Semester Upper-Division Nursing Curriculum**

- In the Whitson-Hester School of Nursing's four-semester upper-division nursing program, students were required to learn the fundamental skills of nursing as well as assessment skills in their first semester. Simultaneously, they were being asked to learn and apply complex disease processes and nursing care in their first medical-surgical course. This complexity had an impact on the students' subsequent learning in the remainder of the clinical courses, particularly in the medical-surgical nursing courses, and led to high levels of stress for students. Revision of the curriculum to be offered over five semesters aligns our program with a nationwide trend that allows students to begin the upper-division program in the second semester of their sophomore year. The five-semester upper-division program, which will be launched Fall Semester 2012, will be more conducive to learning and allow us to appropriately sequence courses. To transition to the five-semester curriculum, two cohorts of students have been admitted for Fall

Semester 2012. For Fall Semester, forty (40) students will enter and progress through the four-semester curriculum while twenty-five (25) students will comprise the first cohort to enter and complete the five-semester curriculum. Starting Spring Semester 2013, all students entering upper-division nursing will be enrolled in the five-semester curriculum. Transitioning to a five-semester curriculum will increase the number of students enrolled in upper-division nursing from an average of 192 students to 240 students.

### **RN to BSN Track of the Upper-Division Nursing Program**

- Currently, the WHSON offers Registered Nurses (RNs), who possess either an Associate in Applied Sciences (AAS) or an Associate Degree in Nursing (ADN), the opportunity to complete the Bachelor of Science in Nursing degree (BSN). Historically, enrollment in the RN-BSN track has been minimal. The RN to BSN track was revised to offer courses in this track primarily online and in a manner consistent with the needs of employed RNs

### **RN to BSN Track Concurrent Enrollment/Retention of TTU Lower-Division Nursing Majors**

- In addition to the aforementioned revision of coursework in the RN to BSN track, faculty approved concurrent enrollment in the RN to BSN track to allow students currently enrolled in nursing at community colleges to concurrently enroll at TTU and begin completion of their BSN. Additionally, concurrent enrollment allows an alternate path to a BSN for qualified applicants, who are TTU lower-division nursing majors denied admission to upper-division nursing due to enrollment caps. Prof. Barbara Jared has been granted release time to coordinate the RN to BSN track. Funds have been allocated by the University to develop marketing materials to assist with recruitment of students into the RN to BSN track and marketing plans are in process.

### **Enhanced Opportunities for Clinical Experiences – TN Clinical Placement System**

- Competition for high-level clinical experiences for nursing students is a challenge in nursing education. This past year, faculty and the School addressed this challenge in two ways: 1) cultivating relationships with community health care agencies and professionals that allowed students “real life” innovative experiences in community health and 2) joining the Tennessee Clinical Placement System. The latter has provided opportunities for expanding access to clinical sites. Students now have the opportunity for clinical experiences in the Upper Cumberland Region as well as in the regions of Knoxville, Nashville, and Chattanooga. Joining the TCPS has allowed negotiation of contracts and clinical experiences with large health care systems such as East Tennessee Children’s Hospital in Knoxville, Vanderbilt University Medical Center, and Erlanger Health System. The addition of these larger health care systems in concert with health care agencies in the Upper Cumberland Region will provide students a greater variety of clinical experiences and ultimately, better employment opportunities upon graduation. For Academic Year 2011-2012, Prof. Bedelia Russell assumed the role of School liaison with the TN Clinical Placement System.

### **Development of Faculty/Student/Alumni Social Media Tools**

- Prof. Bedelia Russell established and monitors the Whitson-Hester School of Nursing Facebook page, which allows alumni, students, and our communities of interest to interact and to follow WHSON events.

- Prof. Susan Reeves established and monitors a Facebook page that features one of the School's simulators, Marlene Whitster. This page allows lower-division and upper-division students the opportunity to ask questions and receive information of interest to undergraduate nursing students. Nursing research has shown such Facebook pages to be beneficial for students. Faculty members are studying the effects of this type of social media interaction on student retention.

### *In Process*

#### **Improved Student Support, Advisement, Recruitment – In process**

- Retention of all nursing students and recruitment into the RN to BSN track and MSN program are priorities in the School of Nursing. Recognizing that quality advisement and support of student are crucial to those priorities, the School has taken steps to improve its advisement of students with an emphasis on improved customer service: 1) a new Academic Advisor, Mr. Benjamin Clark, has been recruited, 2) cross-training of staff in the School has resulted in more rapid response to student needs, 3) greater involvement of faculty in advising master's degree students, and 4) ongoing faculty involvement in advisement. Efforts to improve the support and advisement of students will continue. Currently, the School has one Academic Advisor (AA), which is inadequate to address needs of the School. Despite doubling enrollment in the upper-division nursing program several years ago, staff numbers have remained the same. The responsibilities of this AA along with faculty include advisement of all lower-division nursing majors, all upper-division nursing majors, and all TTU home-based RODP MSN students. In addition, the AA is responsible for tracking student progression; assisting with multiple reports generated for accreditation and approval of nursing programs; SOAR activities; VIP campus tours; and recruitment/marketing. The advisement burden is expected to increase due to: 1) increasing enrollment in all programs and tracks, lower-division, upper-division, RN to BSN, and RODP MSN, 2) the launch of an RODP DNP (Doctorate of Nursing Practice) anticipated to begin Fall 2013, 3) consideration to advising majors in General Health Studies who are concentrating on nursing, 4) need for better tracking of data, 5) anticipated increase in grant applications, 6) increase in number of required surveys to be completed, and 6) increase in scholarship recipients.

#### **Fast Track Option – In process**

- Many of the students enrolled in upper-division nursing as well as the RN to BSN track have completed required coursework that allows them to add electives to their schedules. Often, these students have a goal of continuing their nursing education through graduate work. In the upcoming year, the School will be proposing a fast-track option designed to enable upper-division nursing majors, including those in the RN to BSN track, to accumulate up to six credit hours of graduate coursework while still pursuing their undergraduate degree and to transition to the graduate program with anticipated accelerated completion.

#### **Marketing Programs – In process**

- The School is in the process of developing and implementing a marketing plan to recruit students into all of its programs but with a special emphasis on recruitment into the RN to BSN track and the master's degree program. Major recruitment will be in place in the upcoming academic year.

### **Online Certificate Programs, Credit and Non-Credit – In process**

- In response to community needs, faculty members are in the process of evaluating the need for specific certificate programs at a variety of levels. Interest from the community has been for programs that address preparation for certification as well as other credit and non-credit bearing programs. Currently, data are being collected that will allow the faculty to prioritize the type and order of certificate programs that should be developed and offered.

### **e. COLLABORATIVE EFFORTS**

Collaboration and “interprofessional” linkages are cornerstones of nursing education. Faculty members in the WH-SON work in partnerships and along with colleagues within the University, professional organizations and the community. The following are selected collaborative efforts with additional collaboration evident in faculty scholarship, innovative practices, and community service.

#### ***University Collaboration***

**Study Abroad – 2011:** Prof. Jenny Maffett, Assistant Professor of Nursing, TTU’s Study Abroad Program, and Colleagues from TTU

- Working with Tennessee Technological University’s (TTU’s) Study Abroad Program, Prof. Jenny Maffett, Assistant Professor of Nursing, traveled with nine students to Finland and Russia. The trip served as a cultural immersion trip for students who had not previously traveled internationally. The group explored differences in health care in relation to the six countries, using a problem-based learning approach. Prof. Maffett was a guest lecturer in the program. The group developed and co-authored a weblog, <http://blogs.tntech.edu/nursesabroad>, about their experiences and upon returning to the U.S., presented to community groups, including TTU students and faculty, the Lion’s Club, the WHSON alumni, and CRMC auxiliary.

**Study Abroad – 2012:** Dr. Melissa Geist, Assistant Professor of Nursing, Dr. Marketta Laurila, Chair, Department of Foreign Language, TTU’s Study Abroad Program.

- Drs. Geist and Laurila traveled with eleven (11) students to Argentina for a cultural immersion. Five of the students had never traveled outside of the country and three had never traveled outside of the Upper Cumberland Region.

#### **Leadership in SACS-COC 5<sup>th</sup> Year Reaffirmation Report**

- Geist, M., Chaired two sections assigned to gather data and construct reports for submission to SACS.

#### ***Community Collaboration***

#### **Development Council, Whitson-Hester School of Nursing.**

- Community involvement is crucial for the growth, development, and sustainability of the WHSON and its programs. Many of the initiatives that support the students, faculty, and programs of the School are the direct result of the support extended by the community. A collaborative relationship with the members of the WHSON Development Council is a key aspect of this support. Dean Pat Bagley, Dr. Sherry Gaines, Director of the WHSON, Mr. Jim Brock, Development Officer, Dr. Kim Hanna, alumnus and faculty member of the WHSON, as well as other alumni and community leaders work together to secure

support for student scholarships, faculty development, and programmatic needs. This year, the Development Council oversaw the allocation of eighty-five nursing scholarships totaling approximately \$94,000.

**Community Health Outreach – Service Learning** – Professors Ann Hellman, Barbara Jared, and Susan Reeves, Community Agencies

- Designed and developed Community Action and Participation Projects (C.A.P. Projects) for community health student experiences. The purpose of these projects is to: 1) encourage students to participate in addressing problems of specific groups within the community, and 2) foster student knowledge and activism by focusing on current health policy.

**Highlands Health Care Initiative** – Dr. Sherry Gaines, Director of the Whitson-Hester School of Nursing, staff from the Regional Health Department, staff from The Highland Initiative of Tennessee, and other Community leaders.

- Dr. Sherry Gaines serves as a member of the Highlands Health Care Committee, comprised of members from the Regional Health Department and other community leaders. The purpose of the committee is to address health care opportunities in the Upper Cumberland Region, identifying needs and solutions to improve the health of the Region's residents. This entity is closely aligned to the Highlands Workforce Development and Education Committee, whose members actively work on regional educational opportunities. The Highland Initiative of Tennessee oversees both committees.

**“Get Fit Highlands” Subcommittee, Highlands Health Care Initiative** – Prof. Shelia Hurley, Assistant Professor of Nursing, Dr. J. P. Barfield, Chairman, Department of Exercise Science, Physical Education, and Wellness, members of the Highland Health Care Initiative and other community leaders.

- The Highlands Health Care Committee established a subcommittee to plan and promote a challenge for residents of the Upper Cumberland Region to engage in fitness activities. Prof. Shelia Hurley and Dr. J. P. Barfield along with Dr. Sherry Gaines represent Tennessee Tech University in this collaborative endeavor. A challenge was initiated Fall 2011. Prof. Hurley and Dr. Barfield are conducting research to evaluate the outcomes of the challenge.

**“Jeans & Bling” Planning Committee – 2011-2012**

- Dr. Gaines, Ms. Donna Long, and Ms. Lisa Rice are members of a fundraising committee, working with members of the Hospice Fund Advisory Board and other community leaders to raise funds to benefit the WHSON and the Hospice Fund of the CRMC Foundation.



## **f. PROGRAMS AND PROJECTS**

### ***Co-Sponsorship of Community and Professional Conferences***

**Cookeville Regional Medical Center Foundation (CRMC) and Hospice Fund Hospice Education Seminar – 2011-2012** - Dr. Sherry Gaines, CRMC Foundation, Hospice Fund Board Members, Upper Cumberland Hospice Providers

- The CRMC Foundation Hospice Fund and the Whitson-Hester School of Nursing are collaborating to raise awareness and understanding about hospice care in general and hospice services in the Upper Cumberland Region. Dr. Sherry Gaines represents the WHSON, serving as a member of the planning committee at large and the Sub-Committee on Program Planning. The group held its first annual Hospice Education Seminar, “Hospice...It’s More than you Think” on October 21, 2011 in the Nursing and Health Services Building. Approximately 250 participants, including student nurses and faculty from the WHSON, attended the conference.

### ***Workshops/Presentations to Improve Nursing Practice***

- Dr. Melissa Geist designed and implemented a Critical Care Pharmacology course for Paramedics seeing Critical Care Transport Certification. The exam is 30% pharmacology content. Eighteen (18) Paramedics participated in the course; sixteen of the eighteen passed the certification examination on the first attempt. This certification is important for Paramedics in rural counties who must manage critically ill patients and possess the ability to manage and administer complex medication regimens. Without this certification, there would be a delay for the receipt of life-saving medications until clients reached emergency services in Cookeville or Nashville.
- Prof. Bedelia Russell, Dr. Melissa Geist, and Prof. Jenny Maffett analyzed the need for, developed and taught a series of staff development courses to assist Cookeville Regional Medical Center in preparing nurses to establish a pediatric unit.

### ***Education Consultation/Faculty Development***

- NCLEX-RN preparatory workshops for nursing students nationwide (M. Geist, J. J. Duvall, S. Hurley).
- Faculty development workshops for nursing faculty nationwide, including content on writing test items for NCLEX success, teaching approaches to improve clinical decision making, and curriculum analysis (M. Geist).
- Academic Coaching (J. J. Duvall)

## **g. HIGHLIGHTS OF KEY AREAS**

### ***Defining the Scholarly Mission of the School of Nursing***

- Ad hoc SoTL (Scholarship of Teaching and Learning) Committee, Co-Chaired by Professors Bedelia Russell and Ann Hellman was established to continue the work initiated at the Fall 2011 WHSON retreat. At the retreat, faculty members were lead by a team of Boyer SoTL Scholars from Western Carolina University in defining the scholarly mission of the School. At the retreat, faculty evaluated their scholarly endeavors to advance them to scholarship, using criteria based on the Boyer Model of Scholarship. The ad hoc committee was formed to support the scholarly mission based on SoTL.



## *New Appointments/Promotions*

### **Promotions**

- Geist, M.J., Promoted to Associate Professor with tenure.
- Hannah, K., Promoted to Associate Professor.

### **Appointments**

- After a successful search, led by Dr. Kimberly Hanna, Prof. Tammy Howard, and Prof. Susan Reeves, two faculty were appointed to tenure-track positions, replacing two non-tenure track positions.
- Beginning fall 2012, Prof. Barbara Jared assumed the role of coordinator for the RN to BSN track, advising and monitoring student progress, leading curriculum revisions, and participating in recruitment planning and implementation (3-hour course release).
- On June 4, 2012, Mr. Benjamin Clark assumed the position of Academic Advisor in the Whitson-Hester School of Nursing.

## Quality

### Progress toward goal of a primarily doctoral-prepared faculty.

- During 2011-2012, eight faculty members were actively engaged in doctoral programs and one faculty member has been accepted to begin a doctoral program Fall 2012. Professors Rachel Hall, Ann Hellman, Barbara Jared, and Bedelia Russell are pursuing a Ph.D. in Nursing at East Tennessee State University. Prof. Sue Piras is pursuing her Ph.D. at Vanderbilt University. Prof. Judy Duvall, who is pursuing a Doctor of Education at the University of Alabama – Tuscaloosa and Prof. Linda McQuiston, who is pursuing a Ph.D. at Nova Southeastern University, are ABD. Prof. Sharon Thompson, who was pursuing a Ph.D. at the University of Texas-Tyler and was ABD, died of pancreatic cancer Fall Semester 2012. The University of Texas-Tyler awarded her the Ph.D. prior to her death. Prof. Shelia Hurley has been accepted into the Ph.D. program at East Tennessee State University.

### NCLEX-RN Performance

Performance on the NCLEX-RN continues to be strong.

#### NCLEX-RN Pass Rates per Class

##### Program Outcome Data, Analysis of Graduation Rates, and Ongoing Program Improvement

Calendar Year	Number of Graduates taking the NCLEX-RN	Number of Graduates with Initial Success on NCLEX_RN	NCLEX-RN Pass Rates	Years Used to Calculate Yearly Pass Rate
Fall 2008 Class	21	20	95.24 %	F 08 and Sp 09= 2009 Pass Rate
Spring 2009 Class	43	42	97.67 %	
Fall 2009 Class	36	34	94.44 %	F 09 and Sp 10 = 2010 Pass Rate
Spring 2010 Class	44	39	88.64 %	
Fall 2010 Class	39	37	94.87 %	F 10 and Sp 11 = 2011 Pass Rate
Spring 2011 Class	49	47	95.92 %	
Fall 2011 Class	36	36	100%	F 11 and Sp 12 = 2012 Pass Rate
Spring 2012	38	TBD	TBD	

### RODP MSN Self-Study and NLNAC Accreditation Visit

Dr. Kim Hanna served as a member of the RODP MSN Self-Study Steering Committee. Dr. Sherry Gaines, as a member of the RODP MSN Executive Committee, participated with other members and Dr. Lois Wagner, Director of RODP MSN, in providing oversight for the self-study. The program received full accreditation.

In an effort to contribute to the quality of the program and to enhance recruitment of student to graduate study, the WHSON is improving its advisement and outreach to TTU home-based students. Additionally, the School has assisted in providing teaching for the RODP MSN courses. For the 2011-2012 academic year, TTU WHSON faculty taught 914 semester credit hours for RODP MSN. This teaching was done out-of-load due to insufficient faculty to teach

the courses in-load. It is anticipated that an even greater number of credit hours will be taught by TTU faculty this upcoming academic year.

### ***National/International Presence***

## **h. FACULTY RESEARCH AND SCHOLARLY ACTIVITIES**

### **Awarded Grants**

- Geist, M.J., & Reeves, S. (2012). *Simulation Club for Lower- and Upper-Division Nursing Students*. TTU Quality Enhancement Plan (QEP) Grants, Funded \$2,500.
- Hall, R. M. (2012). *Measuring Outcomes across the Curriculum*. Internal Research Grant Program, Tennessee Technological University, Funded, \$5,000.
- Hall, R. M. (2012). Tablet Computing Grant, TTU Internal Grant Program. Awarded iPad for AY 12-13.
- Hellman, A.N. (2012). *Capturing the Students' Stories: Student Perspectives of Community Action and Participation (C.A.P.) Projects*. Internal Research Grant Program, Tennessee Technological University, Funded, \$5,000.
- Jared, B. (2012). Tablet Computing Grant, TTU Internal Grant Program. Awarded iPad for AY 12-13.
- Russell, B. H. (2012). Tablet Computing Grant, TTU Internal Grant Program. Awarded iPad for AY 12-13.

### **Submitted Grants**

- Duvall, J.J. (2012). *Motivation and Technological Readiness in the Use of High Fidelity Simulation: A Descriptive Comparative Study of Nurse Educators*. Internal Research Grant Program, Tennessee Technological University, Not Funded.
- Gaines, S.K., Howard, T., & Piras, S. (Submitted 2011, Approved Not Funded – HRSA did not allow grants submitted in 2012 but instead reviewed the NWD approved grants per 2011 rankings). *Nursing Workforce Diversity: Reach and Educate to Change Health Care in Middle Tennessee (REACH)*. Nursing Workforce Diversity Program, Health Resources and Services Administration. Requested \$1,073,128 for three years. Not Funded.
- Jared, B. (2012). *Relationship Between Health Literacy and Health Behaviors*. Internal Research Grant Program, Tennessee Technological University, Not Funded.

### **Published Abstracts**

- Duvall, J. J., & Hall, R. (2012). *Bringing Simulation into the Classroom: An Interactive Experience*. Abstracts of the Human Patient Simulation Network Conference. . Tampa, FL.
- Duvall, J. J., & Hall, R. (2012). *Using Simulation as a Clinical Capstone Experience*. Abstracts of the Human Patient Simulation Network Conference. Tampa, FL.
- Geist, M. J. & Russell, B. H. (2011). Strategies to Engage Learners in Nursing Decision-Making and the Clinical Reasoning Process. Abstracts of the Sigma Theta Tau International' 22<sup>nd</sup> International Nursing Research Congress.
- Hanna, K. & McQuiston, L. (2011). *Peer Coaching between Graduating Seniors and Incoming Junior Nursing Students in the Clinical Setting*. Abstracts of the Joint

Convention of the Tennessee Nurses Association and the Tennessee Association for Student Nurses. Franklin, TN,

- Russell, B. H. (2012). *The Concept of Intellectual Curiosity: An Integrative Review*. Abstracts of the Western Institute of Nursing's 45<sup>th</sup> Annual Communicating Nursing Research Conference. Portland, OR. .
- Russell, B. H. (2012). *Intellectual Curiosity: A Principle-Based Concept Analysis*. Abstracts of the Western Institute of Nursing's 45<sup>th</sup> Annual Communicating Nursing Research Conference. . Portland, OR.
- Russell, B. H., & Hellman, A. N. (2012). *Scholarship Transformed: Boyer's Model in a Baccalaureate Nursing Program*. Abstracts of the 6<sup>th</sup> Annual International SoTL Commons Conference. Georgia Southern University, Statesboro, GA.

## Poster/Podium Presentations

- Duvall, J. J., Hall, R. (November 2011). *Bringing Simulation into the Classroom: An Interactive Experience*. Second Annual Tennessee Simulation Conference, Nashville, TN. Podium Presentation (Refereed).
- Duvall, J. J. *Factors Affecting the Adoption of High-Fidelity Simulation as a Teaching Strategy by Nurse Educators: A Review of the Literature*. 26<sup>th</sup> Annual Southern Nursing Research Conference. February 24<sup>th</sup>-25<sup>th</sup>, 2012, New Orleans, LA. Poster Presentation (Refereed).
- Duvall, J. J., & Hall, R. (2012). *Bringing Simulation into the Classroom: An Interactive Experience*. Human Patient Simulation Network Conference. February 27<sup>th</sup> – March 1, 2012, Tampa, FL. Podium Presentation (Refereed).
- Duvall, J. J., & Hall, R. (2012). *Using Simulation as a Clinical Capstone Experience*. Human Patient Simulation Network Conference. February 27<sup>th</sup> – March 1, 2012, Tampa, FL. Podium Presentation (Refereed).
- Duvall, J. J., Hall, R., Hellman, A.N., & Reeves, S. (2012). *“Rounding Up” the Pre-Nursing Majors*. International Nursing Association for Clinical Simulation and Learning. June, 2012, San Antonio. Poster Presentation Accepted (Refereed). Did not attend due to budget constraints.
- Geist, M. J. & Russell, B. H. (2011). *Strategies to Engage Learners in Nursing Decision-Making and the Clinical Reasoning Process*. Sigma Theta Tau International' 22<sup>nd</sup> International Nursing Research Congress. July 11<sup>th</sup>-14<sup>th</sup>, 2011, Cancun, Mexico. Podium Presentation (Refereed).
- Hanna, K. & McQuiston, L. (2011). *Peer Coaching between Graduating Seniors and Incoming Junior Nursing Students in the Clinical Setting*. Whitson-Hester School of Nursing Homecoming, November 5, 2011. Poster Presentation (Invited).
- Hanna, K. & McQuiston, L. (2011). *Peer Coaching between Graduating Seniors and Incoming Junior Nursing Students in the Clinical Setting*. Joint Convention of the Tennessee Nurses Association and the Tennessee Association for Student Nurses. Franklin, TN, October 14-16, 2011. Poster Presentation (Refereed).
- Hellman, A. N. (2012). *Capturing Nursing Students' Community Engagement and Interest: Implementing C.A.P. Projects Prior to Graduation*. 26<sup>th</sup> Annual Southern Nursing Research Conference. February 24<sup>th</sup>-25<sup>th</sup>, 2012, New Orleans, LA. Poster Presentation (Refereed).
- Russell, B. H., & Hellman, A. N. (2012). *Scholarship Transformed: Boyer's Model in a Baccalaureate Nursing Program*. 6<sup>th</sup> Annual International SoTL Commons Conference.

March 7<sup>th</sup>-9<sup>th</sup>, 2012, Georgia Southern University, Statesboro, GA. Podium Presentation (Refereed).

- Russell, B. H. (2012). *The Concept of Intellectual Curiosity: An Integrative Review*. Western Institute of Nursing's 45<sup>th</sup> Annual Communicating Nursing Research Conference. April 18<sup>th</sup>-21<sup>st</sup>, 2012, Portland, OR. Podium Presentation (Refereed).
- Russell, B. H. (2012). *Intellectual Curiosity: A Principle-Based Concept Analysis*. Western Institute of Nursing's 45<sup>th</sup> Annual Communicating Nursing Research Conference. April 18<sup>th</sup>-21<sup>st</sup>, 2012, Portland, OR. Poster Presentation (Refereed).

#### Articles in Refereed Journals

- Dahlstrom, M.F., & Piras, S.E. (2011). OTC meds: Know what your patient is taking. *Nursing Made Incredibly Easy!* 9(6), pp. 10-14. (Refereed).
- Geist, M. J., & Kahveci, K. (In Press). Engaging students in clinical reasoning when caring for older adults. *Nursing Education Perspectives*. (Refereed).
- Jared, B. (2012). Issues in Women's Health (Editorial). *Nursing Made Incredibly Easy!* 10(3), p 4.
- Piras, S.E., & Hurley, S. (2011) Ostomy care: Are you prepared? *Nursing Made Incredibly Easy!* 9 (5) pp. 46-48. (Refereed).
- Reeves, S., & Hellman, A.N. (2012). Women's health: Putting your nursing skills in the PINK. *Nursing Made Incredibly Easy!* 10(3), pp 20-25. (Refereed).

#### Review and Content Expert Activities

- Duvall, J. J. Member, American Association of Critical Care Nurses Continuing Education Review Panel.
- Gaines, S. K. Grant Reviewer, Human Resources and Services Administration (.
- Geist, M. J. American Nurses Credentialing Center (ANCC) Content Expert Panel for Pediatric Nurse Practitioner Certifying Exam.
- Hall, R. M. (2012). Consultant, Tennessee Board of Nursing.
- Hall, R. M. (2012). Grant Reviewer and Trainer, Upper Cumberland Affiliate of the Susan G. Komen Foundation.
- Jared, B. Invited Section Editor and Author of a weblog for a special issue on women's Health, *Nursing Made Incredibly Easy!* 10(3), pp 20-25.
- Piras, S.E. Reviewer, Huether's *Pathophysiology Online for Understanding Pathophysiology*. 5<sup>th</sup> Ed. Published by Elsevier.
- Russell, B. H. Content Reviewer, Huether's *Pathophysiology Online for Understanding Pathophysiology*. 5<sup>th</sup> Ed. Published by Elsevier.
- Russell, B. H., Consultant, Unit and Staff Development for new Pediatric Unit at CRMC.
- Russell, B. H. Group Facilitator, Western Carolina University Boyer Scholarship Retreat. February 2012. Invited to be a facilitator by the Boyer Scholars at the Western Carolina University.

## **i. BOOKS PUBLISHED/CHAPTERS/CONTRIBUTIONS**

## **j. INNOVATION RESULTING IN SAVINGS, EFFICIENCY AND/OR IMPROVED OUTCOMES**

### ***Advisement***

- Faculty at Large & Academic Advisor (Staff). Student advisement program for all Lower-Division Nursing Majors, Upper-Division Nursing Students, RN-BSN students, and RODP MSN students declaring TTU as their home school. More than 600 students are advised each semester. Faculty participation in advisement supplements the academic advisor staff position in the WH-SON. Without this advisement by faculty, the one academic advisor in the School would be unable to meet the advisement needs of students. Each faculty member advises 7-8 hours per semester in addition to individual advisement and serving as an NCLEX Advisor throughout the semester.
- Geist, M. & Hanna, K. NCLEX-RN Preparation Plan Review Team. Each student receives an individualized post-graduation NCLEX Enrichment Plan. Individual instruction is provided to assist students in progressing through the plan.
- Faculty at Large. NCLEX-RN Advisement Program. Students are assigned a faculty advisor to assist them in preparing for success on the NCLEX-RN.

### ***Course and Curriculum Initiatives***

- Geist, M., Jared, B., Piras, S., Reeves, S., & Russell, B. Designed and implemented fully online courses for the RN to BSN Program.
- Hall, R. M. Designed and developed simulations to “Bring into the Classroom” to effectively and efficiently use faculty and students’ time while teaching/learning with simulation. Design allows students to identify safety measures along with prioritization and management of disease processes.

## **k. FACULTY, STAFF AND STUDENT AWARDS**

### **i. Faculty & Staff Awards/Honors/Other Accomplishments**

#### ***Awards/Honors***

- Duvall, J.J., Geist, M., & Piras, S. Recipients of the College of Agricultural and Human Sciences Golden Cap Awards for accomplishments during 2010-2011.
- Geist, M. J., Recipient, 2012 Anne Floyd Koci Faculty Award for Excellence in Research.
- Hellman, A. N., Recipient, 2012 Anne Floyd Koci Faculty Award for Excellence in Service.
- Hellman, A. N., Selected to Attend and Awarded a Scholarship for the highly competitive Duke University Center of Spirituality, Theology, and Health Research Workshop, August 2011, Durham, NC
- Hall, R. M., Fellow (one of twelve statewide selected), Tennessee Nursing Simulation Education Alliance.
- Jared, B., Recipient, 2012 Anne Floyd Koci Faculty Award for Excellence in Teaching.
- Piras, S., & Maffett, J. Selected to attend and Awarded Scholarship for the November 2011 QSEN Conference, Charleston, SC.
- Russell, B. H., Nominated, 2012 Carol A. Lindeman Award for a New Researcher, Western Institute of Nursing Research.



ii. **Faculty/Student/Partners Awards/Honors/Other Accomplishments**

- Fifteen inductees, Fall 2011, Sigma Theta Tau International Nursing Honor Society, Iota Beta Chapter, twenty students (see Appendix B for a list of inductees).

iii. **Student Awards/Honors/Other Accomplishments**

- Chelsea Nye, Member, Board of Directors, National Student Nurses Association (Elected).
- Chelsea Nye, Inducted into Omicron Delta Kappa Honor Society
- Kristen Hailey, Breakthrough to Nursing/Legislative Director, Tennessee Association of Student Nurses (TASN). (Elected).
- Tara Villicana, Treasurer, Tennessee Association of Student Nurses (TASN). (Elected).
- TTU Whitson-Hester School of Nursing Student Nurses Association Officers
  - Chelsea Nye, President (Elected).
  - Hannah Rinks, 1<sup>st</sup> VP (Elected).
  - Angela Cavanaugh, 2<sup>nd</sup> VP (Elected).
  - Keisha Daniels, Secretary (Elected).
  - Kayla Finch, Treasurer (Elected).
- Dean's List, Fall 2011
  - Eighty-Six Upper-Division Nursing Students
  - Two hundred twenty-one Lower-Division Nursing Students
- Dean's List, Spring 2012
  - Eighty-Seven Upper-Division Nursing Students
  - One hundred forty-one Lower-Division Nursing Students
- Fall 2011 Whitson-Hester School of Nursing Senior Awards
  - Katy Bradfield, Recipient, Highest Academic Achievement Award
  - Vickie Brown, Recipient, Dr. Patricia A. Sommer Student Nurse Award
  - Kristi Cunningham, Outstanding Clinical Performance Award
  - Tabatha Chambers, Registered Nurses Professional Practice Award
  - Amanda Hargis & Tricia Loftis, Upper Cumberland District 9 Tennessee Nurses Association Award
  - Eric Hall, Student Leadership Award, TTU's Whitson-Hester School of Nursing Student Nurses Association
  - Amanda Hargis, Student Nurse of the Year, TTU's Whitson-Hester School of Nursing Student Nurses Association
- Spring 2011 Whitson-Hester School of Nursing Senior Awards
  - Jade Thrasher, Recipient, Highest Academic Achievement Award
  - Chelsea Nye, Recipient, Dr. Patricia A. Sommer Student Nurse Award
  - Ashley Knoerr & Ben Stringer, Upper Cumberland District 9 Tennessee Nurses Association Award
  - Angel Cavanaugh, Upper Cumberland District 9 Tennessee Nurses Association Award
  - Chelsea Nye, Student Leadership Award, TTU's Whitson-Hester School of Nursing Student Nurses Association
  - Angel Cavanaugh, Student Nurse of the Year, TTU's Whitson-Hester School of Nursing Student Nurses Association
  - Hannah Rinks, Student Nurse Membership Award, TTU's Whitson-Hester School of Nursing Student Nurses Association

- Graduates – See Appendix C for a List of Graduates
- Scholarship Awards, Spring 2011 (see Appendix D for list of awards)

## I. COMMUNITY SERVICE ACTIVITIES

### *External to the University*

- Duvall, J. J. Ambassador, American Association of Critical Care Nurses Ambassador.
- Duvall, J. J. Ambassador, National League for Nursing Ambassador.
- Green, S. Member, Paramedic Advisory Board and Paramedic Program Admission Board.
- Green, S. Doctoral Committee Member, Nova Southeastern University student.
- Hall, R. M. Member, Ad hoc Committee on Early Childhood Licensure Pre-K for TDOE
- Hall, R. M. Member/Volunteer, Medical Reserve Corp
- Hellman, A. N. Member/Volunteer, Medical Reserve Corp
- Hellman, A. N. Guest Host, TTU Medical Explorers Program, January 2012
- Howard, T. Member, Putnam County Walk Committee, March of Dimes
- Howard, T. Member/Volunteer, Medical Reserve Corp.
- Jared, B. Member (14 years), Chair (12 years), White County Board of Education.
- Jared, B. Counselor/Leader, July 2010 Youth Ministry trip to Atlanta, GA.
- Maffett, J. H. Board Member, TTU's International Community Hospitality Association.
- Reeves, S. Breast Health Presentation, St. Michael's Church Women's Group, October 2011.
- Reeves, S. Health Explorer Program, January 2012.
- Russell, B.H. Faculty in the CRMC Pediatric Series for Registered Nurses. Content presented included, *Pediatric Assessment*, *Pediatric General Respiratory Illnesses*, *Pediatric Pain Assessment*, and *Pediatric Neurological Issues*.



## APPENDICES

Appendix A: 2011-2012 Faculty/Staff, Whitson-Hester School of Nursing .....	34-35
Appendix B: Sigma Theta Tau International Nursing Honor Society .....	36
Appendix C: Graduate, TTU WHSON 2011-2012 .....	37
Appendix D: Scholarship Awarded, WHSON, Spring 2012 .....	38-39
Appendix E: WHSON Development Council, Board of Trustees .....	40

Appendix A: Faculty and Staff Profile 2011-2012 Academic Year (July 1, 2011 – June 30, 2012)

Name	Credentials	Other	Rank/Title/Tenure Status
Judy J. Duvall	BSN, MSN, RN, CCRN	Doctoral Student – University of Alabama, Tuscaloosa	Assistant Professor – Tenure Track
Sherry K. Gaines	BSN, MN, PhD., RN		Professor & Director
Melissa J. Geist	B.S. (Chemistry/Physics), BSN, M.Ed. (Science), MSN, Ed.D., RN, FNP/PNP-BC		Associate Professor – Tenure Track/Assistant Dean
Sheila Green	BSN, MSN, Ph.D., RN, APRN-BC		Professor - Tenured
Rachel Hall	MSN, RN, WHNP-BC, CCRN	Doctoral Student – East Tennessee State University	Assistant Professor – Tenure Track
Kimberly J. Hanna	MSN, Ph.D., RN, CNL		Associate Professor – Tenure Track
Ann N. Hellman	BSN, MSN, RN	Doctoral Student – East Tennessee State University	Assistant Professor - Tenure Track
Tammy W. Howard	BSN, MSN, RN, WHNP-BC, RNC-OB		Assistant Professor – Tenured
Shelia Hurley	BSN, MSN, MBA HC, RN		Assistant Professor – Non-Tenure Track
Barbara E. Jared	BSN, MSN, RN, WHNP-BC	Doctoral Student – East Tennessee State University	Assistant Professor - Tenured
Emily Lee**	BSN, MSN, RN, FNP - BC		Assistant Professor – Non-Tenure Track
Jenny H. Maffett	BSN, MSN, RN, FNP - BC		Assistant Professor – Non-Tenure Track
Linda S. McQuiston	BSN, MSN, RN	Doctoral Student – Nova Southeastern University	Assistant Professor – Tenure Track
Susan Piras	BSN, MSN, RN	Accepted for Doctoral Study, Vanderbilt University School of Nursing (to begin Fall 2011)	Assistant Professor – Non-Tenure Track

Appendix A: Faculty and Staff Profile 2011-2012 Academic Year (July 1, 2011 – June 30, 2012), continued

Susan Reeves	BSW, BSN, MSN, RN, WHNP-BC		Assistant Professor - Tenured
Bedelia H. Russell	BSN, MSN, RN, CNOR, CPNP-PC, CNE	Doctoral Student – East Tennessee State University	Assistant Professor - Tenured
Sharon Thompson*	BSN, MSN, RNC-ACN, RNC-MSN	Doctoral Student – University of Texas - Tyler	Assistant Professor – Tenure Track

\* Died of pancreatic cancer during Fall Semester 2011

\*\* Hired Spring 2012 to fill vacancy left by Prof. Thompson

Staff for 2011-2012 Academic Year (July 1, 2011 – June 30, 2012)

Kristi Burris, Academic Advisor until March 26, 2012

Benjamin Clark, Academic Advisor, June 4, 2012 to Present

Donna Long, Administrative Associate III

Carla Goolsby, Administrative Associate II

Glossary: Credentials/Certifications

APN:	Advanced Practice Nurse
APRN:	Advanced Practice Registered Nurse
BS:	Bachelor of Science
BSN:	Bachelor of Science in Nursing
BSW:	Bachelor of Social Work
CCRN:	Critical Care Registered Nurse
CNE:	Certified Nurse Educator
CNL:	Clinical Nurse Leader
CNOR:	Certified Nurse – Operating Room
CPNP-PC:	Certified Pediatric Nurse Practitioner-Primary Care
Ed.D.	Doctor of Education
FNP-BC:	Family Nurse Practitioner – Board Certified
M.Ed.:	Master of Education
MN:	Masters in Nursing
MSN:	Master of Science in Nursing
MSN-C:	Medical-Surgical Nursing - Certified
MBA HC:	Master's in Business Administration – Health Care
Ph.D.:	Doctor of Philosophy
PNP:	Pediatric Nurse Practitioner
RN:	Registered Nurse
RNC-ACN:	Registered Nurse Certified -Ambulatory Care Nursing
RNC-MSN:	Registered Nurse Certified – Medical/Surgical Nursing
RNC-OB:	Registered Nurse Certified – Obstetrical Nursing
WHNP-BC	Women's Health Nurse Practitioner – Board Certified

Appendix B: 2011-2012 Academic Year Inductees, Iota Beta Chapter, Sigma Theta Tau International Nursing Honor Society

2011-2012 Inductees, Iota Beta Chapter, Sigma Theta Tau International Nursing Honor Society	
Fall 2011	Spring 2011
Kaila Beasley Katy Bradfield Anna Clegg Kristi Cunningham Jason Flowers William Tyler Flowers Rachel Hall Maygan Hickey Amanda Lankford Megan Lessard Tricia Loftis Toni McCallum Dreama Phillips Hilary Pritchett Jill Sullivan Allison Worley	No inductees for Spring. Those selected will be inducted in Fall Semester 2012

Appendix C: 2011-2012 Graduates, Whitson-Hester School of Nursing

Receiving a Baccalaureate in Science in Nursing			
Fall 2011 Class		Spring 2012 Class	
Kaila Beasley** Katy Bradfield** Vickie Brown Kandy Cantrell Tabatha Chambers Anna Clegg** Crystal Maxwell Cox* Melanie Culp Kristi Cunningham** Miah Kirby Elmore Jason Flowers* Tyler Flowers* Eric Hall Amanda Hargis Meghan Herren Dakota Hickey** Lorena Hixson* Brittany Hollows*	Brittany Houston Megan Hulan Megen Jones Lessard* Alicia Kelley Amanda Lankford** Tricia Loftis* Kendra Maynard Brooke McCallum* Dreama Phillips* Hiliary Pritchett* Cristal Salisbury Christie Shope Jason Staggs Allison Stewart* Jill Sullivan** Danielle Turner* Hatley Worley**	Marco Belitz Jarod Bell Jo Beth Bice* Kayla Bowling* Caity Brewer Thomas Burks* Angel Cavanaugh** Stephanie Climer Erin Cutlip Katherine Davis Amber Garmon Tiffany Hall* Becca Kessie Ashley Knoer** Heather Lalone Lisa Lamas Ashley Lameda Joslyn Lorenzo Jamie Maxfield*	Savannah McConnell* Tess Momberger* Corey Montgomery Hilary Myers Chelsea Nye* Samantha Potter Rebecca Price Megan Ramsey* Hannah Rinks* Heather Simonis Ashleigh Snow Heather Stafford Jessica Steele Ben Stringer* Jade Thrasher** Katy Van Dervort* Jessica Waters Robin Williams Ashley Young

\* Cum laude – 3.5-3.69 GPA

\*\* Magna cum laude – 3.7-3.89 GPA

\*\*\* Summa cum laude – 3.9-4.0 GPA

Fall 2011 Senior Class Officers

Dakota Hickey, President  
Meghan Herren, Vice President  
Vickie Brown, Secretary  
Lorena Hixson, Treasurer

Spring 2012 Senior Class Officers

Jamie Maxfield, President  
Jade Thrasher, Vice President  
Becca Kessie, Secretary  
Kayla Bowling, Treasurer

Appendix D: Scholarships Awarded, WHSON, Spring 2012

Nursing Scholarships Awarded, WHSON, Spring 2012	
<b>Jean DeBords Jeffers</b> Kayla Bowling Kayla Finch <b>Gladys Stringfield Owens</b> Leslie Gordon Allison Lynch Jennifer O'Dell Melissa Norrod <b>The White County Breast Cancer-Survivor Nursing Scholarship</b> Hayley Anderson <b>Tommy Burks Memorial Scholarship</b> Rebecca Story <b>Captain William Lafayette Anderson Scholarship Endowment</b> Amanda Dunham Jessica Painter Bethany Patch Megan Caldwell Abigail Brown <b>Nursing Development Council</b> Alyssa Forcier <b>Carole-Jean Adkisson</b> Keshia Daniels <b>Allen Endowed Nursing</b> Katie Northcutt Randall Reagan Amanda Dunham <b>Richard H. &amp; Isable Creager, Sr.</b> Anna Barnard Bethany Patch Eva Hyme Stephanie Allen <b>Fran Rothschild</b> Bridgett Hailey	<b>Dr. J. T. Moore Scholarship</b> Haley Stewart <b>Charlotte M. Sublett</b> Haley Stewart <b>Betty Ragle Endowment</b> Dakota Stone Adrian West <b>Nancy Fry Endowment</b> Jessica Painter Abigail Brown Megan Caldwell Carrie Johnson Jessica Abbott <b>Hamilton Endowment</b> Kayla Bowling <b>Gloria Essler</b> Amanda Foster <b>W. Clyde &amp; Marie Hyder</b> Katelyn Jones Joy Clapp Melissa Norrod <b>Willie Rush Jewell</b> Taylor Dukes <b>Whitlow-Crawford</b> Nichole Taylor Christopher Delk Haley Wennerstrom <b>McSpadden/McNew</b> Ashley Cole <b>Earl R. Nash Memorial Scholarship</b> Ashley Cole <b>Don S. and Sarah P. Award</b> Stacie Crawford

Appendix D: Scholarships Awarded, WH-SON, Spring 2012, Continued

<b>The Anna Scott Brown</b> Lindsay Blair <b>Dr. Barbara Reynolds</b> Kendra Carey <b>Lorraine Peters Endowment</b> Abbie Martin <b>CRMC Auxiliary Endowment</b> Tara Villicana <b>CRMC Auxiliary Nursing Scholarship</b> Kesha Staley <b>Dr. Sharon S. Thompson Courage Award</b> Amanda Foster <b>Lawrence W. Hester &amp; Jean Whitson Hester Memorial Award</b> Kristi Lineberry Kristi Day Mitna Ngo Emily Durham Amanda Dunham <b>Rotary Club of Cookeville Scholarship</b> Stacie Crawford	<b>Theodore R. &amp; Bonnie R. Deur</b> Brittany Clenden Emily Easterling Andrea Glover Abbie Martin Alison Mason Jason McClurkan Kelsey McCully Mara McDonald Hailey Mitchell Alicia Pertuset Lauren Prater Sara Roberts Brittany Schroader Cara Shivers Krystal Smith Kesha Staley Tara Villicana Ashley Wisekal David Wix Lea Wright Virginia Strother Ashley Grayson Bethany Krisle Lauren Stiles Brandy Cates Laura Hatmaker Megan McAfee Chelsea Strock Jacinda Smith Ashley Sanders Heather Sullivan Sarah Goodin Kristen Cuccia Taren Wilkfong Elizabeth Wilmore
--	---

## Appendix E: Whitson-Hester School of Nursing Development Council Board of Trustees

Ms. Diane Bennett, President

Ms. Kris Faier, President Elect

Mr. Michael Duke, Vice President

Ms. Karen Lynn, Secretary

Mr. Christopher Holloway, Past President

Mr. Vic Gernt, Treasurer, Ex-Officio

Ms. Connie Bellamy.

Mr. Buddy Chaffin

Ms. Jean Davis

Dr. Thomas Lawrence

Ms. Karen Lynn

Ms. Judy Mabrey

Ms. Donna J. McSpadden, FACMPE

Dr. Barbara Reynolds

Ms. Penny Scardina,

Ms. Virginia Selby

Ms. Harriet Westmoreland

Ms. Suzanne Worrell

Dr. Kimberly Hanna, Faculty Representative

Dr. C. Pat Bagley, Dean, Ex-Officio

Dr. Sherry K. Gaines, Director, Ex-Officio

Mr. Mark Hutchins, Vice President, Advancement Ex-Officio

Mr. Jim Brock, Director of Development



**TENNESSEE TECH UNIVERSITY**  
***Oakley Sustainable Agricultural Center***  
**ANNUAL REPORT 2011-2012**

**Grants and Contracts:**

P.I. on **\$1,800,000** project with TDEC, NRCS, and TDOT to provide stream bank stabilization, develop wildlife habitats and food plots, and create innovative watering systems for livestock (funded; nearing completion)

Co-author of STEM Hub and Platform Grant to Tech, **\$1,5000,000** for the two projects; others on the project include: Becky Magura, Christina Hatley, Craig Rigell, George Chitiyo, Ismail Fidan, JP Barfield, Jane Baker, Jerry Boyd, Jill DeBord, Joe Rencis, Josh Francois, Kathleen Airhart, Ken Currie, Ken Hunter, Maggie Phelps, Melissa Geist, Sally Pardue, Sandra Koczwar, Sharon Anderson, Shirley Myers, Susan Gore, Terry Lashley, Wayne Stevenson, and Yvette Clark.

P.I. on **\$35,000** project with Cooperative Research Foundation (CRF) on Selenium supplements for cattle (completed, final report submitted)

P.E.T. Care Campus Planning Committee; raised **\$230,000** to purchase property, which has been bought, plus **\$1,400,000** from City of Cookeville to fund/ construct facility.

Chairman of Leadership Putnam committee which developed an “equestrian facility” project for Hyder-Burks Pavilion, and received commitments of **\$400,000** from the City of Cookeville and Putnam Co for construction purposes (\$200,000 each). Awaiting \$600,000 of final funding from the State of Tennessee.

Working with a consortium including Tennessee Department of Agriculture to conduct a feasibility study for the construction of a **\$3,000,000** beef and pork processing facility.

Working with a consortium developing a process to open up 29,000 ac in Jackson and Smith Co to cropland development. Working with the offices of U.S. Senators Bob Corker & Lamar Alexander, U.S. Rep Diane Black, along with local county governments, NRCS, TDEC and TWRA in a project that could have an annual economic impact of **\$20,000,000**.

**Special events:**

Hosted U.S. Representative Diane Black at her first session after her election to U.S. Congress to discuss “rural healthcare” including representatives from Whitson-Hester School of Nursing, Cookeville Regional Medical Center, Cookeville Chamber of Commerce, and TN Health Department

Serve U.S. Congressman Diane Black as advisor on agricultural issues

Serve U.S. Congressman Diane Black as advisor on the environment  
Co-hosted, along with Rep. Ryan Williams, Governor Bill Haslam in Cookeville for a  
“State Budget Initiatives” announcement

### **Publications:**

#### **Books Published:**

Tennessee Beef and Forage Handbook, 2012, **C.P. Bagley**, R.R. Evans and Tori Cass  
(editorial assistant), published by TN FFA Foundation

This same material is also being published as a CD, and as an “app” which will be  
available via iPad, Droid, or Smart Phone.

#### **Refereed Publications**

**C.P. Bagley**, A. Martell-Cheatham and J.H. Bouton. 2011. Quality characteristics of switchgrass  
as influenced by forage treatments. Proc. Amer. Forage & Grassl. Council. 20:138

#### **Other Publications**

ElSawy, A., G. Graham, M. Baswell and C.P. Bagley. 2011. Proc. Automation of a biodiesel  
processor from waste vegetable oil using programmable logic controller. Biodiesel Int.  
Conf. Cairo, Egypt, Aug, 2012

Ennis, T. and C.P. Bagley. 2012. TTU Rotaract Students travel to Dominican Republic for  
Service in Local Schools and Orphanages. Int. Horizons Conf. NY, NY. October, 2012

### **Service:**

#### **Professional:**

Secretary- Treasurer, TN Soil Water Conservation Society

Member, Soil Water Conservation Society

Member, American Forage and Grasslands Council

Past- President

Southern Pasture and Forage Crop Improvement Committee

Past-President

American Society of Animal Science

Board of Directors, Hull-York Consortium

Board of Directors, Friends of the Library

Board of Directors, Ag 20/20 Leadership program

Hosted and speaker for 2<sup>nd</sup> Regional Conservation agent “Boot Camp”

Live Green Tennessee Board of Directors

TN Plant Materials Advisory Committee, Natural Resource Conservation Service

TN Cattlemens Association member

Putnam Co Cattlemens Association member

TN Farm Bureau Federation, member

Putnam Co Farm Bureau, member

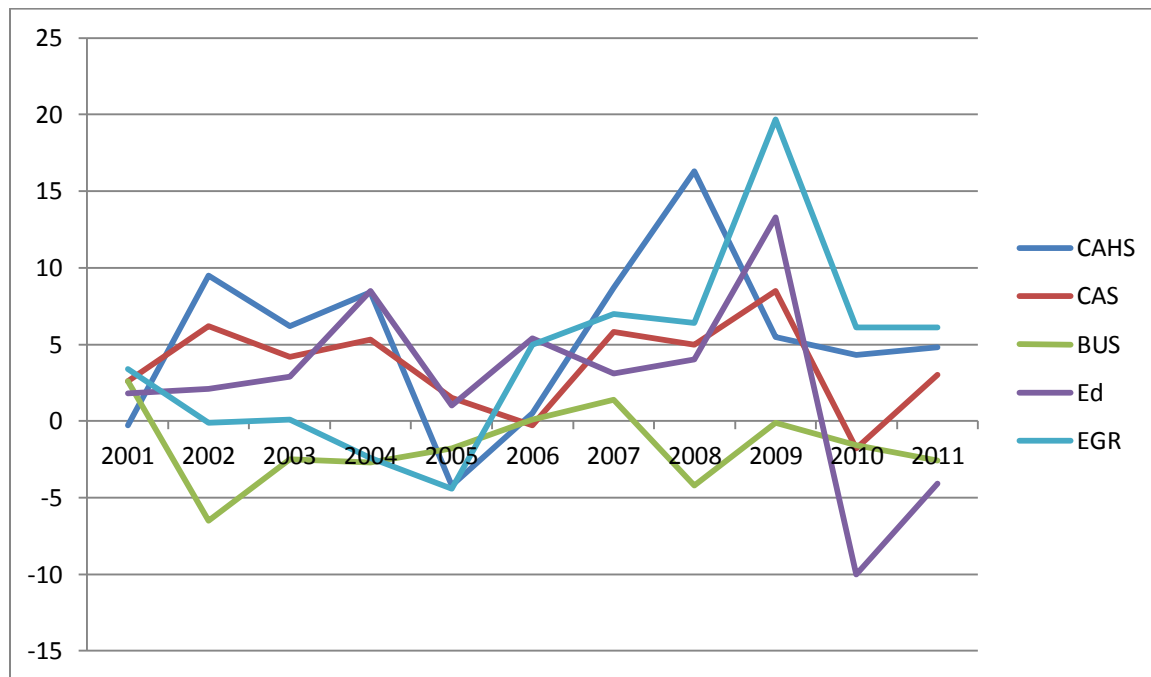
TTU Early Alert Student Academic Warning System

Board of Directors, Nursing Foundation  
 Nursing Foundation, Executive Committee  
 TTU Ag Foundation Board of Directors  
 TTU Ag Foundation Executive Committee  
 University Strategic Planning Committee  
 Graduate School Executive Committee  
 Hull-York Lakeland RC&D “Environthon” Committee  
 Outstanding Faculty Award Committee Chairman, 2012  
 Nominator of Chelsea Rose for the “Derryberry Student of the Year” Award (selected)  
 Nominator of Chelsea Rose for the “Harold Love Service” Award (selected)  
 Nominator of Dr. Theresa Ennis for TTU Service-Learning Award (selected)  
 Group Leader, Dominican Republic student Travel-Aboard trip  
     \$1,000 donation of support from Cookeville Rotary  
     \$1,000 donation from Cookeville Breakfast Rotary  
     “Give a sheet Project” where students gets sheets donated for orphanage in DR  
     In-kind by One-Hour Martinizing to launder sheets to orphans in DR  
     In-kind by Averitt Express to ship sheets to orphans in DR

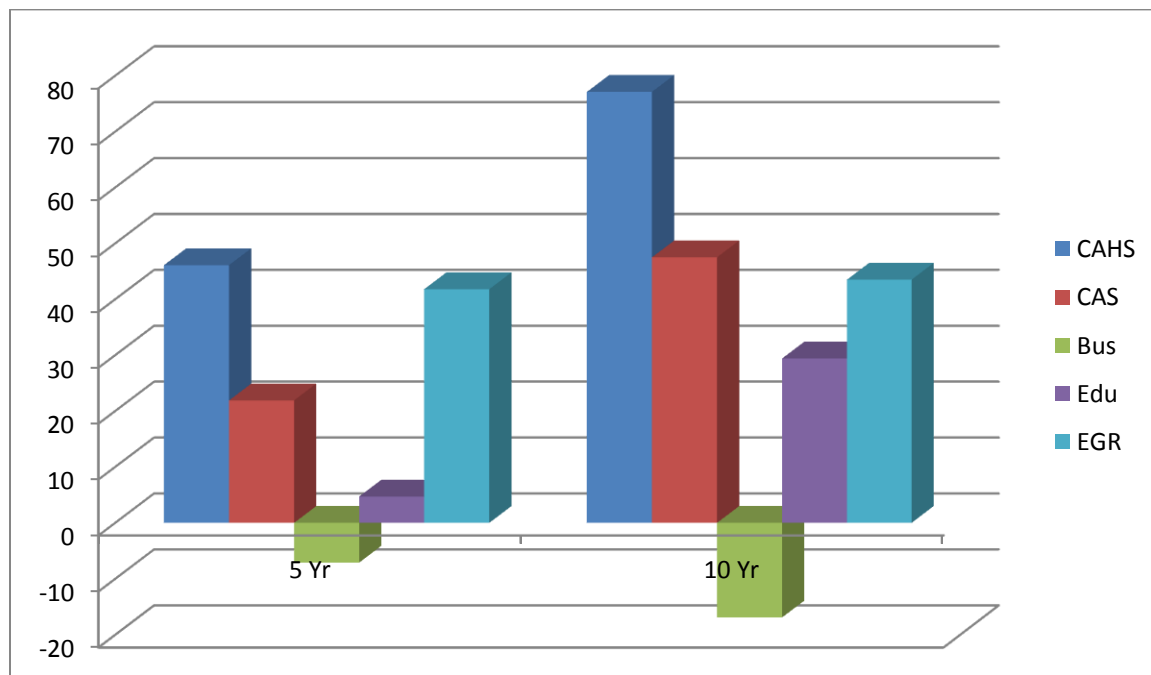
### Community

President, Cookeville Noon-Day Lions Club  
 President-elect, Cookeville Rotary Club  
     Board of Directors, Cookeville Rotary Club  
         **\$30,000** grant to support Bolivia Literacy Program thru Rotary International  
 P.E.T. Care Campus Planning Committee and University point-person, \$3 million  
 budget, and four community partners  
 Cookeville Tree Board  
     Vice-Chairman  
 Red Bud Festival Planning Committee, Cookeville  
 Healthcare Subcommittee, Economic Development Council, Highlands Initiative  
 Board of Directors, “Button Fund” Cookeville Regional Medical Center  
 First Methodist Church Trustees Committee  
 Leadership Putnam graduate, 2012

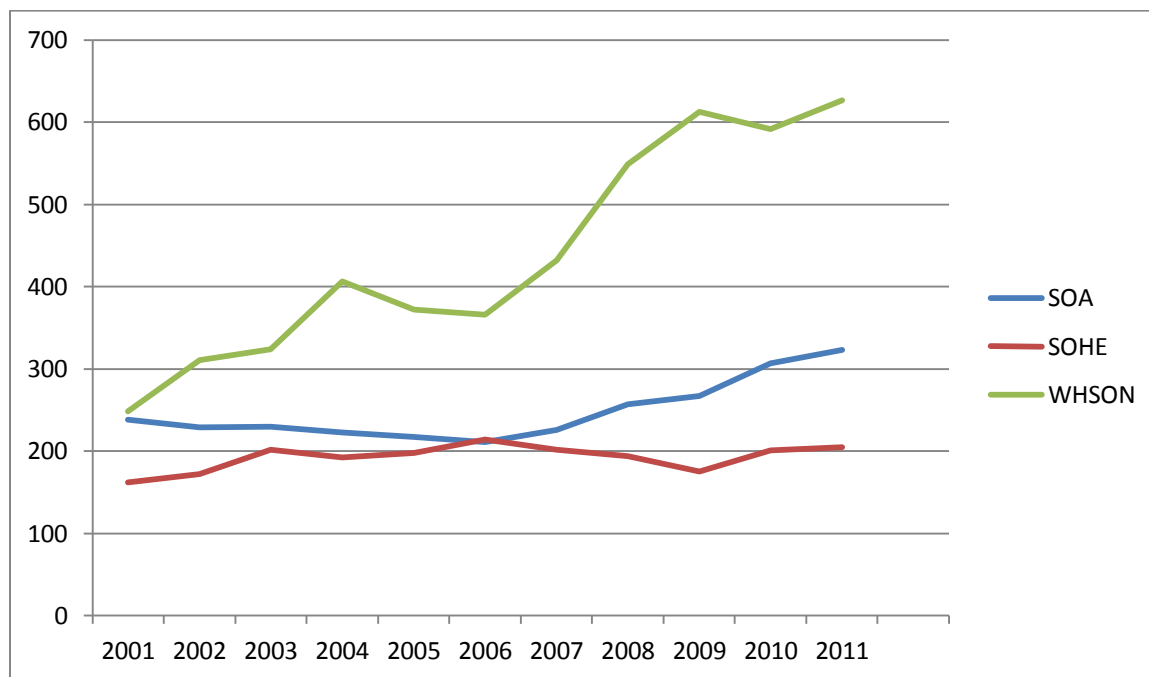
## Table 1. Percentage Growth, 10 Years



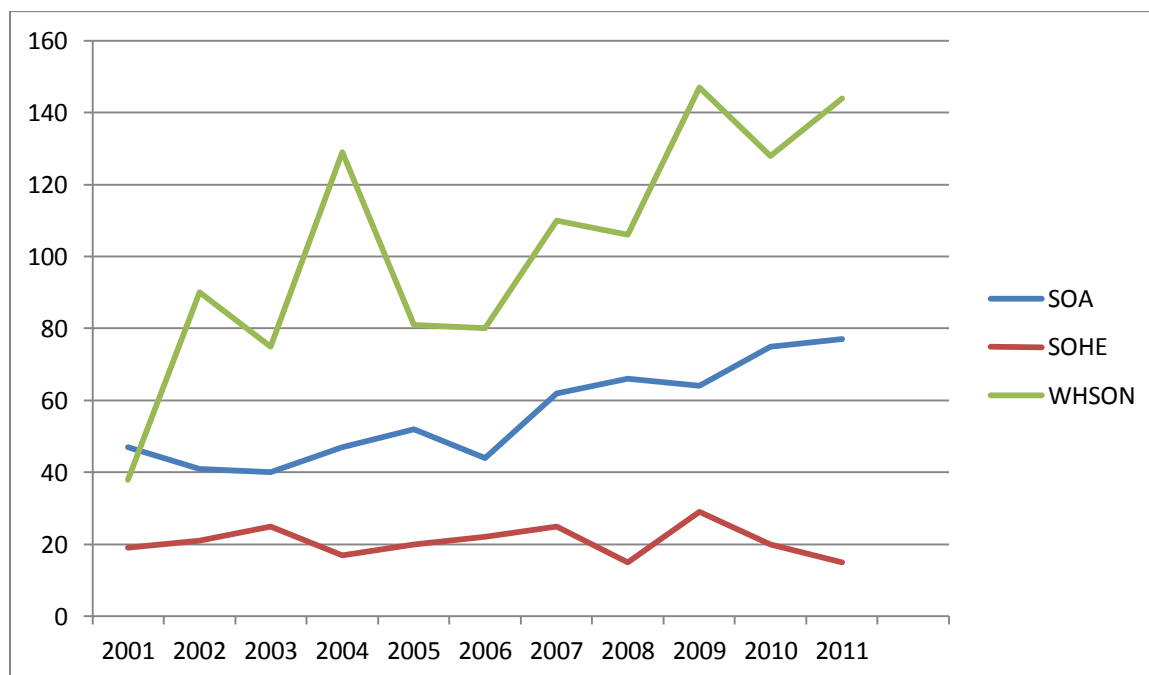
## Table 2. Percentage Growth, 5 & 10 Years



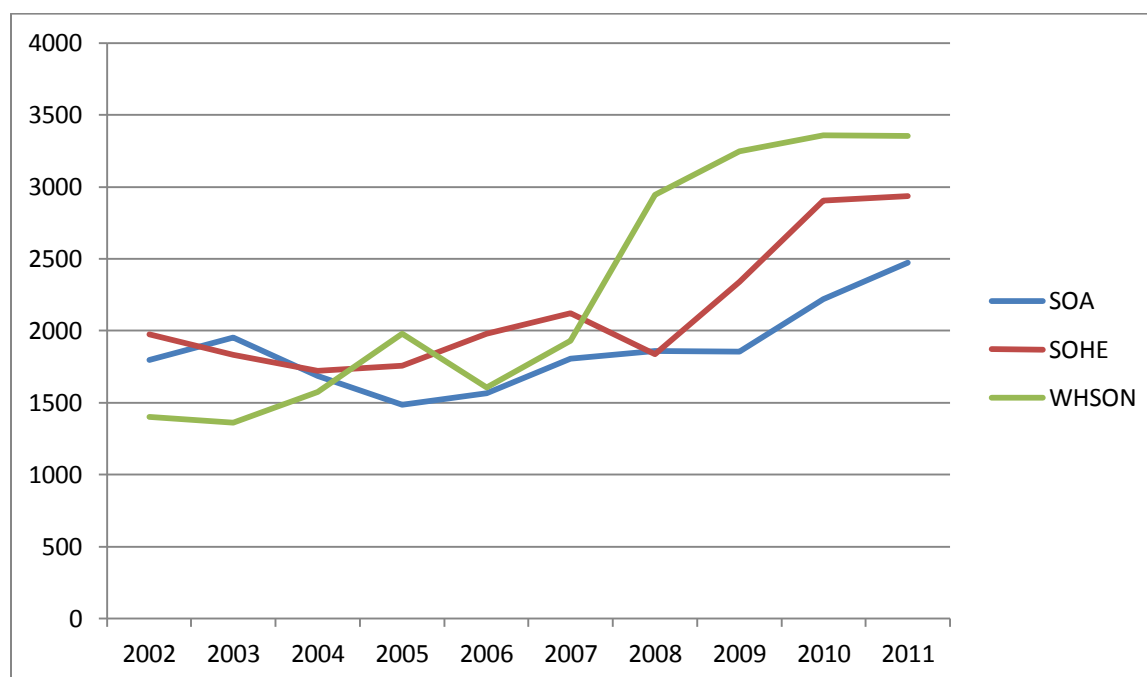
## Table 3. Enrollment, CAHS by Unit



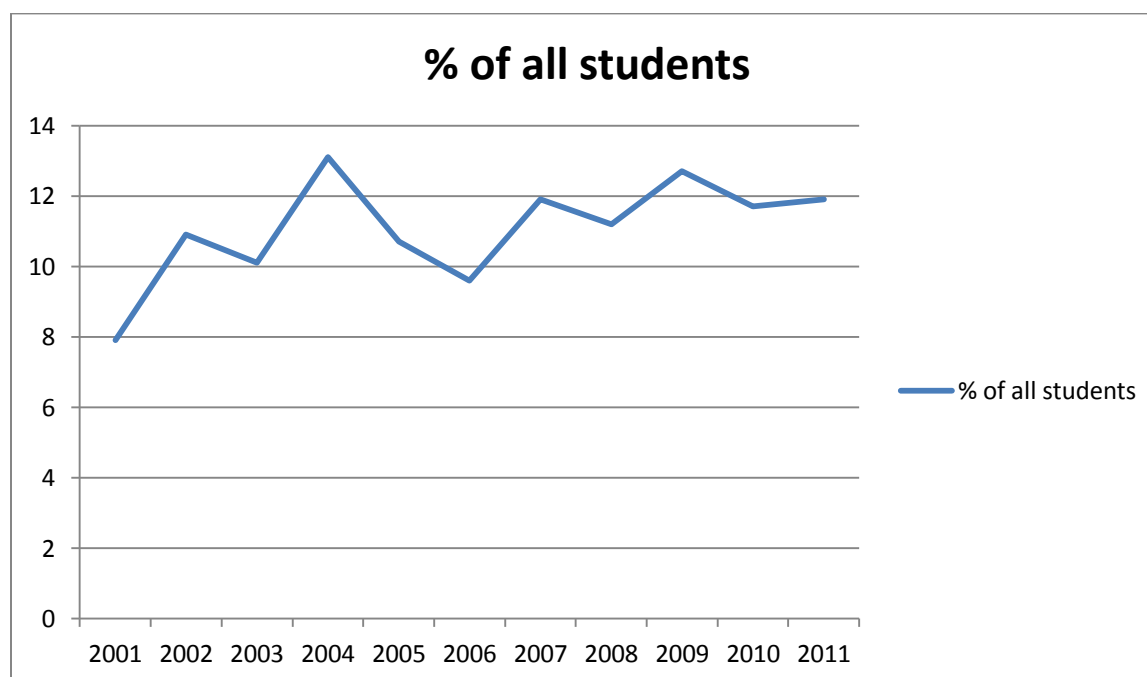
## Table 4. Enrollment, First-Time Freshmen



## Table 5. SCH Generation by Unit

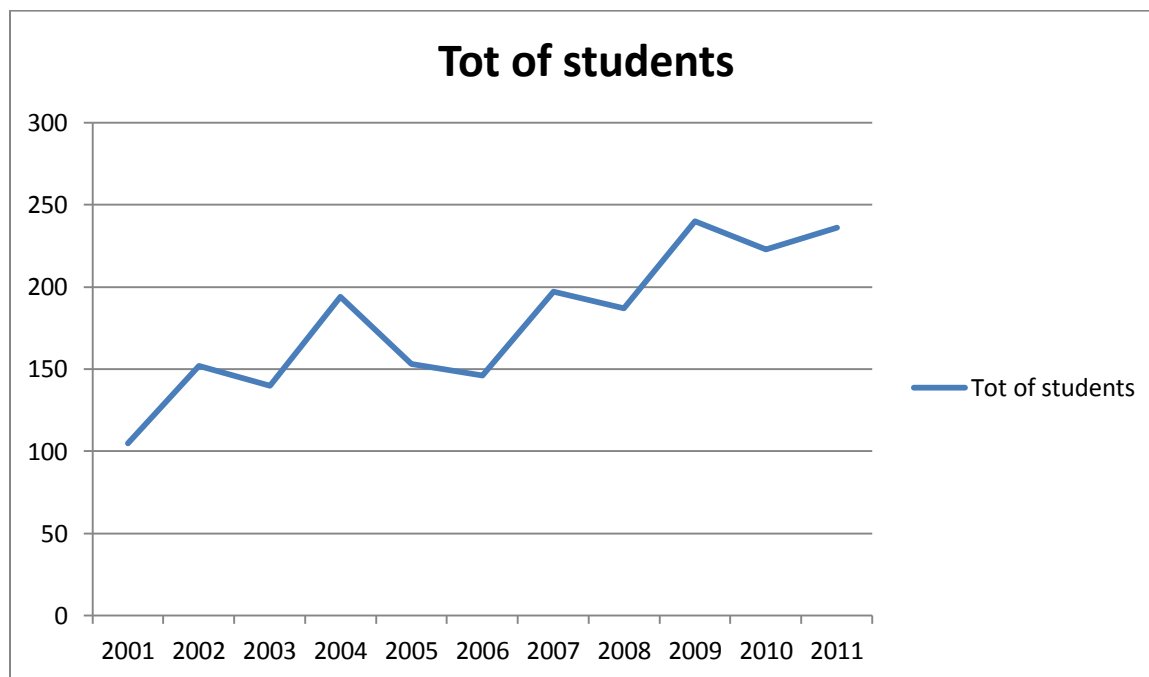


## Table 6. % of New Freshmen in CAHS



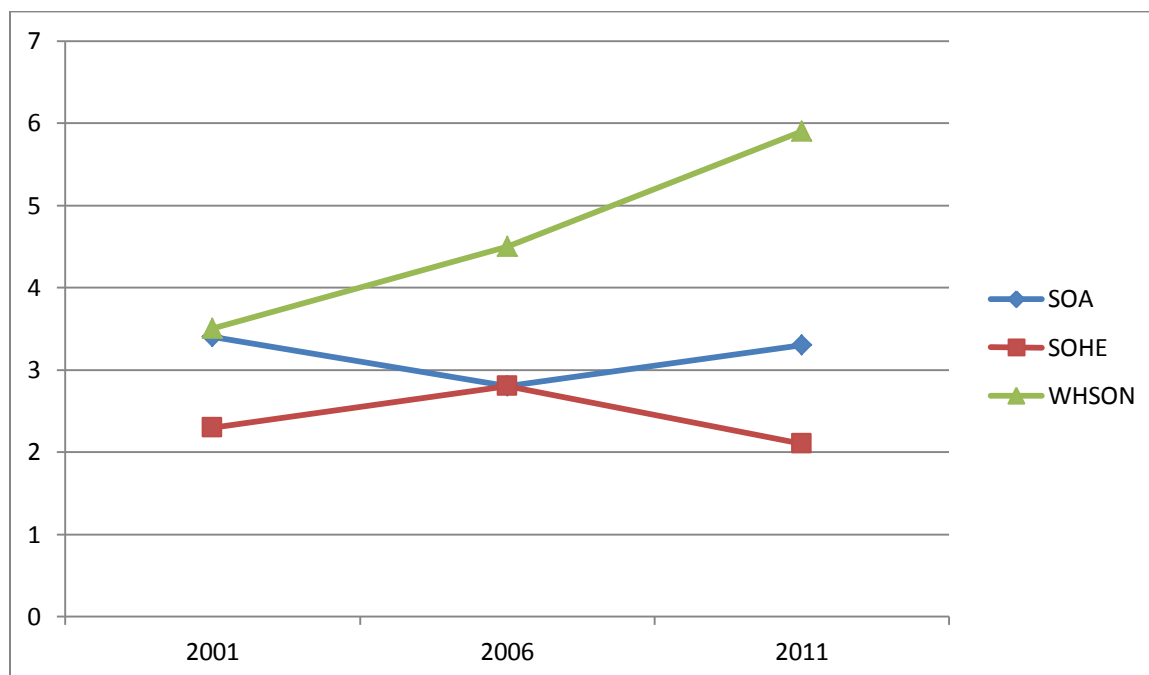
## Table 7. Freshmen Entering CAHS

---

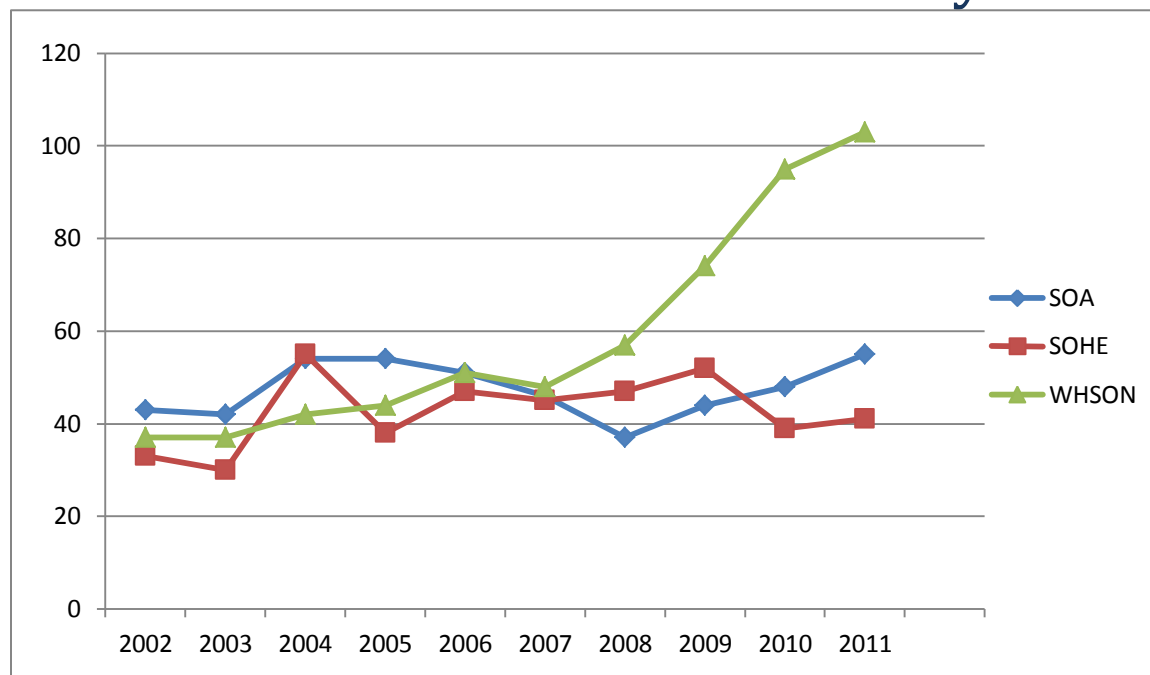


## Table 8. Unit Percentage of Student Pop.

---



## Table 9. Number of Graduates by Year



## Table 10. MSN RODP Students/Graduates

