



APPENDIX E
LANDSCAPE GUIDELINES

DESIGN GUIDELINES

LANDSCAPE GUIDELINES:

Tennessee Tech University planting guidelines are informed by a comprehensive tree inventory, detailed comparison analysis, and strategic planting targets designed to sustain and enhance the campus's outdoor arboretum spaces. These guidelines prioritize biodiversity, ecological resilience, and aesthetic value, ensuring that new plantings replenish existing green spaces while maintaining harmony with the campus landscape.

By curating selections that provide visual and ecological interest throughout all four seasons—spring blossoms, summer foliage, autumn color, and winter structure—we aim to create a dynamic and engaging environment for students, faculty, and visitors. This approach reflects our commitment to long-term sustainability, educational enrichment, and the preservation of our campus as a living arboretum.



DESIGN GUIDELINES

TREE INVENTORY - TTU Existing Inventory



DESIGN GUIDELINES

TREE INVENTORY - Tree Size

- TREE - LARGE (<25' HEIGHT)
- TREE - MEDIUM (15'-25' HEIGHT)
- TREE - SMALL (>15' HEIGHT)



DESIGN GUIDELINES

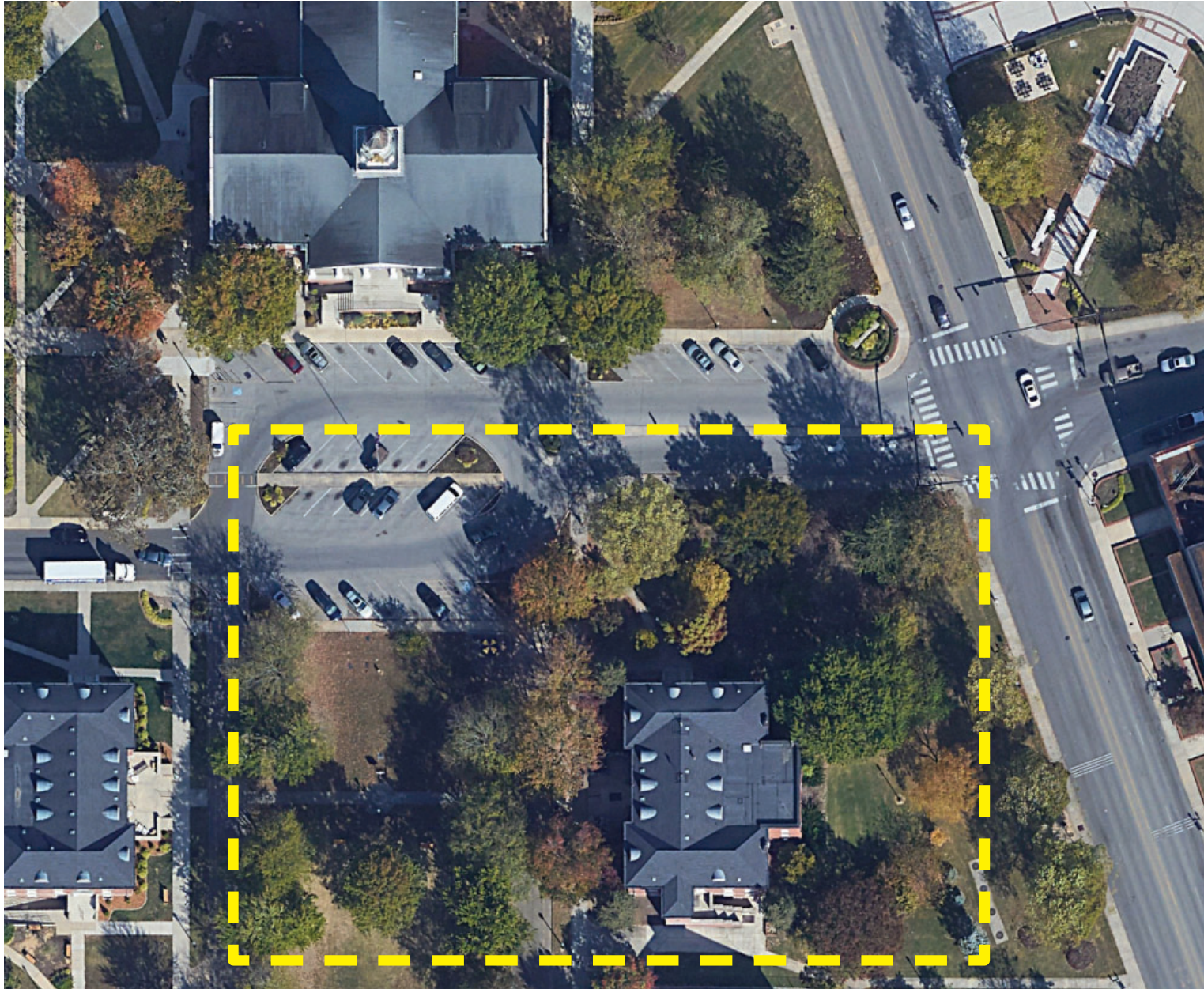
TREE INVENTORY - Evergreen / Deciduous

- DECIDUOUS - PROPOSED LOCATIONS
- EVERGREEN - PROPOSED LOCATIONS

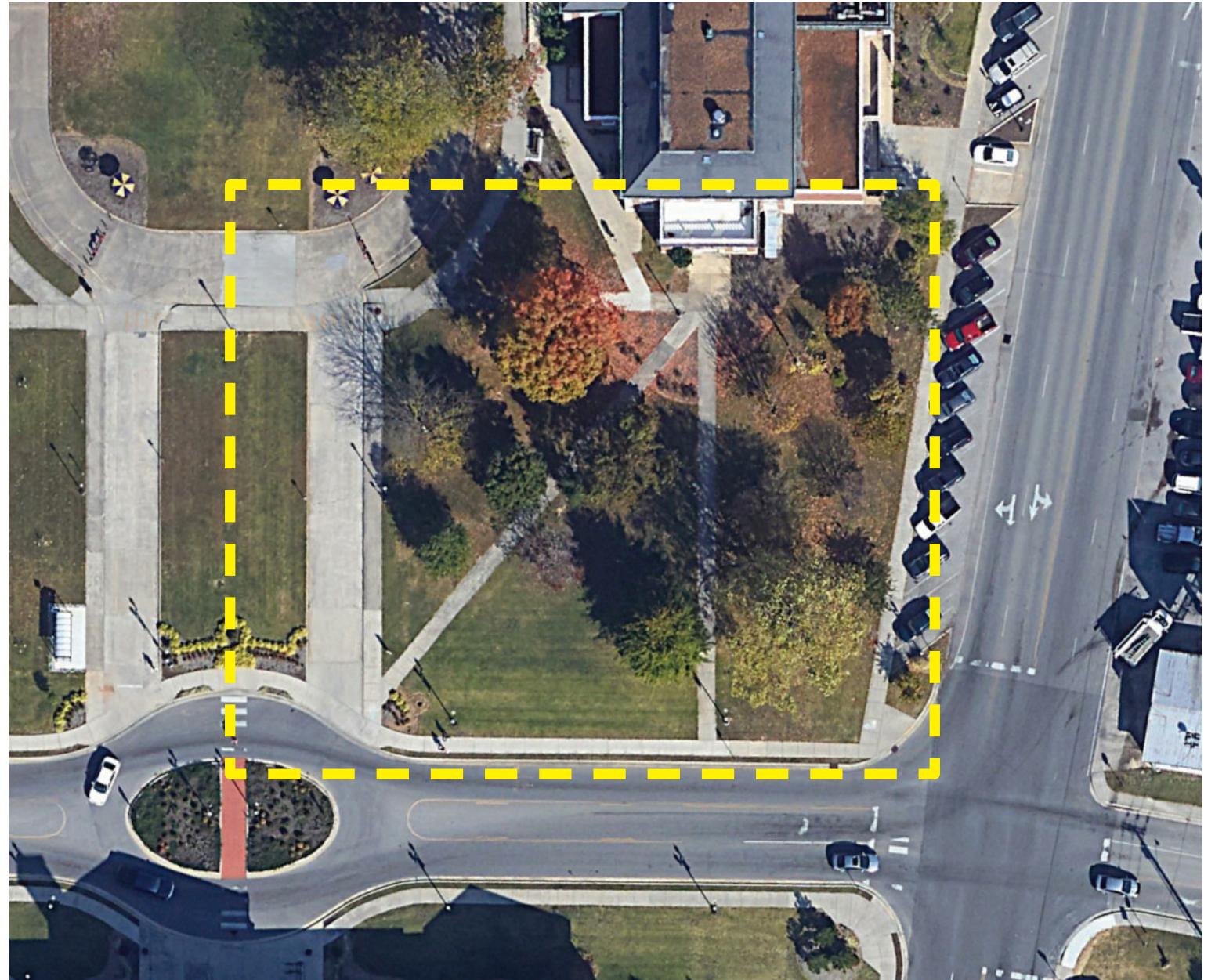


DESIGN GUIDELINES

TREE INVENTORY - Trees Per Acre (TPA)



THE QUAD - North End
31.25 TPA (1.28ac / 41 trees) - Majority Canopy Trees



THE QUAD - South End
32.25 TPA (.62ac / 20 trees) - Majority Canopy Trees

DESIGN GUIDELINES

TREE ANALYSIS - Campus Improvement Zones

The campus tree inventory has enabled the landscape to be organized into five distinct zones of planting intensity, each reflecting a different level of urgency, opportunity, and strategic focus:

CAMPUS LANDSCAPE LEGEND:

LEVEL 1 - Succession Planting

Successional Planting Zones: These encompass historic and well-established areas of campus where the primary goal is to preserve existing canopy and gradually expand coverage. Tree replacement and maintenance are carefully managed to uphold landscape character and continuity.

LEVEL 2 - Current or Recent Improvements

Current Improvement Zones: These areas include new and recently completed capital projects. Plantings here are designed to reinforce recent development and align with updated landscape guidelines.

LEVEL 3 - Future Improvement Zones

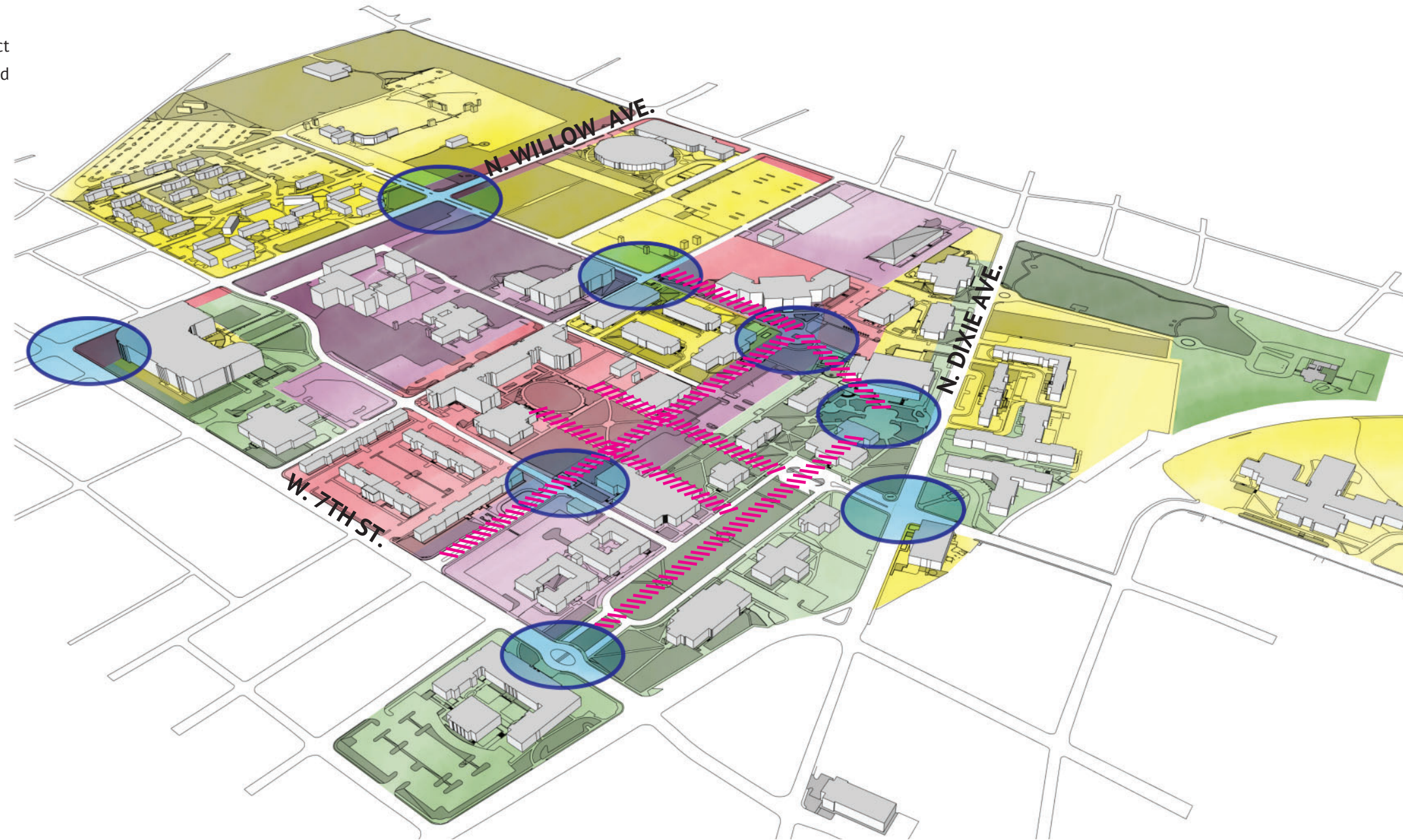
Future Improvement Zones: Representing lower-priority areas, these zones offer long-term opportunities for canopy enhancement. Planting strategies may involve slower implementation rates and smaller tree selections to allow for gradual growth.

LEVEL 4 - Priority Improvement Zones

Priority Zones: These are high-impact areas where targeted tree planting can quickly improve canopy coverage and visual identity. Due to their visibility and strategic location, they are central to near-term landscape goals.

LEVEL 5 - Intense Improvement Zones

Intense Improvement Zones: These zones require specialized landscape interventions, often tied to unique site conditions or signature campus projects. Tree planting in these areas is highly curated to achieve specific design or functional outcomes.



This zoned approach supports a phased and intentional strategy for campus canopy enhancement, balancing preservation, growth, and visual cohesion across the university landscape.

DESIGN GUIDELINES

TREE ANALYSIS - Campus Improvement Zones

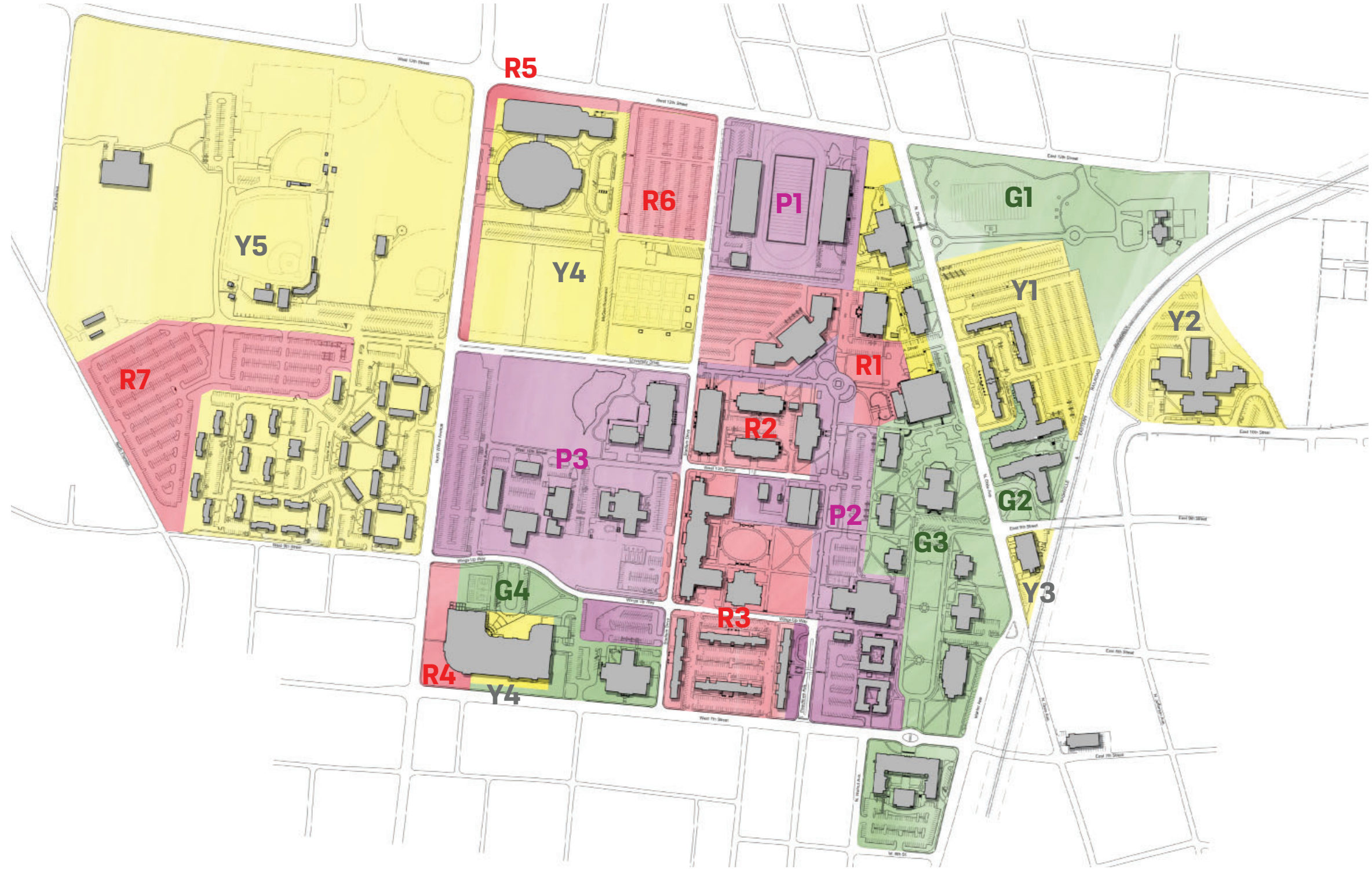
LEGEND:

- PURPLE**
 - P1 - 7.58 acres
 - P2 - 11.15 acres
 - P3 - 18.97 acres

- GREEN**
 - G1 - 12.36 acres
 - G2 - 2.74 acres
 - G3 - 15.54 acres
 - G4 - 5.38 acres

- YELLOW**
 - Y1 - 9.74 acres
 - Y2 - 5.41 acres
 - Y3 - .57 acres
 - Y4 - .75 acres
 - Y5 - 20.60 acres
 - Y6 - 74.00 acres

- RED**
 - R1 - 6.82 acres
 - R2 - 3.37 acres
 - R3 - 9.06 acres
 - R4 - 1.27 acres
 - R5 - 1.56 acres
 - R6 - 5.00 acres
 - R7 - 10.6 acres



DESIGN GUIDELINES

TREE ANALYSIS - Target Zone Calculations

CAMPUS TREE TARGETS

Target Tree Density	3,952 Trees
Current Inventory	1,630 Trees
Proposed Additions	2,322 Trees

TREE CANOPY BUILDOUT

10 Year Target
15 Year Target
20 Year Target

348 Trees per Year
232 Trees per Year
175 Trees per Year

- Propose 50% over plant for die back

CAMPUS OPEN SPACE PLANTING TARGETS

Updated 9.25.25

PRIORITY AREA	ACREAGE (without building)	PARKING and ATHLETICS AREA (acres)	OPEN SPACE (acres)	AREA TREES (Open Space Target 30 per acre)	AREA TREES (Parking Target 10 per acre)	SMALL & MEDIUM TREES			SMALL & MEDIUM TREES		PROPOSED TREES (Tree Totals)
						(Area Totals)	CANOPY TREES (Area Totals)	EXISTING TREES (Tree Totals)	(Proposed Planting)	CANOPY TREES (Proposed Planting)	
P1	7.58	0.84	6.74	202.2	8.4	0	13	13	69.16	128.44	197.6
P2	11.15	1.83	9.32	279.6	18.3	102	86	188	38.465	71.435	109.9
P3	18.97	6.39	12.58	377.4	63.9	63	78	141	105.105	195.195	300.3
G1	12.36		12.36	370.8	0	5	68	73	104.23	193.57	297.8
G2	2.74		2.74	82.2	0	13	33	46	12.67	23.53	36.2
G3	15.54	2.31	13.23	396.9	23.1	179	167	346	25.9	48.1	74
G4	6.13	0.63	5.5	165	6.3	23	52	75	33.705	62.595	96.3
Y1	9.74	6.49	3.25	97.5	64.9	3	9	12	52.64	97.76	150.4
Y2	5.41	3.6	1.81	54.3	36	2	9	11	27.755	51.545	79.3
Y3	0.57	0.3	0.27	8.1	3	0	0	0	3.885	7.215	11.1
Y4	15.6	14.15	1.45	43.5	141.5	11	39	50	47.25	87.75	135
Y5	63.4	45.37	18.03	540.9	453.7	165	343	508	170.31	316.29	486.6
R1	6.82	4.17	2.65	79.5	41.7	15	3	18	36.12	67.08	103.2
R2	3.37	0.7	2.67	80.1	7	9	51	60	9.485	17.615	27.1
R3	9.06	2.47	6.59	197.7	24.7	43	17	60	56.84	105.56	162.4
R4	1.27		1.27	38.1	0	1	3	4	11.935	22.165	34.1
R5	1.56		1.56	46.8	0	0	0	0	16.38	30.42	46.8
R6	5		5		50	15	0	15	12.25	22.75	35
R7	10.6		10.6		106	10	0	10	33.6	62.4	96

3060.6 892.5

Campus Open Space Trees Campus Parking Trees

659 971 1630

Existing Campus Trees

821.835 1526.265 2348.1

Small Medium Target Canopy Target Total Target Trees

CAMPUS TREE TARGET

EXISTING CAMPUS TREES

PROPOSED TREE ADDITIONS

CAMPUS TARGETS:

30 Trees Per Acre in Open Space Areas

65% Minimum Canopy Tree per Acre

10 Trees Per Acre for Parking Lot Locations

DESIGN GUIDELINES

TREE ANALYSIS - Target Zone Calculations

Following a comprehensive analysis of the campus tree inventory, along with multiple site tours and stakeholder meetings, two distinct sets of planting guidelines have been developed: one for new or capital projects, and another for existing campus spaces. Both are designed to support the university's goal of achieving a target density of 30 trees per acre while allowing more flexibility in existing spaces.

Existing Campus Areas can accommodate a broader mix of tree varieties, including select non-native species, to meet ongoing planting needs and support long-term canopy enhancement across the campus.

New Campus Projects adhere to stricter quantity targets—particularly regarding tree counts and distribution within the guidelines.

EXISTING CAMPUS - Per Acre Targets

30 Trees Per Acre - General Campus Area

- 65% Canopy Trees - Staple Trees, Campus Canopy Sustainability
60% Native
25% Evergreen

- Up to 35% Medium and Small Trees - Variety and Color, Shorter Term
50% Native
20% Evergreen

- Shrub Layer - As Needed to Screen Existing Elements
Parking Lot Boundary Screening
Mechanical Unit Screening

10 Trees Per Acre - Parking Lot Areas
Canopy Trees at 30' on center around Perimeter

NEW PROJECTS - Per Acre Targets

30 Trees Per Acre - General Campus Area

- 65% Canopy Trees Minimum - Staple Trees, Campus Canopy Sustainability
60% Native
25% Evergreen

- Up to 35% Medium and Small Trees - Variety and Color, Shorter Term
50% Native
20% Evergreen

10 Trees Per Acre - Parking Lot Areas

- Canopy Trees at 30' on center around Perimeter

- Foundation Shrub Planting
60% of Building with Shrub Layer Minimum
§ Focus Planting on Public Entrances and Areas exposed to Streets

- Screen Planting
Screen Mechanical and Operational areas with Evergreen Materials

DESIGN GUIDELINES

CAMPUS TREE GOALS - Succession Planting Zone

Successional planting zones carry a high priority in preserving the integrity of the existing campus canopy while allowing for modest expansion of its footprint. These areas require careful planning to maintain native canopy diversity and ensure continuity in landscape character.

Attention should be given to the stewardship of historic trees, with strategic planting used to replace specimens identified as being in decline. This approach supports a gradual transition that respects the established canopy while reinforcing long-term coverage and seasonal interest.

Tree replanting should occur within 12 months of planting removal and follow the 30 tree per acre guidelines.

LEGEND:

- GREEN**
- G1 - 12.36 acres**
- G2 - 2.74 acres**
- G3 - 15.54 acres (2.31ac parking)**
- G4 - 6.13 acres (.63ac parking)**



DESIGN GUIDELINES

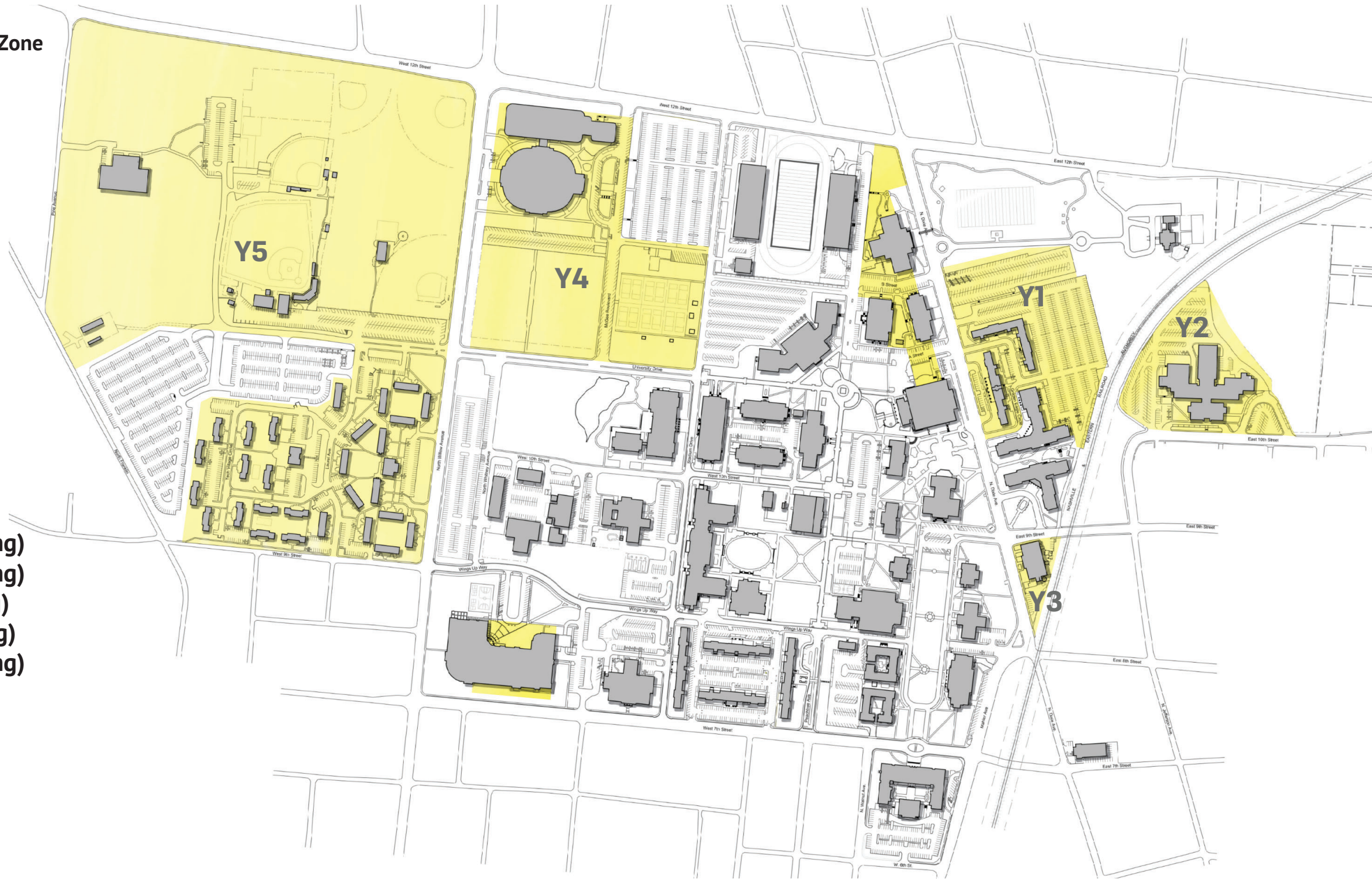
CAMPUS TREE GOALS - Intermediate Planting Zone

Intermediate planting zones should be approached with long-term opportunity in mind. Given their lower immediate impact on the overall campus canopy, these areas are well suited for phased implementation strategies that prioritize flexibility and gradual growth.

Smaller less mature tree sizes and slower planting rates can be utilized to establish canopy coverage over an extended timeline. This approach allows for thoughtful integration with future development, while still contributing to the university's broader goal of four-season landscape enhancement.

LEGEND:

- YELLOW**
- Y1 - 9.74 acres (6.49ac parking)**
- Y2 - 5.41 acres (3.60ac parking)**
- Y3 - .57 acres (.30ac parking)**
- Y4 - 15.6 acres (14.15 parking)**
- Y5 - 63.4 acres (45.3ac parking)**



DESIGN GUIDELINES

CAMPUS TREE GOALS - AREA Y1

Proposed Tree Additions - 151 ADDITIONAL TREES

98 - Canopy Trees (65% of Total)

74 - DECIDUOUS

45 - NATIVE MINIMUM (65%)

24 - EVERGREEN (25% of Small | Medium)

53 - Small | Medium Trees (35% of Total)

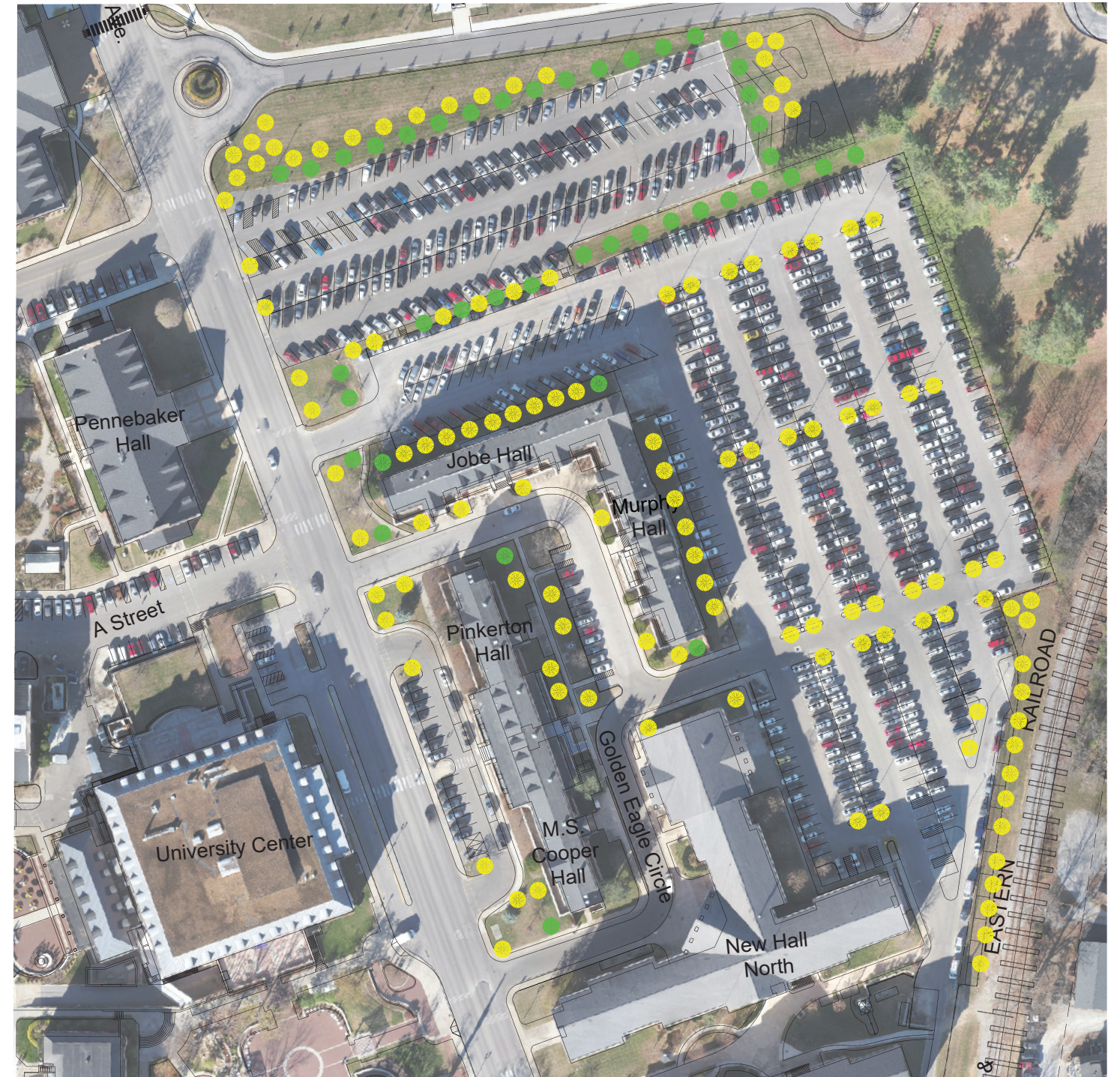
42 - DECIDUOUS

21 - NATIVE MINIMUM (50%)

11 - EVERGREEN (20% of Small | Medium)

● DECIDUOUS - PROPOSED LOCATIONS

● EVERGREEN - PROPOSED LOCATIONS



Note: All planting locations are approximate and need to be field located to account for existing conditions.

DESIGN GUIDELINES

CAMPUS TREE GOALS - AREA Y2

Proposed Tree Additions - 80 ADDITIONAL TREES

52 - Canopy Trees (65% of Total)

39 - DECIDUOUS

26 - NATIVE MINIMUM (65%)

13 - EVERGREEN (25% of Small | Medium)

28 - Small | Medium Trees (35% of Total)

22 - DECIDUOUS

11 - NATIVE MINIMUM (50%)

6 - EVERGREEN (20% of Small | Medium)

● DECIDUOUS - PROPOSED LOCATIONS

● EVERGREEN - PROPOSED LOCATIONS



Note: All planting locations are approximate and need to be field located to account for existing conditions.

DESIGN GUIDELINES

CAMPUS TREE GOALS - AREA Y3

Proposed Tree Additions - 12 ADDITIONAL TREES

8 - Canopy Trees (65% of Total)

6 - DECIDUOUS

4 - NATIVE MINIMUM (65%)

2 - EVERGREEN (25% of Small | Medium)

4 - Small | Medium Trees (35% of Total)

3 - DECIDUOUS

2 - NATIVE MINIMUM (50%)

1 - EVERGREEN (20% of Small | Medium)

● DECIDUOUS - PROPOSED LOCATIONS

● EVERGREEN - PROPOSED LOCATIONS



Note: All planting locations are approximate and need to be field located to account for existing conditions.

DESIGN GUIDELINES

CAMPUS TREE GOALS - AREA Y4

Proposed Tree Additions - 135 ADDITIONAL TREES

88 - Canopy Trees (65% of Total)

66 - DECIDUOUS

43 - NATIVE MINIMUM (65%)

22- EVERGREEN (25% of Small | Medium)

47 - Small | Medium Trees (35% of Total)

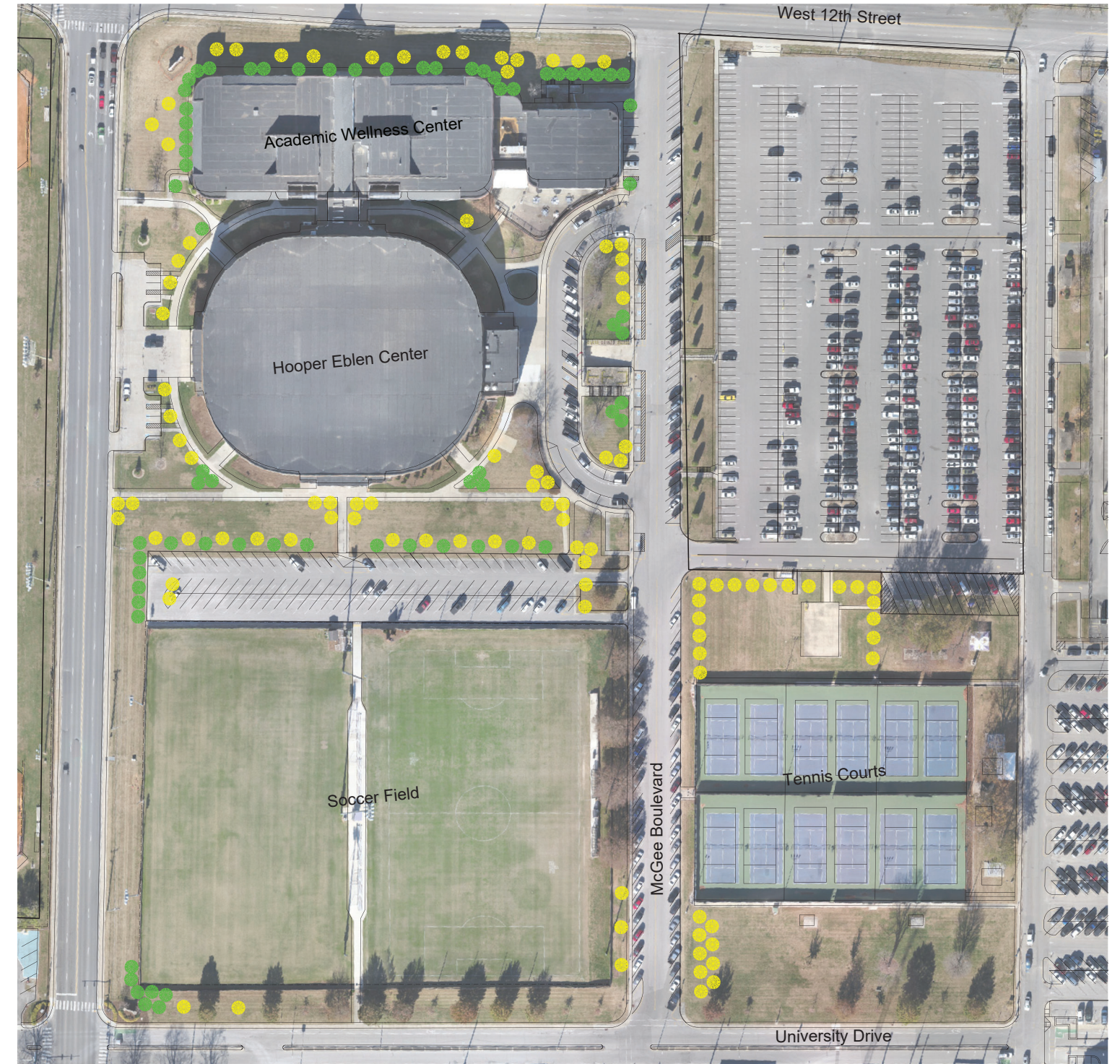
37- DECIDUOUS

19 - NATIVE MINIMUM (50%)

10 - EVERGREEN (20% of Small | Medium)

● DECIDUOUS - PROPOSED LOCATIONS

● EVERGREEN - PROPOSED LOCATIONS



Note: All planting locations are approximate and need to be field located to account for existing conditions.

DESIGN GUIDELINES

CAMPUS TREE GOALS - AREA Y5

Proposed Tree Additions - 486 ADDITIONAL TREES

316 - Canopy Trees (65% of Total)

237 - DECIDUOUS

154 - NATIVE MINIMUM (65%)

79- EVERGREEN (25% of Small | Medium)

170 - Small | Medium Trees (35% of Total)

136- DECIDUOUS

68 - NATIVE MINIMUM (50%)

34 - EVERGREEN (20% of Small | Medium)

● DECIDUOUS - PROPOSED LOCATIONS

● EVERGREEN - PROPOSED LOCATIONS



Note: All planting locations are approximate and need to be field located to account for existing conditions.

DESIGN GUIDELINES

CAMPUS TREE GOALS - Priority Planting Zone

These zones represent high-priority areas within the campus landscape plan. Due to their visibility, scale, and strategic location, tree plantings in these zones are expected to make a significant and measurable impact on the overall campus canopy within the next decade.

By focusing resources on these areas, the university can accelerate canopy coverage, enhance seasonal color diversity, and establish a cohesive visual identity across key corridors and gathering spaces. This targeted approach supports long-term planning goals while delivering noticeable improvements in the near term.

LEGEND:



RED

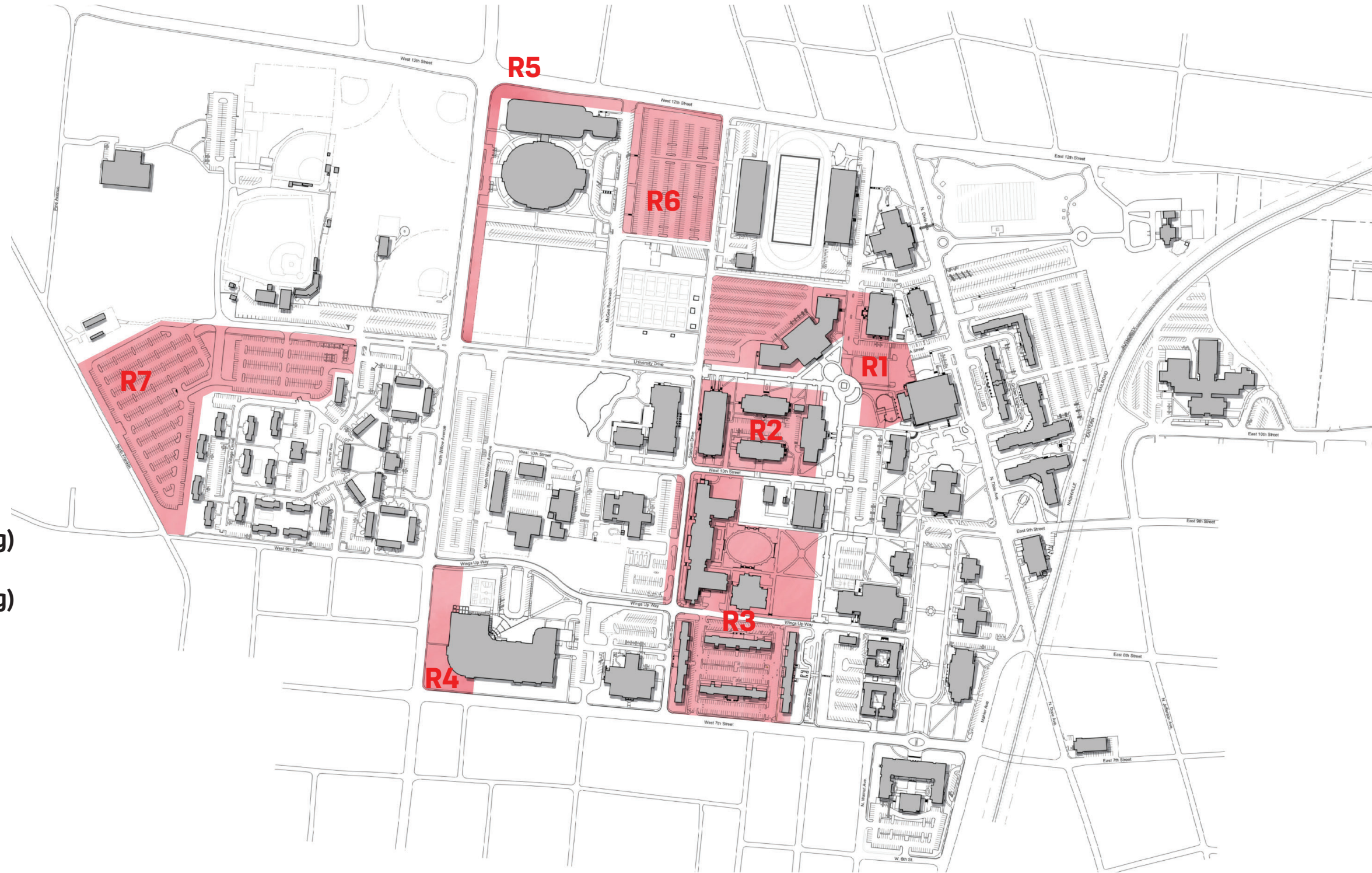
R1 - 6.82 acres (4.17ac parking)

R2 - 3.37 acres (.70ac parking)

R3 - 9.06 acres (2.47ac parking)

R4 - 1.27 acres

R5 - 1.56 acres



DESIGN GUIDELINES

CAMPUS TREE GOALS - AREA R1

Proposed Tree Additions - 105 ADDITIONAL TREES

68 - Canopy Trees (65% of Total)

51 - DECIDUOUS

34 - NATIVE MINIMUM (65%)

17- EVERGREEN (25% of Small | Medium)

37 - Small | Medium Trees (35% of Total)

29- DECIDUOUS

15 - NATIVE MINIMUM (50%)

8 - EVERGREEN (20% of Small | Medium)

● DECIDUOUS - PROPOSED LOCATIONS

● EVERGREEN - PROPOSED LOCATIONS



Note: All planting locations are approximate and need to be field located to account for existing conditions.

DESIGN GUIDELINES

CAMPUS TREE GOALS - AREA R2

Proposed Tree Additions - 28 ADDITIONAL TREES

18 - Canopy Trees (65% of Total)

13 - DECIDUOUS

9 - NATIVE MINIMUM (65%)

5- EVERGREEN (25% of Small | Medium)

10 - Small | Medium Trees (35% of Total)

8- DECIDUOUS

4 - NATIVE MINIMUM (50%)

2 - EVERGREEN (20% of Small | Medium)

● DECIDUOUS - PROPOSED LOCATIONS

● EVERGREEN - PROPOSED LOCATIONS



Note: All planting locations are approximate and need to be field located to account for existing conditions.

DESIGN GUIDELINES

CAMPUS TREE GOALS - AREA R3

Proposed Tree Additions - 163 ADDITIONAL TREES

106 - Canopy Trees (65% of Total)

79 - DECIDUOUS

52 - NATIVE MINIMUM (65%)

27- EVERGREEN (25% of Small | Medium)

57 - Small | Medium Trees (35% of Total)

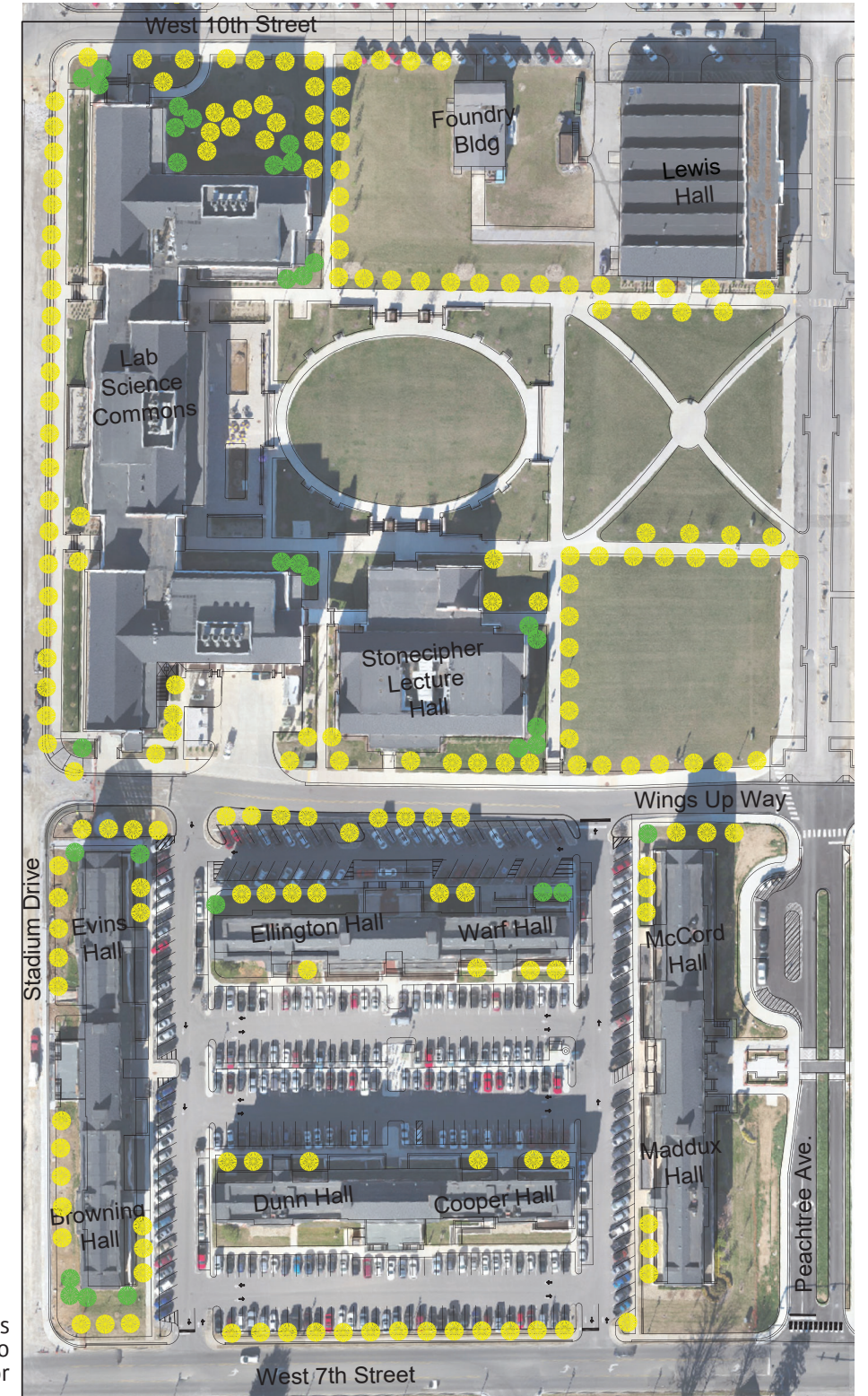
45- DECIDUOUS

23 - NATIVE MINIMUM (50%)

12 - EVERGREEN (20% of Small | Medium)

● DECIDUOUS - PROPOSED LOCATIONS

● EVERGREEN - PROPOSED LOCATIONS



Note: All planting locations are approximate and need to be field located to account for existing conditions.

DESIGN GUIDELINES

CAMPUS TREE GOALS - AREA R4

Proposed Tree Additions - 35 ADDITIONAL TREES

23 - Canopy Trees (65% of Total)

17 - DECIDUOUS

12 - NATIVE MINIMUM (65%)

6 - EVERGREEN (25% of Small | Medium)

12 - Small | Medium Trees (35% of Total)

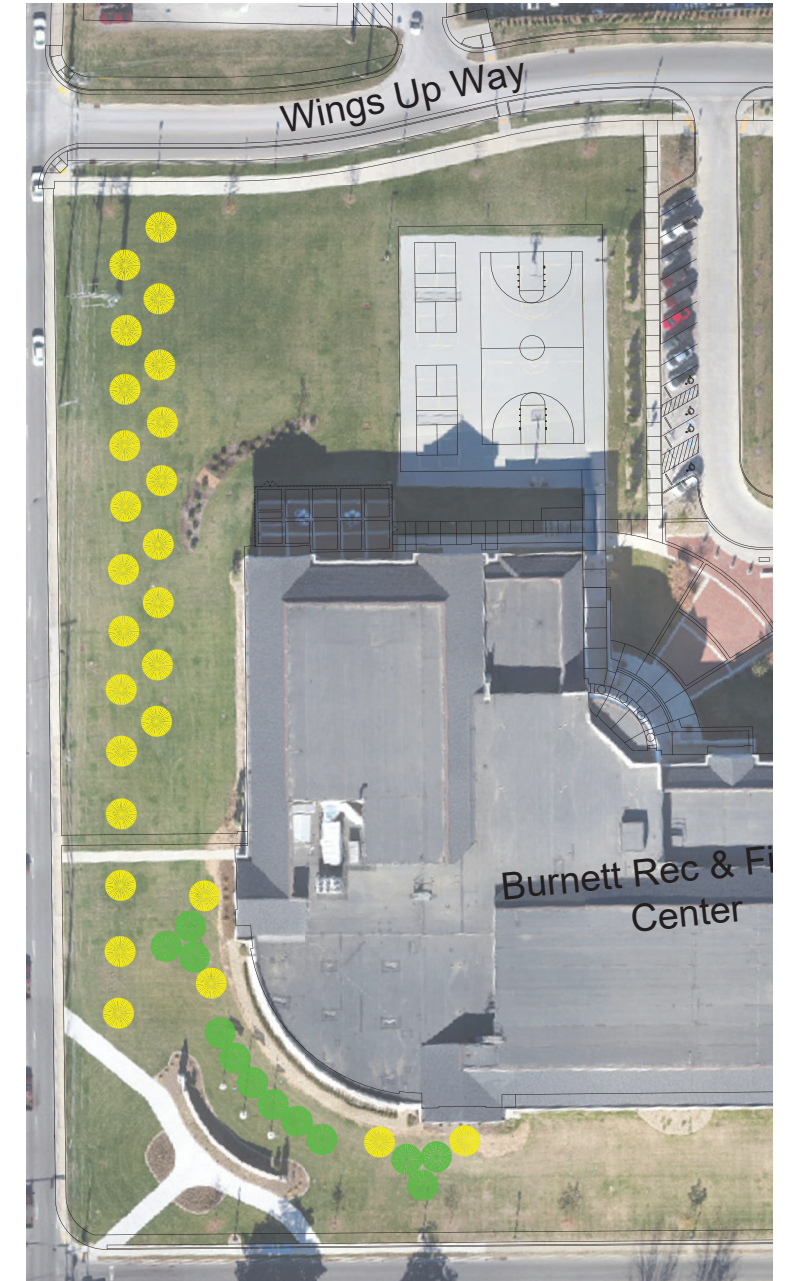
9- DECIDUOUS

5 - NATIVE MINIMUM (50%)

3 - EVERGREEN (20% of Small | Medium)

● DECIDUOUS - PROPOSED LOCATIONS

● EVERGREEN - PROPOSED LOCATIONS



Note: All planting locations are approximate and need to be field located to account for existing conditions.

DESIGN GUIDELINES

CAMPUS TREE GOALS - AREA R5

Proposed Tree Additions - 48 ADDITIONAL TREES

31 - Canopy Trees (65% of Total)

23 - DECIDUOUS

15 - NATIVE MINIMUM (65%)

8 - EVERGREEN (25% of Small | Medium)

17 - Small | Medium Trees (35% of Total)

13 - DECIDUOUS

7 - NATIVE MINIMUM (50%)

4 - EVERGREEN (20% of Small | Medium)

● DECIDUOUS - PROPOSED LOCATIONS

● EVERGREEN - PROPOSED LOCATIONS



DESIGN GUIDELINES

CAMPUS TREE GOALS - AREA R6

Proposed Tree Additions - 36 ADDITIONAL TREES

23 - Canopy Trees (65% of Total)

17 - DECIDUOUS

12 - NATIVE MINIMUM (65%)

6- EVERGREEN (25% of Small | Medium)

13 - Small | Medium Trees (35% of Total)

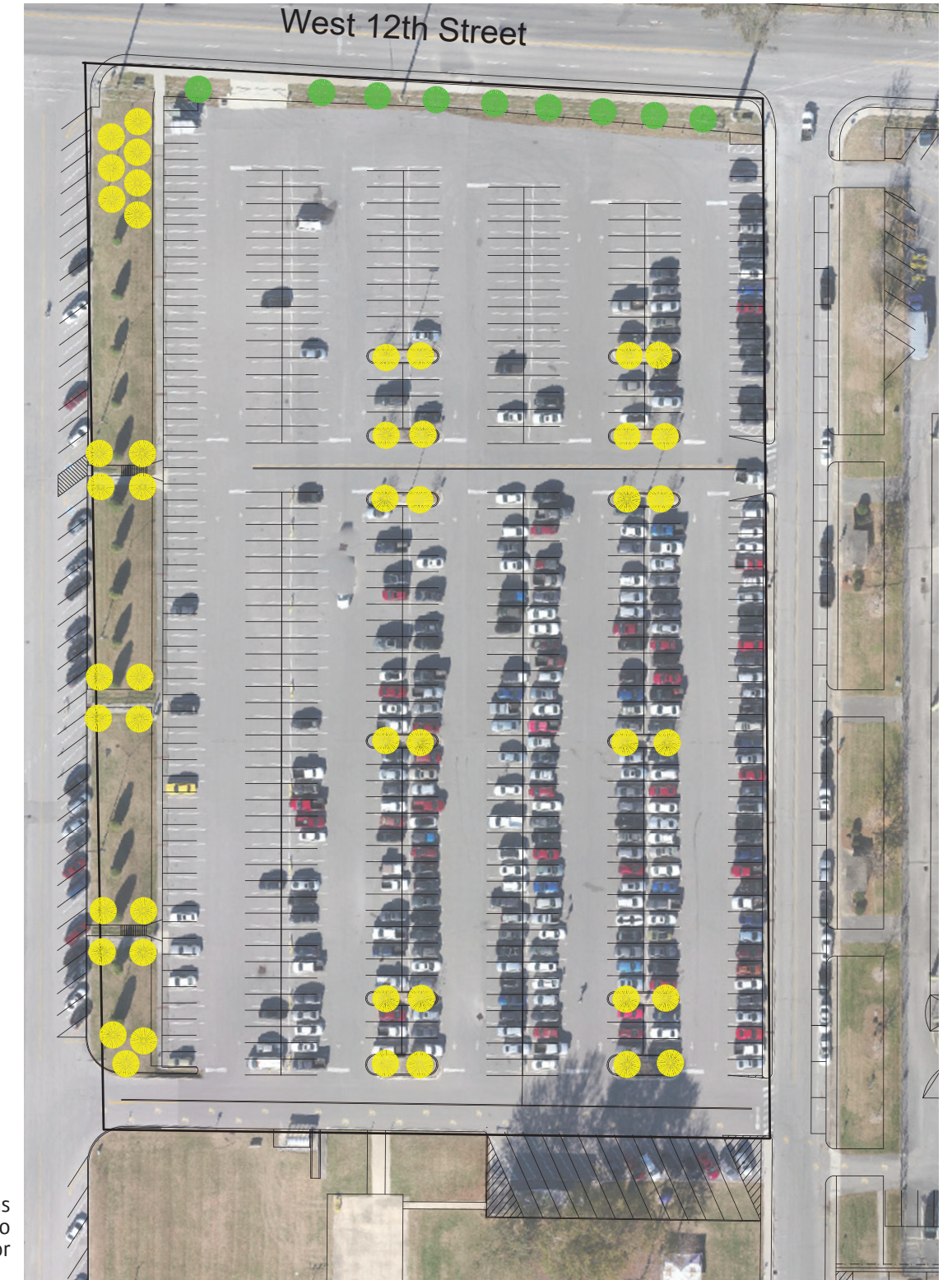
10- DECIDUOUS

5 - NATIVE MINIMUM (50%)

3 - EVERGREEN (20% of Small | Medium)

● DECIDUOUS - PROPOSED LOCATIONS

● EVERGREEN - PROPOSED LOCATIONS



Note: All planting locations are approximate and need to be field located to account for existing conditions.

DESIGN GUIDELINES

CAMPUS TREE GOALS - AREA R7

Proposed Tree Additions - 97 ADDITIONAL TREES

63 - Canopy Trees (65% of Total)

47 - DECIDUOUS

31 - NATIVE MINIMUM (65%)

16- EVERGREEN (25% of Small | Medium)

34 - Small | Medium Trees (35% of Total)

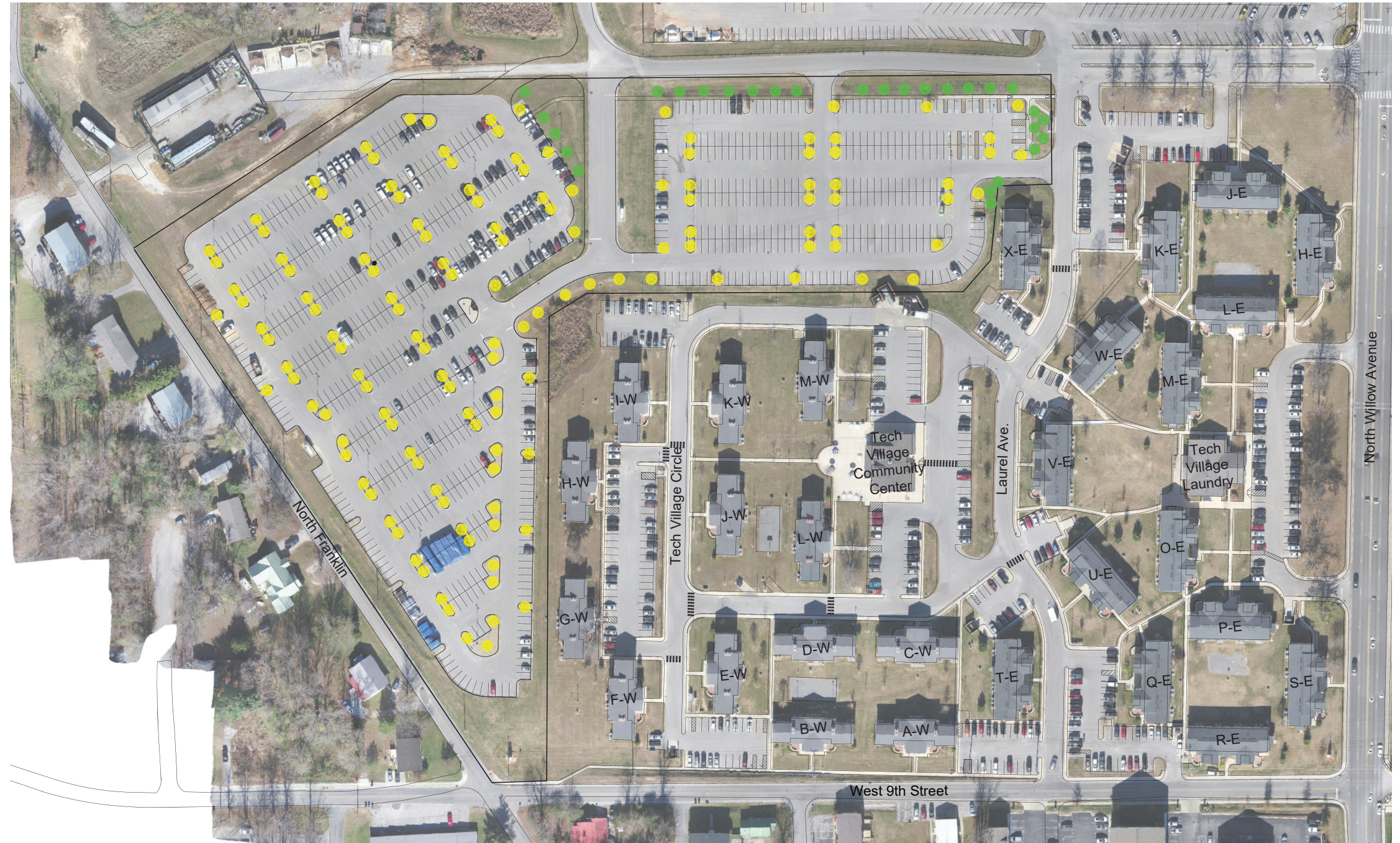
27- DECIDUOUS

14 - NATIVE MINIMUM (50%)

7 - EVERGREEN (20% of Small | Medium)

● DECIDUOUS - PROPOSED LOCATIONS

● EVERGREEN - PROPOSED LOCATIONS



Note: All planting locations are approximate and need to be field located to account for existing conditions.

CAPITAL PROJECTS

LEGEND:



PURPLE

- P1 - 7.58 acres (.84ac parking)
- P2 - 11.15 acres (1.83ac Parking)
- P3 - 18.97 acres (6.39ac Parking)

Proposed Tree Additions - 612 ADDITIONAL TREES

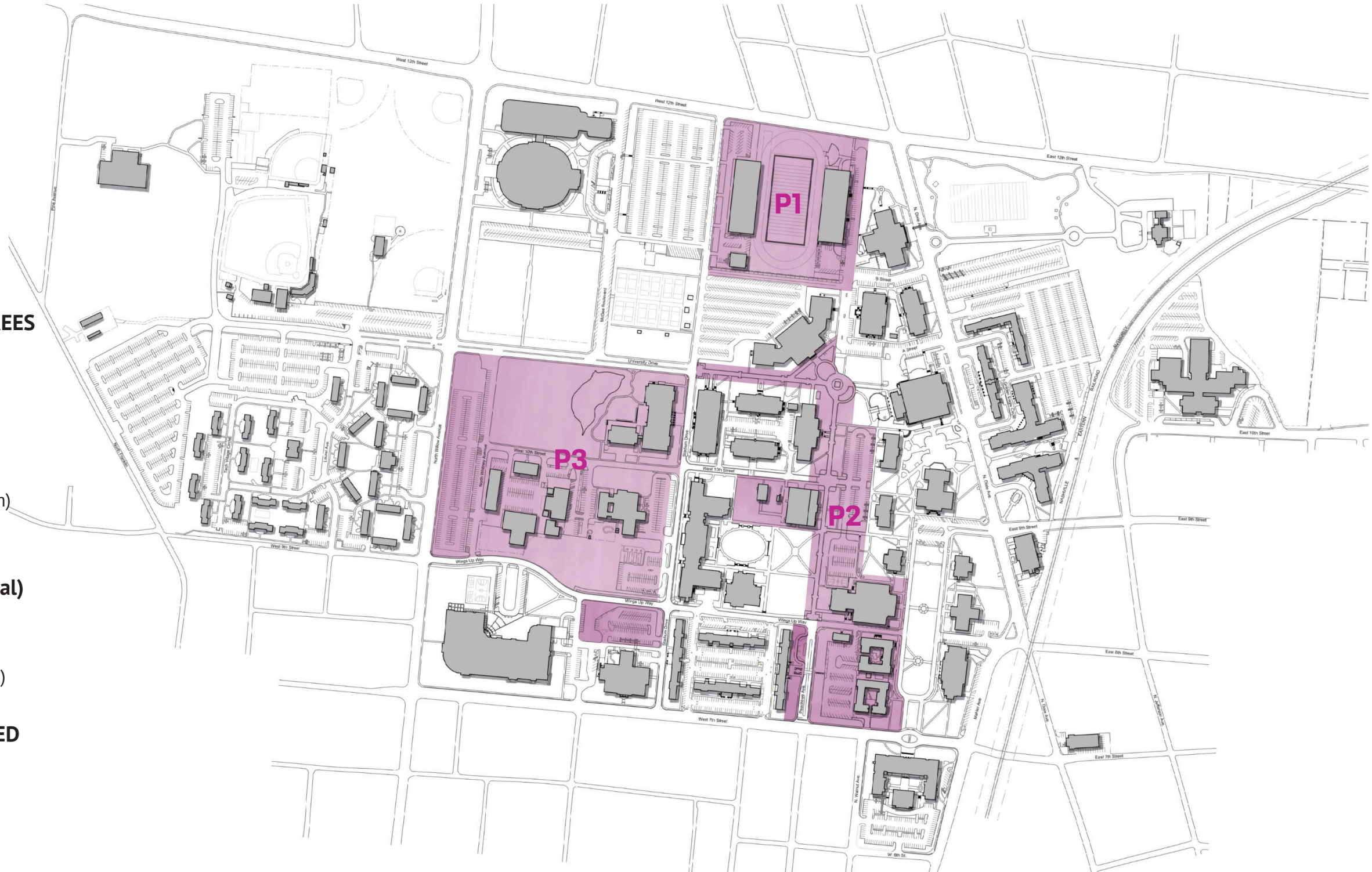
397 - Canopy Trees (65% of Total)

- 297 - DECIDUOUS
 - 194 - NATIVE MINIMUM (65%)
- 100- EVERGREEN (25% of Small | Medium)

215 - Small | Medium Trees (35% of Total)

- 172- DECIDUOUS
 - 86 - NATIVE MINIMUM (50%)
- 43 - EVERGREEN (20% of Small | Medium)

TREES AND LOCATIONS WILL BE PROVIDED WITHIN PROJECT DEVELOPMENT



DESIGN GUIDELINES

CAPITAL PROJECTS - Plant Density Standards

As part of new and ongoing capital projects, this initiative is focused on delivering a calculated enhancement to the campus canopy. By integrating tree plantings into priority development zones, the university ensures that landscape improvements are aligned with broader infrastructure and planning goals.

A weighted emphasis on canopy coverage, evergreen structure, and native tree species will establish a cohesive visual identity across campus. This approach reflects the character of the Middle Tennessee landscape and supports a four-season palette of color and texture throughout the university grounds

TTU CAPITAL PROJECT PLANTING GOALS					Updated 9.28.25
Project: TEST					
Date: SEPTEMBER 2025					
OVERALL PROJECT CALCULATIONS					
Project Area (project boundary with building)		1	acres		
Building Area (subtract)	(-)	0.25	acres		
Adjusted Project Area		1.25	acres		
Parking Lot (subtract)		0.5	acres	(x 10)	5
Required Project Planting (Open Space)		0.75	acres	(x30)	22.5
Existing Trees - 1 Credit per 6" DBH					4
Total Project Tree Requirements					23.5
Total Trees Provided					50
					Tree Credit for Every 6" of DBH
					Required Total of Trees
					Total of Canopy, Medium and Small Trees
TREE PLANTING TARGETS					
		Minimum Required %	Trees Provided	% Provided	
Canopy Trees:					
Canopy Trees Required (Percent of Total Tree Planting)		65%	35	70%	65% Minimum
- Native Trees (percent of canopy trees)		60%	25	71% (x.60)	60% Minimum
- Evergreen Trees (percent of canopy trees)		25%	9	26% (x.25)	25% Minimum
Medium and Small Trees:					
Total Medium and Small Trees			15		
- Native Trees (percent of canopy trees)		50%	10	67% (x.50)	50% Minimum
- Evergreen Trees (percent of canopy trees)		25%	5	33% (x.25)	25% Minimum
FOUNDATION PLANTING TARGETS					
Shrub Requirements:		Required %	Linear Feet of Foundation	Linear Feet Provided	% Provided
Building Foundation Planting Coverage Area (Hardscape areas against the building are excluded)		50%	850	500	59%
Note:					
All mechanical and operational areas are to be screened by evergreen shrubs.					
Plant materials are to meet the TTU recommended plant palette or approved by TTU after review.					

S

DESIGN GUIDELINES

LANDSCAPE IDENTITY

Each fall, the university campus is enhanced by a collection of golden-leaved trees, such as maples and ginkgos, which contribute a striking seasonal display. Their vibrant yellow foliage creates a warm and visually engaging environment, enriching the academic setting with natural beauty and offering a distinctive sense of place during the autumn months.

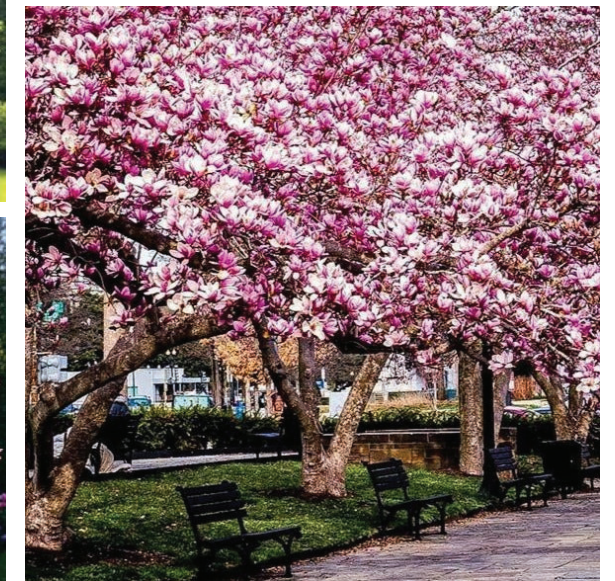
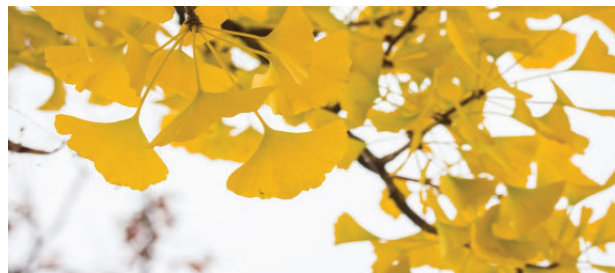
In spring, a separate group of ornamental trees—such as redbuds or magnolias—introduces a vivid contrast with their purple blossoms. These flowering trees provide a dynamic and uplifting atmosphere, signaling renewal and growth. Together, the seasonal plantings reflect the university’s commitment to landscape design that supports both aesthetic appeal and environmental stewardship.

PLANTING COLOR DIVERSITY

To promote vibrant tree color throughout all four seasons, campus planting plans will incorporate a balanced mix of evergreen, flowering, and native deciduous trees. This combination ensures consistent visual interest—from winter greenery to spring blossoms, summer shade, and striking fall foliage.

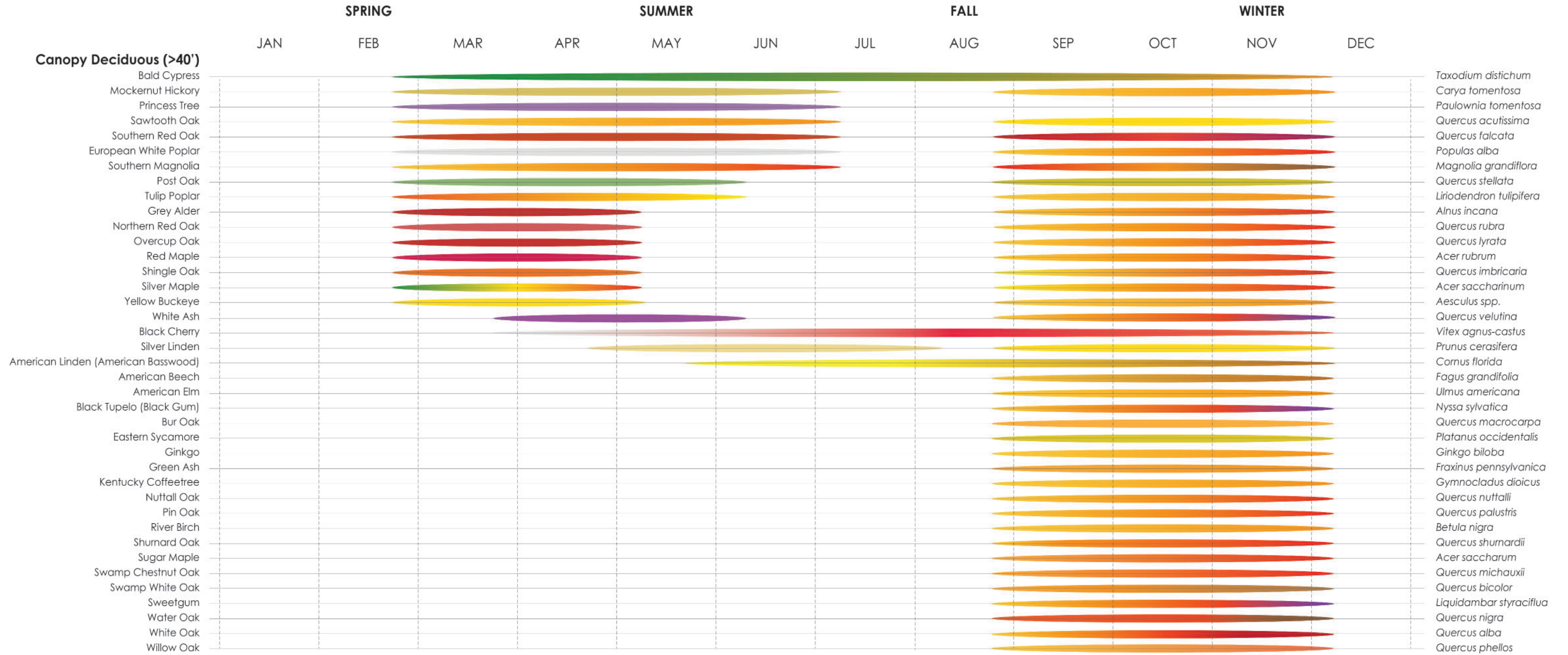
Tree selection and placement will be guided by calculations that account for seasonal coverage, canopy density, and spatial distribution. By integrating species with complementary bloom times and foliage characteristics, the campus landscape will maintain a dynamic and appealing aesthetic year-round.

Following the project planting goals and approved tree lists will promote diversity among all desired areas of plant categories.



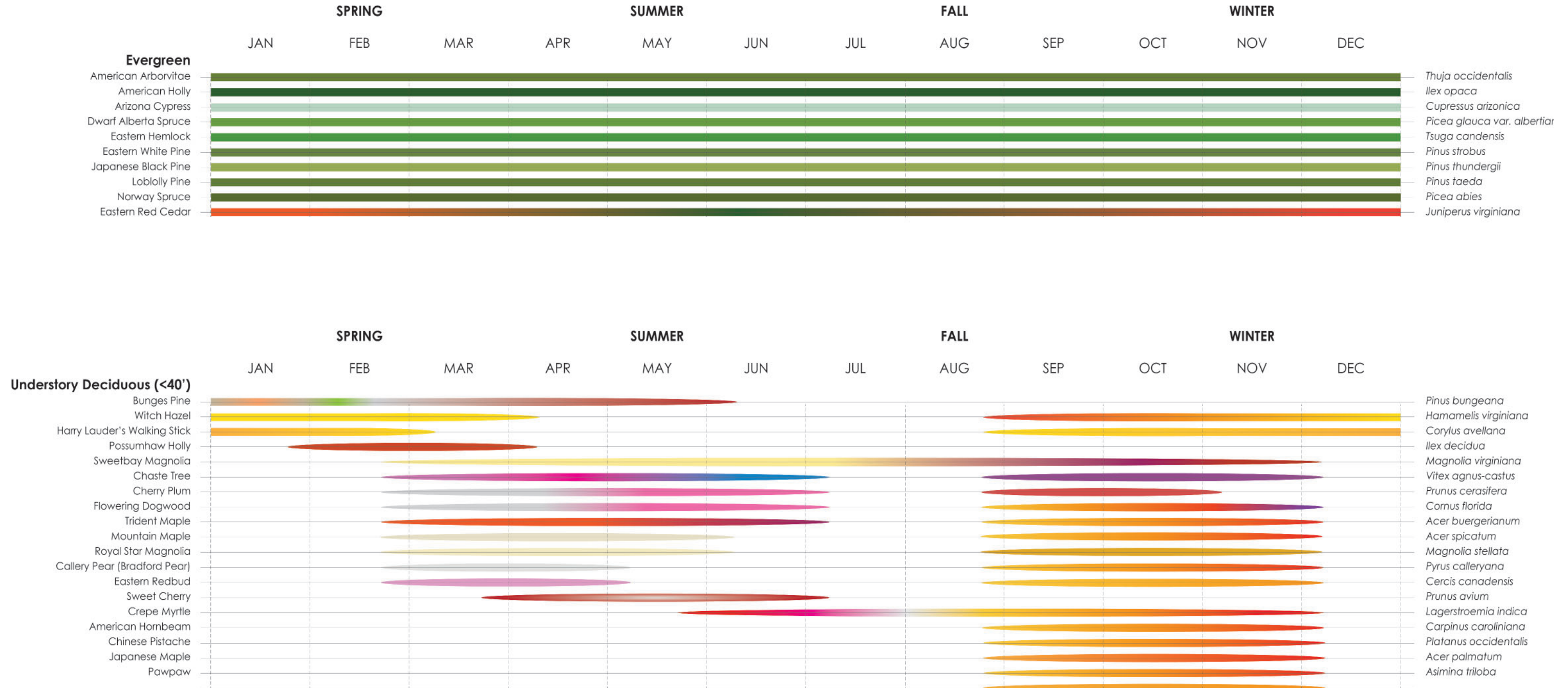
DESIGN GUIDELINES

TTU LANDSCAPE COLOR BY SEASON



DESIGN GUIDELINES

TTU LANDSCAPE COLOR BY SEASON



DESIGN GUIDELINES

APPROVED LIST - DECIDUOUS CANOPY TREES

Canopy Trees: Deciduous							
Common Name	Scientific Name	Type	Native/Non-Native	Flowering	Bloom Season	Bloom Color	
American Beech	<i>Fagus grandifolia</i>	Deciduous	Native	No			
American Elm	<i>Ulmus americana</i>	Deciduous	Native	No			
American Linden (American Basswood)	<i>Tilia americana</i>	Deciduous	Native	Yes	Spring/Summer	Yellow	
Bald Cypress	<i>Taxodium distichum</i>	Deciduous	Native	Yes	Spring	Purple	
Black Tupelo	<i>Nyssa sylvatica</i>	Deciduous	Native	Yes	Spring/Summer	White	
Black Cherry	<i>Prunus serotina</i>	Deciduous	Native	Yes	Spring/Summer	White	
Black Oak	<i>Quercus velutina</i>	Deciduous	Native	No			
Bur Oak	<i>Quercus macrocarpa</i>	Deciduous	Native	No			
European White Poplar	<i>Populus alba</i>	Deciduous	Non-Native	No			
Ginkgo	<i>Ginkgo biloba</i>	Deciduous	Non-Native	No			
Green Ash	<i>Fraxinus pennsylvanica</i>	Deciduous	Native	No			
Kentucky Coffeetree	<i>Gymnocladus dioica</i>	Deciduous	Native	Yes	Summer	White	
Mockernut Hickory	<i>Carya tomentosa</i>	Deciduous	Native	No			
Northern Red Oak	<i>Quercus rubra</i>	Deciduous	Native	No			
Nuttall Oak	<i>Quercus nuttalli</i>	Deciduous	Native	No			
Ohio Buckeye	<i>Aesculus glabra</i>	Deciduous	Native	Yes	Spring	Yellow	
Overcup Oak	<i>Quercus lyrata</i>	Deciduous	Native	No			
Pin Oak	<i>Quercus palustris</i>	Deciduous	Native	No			
Post Oak	<i>Quercus stellata</i>	Deciduous	Native	No			
Princess Tree	<i>Paulownia tomentosa</i>	Deciduous	Non-Native	Yes	Spring	Varies	
Red Maple	<i>Acer rubrum</i>	Deciduous	Native	Yes	Spring	Pink	
River Birch	<i>Betula nigra</i>	Deciduous	Native	No			
Sawtooth Oak	<i>Quercus acutissima</i>	Deciduous	Non-Native	No			
Shagbark Hickory	<i>Carya Ovata</i>	Deciduous	Native	No			
Shingle Oak	<i>Quercus imbricaria</i>	Deciduous	Native	No			
Shumard Oak	<i>Quercus shumardii</i>	Deciduous	Native	No			
Silver Linden	<i>Tilia tomentosa</i>	Deciduous	Non-Native	Yes	Spring/Summer	Yellow	
Southern Red Oak	<i>Quercus falcata</i>	Deciduous	Native	No			
Sugar Maple	<i>Acer saccharum</i>	Deciduous	Native	No			
Swamp Chestnut Oak	<i>Quercus michauxii</i>	Deciduous	Native	No			
Swamp White Oak	<i>Quercus bicolor</i>	Deciduous	Native	No			
Tulip Poplar	<i>Liriodendrum tulipifera</i>	Deciduous	Native	Yes	Spring	Yellow	
Water Oak	<i>Quercus Nigra</i>	Deciduous	Native	No			
White Ash	<i>Fraxinus americana</i>	Deciduous	Native	No			
White Oak	<i>Quercus alba</i>	Deciduous	Native	No			
Willow Oak	<i>Quercus phellos</i>	Deciduous	Native	No			
Yellow Buckeye	<i>Aesculus flava</i>	Deciduous	Native	Yes	Spring/Summer	Yellow	

DESIGN GUIDELINES

APPROVED LIST - EVERGREEN CANOPY TREES

Canopy Trees: Evergreen						
Common Name	Scientific Name	Native/Non-Native	Flowering	Bloom Season	Bloom Color	
American Arborvitae	<i>Thuja occidentalis</i>	Native	No			
American Holly	<i>Ilex opaca</i>	Native	No			
Arizona Cypress	<i>Hesperocyparis arizonica</i>	Native	No			
Brackens Brown Beauty	<i>Magnolia Ggrandiflora</i>	Native	Yes	Spring/Summer	White	
Bunges Pine	<i>Pinus Bungeana</i>	Non-Native	No			
DD Blanchard Magnolia	<i>Magnolia grandiflora</i>	Native	Yes	Spring/Summer	White	
Deodar Cedar	<i>Cedrus deodara</i>	Non-Native	No			
Dwarf Alberta Spruce	<i>Picea glauca var. albertiana</i>	Non-Native	No			
Eastern Hemlock	<i>Tsuga canadensis</i>	Native	No			
Eastern Sycamore	<i>Platanus occidentalis</i>	Native	No			
Eastern Red Cedar	<i>Juniperus virginiana</i>	Native	No			
Eastern White Pine	<i>Pinus strobus</i>	Native	No			
Golden Mop	<i>Chamaecyparis</i>	Non-Native	No			
Green Giant Arborvitae	<i>Thuja standishii x plicata</i>	Non-Native	No			
Japanese Black Pine	<i>Pinus thurbergii</i>	Non-Native	No			
Japanese Cryptomeria	<i>Cryptomeria Japonica</i>	Non-Native	No			
Loblolly Pine	<i>Pinus taeda</i>	Native	No			
Norway Spruce	<i>Picea abies</i>	Non-Native	No			
Southern Magnolia	<i>Magnolia grandiflora</i>	Native	Yes	Spring/Summer	White	

DESIGN GUIDELINES

APPROVED LIST - SMALL MEDIUM TREES

Medium Trees: Deciduous						
Common Name	Scientific Name	Type	Native/Non-Native	Flowering	Bloom Season	Bloom Color
American Hornbeam	Carpinus caroliniana	Deciduous	Native	No		
American Hophornbeam	Ostrya virginiana	Deciduous	Native	Yes	Spring	Green
Cherry Plum	Prunus cerasifera	Deciduous	Non-Native	Yes	Spring	White
Cherry Tree	Prunus x yedoensis	Deciduous	Non-Native	Yes	Spring/Summer	Varies
Chinese Pistache	Pistacia chinensis	Deciduous	Non-Native	No		
Crepe Myrtle	Lagerstroemia indica	Deciduous	Non-Native	Yes	Spring/Summer	Pink
Grey Alder	Alnus incana	Deciduous	Native	No		
Juniper (Chinese)	Juniperus chinensis	Evergreen	Non-Native	No		
Possumhaw Holly	Ilex decida	Deciduous	Native	Yes	Winter	Red
Red Buckeye	Aesculus pavia	Deciduous	Native	Yes	Spring	Red
Royal Star Magnolia	Magnolia stellata	Deciduous	Non-Native	Yes	Spring/Summer	White
Sweet Cherry	Prunus avium	Deciduous	Non-Native	Yes	Spring	White
Trident Maple	Acer buergerianum	Deciduous	Non-Native	Yes	Spring	Yellow
Washington Hawthorn	Crataegus phaenopyrum	Deciduous	Native	Yes	Spring	Pink
Yoshino/Akebono Cherry	Prunus x yedoensis	Deciduous	Non-Native	Yes	Spring	Pink
Medium Trees: Evergreen						
Common Name	Scientific Name	Type	Native/Non-Native	Flowering	Bloom Season	Bloom Color
Sweetbay Magnolia	Magnolia virginiana	Evergreen	Native	Yes	Spring/Summer	White
Understory Trees: Deciduous						
Common Name	Scientific Name	Type	Native/Non-Native	Flowering	Bloom Season	Bloom Color
American Beautyberry	Callicarpa americana	Deciduous	Native	Yes	Summer	Pink
Chaste Tree	Vitex agnus-castus	Deciduous	Non-Native	Yes	Spring/Summer	Blue
Eastern Redbud	Cercis canadensis	Deciduous	Native	Yes	Spring/Summer	Varies
Flowering Dogwood	Cornus florida	Deciduous	Native	Yes	Spring/Summer	Varies
Fringe Tree	Chioanthus virginicus	Deciduous	Native		Spring/Summer	White
Harry Lauder's Walking Stick	Corylus avellana	Deciduous	Non-Native	Yes	Spring	Varies
Japanese Maple	Acer palmatum	Deciduous	Non-Native	No		
Mountain Maple	Acer spicatum	Deciduous	Native	Yes	Spring	Yellow
Pawpaw	Asimina triloba	Deciduous	Native	Yes	Spring	Red
Serviceberry	Amelanchier arborea	Deciduous	Native	Yes	Spring	White
Witch Hazel	Hamamelis virginica	Deciduous	Native	Yes	Autumn	Yellow
Understory Trees: Evergreen						
Schip Laurel	Prunus laurocerasus	Evergreen	Non-Native	No		

ADDITIONAL CAMPUS TREE GUIDELINES

Tree Replacement Strategy

For every existing campus tree removed, two replacement trees shall be planted for every 12 inches of the removed tree's diameter at breast height (DBH). All replacement trees must comply with the species, size, and zone-specific requirements outlined in the university's Landscape Guidelines.

Annual Tree Planting

The total number of trees planted annually will be tracked as part of the university's comprehensive campus canopy strategy. All plantings will be documented in the campus tree inventory to support long-term planning and maintenance.

Maximum Annual Tree Installations

The combined total of trees planted by both the grounds crew and capital projects shall not exceed 250 trees per calendar year. For example, if a capital project reaches the annual planting limit, no additional trees will be planted by the grounds crew that year. This cap ensures a manageable volume of new trees for operations and maintenance teams.

Tree Removal Protocol

All tree removals must be reviewed and approved by the Associate Vice President of Facilities and Business Services in coordination with the Grounds Manager. This process ensures that removals are properly documented and that replacement requirements are met in accordance with campus guidelines.

Invasive Plant Policy

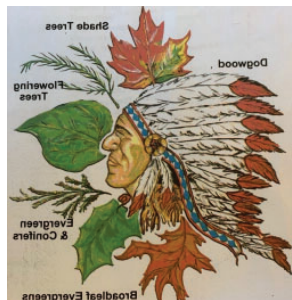
In order to preserve the ecological integrity of our campus and promote sustainable landscaping practices, we are committed to using only non-invasive plant species in all planting and maintenance activities. Invasive plants can disrupt local ecosystems, outcompete native species, and negatively impact biodiversity. By prioritizing non-invasive and, whenever possible, native plants, we aim to create a healthy, resilient environment that supports local wildlife and enhances the natural beauty of our campus. This policy reflects our dedication to environmental stewardship and responsible resource management.



DESIGN GUIDELINES

LANDSCAPE SUPPLIERS

These suppliers meet the requirements established by the university's Landscape Guidelines. Their products align with campus specifications for tree species, size, planting standards, and zone-specific considerations. By sourcing from approved vendors, the university ensures consistency in quality, compliance with planting protocols, and successful integration into the broader campus canopy strategy.



HAWKERSMITH & SONS

950 Hawkermith Rd
Tullahoma, TN 37388
(931) 455-5436



SOUTHEASTERN GROWERS

2240 Macon Highway
Watkinsville, GA 30677
(706) 310-1151



SELECT TREES

225 William Pope Road
Crawford, GA 30630
(706) 743-5124



MOONS TREE FARM

175 Happy Hollow Rd
Washington, GA 30673
(770) 554-6849



PLANTATION TREE COMPANY

120 County Rd
Selma, AL 36703
(334) 875-9176



BOLD SPRINGS

1366 Columbus Highway
Hawkinsville, GA 31036
(478) 783-4975



CHERRY SPRINGS

215 Lorance Lane
McMinville, TN 37110
(800) 438-8574



WATKINS
NURSERIES

WATKINS NURSERIES

110 Dry Bridge Road
Midlothian, VA 23114
(804) 379-8733



SHADY GROVE

3030 Charleston Road
Orangeburg, SC 29115
(803) 534-5683



RIVERBEND NURSERIES

2008 Lewisburg Pike
Franklin, TN 37064
(615) 468-2008



CHERRY CREEK NURSERY

3600 Valley View Road
Cookeville, TN 38506
(931) 526-7682