

ADDENDUM

ADDENDUM No. <b>2</b>		GMCa JOB #: 202113 TDH
ISSUE DATE: 04.05.24		SBC #: 364/011-05-2021
PROJECT: Tennessee Tech University Derryberry Hall – Building Upgrades – Phase I		1 William L. Jones Drive Cookeville, TN 38505
OWNER: Tennessee Tech University		1 Bridgestone Park, 3 <sup>rd</sup> Floor Nashville, TN 37214
ARCHITECT: Gilbert McLaughlin Casella architects		2305 Kline Ave, Suite 200 Nashville, TN 37211

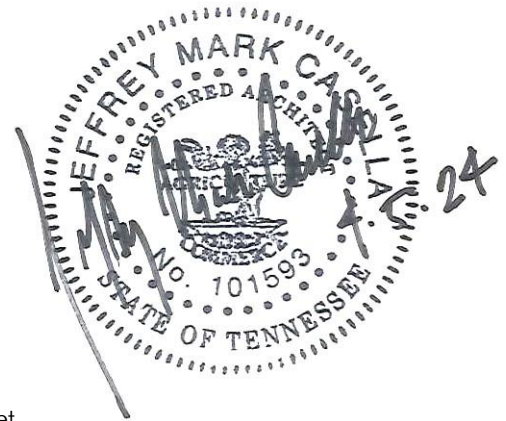
The original Contract Documents dated 03.08.24, and related addenda for the above-mentioned project are hereby amended. The work reflected in this addendum is to be incorporated into the proposed Contract Sum and Time as if originally issued.

This addendum consists of this **4 page summary outline and the following attachments (12 total pages):**

- Project Manual - Section 144200 – Wheelchair Lifts (entire section, 5 pages)
- Drawing - ID1.0 – Interior Finish Listing and Notes (30"x42" format, 1 sheet)
- Drawing - ID1.1 – Interior Finish Plan and Schedule-Level 1 & Level 2 (30"x42" format, 1 sheet)
- Drawing - ID1.2 – Interior Finish Plan and Schedule-Level 3 & Level 4 (30"x42" format, 1 sheet)

The Addendum is organized into the following three parts:

- PART I: CLARIFICATIONS
- PART II: PROJECT MANUAL REVISION SUMMARY
- PART III: DRAWING REVISION SUMMARY



**PART I – CLARIFICATIONS:**

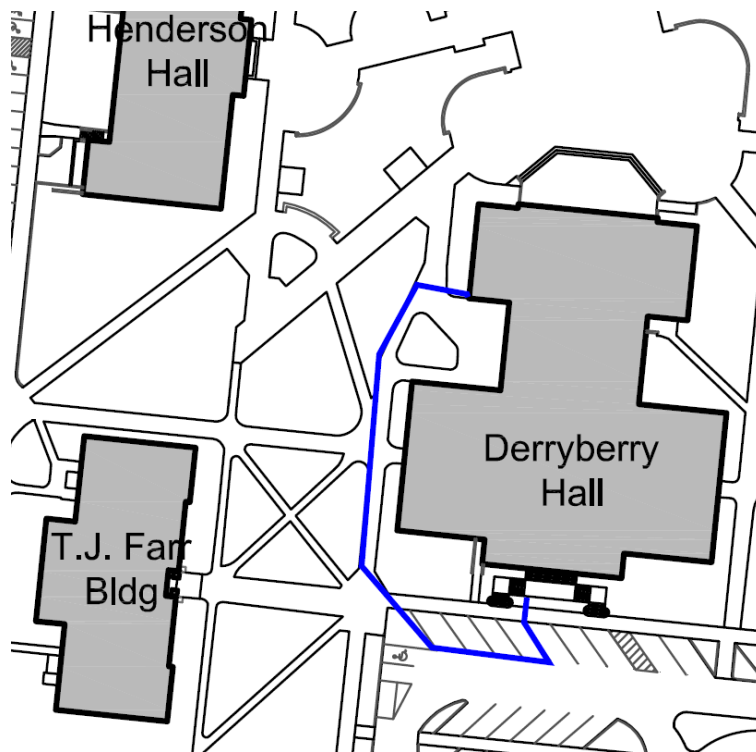
- 1) The following error occurred on the previous Addendum-001 coversheet.
  - a) On the previously issued Addendum-001 coversheet, the reference date of the original Contract Documents was noted as 05.26.23. This was an error. The original Contract Documents were dated 03.08.24, as noted similarly above on this coversheet.
- 2) The following are responses to questions provided by bidders:
  - a) *Question: Should the bid bond be addressed to TTU or the State of Tennessee?*  
**Response: The Owner for this purpose is Tennessee Tech University and the address should be 220 W. 10<sup>th</sup> Street, Cookeville, TN 38501.**
  - b) *Question: A limited asbestos survey was provided that encompasses the entire building in the specifications. On TTU projects we typically see a site-specific asbestos abatement specification*

usually by Terracon to clarify and identify the specific locations of asbestos containing materials as it pertains to this project. We have had request from several asbestos subcontractors for this information. Will this be provided so that we can give the asbestos subcontractors a scope of work?

**Response:** A project specific asbestos report has been ordered by the owner. This report will be distributed to the bidders when it is available. The process will require a rescheduling of the bid date (noted in the Project Manual – Revision Summary below).

- c) *Question:* Do you have a sketch of the approved fence and staging/parking area that we can share with fencing subcontractors for pricing?

**Response:** Below is a very general site plan depicting a conceptual construction staging/parking zone that can be fenced (represented in “blue”). Please note that the west side of the double front entry stairs will need to be closed off in this scenario. The exact configuration may be adjusted slightly to accommodate the contractors anticipated needs, as long as these adjustments are coordinated with TTU.



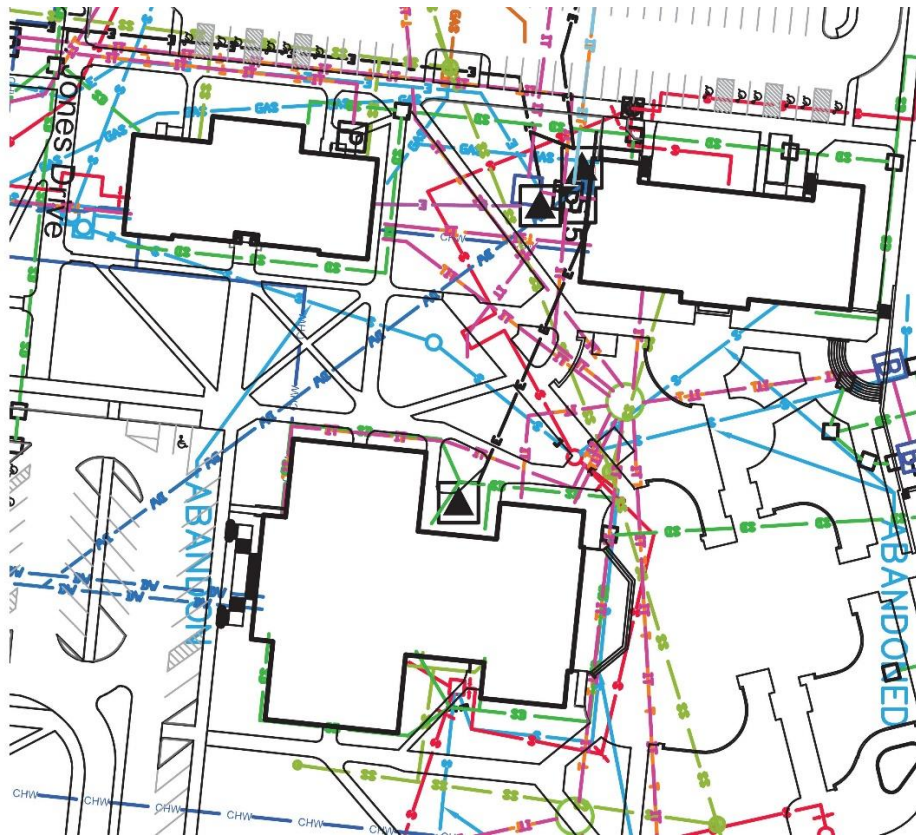
- d) *Question:* If we utilize the west side of the building as a construction entrance, will we be permitted to patch and repair only the damaged areas (e.g., sidewalk, turf, landscaping, planters, pavement) without the obligation to extend repairs further, considering the inevitable imperfect match of patched surfaces?

**Response:** Yes, only damaged surface areas will be required to be replaced. Replacement of hard surfaces should extend to an existing seam or other such “natural” breakpoint. It is understood that new concrete surfaces will look different than existing. Any damaged planters should be replaced with

the best match to the existing planters. If damage is anticipated, planters may be dismantled and stored for reinstallation or temporarily relocated (per TTU's approved guidance).

- e) Question: Are there any shallow underground lines on the west side of the building that could potentially be damaged by equipment during construction activities?

Response: Below is a low-resolution snapshot representing the general locations and types of underground lines. This may not include all the actual underground conditions. The depths of these items are unknown. TTU will provide the contractor with a higher resolution document when construction commences to help assist in avoiding any potential site conflicts.



- f) Question: Can we remove and replace the large tree and brick planter obstructing three windows on the west side of the building to facilitate removal of demolished materials and for access/delivery of new materials?

Response: No, this tree must remain and be protected.

## PART II – PROJECT MANUAL – REVISION SUMMARY:

1. 001116 – Invitation to Bid
  - a. Under “Bids Received At:” Change the **Bid Date** from April 10, 2024 to **April 24, 2024**. The time and location are the same.
  - b. This date is being changed to provide additional time for TTU to obtain a project specific asbestos report & for the bidders to properly review the report before the bid date.
2. 144200 – Wheelchair Lifts
  - a. Replace the entire current section with the attached section. The original specification for an “Unenclosed” self-contained vertical platform wheelchair lift was updated to be an “Enclosed” version.

## PART III – DRAWING – REVISION SUMMARY:

1. A5.1 – DETAILS
  - a. Detail #10: In lieu of painting all the existing coffer beams and ceiling recesses PT-2 (white); paint only the undersides of the coffer beams and the bottom half of the coffer beam sidewalls PT-2 (white), and then paint the remaining top half of the sidewalls of the coffer beams and the recessed coffer ceilings areas flat black (at least 2’ over from the sidewalls). Note that there is no attached detail as part of this Addendum depicting this specific modification. Detail 10/A5.1 was referenced in this description to best communicate the revision.
2. ID1.0 – Interior Finish Listing and Notes
  - a. Specific Finish Note #7: Clarification note added.
  - b. Interior Finish Legend: The last three digits of CPT-1 Strikeoff # changed from “100” to “110”
  - c. Interior Finish Legend: PL-1 contact, product, and finish information updated.
3. ID1.1 – Interior Finish Plan and Schedule-Level 1 & Level 2
  - a. Specific Finish Note #7: Clarification note added.
4. ID1.2 – Interior Finish Plan and Schedule-Level 3 & Level 4
  - a. Specific Finish Note #7: Clarification note added.

-End of Addendum Summary Outline-

WHEELCHAIR LIFT

Addendum #2  
04.05.24

PART 1 - GENERAL

1.1 SECTION INCLUDES

- A. Unenclosed, self-contained vertical platform wheelchair lift.

1.2 SUBMITTALS

- A. Submit under provisions of Division 1.
  - 1. Product Data: Manufacturer's data sheets on each product to be used, including:
  - 2. Submit manufacturer's installation instructions, including preparation, storage and handling requirements.
  - 3. Include complete description of performance and operating characteristics.
- B. Shop Drawings:
  - 1. Show typical details of assembly, erection and anchorage.
  - 2. Include wiring diagrams for power, control, and signal systems.
  - 3. Show complete layout and location of equipment, including required clearances and coordination with shaftway.
- C. Selection Samples: For each finished product specified, provide two complete sets of color chips representing manufacturer's full range of available colors and patterns.
- D. Verification Samples: For each finished product specified, two samples, minimum size 1-3/4" x 2-1/4", representing actual product, color, and patterns.
- E. Manufacturer Qualifications: Firm with minimum 20 years' experience in manufacturing of vertical platform wheelchair lifts, with evidence of experience with similar installations of type specified.
- F. Installer Qualifications: Licensed to install equipment of this scope, with evidence of experience with specified equipment. Installer shall maintain an adequate stock of replacement parts, have qualified people available to ensure fulfillment of maintenance and callback service without unreasonable loss of time in reaching project site.

1.3 REGULATORY REQUIREMENTS

- A. Provide platform lifts in compliance with:
  - 1. ASME A18.1 - Safety Standard for Platform Lifts and Stairway Chairlifts.
  - 2. ASME A17.1 - Safety Code for Elevators and Escalators.

## WHEELCHAIR LIFTS 144200-2

TTU Derryberry Hall Upgrades - Phase I  
SBC# 364/011-05-2021 GMCa # 202113 TDH  
Gilbert | McLaughlin | Casella

Revised 04-05-2024 (See underlines and strike-throughs)

3. ASME A17.5 - Elevator and Escalator Electrical Equipment.
4. NFPA 70 - National Electric Code.

### 1.4 DELIVERY, STORAGE, AND HANDLING

- A. Store products in manufacturer's unopened packaging until ready for installation.
- B. Store components off the ground in a dry covered area, protected from adverse weather conditions.

### 1.5 PROJECT CONDITIONS

- A. Do not use wheelchair lift for hoisting materials or personnel during construction period.

### 1.6 WARRANTY

- A. Extended Warranty: Provide an extended manufacturer's warranty for the entire warranty period covering the wheelchair lift materials and factory workmanship for the following additional extended period beyond the initial one-year warranty. Preventive Maintenance agreement required.
  1. Five additional years.

## PART 2 - PRODUCTS

### 2.1 ~~UNENCLOSED~~ ENCLOSED VERTICAL WHEELCHAIR LIFT

Addendum #2  
04.05.24

- A. Subject to requirements of this project provide products by one of the following:
  1. Garaventa Lift; www.garaventalift.com (Design Basis)
  2. Ascension Lift
  3. Lifeway Mobility
- B. Description
  1. Design Basis: Model GVL-EN-42 ~~GVL-OP-42~~ by Garaventa
  2. Capacity: 750 lbs (340 kg) rated capacity.
  3. Mast Height: 45 inches (1143 mm) maximum lifting height
  4. ~~Platform Size and Nominal Clear Platform Dimensions: 36 inches (914 mm) by 48-7/8 inches (1242 mm) clear platform dimensions.~~
  5. Nominal Clear Platform Dimensions: Standard: 37-1/4 inches (947 mm) by 54 inches (1370 mm)
  6. Platform Configuration: Straight Through Entry/Exit: Front and rear openings.
  7. Landing Openings Door/Gate ~~Gates: Self closing type.~~

## WHEELCHAIR LIFTS 144200-3

TTU Derryberry Hall Upgrades - Phase I  
SBC# 364/011-05-2021 GMCa # 202113 TDH  
Gilbert | McLaughlin | Casella  
Revised 04-05-2024 (See underlines and strike-throughs)

Addendum #2  
04.05.24

- a. Lower Landing Door Height: Flush mount, 80 inches (2032 mm)
- b. Upper Landing Gate Height: 42-1/8 inches (1070 mm).
8. Door Construction: Aluminum frame with:
  - a. Panels of 16 gauge (1.5 mm) painted galvanized steel.
  - b. Panels of 3/16 inch (5 mm) bronze Plexiglas with 16 gauge (1.5 mm) galvanized steel kick plate.
  - c. D-Handle Pull: 12 inch (305 mm) offset D-Handle.
  - ~~d. Platform Gate: Travels with platform and opens at lower landing.~~
  - e. Upper Landing Gate: Installed at upper landing.
9. Power Door/Gate Operator
  - a. Location: As indicated on Drawings
  - b. Automatically opens the gate when platform arrives at a landing. Will also open at landing by pressing call button.
  - c. ADA Compliant and obstruction sensitive.
  - d. Low voltage, 24 VDC with all wiring concealed.
10. Lift Components
  - a. Machine Tower: Aluminum extrusion.
  - b. Base Frame: Structural steel.
  - c. Platform Side Wall Panels: 16 gauge (1.5 mm) galvanized steel sheet.
  - d. Enclosure Panels: 3/16 inch (5 mm) smoked grey Plexiglas, height 42-1/8 inches (1070 mm) above the upper landing level.
  - ~~e. Platform Access Ramp: 12 16 gauge (2.5 mm) galvanized steel plates; slip resistant surfaces.~~
  - ~~f. Ramp: Stationary type.~~
- ~~11. Side Guard Panels: 42 1/8 inches (1070 mm) high mounted on platform.~~
12. Infill Panel Kit: Provide 16 gauge (1.5 mm) galvanized panels and mounting hardware to cover void between side of enclosure, drive mast and adjacent wall at the following locations: Lower landing.
13. Base Mounting at Lower Landing
  - a. Floor Mount: Base of lift shall be mounted on the floor surface of the lower landing. For access onto the platform provide a ramp of 16 gauge (1.5 mm) galvanized steel sheet with a slip resistant surface.
14. Leadscrew Drive
  - a. Drive Type: Self-lubricating acme screw drive.
  - b. Emergency Operation: Manual handwheel device to raise or lower platform.
  - c. Battery Powered Emergency Lowering: Battery powered platform lowering device that automatically activates in the event of power failure. Allows passenger to drive platform downward to lower landing. Does not operate lift in up direction.
  - d. Safety Devices
    - 1) Integral safety nut assembly with safety switch.
  - e. Travel Speed: 10 fpm (3.0 m/minute).
  - f. Motor: 2.0 hp (560 W).
  - g. Power Supply
  - h. 120 VAC single phase; 60 Hz on a dedicated 20-amp circuit.

## **WHEELCHAIR LIFTS 144200-4**

TTU Derryberry Hall Upgrades - Phase I  
SBC# 364/011-05-2021 GMCa # 202113 TDH  
Gilbert | McLaughlin | Casella

Revised 04-05-2024 (See underlines and strike-throughs)

15. Platform Controls: 24 VDC control circuit with the following features.
  - a. Direction Control: Continuous pressure rocker switch.
  - b. Illuminated and audible emergency stop switch shuts off power to lift and activates audio alarm with battery backup.
  - c. Keyless operation.
16. Call Station Controls: 24 VDC control circuit with the following features.
  - a. Direction Control: Continuous pressure rocker switch.
  - b. Keyless operation.
17. Call Station Mounting
  - a. Lower: Wall mounted surface.
  - b. Upper: Wall mounted surface.
18. Safety Devices and Features
  - a. Grounded electrical system with upper, lower, and final limit switches.
  - b. Tamper resistant interlock to electrically monitor that the gate is in the closed position and the lock is engaged before lift can move from landing.
19. Finishes
  - a. Extruded aluminum electrostatically applied baked powder finish, of color selected by Architect from standard manufacturer options.

### **PART 3 - EXECUTION**

#### **3.1 EXAMINATION**

- A. Do not begin installation until substrates have been properly prepared.
- B. Verify shaft and machine space are of correct size and within tolerances.
- C. Verify required landings and openings are of correct size and within tolerances.
- D. Verify electrical rough-in is at correct location.
- E. If substrate preparation is the responsibility of another installer, notify Architect of unsatisfactory preparation before proceeding.

#### **3.2 PREPARATION**

- A. Clean surfaces thoroughly prior to installation.
- B. Prepare surfaces using the methods recommended by the manufacturer for achieving the best result for the substrate under the project conditions.



## **WHEELCHAIR LIFTS 144200-5**

TTU Derryberry Hall Upgrades - Phase I  
SBC# 364/011-05-2021 GMCa # 202113 TDH  
Gilbert | McLaughlin | Casella

Revised 04-05-2024 (See underlines and strike-throughs)

### 3.3 INSTALLATION

- A. Install platform lifts in accordance with applicable regulatory requirements including ASME A17.1, ASME A18.1 and the manufacturer's instructions.
- B. Install system components and connect to building utilities.
- C. Accommodate equipment in space indicated.
- D. Startup equipment in accordance with manufacturer's instructions.
- E. Adjust for smooth operation.

### 3.4 FIELD QUALITY CONTROL

- A. Perform tests in compliance with ASME A17.1 or A18.1 and as required by authorities having jurisdiction.
- B. Schedule tests with agencies and Architect, Owner, and Contractor present.

### 3.5 PROTECTION

- A. Protect installed products until completion of project.
- B. Touch-up, repair or replace damaged products before Substantial Completion.

END OF SECTION

**INTERIOR FINISH SYMBOLS**

ACT	ACOUSTICAL CEILING TILE
AP	ACOUSTICAL PANEL
CONC	SEALED CONCRETE
CPT	CARPET
EF	EPOXY FLOORING
ETR	EXISTING TO REMAIN
PL	PLASTIC LAMINATE
PT	PAINT
RB	RUBBER BASE
WB	WOOD BASE
WD	WOOD
PT	EXTENT OF FINISH
CPT	FLOORING
EF	TRANSITION

**INTERIOR FINISH LEGEND / BASIS OF DESIGN FINISHES**

ACT-1	NOTE:	EXISTING ACT & GRID TO BE REMOVED & REINSTALLED OR REPLACED TO MATCH EXIST.
AP-1	MFG: SIZE: NOTE:	KNOLL, TWISTER, FLURRY W1923/2 66" WIDE CEILING PANEL WRAP
CONC		SEALED CONCRETE
CPT-1	MFG: CONTACT:	TARKETT KIM FULTON 615.393.4054
ADD-002	PRODUCT: COLOR: STRIKEOFF #: TYPE: SIZE: INSTALLATION:	AIDA CLOTH CUSTOM COLOR 114349112-110 TILE 18 x 36 VERTICAL ASHLAR
CPT-2	MFG: NOTE:	PATCRAFT OWNER PROVIDED, CONTRACTOR INSTALLED
	PRODUCT: COLOR: TYPE: SIZE: INSTALLATION:	DAZZLE I0119 EXQUISITE 00512 TILE 24 X 24 (MATCH EXISTING METHOD)
EF-1	MFG: PRODUCT: COLOR: FINISH: NOTE:	STONHARD STONCRETE EFX URBAN SCAPE STONE MATTE STONECLAD TO PATCH EXISTING CONC FLOOR WITH EPOXY AS TOP COAT
ADD-002	PL-1	MFG: CONTACT: PRODUCT: FINISH:
		FORMICA AMBER VEACH (615) 793-7746 NATURAL TEAK 8849-58 MATTE
PT-1	MFG: COLOR:	SHERWIN WILLIAMS PURE WHITE SW 7005
PT-2	MFG: COLOR:	SHERWIN WILLIAMS HIGH REFLECTIVE WHITE SW 7757
PT-3	MFG: COLOR:	SHERWIN WILLIAMS EGRET WHITE SW 7570
PT-4	MFG: COLOR:	SHERWIN WILLIAMS CITYSCAPE SW 7067
PT-5	NOTE:	MATCH EXISTING COLOR & FINISH.
PT-6	MFG: COLOR:	SHERWIN WILLIAMS TRICORN BLACK SW 6258
PT-7	NOTE: COLOR:	STAGE FRONT & RECESSED LETTERS. TBD
RB-1	MFG: NOTE:	TARKETT MATCH COLOR & PROFILE OF ADJACENT EXISTING RB
RB-2	MFG: COLOR:	TARKETT 20 CHARCOAL
VCT-1	MFG: PRODUCT: COLOR: INSTALLATION:	ARMSTRONG IMPERIAL TEXTURE 51910 CLASSIC BLACK MATCH EXISTING METHOD
WB-1	NOTE:	PAINT EXIST. WD BASE PT-3
WD-1	NOTE: SPECIES:	STAIN TO MATCH ARCH. SAMPLE MAPLE
WD-2	NOTE:	NOT USED
WD-3	NOTE: SPECIES:	NEW PAINTED WOOD PANEL, TRIM, BASE, & TRIM AT CEILING UNDERNEATH BALCONY. PAINT COLOR TO BE PT-3. (SEE ARCH. DRAWINGS FOR EXTENTS) (TO MATCH EXISTING)
WD-4	NOTE:	SAND EXIST. WOOD FLOORS AND PAINT PT-6

**GENERAL FINISH NOTES**

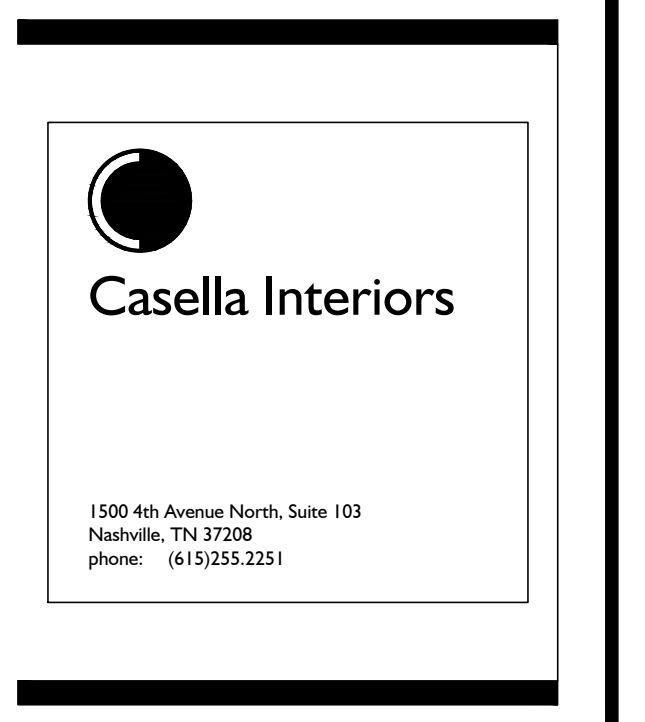
- ALL FINISHES LISTED ARE BASIS OF DESIGN. ANY SUBSTITUTIONS MUST BE EQUAL IN COLOR, PATTERN, MATERIAL, YARN TYPE (WHERE APPLICABLE), & DURABILITY. SUBSTITUTIONS MUST BE SUBMITTED TO DESIGN TEAM FOR APPROVAL.
- DO NOT SCALE DRAWINGS.
- REFER TO FINISH LEGEND FOR SYMBOL DEFINITIONS.
- SUBMIT SAMPLES OF ALL FINISHES TO INTERIOR DESIGNER FOR APPROVAL BEFORE INSTALLATION OR FABRICATION.
- REFER TO ELEVATIONS, REFLECTED CEILING PLANS AND ENLARGED PLANS FOR CLARIFICATION OF FINISHES.
- ALL FINISHES TO BE INSTALLED PER MANUFACTURER'S SPECIFICATIONS.
- ALL GYPSUM BOARD OR EXISTING PLASTER WALLS SCHEDULED TO BE PAINTED ARE TO HAVE AN EGGSHELL LOW VOC FINISH.
- ALL GYPSUM BOARD OR EXISTING PLASTER CEILINGS SCHEDULED TO BE PAINTED ARE TO HAVE A FLAT LOW VOC FINISH.
- PATCH, REPAIR, OR MATCH EXISTING MATERIALS WHERE AFFECTED BY CONSTRUCTION.
- ALL DOORS & DOOR FRAMES TO BE PAINTED TO MATCH ADJACENT WALL, UNLESS OTHERWISE NOTED.

**SPECIFIC FINISH NOTES**

- TABLE TOP TO BE PL-1. EDGE PROFILE: STRAIGHT. METAL SUPPORT FRAME TO BE PAINTED PT-4, HIGH-GLOSS FINISH.
- PAINT HANDRAIL & GUARDRAIL AGAINST PAINTED WD WALLS PT-3, HIGH-GLOSS FINISH. PAINT ALL OTHER HANDRAILS & GUARDRAILS PT-4, HIGH-GLOSS FINISH.
- SEATING BASIS OF DESIGN TO BE IRWIN - ANDANTE. (SEE PROJECT MANUAL FOR APPROVED MANUF. TO PROVIDE EQUAL PRODUCT).
  - BACK: NO. 6 (NO.17 INDIA TEAK ON MAPLE, FABRIC: STINSON, ARTISAN, COLOR: VIOLET 65081)
  - SEAT: NO. 12 (FINISH: CHARCOAL GREY (CHL), FABRIC: STINSON, ARTISAN, COLOR: VIOLET 65081) w/ SEAT NUMBER PLATE (FINISH TBD).
  - ISLE PANEL: NO. 14 (NO.17 INDIA TEAK ON MAPLE) w/ ROW LETTER PLATE (FINISH TBD).
  - ARMREST: COMFORT-CURVED WOOD (FINISH: NO.17 INDIA TEAK ON MAPLE)
  - SEE ARCH. DRAWINGS FOR CONFIGURATION, SEAT COUNTS, AND WIDTHS.
  - CHAIR PLATFORMS: NO. 4 (FINISH: CHARCOAL GREY (CHL)).
  - PROVIDE BUILT-IN LED LIGHTING AT SIDE PANELS WHERE NOTED IN THE ARCH. DRAWINGS.
- COLOR OF NEW STAGE TRAVELER CURTAIN & VALANCE TO BE BLACK. (EXISTING REAR BLACK CURTAINS TO REMAIN). SEE PROJECT MANUAL & ARCH. DRAWINGS FOR ADDITIONAL DETAILS.
- MOTORIZED WINDOW SHADE WITH BLACK OUT FABRIC AND LIGHT FILTER SHADE, SIDE CHANNELS AND PRE-FINISHED METAL HOUSING. BLACK OUT FABRIC TO BE TBD. LIGHT FILTER FABRIC TBD. METAL HOUSING FINISH TO MATCH THE ADJACENT PAINTED WOOD WINDOW TRIM.
- STAGE NOSING, TRIM, LIGHT COVE TRIM, FACE OF STAGE BASE, STAGE STAIR TREADS & RISERS TO BE WD-1. PROVIDE CAT STAINLESS STEEL STAIR INSERT PLATES (FPSS 10x3) AS INLAY AT STAIR TREAD NOSING. (SEE ARCH. DRAWINGS FOR DETAILS).
- PROVIDE TARKETT SLN STAIR NOSING AT BALCONY STAIRS. COLOR: 40 BLACK. AT 12"D STEP, MITER SLN NOSING. AT 24"D STEP, CLEANLY CUT SLN NOSING TO TERMINATE AT SPECIFIC NOTE #8 TRANSITION. RUN SPECIFIC NOTE #8 TRANSITION CONTINUOUSLY AT ANY OTHER EXPOSED EDGE OF CPT, TREADS AND RISERS TO HAVE CPT-1. (REVIEW THESE STAIR NOSINGS & TRANSITIONS W/ INTERIOR DESIGNER PRIOR TO FABRICATION).
- PROVIDE TARKETT SLIM LINE TRANSITION STRIP FROM CPT TO EF/CONC. COLOR: 20 CHARCOAL
- PROVIDE TARKETT SLIM LINE TRANSITION FROM CPT TO EXISTING VCT FLOORING. COLOR: 20 CHARCOAL
- AT CORRIDOR OR STAIRWELL SIDE, PAINT NEW WOOD OR NEW HM DOORS & NEW DOOR TRIM OR HM FRAMES. PAINT (CORNER TO CORNER) NEW OR PATCHED WALLS TO MATCH EXISTING ADJACENT WALLS. INSTALL NEW WALL BASES AT PATCHED OR NEW WALLS (CORNER TO CORNER) TO MATCH EXISTING WALL BASE. (SEE ALSO: ALTERNATE #1)
- AT MAIN AUDITORIUM COFFERED CEILING, PAINT EXISTING PLASTER COFFERS & BEAMS PT-2. INSTALL FLOATING ACOUSTICAL CLOUD SYSTEMS WITHIN THE COFFERS. SUSPENDED CLOUD PANELS TO BE WRAPPED WITH AP-1. (SEE RCP FOR DETAILS).
- AT CEILING BELOW THE BALCONY, REMOVE EXISTING PLASTER & INSTALL NEW GYP. BOARD (SEE ARCH DRAWINGS FOR DETAILS). PAINT GYP. BOARD PT-3.
- AT ANY DAMAGED OR NEW WALLS, ADD NEW BASE & PAINT CORNER TO CORNER, COLOR TO MATCH EXISTING.
- AT ANY DAMAGED OR NEW CEILINGS, PAINT FULL FACE, COLOR TO MATCH EXISTING.
- THE EXTENT OF NEW FINISHES IN STAGE 264 ARE LIMITED TO THE PROSCENIUM SURROUND, STAGE NOSING, REPLACEMENT OF THE FRONT PORTION OF STAGE FLOORING, REPLACEMENT OF MAIN PROSCENIUM GRAND TRAVELER & VALENCE, AND THE INSTALLATION OF A NEW MID-STAGE TRAVELER. SEE ARCHITECT FOR FURTHER CLARIFICATION OF EXTENTS.
- BENCH & BACK SUPPORT TO BE WD-1 W/ FABRIC WRAPPED CUSHIONS. CUSHION FABRIC TO MATCH AUDIENCE SEATING FABRIC.
- CPT-1 IN VESTIBULE 252A TO RUN UNDERNEATH LIP OF LIFT RAMP TO ENSURE SMOOTH TRANSITION. FLOOR OF LIFT TO HAVE CPT-1.
- INDICATED EXTENTS OF STAGE FRONT. STAGE FRONT WILL BE STAINED WOOD BASE/TRIM & VENEER PLYWOOD (WD-1) OVER MULTIPLE LAYERS OF MDF BOARDS. THE RECESSED PORTIONS OF THE CUT-OUT AREAS OF THE LETTERING WILL BE PAINTED (BACK AND CUT-OUT SIDE).
- GIVEN DIMENSION AND BOUNDARY CURVE ARE APPROXIMATE. EXACT LOCATION OF ARC TO BE COORDINATED W/ ARCHITECT AND APPROVED SEATING LAYOUT BEFORE INSTALLATION OF ANY FLOOR FINISH MATERIALS. (LOCATION & RADIUS OF ARC TO BE BASED UPON THE ARC TO BE BASED OFF THE LOCATION & RADIUS OF SEATING ARRANGEMENT).
- PAINT EXISTING WOOD PANELS, TRIM, & BASE PT-3.
- ALL RISER FACES ADJACENT TO CPT-1 ARE TO HAVE CPT-1. ALL OTHER RISER FACES ARE TO HAVE EF-1.

TENNESSEE TECH UNIVERSITY  
**DERRYBERRY HALL**  
 BUILDING UPGRADES - PHASE I  
 1 WILLIAM L. JONES DRIVE  
 COOKEVILLE, TN 38505

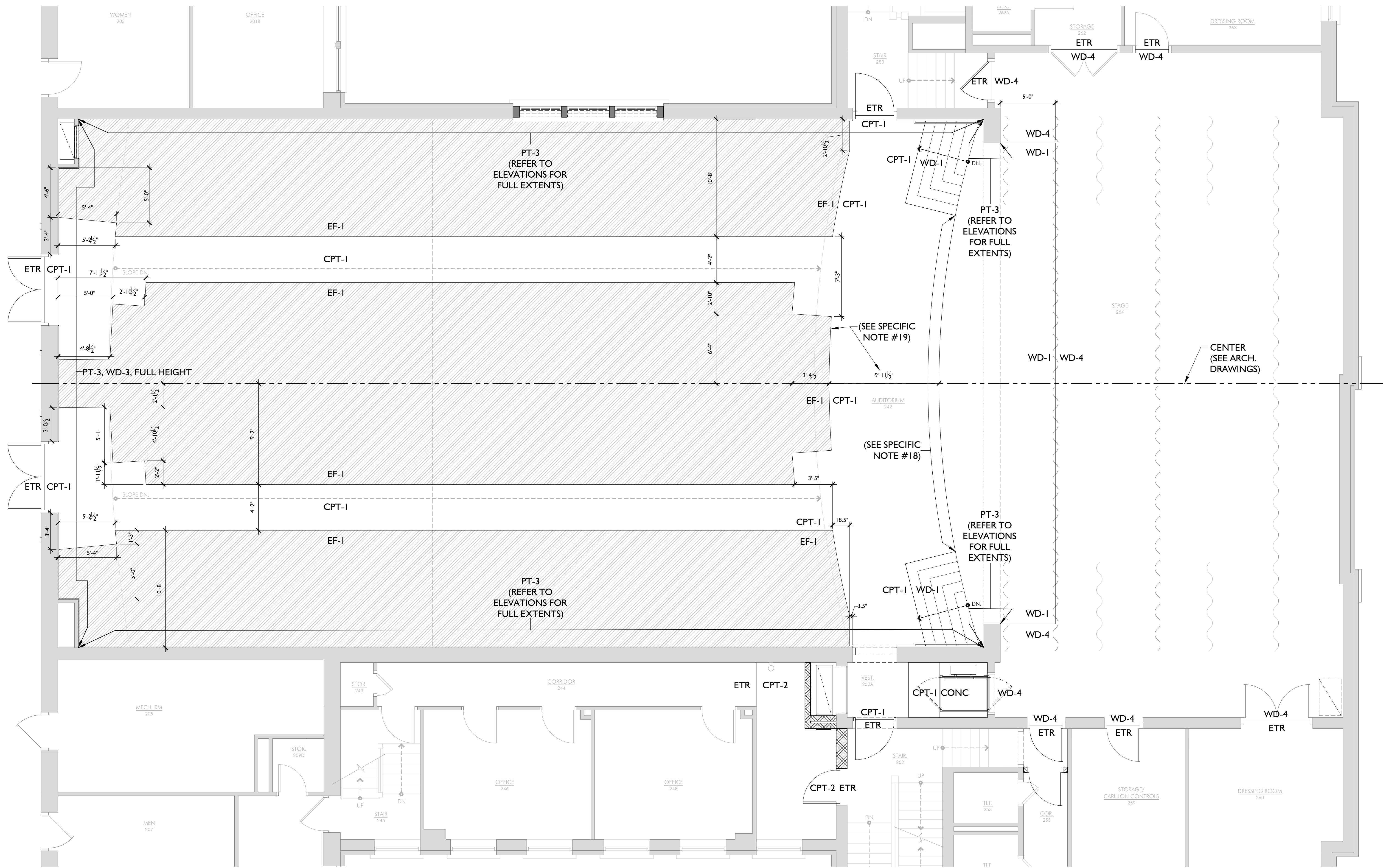
GILBERT | M c L A U G H L I N | C A S E L L A  
 Architects  
 2305 Kline Avenue, Suite 200, Nashville, TN 37211  
 615.322.9649  
 911m.c.c.o.m



ISSUED: 03.08.24  
 SBC PROJECT #: 364/011-05-2021  
 GMCA PROJECT #: 202113 TDH

#	DATE	DESCRIPTION
ADD-002	04.05.24	Addendum #2

INTERIOR FINISH LISTING AND NOTES

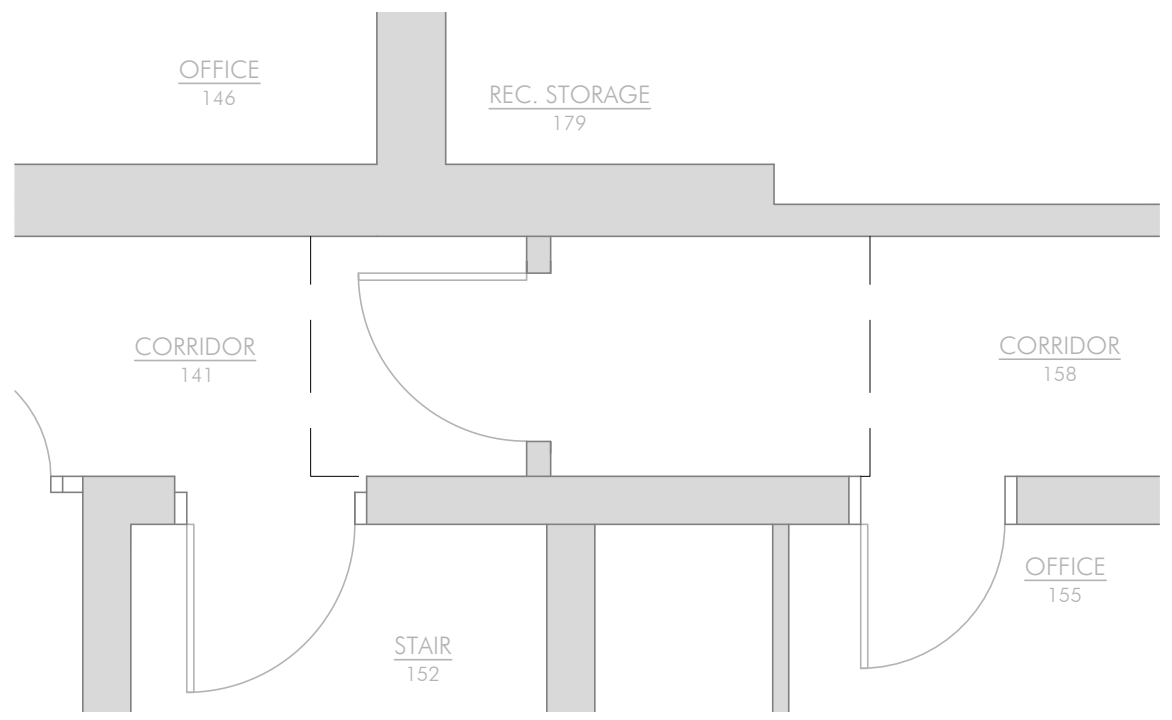


- SPECIFIC FINISH NOTES**
- TABLE TOP TO BE FL-1, EDGE PROFILE: STRAIGHT. METAL SUPPORT FRAME TO BE PAINTED PT-4, HIGH-GLOSS FINISH.
  - PAINT HANDRAIL & GUARDRAIL AGAINST PAINTED WD WALLS PT-3, HIGH-GLOSS FINISH. PAINT ALL OTHER HANDRAILS & GUARDRAILS PT-4, HIGH-GLOSS FINISH.
  - SEATING BASIS OF DESIGN TO BE IRWIN - ANDANTE. (SEE PROJECT MANUAL FOR APPROVED MANUF. TO PROVIDE EQUAL PRODUCT).
    - BACK: NO. 6 (NO. 17 INDIA TEAK ON MAPLE, FABRIC: STINSON, ARTISAN, COLOR: VIOLET 65081)
    - SEAT: NO. 12 (FINISH: CHARCOAL GREY (CHL), FABRIC: STINSON, ARTISAN, COLOR: VIOLET 65081) w/ SEAT NUMBER PLATE (FINISH TBD).
    - aisle PANEL: NO. 14 (NO. 17 INDIA TEAK ON MAPLE) w/ ROW LETTER PLATE (FINISH TBD).
    - ARMREST: COMFORT-CURVED WOOD (FINISH: NO. 17 INDIA TEAK ON MAPLE)
    - SEE ARCH. DRAWINGS FOR CONFIGURATION, SEAT COUNTS, AND WIDTHS.
    - CHAIR PLATFORMS: NO. 4 (FINISH: CHARCOAL GREY (CHL)).
    - PROVIDE BUILT-IN LED LIGHTING AT SIDE PANELS WHERE NOTED IN THE ARCH. DRAWINGS.
  - COLOR OF NEW STAGE TRAVELER CURTAIN & VALANCE TO BE BLACK. (EXISTING REAR BLACK CURTAINS TO REMAIN). SEE PROJECT MANUAL & ARCH. DRAWINGS FOR ADDITIONAL DETAILS.
  - MOTORIZED WINDOW SHADE WITH BLACK OUT FABRIC AND LIGHT FILTER SHADE, SIDE CHANNELS AND PRE-FINISHED METAL HOUSING. BLACK OUT FABRIC TO BE TBD. LIGHT FILTER FABRIC TBD. METAL HOUSING FINISH TO MATCH THE ADJACENT PAINTED WOOD WINDOW TRIM.
  - STAGE NOSING, TRIM, LIGHT COVE TRIM, FACE OF STAGE BASE, STAGE STAIR TREADS & RISERS TO BE WD-1. PROVIDE CAT STAINLESS STEEL STAIR INSERT PLATES (FPS3 10x3) AS INLAY AT STAIR TREAD NOSING. (SEE ARCH. DRAWINGS FOR DETAILS).
  - PROVIDE TARKETT SLN STAIR NOSING AT BALCONY STAIRS. COLOR: 40 BLACK. AT 12"D STEP, MITER SLN NOSING. AT 24"D STEP, CLEANLY CUT SLN NOSING TO TERMINATE AT SPECIFIC NOTE #8 TRANSITION. RUN SPECIFIC NOTE #8 TRANSITION CONTINUOUSLY AT ANY OTHER EXPOSED EDGE OF CPT, TREADS AND RISERS TO HAVE CPT-1. (REVIEW THESE STAIR NOSINGS & TRANSITIONS W/ INTERIOR DESIGNER PRIOR TO FABRICATION).
  - PROVIDE TARKETT SLIM LINE TRANSITION STRIP FROM CPT TO EF/CONC. COLOR: 20 CHARCOAL
  - PROVIDE TARKETT SLIM LINE TRANSITION FROM CPT TO EXISTING VCT FLOORING. COLOR: 20 CHARCOAL
  - AT CORRIDOR OR STAIRWELL SIDE, PAINT NEW WOOD OR NEW HM DOORS & NEW DOOR TRIM OR HM FRAMES. PAINT (CORNER TO CORNER) NEW OR PATCHED WALLS TO MATCH EXISTING ADJACENT WALLS. INSTALL NEW WALL BASES AT PATCHED OR NEW WALLS (CORNER TO CORNER) TO MATCH EXISTING WALL BASE. (SEE ALSO: ALTERNATE #1)
  - AT MAIN AUDITORIUM COFFERED CEILING, PAINT EXISTING PLASTER COFFERS & BEAMS PT-2. INSTALL FLOATING ACOUSTICAL CLOUD SYSTEMS WITHIN THE COFFERS. SUSPENDED CLOUD PANELS TO BE WRAPPED WITH AP-1. (SEE RCP FOR DETAILS).
  - AT CEILING BELOW THE BALCONY, REMOVE EXISTING PLASTER & INSTALL NEW GYP. BOARD (SEE ARCH DRAWINGS FOR DETAILS). PAINT GYP. BOARD PT-3.
  - AT ANY DAMAGED OR NEW WALLS, ADD NEW BASE & PAINT CORNER TO CORNER. COLOR TO MATCH EXISTING.
  - AT ANY DAMAGED OR NEW CEILINGS, PAINT FULL FACE. COLOR TO MATCH EXISTING.
  - THE EXTENT OF NEW FINISHES IN STAGE 264 ARE LIMITED TO THE PROSCENIUM SURROUND, STAGE NOSING, REPLACEMENT OF THE FRONT PORTION OF STAGE FLOORING, REPLACEMENT OF MAIN PROSCENIUM GRAND TRAVELER & VALENCE, AND THE INSTALLATION OF A NEW MID-STAGE TRAVELER. SEE ARCHITECT FOR FURTHER CLARIFICATION OF EXTENTS.
  - BENCH & BACK SUPPORT TO BE WD-1 W/ FABRIC WRAPPED CUSHIONS. CUSHION FABRIC TO MATCH AUDIENCE SEATING FABRIC.
  - CPT-1 IN VESTIBULE 252A TO RUN UNDERNEATH LIP OF LIFT RAMP TO ENSURE SMOOTH TRANSITION. FLOOR OF LIFT TO HAVE CPT-1.
  - INDICATED EXTENTS OF STAGE FRONT. STAGE FRONT WILL BE STAINED WOOD BASE/TRIM & VENEER PLYWOOD (WD-1) OVER MULTIPLE LAYERS OF HDF BOARDS. THE RECESSED PORTIONS OF THE CUT-OUT AREAS OF THE LETTERING WILL BE PAINTED (BACK AND CUT-OUT SIDE).
  - GIVEN DIMENSION AND BOUNDARY CURVE ARE APPROXIMATE. EXACT LOCATION OF ARC TO BE COORDINATED W/ ARCHITECT AND APPROVED SEATING LAYOUT BEFORE INSTALLATION OF ANY FLOOR FINISH MATERIALS. (LOCATION & RADIUS OF ARC TO BE BASED UPON THE ARC TO BE BASED OFF THE LOCATION & RADIUS OF SEATING ARRANGEMENT).
  - PAINT EXISTING WOOD PANELS, TRIM, & BASE PT-3.
  - ALL RISER FACES ADJACENT TO CPT-1 ARE TO HAVE CPT-1. ALL OTHER RISER FACES ARE TO HAVE EF-1.

**2 FINISH PLAN - LEVEL 2**  
SCALE: 1/4" = 1'-0"

FINISH SCHEDULE - LEVEL 2						
NO.	SPACE	FLOORS	BASE	WALLS	CLG.	SPECIFIC NOTES
222	CORRIDOR	ETR	ETR, RB-1	ETR, PT-5	ETR	10
242	AUDITORIUM	CPT-1, EF-1, WD-1	WB-1	PT-1, PT-3, WD-1, WD-3	AP-1, PT-2, PT-3	2, 3, 5, 6, 7, 8, 9, 11, 12, 18, 19, 20
244	CORRIDOR	ETR, CPT-2	ETR, RB-1	ETR, PT-5	ETR, ACT-1	9, 13, 14
252A	VESTIBULE	CPT-1, CONC	RB-2	PT-3	PT-2	9, 10, 17
252	STAIR	ETR	ETR, RB-1	ETR, PT-5	ETR, PT-5	9, 10, 14
255	CORRIDOR	ETR	RB-1	ETR, PT-5	ETR, PT-5	10
259	STORAGE	ETR	ETR	ETR	ETR	
260	DRESSING ROOM	ETR	ETR	ETR	ETR	
262	STORAGE	ETR	ETR	ETR	ETR	
263	DRESSING ROOM	ETR	ETR	ETR	ETR	
264	STAGE	WD-1, WD-4	ETR	WD-1, ETR	-	2, 4, 5, 6, 15, 18
283	STAIR	ETR	ETR	ETR	ETR	9, 10

FINISH SCHEDULE - LEVEL 1						
NO.	SPACE	FLOORS	BASE	WALLS	CLG.	SPECIFIC NOTES
141	CORRIDOR	ETR	ETR	ETR	ETR, PT-5	13, 14
158	CORRIDOR	ETR	ETR	ETR	ETR, ACT-1	13, 14



**1 FINISH PLAN - LEVEL 1 (BELOW WHEELCHAIR LIFT AREA)**  
SCALE: 1/4" = 1'-0"

TENNESSEE TECH UNIVERSITY  
**DERRBERRY HALL**  
BUILDING UPGRADES - PHASE 1  
1 WILLIAM L. JONES DRIVE  
COOKEVILLE, TN 38505

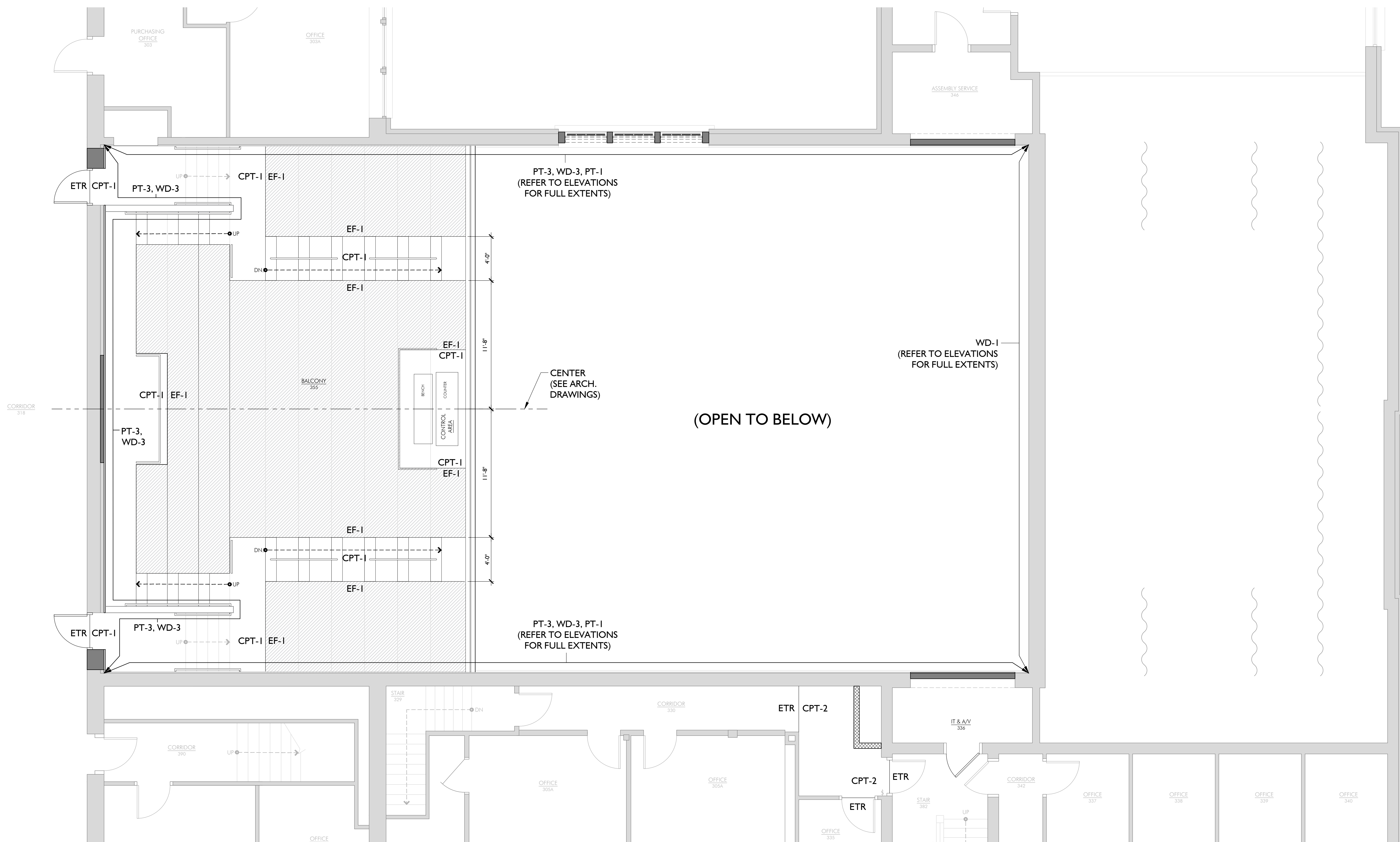


ISSUED: 03.08.24  
SBC PROJECT #: 364/011-05-2021  
GMCA PROJECT #: 202113 TDH

#	DATE	DESCRIPTION
ADD-002	04.05.24	Addendum #2

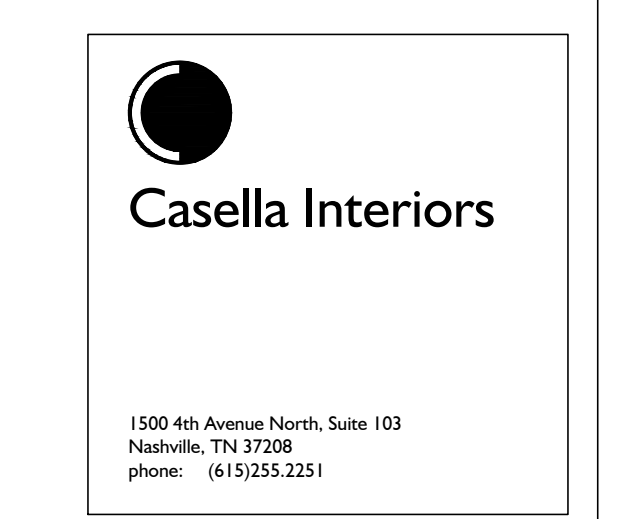
INTERIOR FINISH PLAN AND SCHEDULE - LEVEL 1 & LEVEL 2

**ID1.1**



- SPECIFIC FINISH NOTES**
- TABLE TOP TO BE FL-1, EDGE PROFILE: STRAIGHT. METAL SUPPORT FRAME TO BE PAINTED PT-4, HIGH-GLOSS FINISH.
  - PAINT HANDRAIL & GUARDRAIL AGAINST PAINTED WD WALLS PT-3, HIGH-GLOSS FINISH. PAINT ALL OTHER HANDRAILS & GUARDRAILS PT-4, HIGH-GLOSS FINISH.
  - SEATING BASIS OF DESIGN TO BE IRWIN - ANDANTE. (SEE PROJECT MANUAL FOR APPROVED MANUF. TO PROVIDE EQUAL PRODUCT).
    - BACK: NO. 6 (NO.17 INDIA TEAK ON MAPLE, FABRIC: STINSON, ARTISAN, COLOR: VIOLET 65081)
    - SEAT: NO. 12 (FINISH: CHARCOAL GREY (CHL), FABRIC: STINSON, ARTISAN, COLOR: VIOLET 65081) w/ SEAT NUMBER PLATE (FINISH TBD).
    - aisle PANEL: NO.14 (NO.17 INDIA TEAK ON MAPLE) w/ ROW LETTER PLATE (FINISH TBD).
    - ARMREST: COMFORT-CURVED WOOD (FINISH: NO.17 INDIA TEAK ON MAPLE)
    - SEE ARCH. DRAWINGS FOR CONFIGURATION, SEAT COUNTS, AND WIDTHS.
    - CHAIR PLATFORMS: NO. 4 (FINISH: CHARCOAL GREY (CHL)).
    - PROVIDE BUILT-IN LED LIGHTING AT SIDE PANELS WHERE NOTED IN THE ARCH. DRAWINGS.
  - COLOR OF NEW STAGE TRAVELER CURTAIN & VALANCE TO BE BLACK. (EXISTING REAR BLACK CURTAINS TO REMAIN). SEE PROJECT MANUAL & ARCH. DRAWINGS FOR ADDITIONAL DETAILS.
  - MOTORIZED WINDOW SHADE WITH BLACK OUT FABRIC AND LIGHT FILTER SHADE, SIDE CHANNELS AND PRE-FINISHED METAL HOUSING. BLACK OUT FABRIC TO BE TBD. LIGHT FILTER FABRIC TBD. METAL HOUSING FINISH TO MATCH THE ADJACENT PAINTED WOOD WINDOW TRIM.
  - STAGE NOSING, TRIM, LIGHT COVE TRIM, FACE OF STAGE BASE, STAGE STAIR TREADS & RISERS TO BE WD-1. PROVIDE CAT STAINLESS STEEL STAIR INSERT PLATES (FPS5 10x3) AS INLAY AT STAIR TREAD NOSING. (SEE ARCH. DRAWINGS FOR DETAILS).
  - PROVIDE TARKETT SLN STAIR NOSING AT BALCONY STAIRS. COLOR: 40 BLACK. AT 12"D STEP, MITER SLN NOSING. AT 24"D STEP, CLEANLY CUT SLN NOSING TO TERMINATE AT SPECIFIC NOTE #8 TRANSITION. RUN SPECIFIC NOTE #8 TRANSITION CONTINUOUSLY AT ANY OTHER EXPOSED EDGE OF CPT, TREADS AND RISERS TO HAVE CPT-1. (REVIEW THESE STAIR NOSINGS & TRANSITIONS W/ INTERIOR DESIGNER PRIOR TO FABRICATION).
  - PROVIDE TARKETT SLIM LINE TRANSITION STRIP FROM CPT TO EF/CONC. COLOR: 20 CHARCOAL
  - PROVIDE TARKETT SLIM LINE TRANSITION FROM CPT TO EXISTING VCT FLOORING. COLOR: 20 CHARCOAL
  - AT CORRIDOR OR STAIRWELL SIDE, PAINT NEW WOOD OR NEW HM DOORS & NEW DOOR TRIM OR HM FRAMES. PAINT (CORNER TO CORNER) NEW OR PATCHED WALLS TO MATCH EXISTING ADJACENT WALLS. INSTALL NEW WALL BASES AT PATCHED OR NEW WALLS (CORNER TO CORNER) TO MATCH EXISTING WALL BASE. (SEE ALSO: ALTERNATE #1)
  - AT MAIN AUDITORIUM COFFERED CEILING, PAINT EXISTING PLASTER COFFERS & BEAMS PT-2. INSTALL FLOATING ACOUSTICAL CLOUD SYSTEMS WITHIN THE COFFERS. SUSPENDED CLOUD PANELS TO BE WRAPPED WITH AP-1. (SEE RCP FOR DETAILS).
  - AT CEILING BELOW THE BALCONY, REMOVE EXISTING PLASTER & INSTALL NEW GYP. BOARD (SEE ARCH DRAWINGS FOR DETAILS). PAINT GYP. BOARD PT-3.
  - AT ANY DAMAGED OR NEW WALLS, ADD NEW BASE & PAINT CORNER TO CORNER. COLOR TO MATCH EXISTING.
  - AT ANY DAMAGED OR NEW CEILINGS, PAINT FULL FACE. COLOR TO MATCH EXISTING.
  - THE EXTENT OF NEW FINISHES IN STAGE 264 ARE LIMITED TO THE PROSCENIUM SURROUND, STAGE NOSING, REPLACEMENT OF THE FRONT PORTION OF STAGE FLOORING, REPLACEMENT OF MAIN PROSCENIUM GRAND TRAVELER & VALENCE, AND THE INSTALLATION OF A NEW MID-STAGE TRAVELER. SEE ARCHITECT FOR FURTHER CLARIFICATION OF EXTENTS.
  - BENCH & BACK SUPPORT TO BE WD-1 W/ FABRIC WRAPPED CUSHIONS. CUSHION FABRIC TO MATCH AUDIENCE SEATING FABRIC.
  - CPT-1 IN VESTIBULE 253A TO RUN UNDERNEATH LIP OF LIFT RAMP TO ENSURE SMOOTH TRANSITION. FLOOR OF LIFT TO HAVE CPT-1.
  - INDICATED EXTENTS OF STAGE FRONT. STAGE FRONT WILL BE STAINED WOOD BASE/TRIM & VENEER PLYWOOD (WD-1) OVER MULTIPLE LAYERS OF MDF BOARDS. THE RECESSED PORTIONS OF THE CUT-OUT AREAS OF THE LETTERING WILL BE PAINTED (BACK AND CUT-OUT SIDE).
  - GIVEN DIMENSION AND BOUNDARY CURVE ARE APPROXIMATE. EXACT LOCATION OF ARC TO BE COORDINATED W/ ARCHITECT AND APPROVED SEATING LAYOUT BEFORE INSTALLATION OF ANY FLOOR FINISH MATERIALS. (LOCATION & RADIUS OF ARC TO BE BASED UPON THE ARC TO BE BASED OFF THE LOCATION & RADIUS OF SEATING ARRANGEMENT).
  - PAINT EXISTING WOOD PANELS, TRIM, & BASE PT-3.
  - ALL RISER FACES ADJACENT TO CPT-1 ARE TO HAVE CPT-1. ALL OTHER RISER FACES ARE TO HAVE EF-1.

TENNESSEE TECH UNIVERSITY  
**DERRYBERRY HALL**  
 BUILDING UPGRADES - PHASE I  
 1 WILLIAM L. JONES DRIVE  
 COOKEVILLE, TN 38505



ISSUED: 03.08.24  
 SBC PROJECT #: 364/011-05-2021  
 GMCA PROJECT #: 202113 TDH

REVISED:  
 # DATE DESCRIPTION  
 ADD-002 04.05.24 Addendum #2

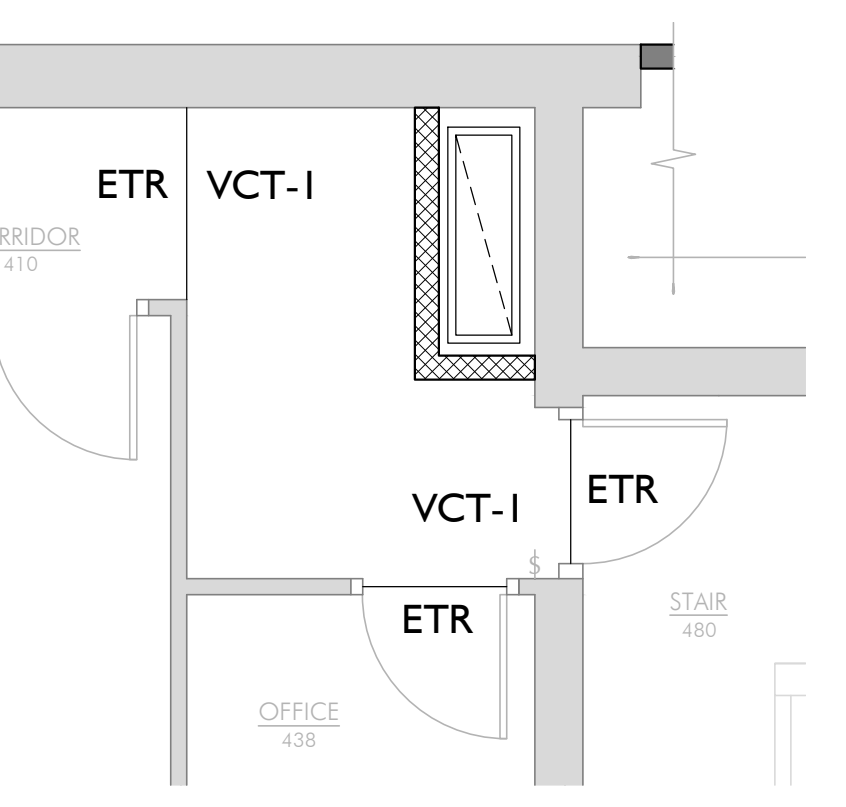
INTERIOR FINISH PLAN AND SCHEDULE - LEVEL 3 & LEVEL 4

ID1.2

**3 FINISH PLAN - LEVEL 3**  
 SCALE: 1/4" = 1'-0"

FINISH SCHEDULE - LEVEL 3						
SPACE NO.	SPACE NAME	FLOORS	BASE	WALLS	CLG.	SPECIFIC NOTES
318	CORRIDOR	ETR	ETR, RB-1	ETR, PT-5	ETR	9, 10
330	CORRIDOR	ETR, CPT-2	ETR, RB-1	ETR, PT-5	ETR, PT-5	9, 13, 14
336	IT & AV	ETR	RB-2	PT-5	ETR	10, 13
346	ASSEMBLY SERVICES	ETR	RB-2	PT-5	ETR	13
355	BALCONY	CPT-1, EF-1	PT-3, WD-3	PT-1, PT-3, WD-3	PT-2, AP-1	1, 2, 3, 7, 8, 9, 11, 16, 20, 21
382	STAIR	ETR	ETR	ETR	ETR	10

FINISH SCHEDULE - LEVEL 4						
SPACE NO.	SPACE NAME	FLOORS	BASE	WALLS	CLG.	SPECIFIC NOTES
410	CORRIDOR	ETR, VCT-1	ETR, RB-1	ETR, PT-5	ETR, PT-5	13, 14



**4 FINISH PLAN - LEVEL 4 (PARTIAL)**  
 SCALE: 1/4" = 1'-0"