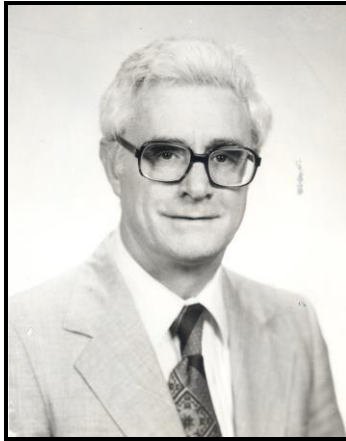


1983 Engineer of Distinction



Ned K. Walters

B.S. Electrical Engineering, TPI, 1956

Director, Safety and Fire Protection Division
Employee Relations Department
E.I. du Pont de Nemours & Co.
Wilmington, Delaware

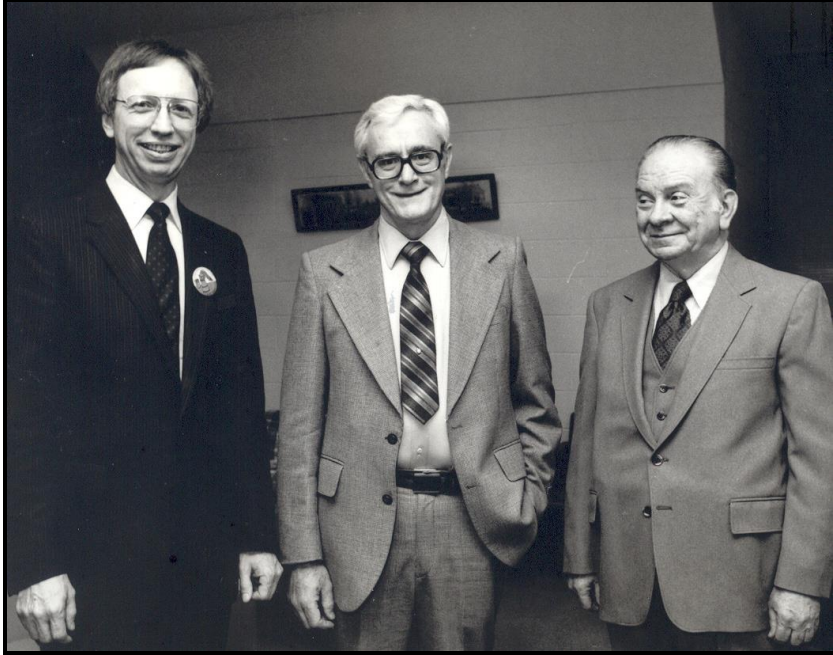
Citation

Ned K. Walters received a baccalaureate degree in electrical engineering from Tennessee Polytechnic Institute in 1956. While serving in the Air Force in 1950-54, he attended Sophia University in Tokyo, Japan.

Upon getting his degree in electrical engineering, Mr. Walters joined Dupont in 1956 where he has served throughout his professional career. His first assignment with Dupont was as an Instrument Electrical Engineer, Sabine Rivers Works, Texas. In July 1961 he became a Consultant to the International Department's Far Eastern Division in Tokyo. Returning to Sabine in July 1962, he became the Assistant Engineering Superintendent and later the Production Division Superintendent.

In subsequent appointments, Mr. Walters held the position of Employee Relations Superintendent and Works Engineer, Washington Works, West Virginia; was Assistant Manager at Carney's Point, New Jersey. In January 1973, he became the corporate Assistant Director of the Safety and Fire Protection Division. He assumed his present position of Director of that corporate division in July 1973.

Mr. Walters has been active in community and professional affairs, including the following: Board of Directors, Delaware Safety Council and National Safety Council; Safety & Fire Protection Committee, National Association of Manufacturers; Chairman, Board of Engineering Advisors, Tennessee Technological University; Board of Trustees of National Fire Protection Association, Research Foundation; Vice Chairman, Chemical Manufacturers Association, Occupational Safety & Health Committee. He was a charter member of the Tennessee Tech Board of Engineering Advisors where he has served continuously since 1968.



Dean Leighton Sissom poses with 1983 Engineers of Distinction Ned Walters (center) and Ray Kinslow