

Starting Procedures for VMware Client

1. Navigate with your **Internet browser** to:

www.tntech.edu/engineering/computing-resources

Note: If above link does not work copy and paste the entire URL into your browser's address bar and press enter.

Scroll down to Computer Labs section and click the link that says **VMware Horizon View Client Download**

- **Computing Labs**

- **MoLE-SI**

MoLE-SI (Mobile Learning Environment and Systems Infrastructure) has been active in the college of Engineering since 2009. MoLE-SI has shown to impact students' active learning abilities and provides a mobile, dynamic, and collaborative environment for instruction, where engineering software can be accessed remotely on-demand.

➡ **VMware Horizon View Client Download** ➡
Installing View Client in Mac, iPad, Linux, and Android
Instructions to use MoLE-SI (PCs)
MoLE-SI Instruction Sheet (Mac)

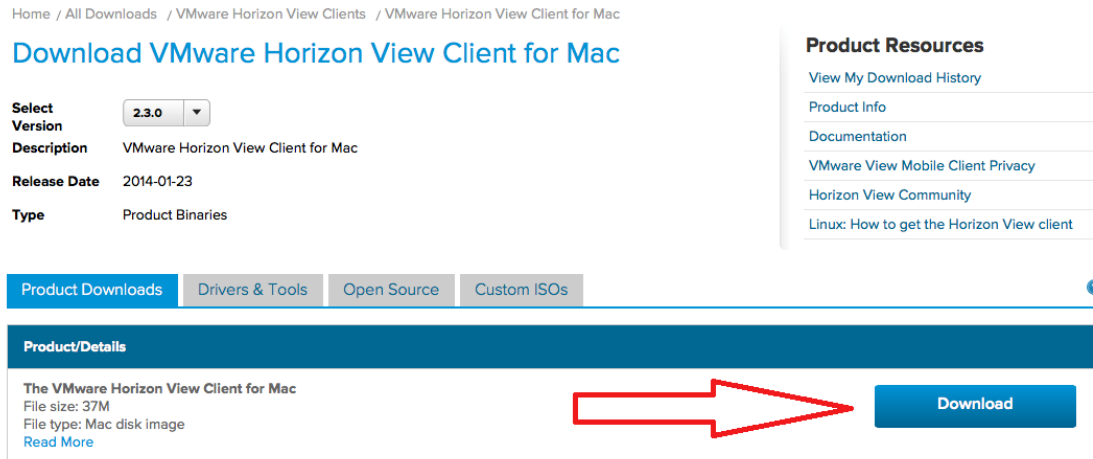
- **General Labs**

ITS maintain several computer labs for your use. These labs and computing facilities include modern desktop machines that allow access to coursework software that is common to various disciplines in campus. These facilities are primarily located in the Library and in Clement Hall 313. For additional information please refer to <https://www.tntech.edu/its/computing/>

Find the **VMware Horizon View Client for Mac** and click the “**Go to downloads**” link in that section.

✓	VMware Horizon View Client for Windows with Local Mode Option		
	VMware Horizon View Client for 32-bit Windows with Local Mode Option	2013-07-11	Go to Downloads
	VMware Horizon View Client for 64-bit Windows with Local Mode Option	2013-07-11	Go to Downloads
✓	VMware Horizon View Client for Mac		
	VMware Horizon View Client for Mac	2014-01-23	Go to Downloads
✓	VMware Horizon View Client for iOS		
	VMware Horizon View Client for iOS	2014-04-18	Go to Downloads
✓	VMware Horizon View Client for Android		

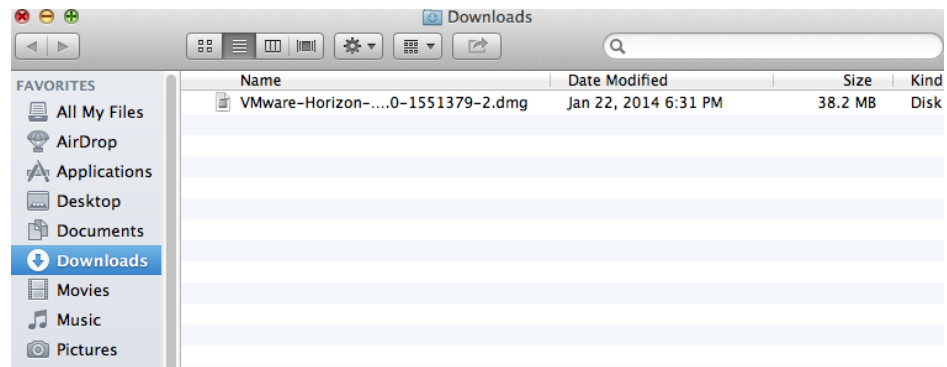
Click the **large blue download button** on the right hand side of the screen



2. Navigate to the **downloads folder** to launch the downloaded program named **VMware-Horizon Client**.

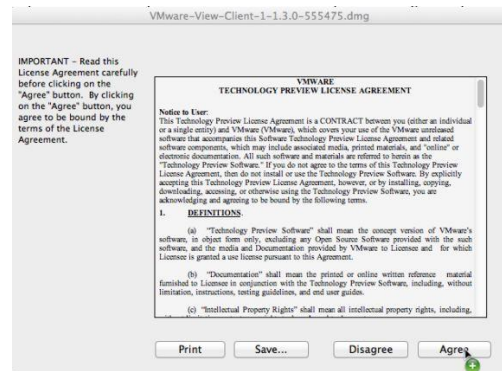


OR



4. Click **“Agree”** on terms of agreement.

5. **Drag** the VMware icon to the applications folder.



6. **Launch** the VMware Horizon View Client program from the applications folder.
7. If prompted for IPv select IPv4



System Preferences



TextEdit



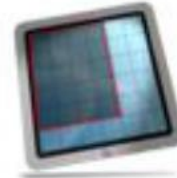
Time Machine



VMware Fusion

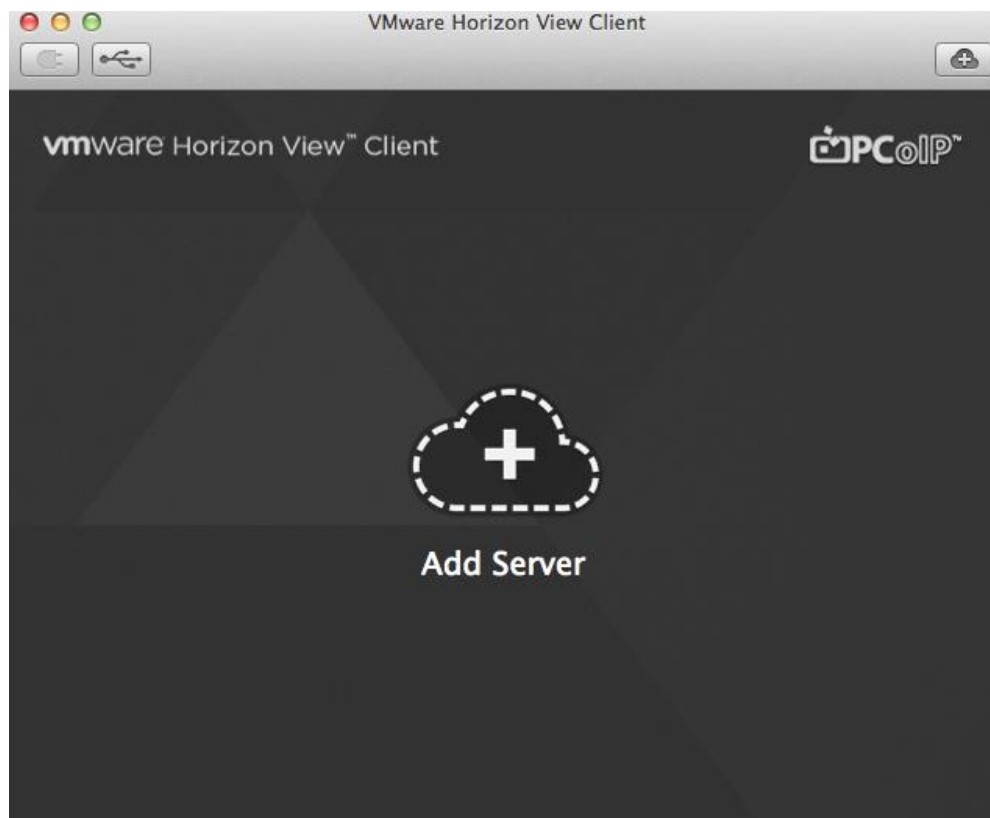


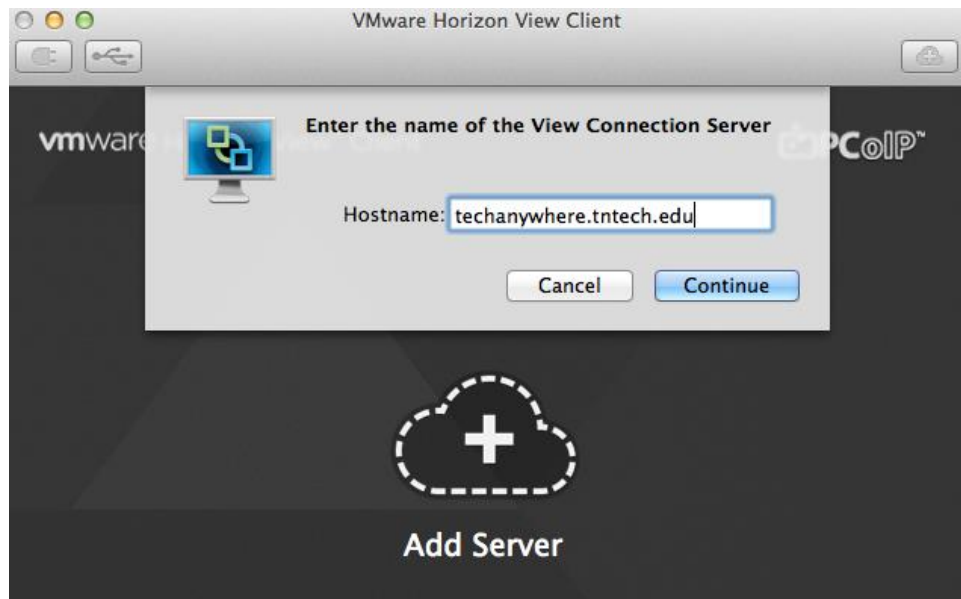
VMware View Client



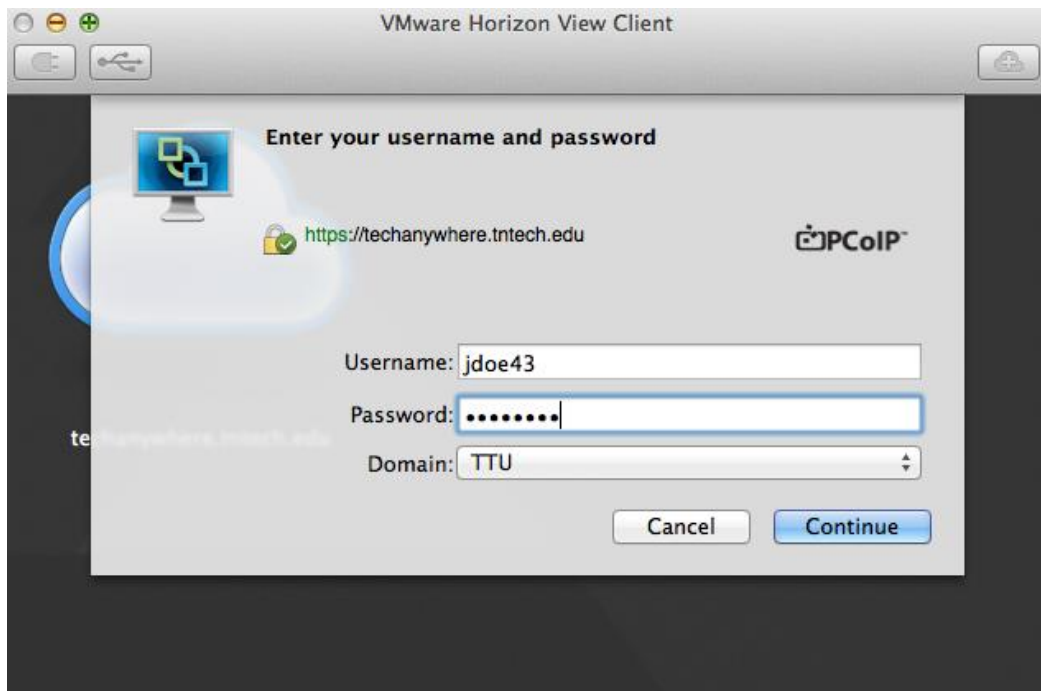
Window Tidy

8. Click **add server** and enter **techanywhere.tntech.edu**.

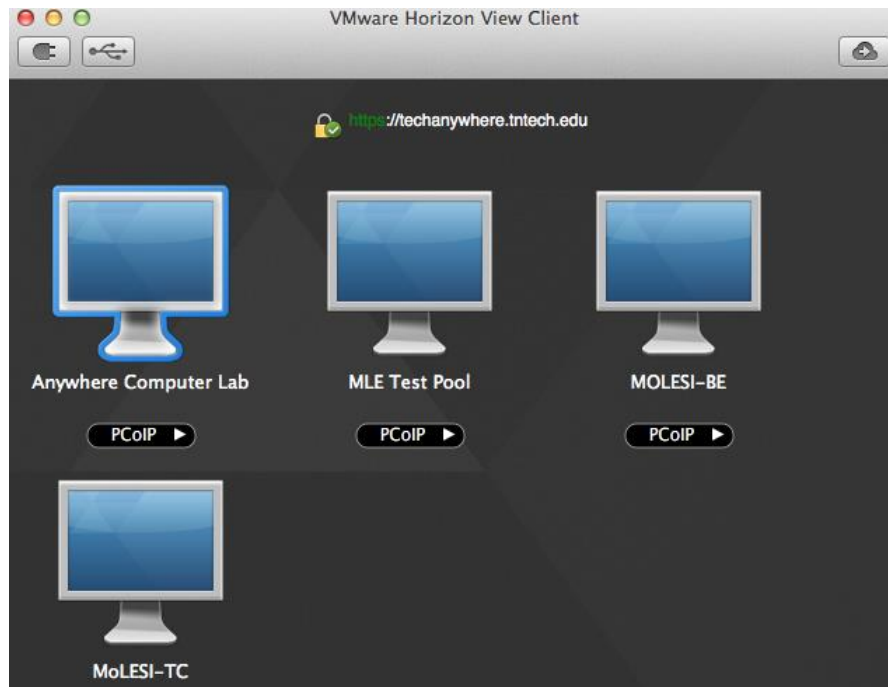




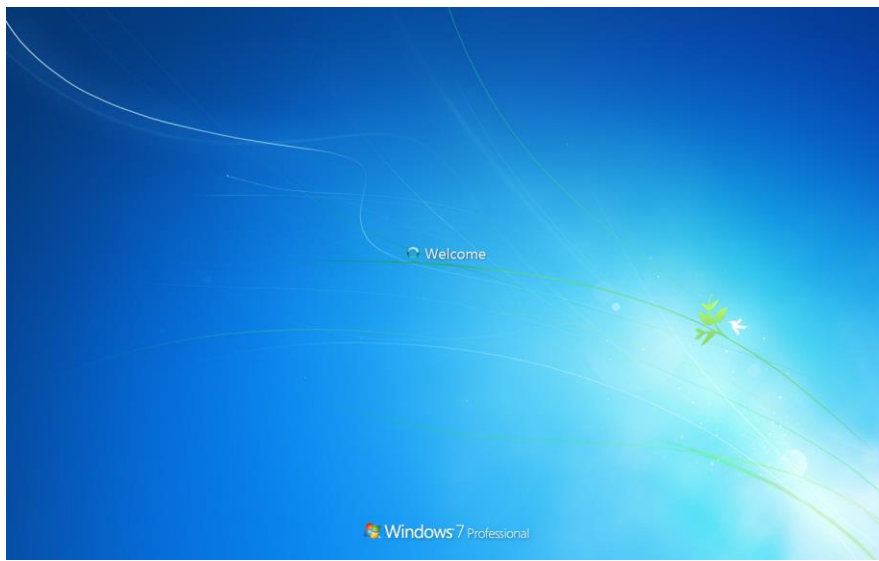
9. Enter your **user name and password**, make sure domain is TTU, then click continue.



10. Select your corresponding **icon** according to your major.



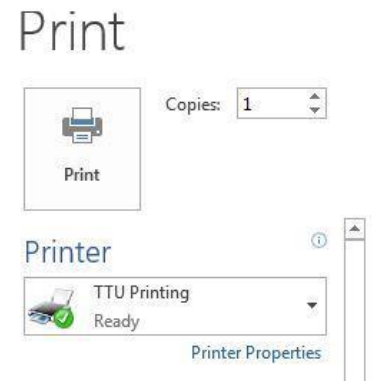
10. Windows will begin to start up and you will be presented with your virtual machine.



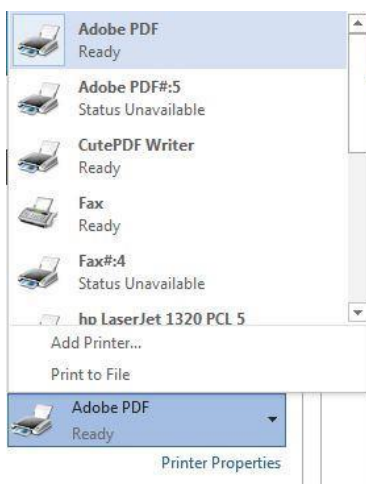
Printing

After clicking print, **TTU Printing** should be selected as the printer (as shown to the right).

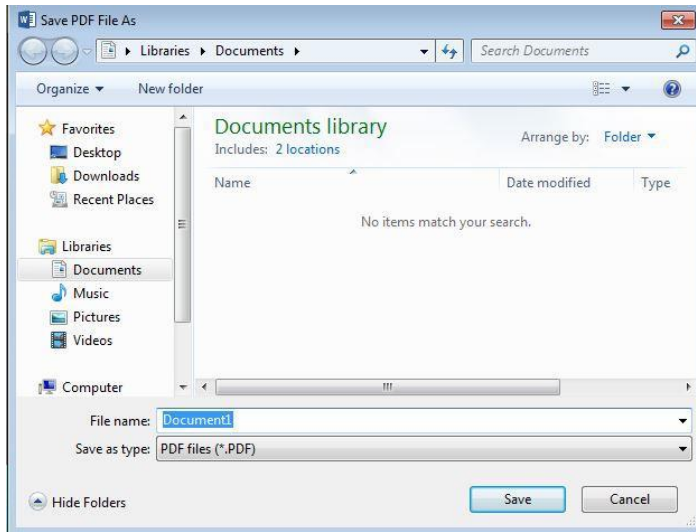
To print on campus, leave **TTU Printing** selected and click **Print**. You should find the closest print release station to get the print job finished.



To print to a PDF, click the drop-down arrow and select **Adobe PDF** or **CutePDF Writer**.



Click print and a save window will appear.



After clicking save, the document will be saved as a PDF.

Connecting a USB Device

At the Top of the screen, the following menu is displayed (it could vary depending on device).



Click the drop-down arrow next to **Connect USB Device** and click **Automatically Connect when Inserted**.

Plug in the USB Device and the device will automatically connect.