

Starting Procedures for VMware Client

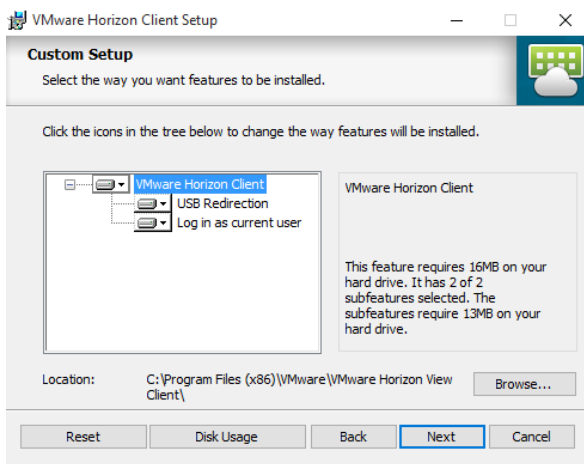
1. Navigate with your Internet browser to <https://www.tntech.edu/engineering/computing-resources> and under the Computing Labs section, select **VMware Horizon View Client** file to download the VMware Horizon View Client based on the operating system of your portable device.

Notes:

- Links to App stores are also included for various platforms and installation should be carried out automatically from the App store.
2. Launch the downloaded program.
 3. Click next to continue.

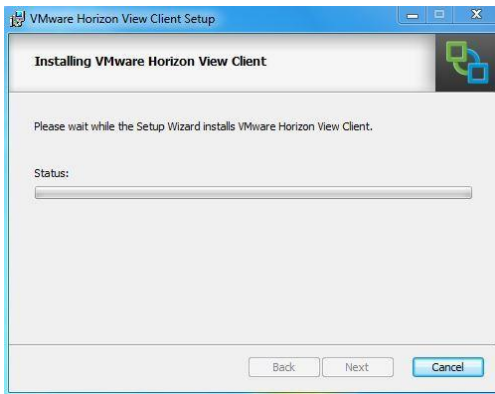


4. Check the box to accept terms and click next. Click next again.
5. Select IPv4 when prompted to select IP protocol version and lick next
6. Click Next in the Custom Setup window



7. Enter **techanywhere.tntech.edu** when presented with the **Connection Server** screen.
8. Click next on Enhanced Single Sign On and next again on Configure shortcuts.

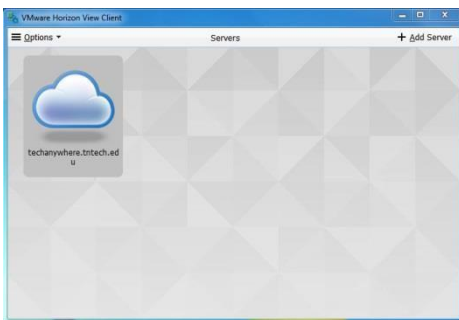
9. Click install on Ready to install program.



10. Click Finish when installation is complete and restart your system if required.

11. After restart, double click the VMware Horizon View Client icon.

12. **techanywhere.tntech.edu** should be under the cloud. Double click the cloud to connect.



13. Enter your TTU credentials and select TTU in the Domain field.

14. Click **Login** and select your corresponding pool according to your major (as shown below). The pools have been named by departments (i.e. MoLESI-BE, MoLESI-ChemE, etc.)



Printing

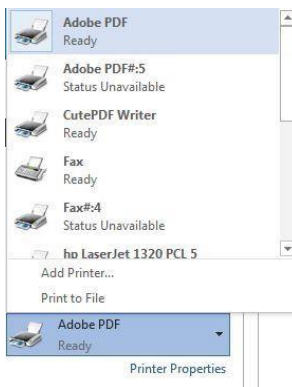
After clicking print, **TTU Printing** should be selected as the printer (as shown to the right).

To print on campus, leave **TTU Printing** selected and click **Print**. You should find the closest print release station to get the print job finished.

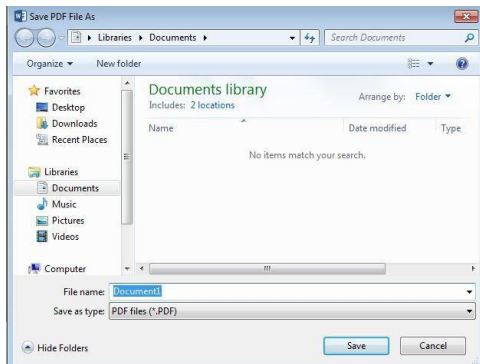
Print



To print to a PDF, click the drop-down arrow and select **Adobe PDF** or **CutePDF Writer**.



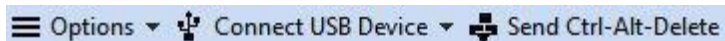
Click print and a save window will appear.



After clicking save, the document will be saved as a PDF.

Connecting a USB Device

At the Top of the screen, the following menu is displayed (it could vary depending on device).



Click the drop-down arrow next to **Connect USB Device** and click **Automatically Connect when Inserted**.

Plug in the USB Device and the device will automatically connect.