

The TN Tech Theatre Program in Cooperation with
Center Stage presents the
2023 Autumn Production.

CARRIE

the musical

MUSIC BY MICHAEL GORE
LYRICS BY DEAN PITCHFORD
BOOK BY LAWRENCE D. COHEN
BASED ON THE NOVEL BY STEPHEN KING



Directed by Mark Harry Creter
Music Direction by Mendy Richards
Choreography by Emma Russell

Tech Players' 69th Season



BACKDOOR
PLAYHOUSE

College of Fine Arts

The Setting of the Play
Chamberlain, a small town in
Western Maine.
The Time of the Play
The present.

***Carrie* will have a 15 minute intermission.**
Concessions are for sale in the lobby.

Carrie the Musical has a checkered history and was not considered an initial success when it opened. In fact, it was a notorious failure. But, despite the negative publicity, the show still won a bunch of awards and has become a popular production in regional theatres around the country.

Winner! 1988 Theatre World Award for Best Broadway Debut (Linzi Hateley)

Nominee: 1988 Outer Critics Circle Award for Outstanding Actress in a Musical (Betty Buckley)

Winner! 2012 Off Broadway Alliance Award for Best Musical Revival

Nominee: Five 2012 Drama Desk Awards, including Outstanding Revival of a Musical

Nominee: 2012 Outer Critics Circle Award for Best Revival of a Musical, Broadway or Off-Broadway

Nominee: Two 2012 Lucille Lortel Awards

Nominee: Two 2013 Sydney Theatre Awards, including Best Production of a Musical

Nominee: Seven 2013 Bay Area Theatre Critics Circle Awards (Ray of Light Theatre)

Winner! 2015 Helen Hayes Award for Outstanding Lead Actress in a Musical (Barbara Walsh at Studio 2nd Stage Theatre, Washington)

Winner! 2015 L.A. Drama Critics Circle Award, Best Actress in a Musical (Emily Lopez, La Mirada Theatre)

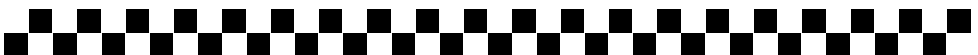
TRIGGER WARNING: The content of this production may be emotionally challenging and potentially traumatizing. It includes depictions and themes that may be highly sensitive in nature to some audience members.



The Persons of the Play

Emily Holman*	Carrie White
Maddie Maas	Sue Snell
Becca Moore	Margaret White
Riley Keegan	Tommy Ross
Evelyn Shirley	Chris Hargeson
Owen Reid	Billy Nolan
RheaAnne Geer	Miss Gardner
Conner Beck	Mr. Stephens, Reverend Bliss
Victoria Janow	Frieda
Emily J. Franklin	Norma
Hannah Rockensock	Helen
Andy Moyer	George
Rigel Marshall	Freddy
CJ Allen	Stokes, Interrogator
Ash Yoder	Wendy, Interrogator
Madison Kristof	Beverley
Dani Wolford	Annie

**signifies member of Alpha Psi Omega , Pi Upsilon Cast
Dramatic Honor Society*



The Production Staff

Producer/Director: Mark Harry Creter*

Production Manager/Sound Designer: James Lyle Alder*

Facilities Manager: James Lyle Alder*

Music Director: Mendy Richards*

Assistant Director/Intimacy Coordinator: William Guynn*

Vocal Coach: Chelsea Holland*

Chorographer: Emma Russell

Stage Manager: Chloe White*

Assistant Stage Manager/Deck Manager: Malena Nesbitt

Technical Director: Ryan Steele

Movement Coordinator/Fight Captain: Samuel Dunn

Lighting Designer: Matthew Wilson*

Assistant Light Designer/Head Electrician: Avantika Laine

Light Board Operator: William Guynn*

Sound Designer/Board Operator: Madison Roessel

Sound Board Operator: Miranda Boyd

Audio Engineer: Nathan McPherson

Projection Operator: Avantika Laine

Scenic Designer/Lead Carpenter: Charles Zuller

Scenic Artist: Suzie Zuller

Effects Designer: Matthew Melton*

Set Construction/Painting: Students in Stagecraft I, II

Costume Designer: Caleb Maxwell

Backstage Crew: Owen McClister, Bryce Brown, Samuel Hopkins, Dylan Trapp, Lucy Dunn, Max Johnson, Briley Dempsey, Emily Sorrow, Corey Goavec, Caleb Maxwell

Prop Meister: Bethany Brock

**signifies member of Alpha Psi Omega , Pi Upsilon Cast Dramatic Honor Society*

The Production Staff

Prop Running Crew: Trinity Basham, Molly Ebersole, Megan Erikson

Makeup Chief: Alex Hall

Publicity Coordinator: Laken Brown

Box Office Manager: Matthew Melton*

Front of House/Concessions: Laken Brown, Erlin Price, Aaron Ross,
Kennady Campbell

Program/Poster Design: M. Creter*

Videographer/Photographer: Aaron Ramsey*

Playhouse Emeritus: Colin Forsyth*

**signifies member of Alpha Psi Omega, Pi Upsilon cast Dramatic Honor Society*

For Your Information:

No person shall be excluded from participation in, be denied the benefits of, or be subject to discrimination under any program or activity of the TTU Backdoor Playhouse on the grounds of race, color, sexual orientation, or national origin.

Thank you, The Management

Our Lovely and Talented Cast



Emily Holman*



Maddie Maas



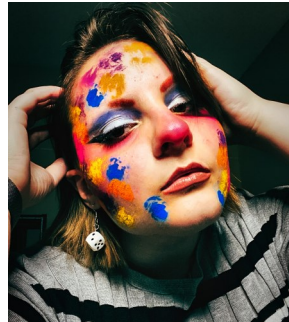
Becca Moore



Evelyn Shirley



Riley Keegan



RheaAnne Geer



Owen Reid



Hannah Rockensock

Our Lovely and Talented Cast



Emily J. Franklin



CJ Allen



Connor Beck



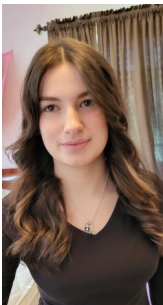
Ash Yoder



Madison Kristof



Rigel Marshall



Victoria Janow



Dani Wolford



Andy Moyer

**signifies member of Alpha Psi Omega Dramatic Honor Society*

The Orchestra

Conductor: Mendy Richards

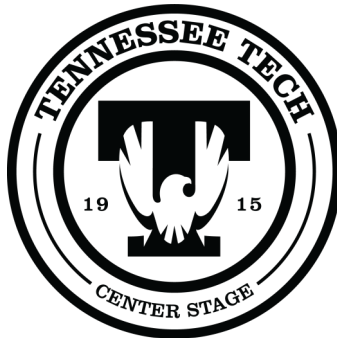
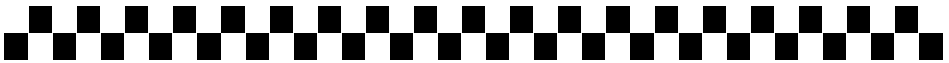
Pianist: Josh Davis

2nd Pianist: Chris Keams

Guitarist: Noah Lusk

Bassist: Patrick Howard

Drummer: Jazzy Jones



BACKDOOR IMPROV TROUPE (BIT)

Interested in being funny?

Interested in being funny quickly???

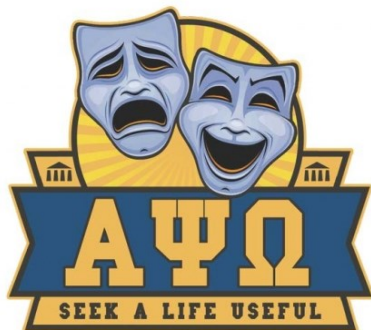
Come on down to the Backdoor Playhouse on Fridays from
4:15-5:30 and join Tech's new IMPROV Team.

Anyone and everyone is welcome!

A few thoughts from the director...

[illegible]

Mark H. Creter **Artistic Director, 1992-present.**



MUSICAL NUMBERS

Act I:

In	Kids
Carrie	Carrie
Open Your Heart	Rev Bliss, Margaret, Carrie, Choir
And Eve Was Weak	Margaret and Carrie
The World According to Chris	Chris, and Kids
Evening Prayers	Carrie, Margaret
Dreamer in Disguise	Tommy
Once You See	Sue
Unsuspecting Hearts	Miss Gardner, Carrie
Do Me a Favor	Sue, Chris, Tommy, Billy, Kids
I Remember How Those Boys Could Dance	Carrie, Margaret

Act II:

A Night We'll Never Forget	Kids, Sue, Tommy, Chris, Billy
You Shine	Tommy, Sue
Why Not Me?	Carrie
Stay Here Instead	Margaret, Carrie
When There's No One	Margaret
Prom Arrival	Kids, Tommy, Carrie
Unsuspecting Hearts (reprise)	Carrie, Miss Gardner
Dreamer in Disguise (reprise)	Tommy, Carrie
Prom Climax	Chris, Billy, Carrie, Tommy, Kids
Alma Mater	Kids
The Destruction	Carrie, Ensemble
Carrie (reprise)	Margaret, Carrie
Epilogue	Sue, Ensemble

About the players...

Emily Holman* (Carrie White) is so excited and proud to be a part of this wonderful production of *Carrie the Musical*. She is thrilled to be given the opportunity to play one of her all-time favorite horror characters. Though she has already performed at the Backdoor Playhouse before as Young Johnny in *Crawlspace: a True Crime Musical*, Carrie is her favorite role yet!

Maddie Maas (Sue Snell) is a music education major here at Tennessee Tech. Her favorite roles include “Meg” in *Leading Ladies*, “Carol” in *Crawlspace: The Musical*, and “Alice” in *The Addams Family Musical*. She would like to thank her family and her boyfriend, Owen, for their continual love and support.

Becca Moore (Margaret White) is enjoying her third time working with the Backdoor Playhouse. She is a senior at TTU majoring in Secondary Education Theatre. She has enjoyed the memories she has made with everyone. She wishes to thank her directors, cast members, and stage management team. She would also like to thank her family, friends, and everyone who came out to see the show. “I hope you all enjoy Carrie and this weird messed up story!”

Riley Keegan (Tommy Ross) is excited for his first performance at the Backdoor Playhouse! When not working on sports or his poetic prowess, Riley studies Musical Theater Performance at Tennessee Tech. He would like to thank God, his family, and especially Mark Creter for his unwavering support!

Evelyn Shirley (Chris Hargenson) This is Evelyn’s first production with the playhouse. Some of her favorite roles have been “The Baker’s Wife” in *Into the Woods*, “Anna” in *Frozen*, and “Cosette” in *Les Miserables*. She would like to thank Josh Groban and also the Playhouse for this incredible opportunity.

Owen Reid (Billy Nolan) is a senior chemistry major at TTU and is totally psyched to be in his first Backdoor Playhouse production. He’d like to thank his fellow actors and the crew, as well as his father and late mother for giving him life and for making this acting thing a reality.

Rhea Geer (Ms. Gardner) is excited for her second show with the Backdoor Playhouse. Their first role with the playhouse was “Florence” in *Leading Ladies*. They are from Sparta, TN and they are a Music Theatre Performance major. They also play trombone. They would like to thank everyone for coming out to see the show!

*signifies member of Alpha Psi Omega Dramatic Honor Society

About the players...

Connor Beck (Mr. Stevens/Rev. Bliss) is new to the Backdoor Playhouse stage. He is a huge musical theatre fanatic and first started Musical Theatre his Junior year where he played as the Minstrel in *Once Upon A Mattress*. He hopes you all enjoy the show.

Victoria Janow (Frieda) is new to the Backdoor Playhouse. She started theatre when she was nine years old at the Tennessee Valley Theatre. Her favorite roles include “Wednesday Addams” in *The Addams Family*, and “Cecily Cardew” in *The Importance of Being Earnest*. *Carrie* is her 24th production, and she is very blessed to have been a part of it. She would like to thank her parents for their constant support throughout her journey and to praise God for His grace and protection.

Emily J. Franklin (Norma) is a sophomore at Tech majoring in vocal music and minoring in theater. She began in theater at the age of 6 years old in *The Little Mermaid* and her love for the arts has continued since. Her favorite performance she’s done has been *Annie* while figure skating and would love to do theater on ice again.

Hannah Rockensock (Helen) is excited to be joining the Backdoor Playhouse for this year's musical. This past summer, Hannah worked with the Thingamajig Performing Arts Center in Pagosa Springs, Colorado in *Jersey Boys* and *Godspell* (2011). Her favorite roles include "Grandma Addams" from *The Addams Family Musical* and "Chip" from *Beauty and the Beast*. She'd like to thank the many people who influenced her to follow her passion and can't wait to see what's in store for the future.

Rigel Marshall (Freddy) is a freshman here at Tech. He has acted in many shows, with his favorites including the roles of “Captain Billy Bones” in *Treasure Island* at Rockvale High School and “Ghost of Christmas Future/ Narrator” in *Christmas Carol* at Rockvale High School. He would like to thank his friends and family for supporting him in theater throughout the years.

Andrew D. Moyer (George) is new to the Backdoor Playhouse, but not new to theatre. His favorite past roles are “Harold Hill” from *Music Man* and “Julian Marsh” from *42nd Street*, both of which he played for the Irish Arts program at Knoxville Catholic High School. He wishes to say thank you to *Top Ramen* for the small comforts their noodles provide him.

*signifies member of Alpha Psi Omega Dramatic Honor Society

About the players...

Connor J Allen (Stokes/Interrogator) is new to the stage here at Tennessee Tech! He would like it to be known that "sometimes even engineers can sing." He first acted in a hometown production of *The Wizard of Oz* as Uncle Henry, but his passion for the theater took off when he starred as "Captain von Trapp" in his senior year production of *The Sound of Music*. He wishes to thank his family, who always believe in him, and the directorial team, who gave him a chance in this production!

Ashley "Ash" Yoder (Wendy/Interrogator) is excited to be back on stage in *Carrie: The Musical*. Ash has previously performed in *The Madness of Lady Bright* as "Girl" and is excited to be in her first musical at the Backdoor Playhouse. Ash would like to thank her wonderful family for all their support and love!

Dani Wolford (Annie) is new to the Backdoor Playhouse. *Carrie* is the first production in which they have been cast. They would like to thank their parents, friends, and Steven for being supportive and Cyric for walking them home after rehearsal.

Madison Kristof (Beverley) is a junior at Tennessee Tech and is majoring in psychology. She's been taking theater classes since she was 11 years old and this will be her second show. Madison loves the lasting friendships she makes while performing. She'd like to thank her parents for supporting her in everything she does.

About the crew...

James Lyle Alder* (Facilities Manager, Scene Shop Foreperson) has served in many disparate roles for various academic, community and professional productions, including as Lighting Designer, Master Carpenter, Scenic Designer, Electrician, Stage Manager, and as a Producer—in addition to occasionally gracing the stage as an actor. James is a theatre artist, a local polemicist and an activist involved in a multitude of initiatives focusing on the Impoverished, the unhoused, and the incarcerated. He views his dramatic work as a natural expression and manifestation of his values, and believes that the theatre is a sacred space wherein empathy is engendered through storytelling, and where each practitioner is expected to give according to their abilities, and to receive according to their needs. An alum of both CHS and Tennessee Tech, James has lived in Cookeville for seventeen years. He now resides here with: his gorgeous partner, Kenny Payne; his black shorthair, Ho Chi Minh; his mastador, Ronan; and his dear mother, Brenda Jo.

About the staff...

Chelsea Holland* (Voice Coach) is beyond excited to be helping out with this show! Chelsea has directed many musicals and programs throughout her fifteen-year career as an elementary music teacher; her favorite being *The Lion King Kids*. Chelsea loves the backdoor playhouse theatre community and would like to thank Mark and Mendy for allowing her to help out. She also wants to let the cast and crew know how proud she is of all of them and their hard work. As always, she would like to thank her partner and her amazing children for being her world and keeping things together at home while she spent many evenings away.

Chloe White * (Stage Manager) was first introduced to theatre in middle school when she joined the drama club and has been hooked since. She is passionate about backstage work and acting. This is her seventh production with the Backdoor Playhouse, and she hopes to work on many more! After graduating, she will pursue a career in stage management. She wants to thank her friends and family for supporting her love of theatre and the Playhouse for giving her the opportunity to do what she loves every day.

William Guynn* (Assistant Director) is afraid of Virginia Woolf. He has appeared recently on the Playhouse stage as "Leo" in *Leading Ladies*. He would like to thank Chloe White and Malena Nesbitt for listening to all his incessant whining.

Samuel Dunn (Movement Coordinator) has seen the progression of living a life full of movement. Raised in the scouts, wrestling, and dancing at Stage One Dance Studio, Samuel mastered various forms of choreography and stage work. Chasing his cats around the house and his Northern wife of 6 years keeping him on his proverbial and literal toes. Samuel has performed on stage, ranging from *Cabaret* to *The Rocky Horror Show*, and the *Summoning of Everyman*. 2023's *Carrie* is Samuel's 2nd Backdoor Playhouse production working as choreography and staging coordinator, lend the cast your ears and toss a coin to your local theatre!

Emma Russell (Choreographer) is a sophomore at Tennessee Tech. She has been dancing for over a decade and choreographing/teaching for almost 6 years. She currently works as an instructor at Stage One Dance Studio and has loved getting to work with the Backdoor Playhouse for the first time. She would like to thank Mark Creter for the opportunity to work on this show, as well as the talented cast and crew for being so awesome and welcoming! Follow her on instagram @emmamariechoreography to keep up with her choreography projects! She hopes you enjoy the show!

Malena Nesbitt (Deck Manager) is a sophomore here at Tech. This is her fourth production. And she really hates writing bios, so this is as far as she got.

**signifies member of Alpha Psi Omega Dramatic Honor Society*

Artistic Director



Mark Harry Creter is a Professor of Theatre for the School of Music at Tennessee Technological University as well as the artistic director of the Backdoor Playhouse. He recently directed productions of *Leading Ladies* and *The Madness of Lady Bright* at Tech and *The Summoning of Everyman* for the Dogwood Shakespeare Festival. His favourite performance remains the role of Willy Loman in *Death of a Salesman* by Arthur Miller. He had the pleasure of performing the role of “Erie” Smith in the 2021 winter production of *Hughie* by Eugene O’Neill, directed by close friend, and colleague, Joe Clark.

He received his Bachelor of Arts in Theatrical Production from Lynchburg College in Lynchburg, Virginia and his Master of Fine Arts in Acting and Directing from the University of North Carolina at Greensboro. After finishing his college training he spent a number of years performing professionally in regional theatres and dinner theatres from Greensboro, North Carolina to Omaha, Nebraska. Eventually he settled in Tennessee, first in Knoxville where he co-founded the Tennessee Stage Company and now in Cookeville where he continues to get into all kinds of theatrical trouble.

He has received awards for outstanding directing and acting from the Knoxville Area Theatre Coalition. He received the artist patron award from the Cookeville Arts Council and the Intellectual Freedom Award from the National Council of Teachers of English for his work on *The Vagina Monologues*. He received the QEP Award of Excellence in Innovative Instruction for 2008-2009 with his friend and colleague Andy Smith. He was winner of the College of Arts & Sciences Award for Research and Creative Activity for 2015.

He is professionally associated with the Tennessee Theatre Association, the South Eastern Theatre Conference, the Kennedy Centre American College Theatre Festival and the David Mamet Society.

He lives in Cookeville with his beautiful wife, independent business owner and local dance instructor Jennifer Dotson-Creter. They have a fantastic blue-eyed son named Gus, who continues to rock his college career at Tennessee Tech. Mark remains grateful for the constant support he receives from family and friends.

AUDITIONS FOR DIRECTING CLASS ONE-ACT PLAYS!

Sunday, November 5, 2023

3:00 p.m. to 7:00 p.m.

Backdoor Playhouse

THE STORY: Eight student directors will each be directing a One-act play of their choosing. This is their final project for THEA 4400-Directing.

Auditions are open to all interested actors.

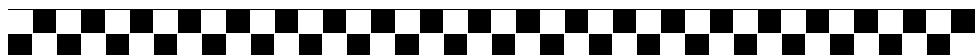
You do not need to be a student to audition.

No preparation is necessary. Auditions will consist of cold-readings from the scripts.

Rehearsals will take place throughout November.

Directing Class 2023-One Acts will be performed;
December 1, 2023 at 8:00 p.m.

Matinee: December 2, 2023 at 2:00 p.m.



AUDITIONS FOR
SPRING PRODUCTION

The Witch

By Jen Silverman

Directed by Prudence Van Aalten

Sunday, February 11, 2024

2:00 pm to 5:00 pm

Backdoor Playhouse

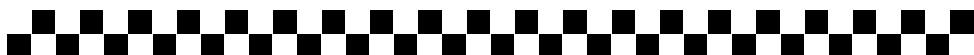
SUMMARY

A charming devil arrives in the quiet village of Edmonton to bargain for the souls of its residents in exchange for their darkest wishes. Elizabeth should be his easiest target, having been labeled a “witch” and cast out by the town, but her soul is not so readily bought. As the devil returns to convince her – and then returns again – unexpected passions flare, alliances are formed, and the village is forever changed. An inventive retelling of a Jacobean drama, this sharp, subversive fable debates how much our souls are worth when hope is hard to come by.

Auditions are open to all interested actors.

No preparation is necessary.

Auditions will consist of
cold-readings from the scripts.





Musical Director, Conductor

Melinda L. “Mendy” Richards (Musical Director and Orchestra Conductor) brings a depth and breadth of experience to the Backdoor Playhouse in her 17th such musical theatre project, the Fall 2023 premier production of “Carrie: The Musical.” Holder of the B.S. in Music Education from Tennessee Tech, and the M.Mus. in percussion performance from the University of Tennessee, she studied conducting of the late James Wattenbarger and Don Neuen. Legacies being what they are, Mendy can trace her conducting “genealogy” to Robert Shaw and Julius Hereford, the latter of whom mentored both a seasoned Shaw in his early career and a very young Leonard Bernstein. Formerly a professional wind band conductor with the United States Air Force, she has conducted concerts throughout the United States and Mexico. Mendy has been active in the theatre for many years, as an actor, singer, assistant stage manager, musician, and musical director; and so brings a special connection to the actors in the musicals for which she has provided musical direction, including “Assassins,” “Meredith Willson’s The Music Man,” “Bat Boy: The Musical,” “A Funny Thing Happened on the Way to the Forum,” “25th Annual Putnam County Spelling Bee,” “Man of La Mancha” “Cabaret,” “Rocky Horror Show,” “Avenue Q,” “Chicago,” “Crawlspace: A True Crime Musical,” and “The Fantasticks,” to name a few.

An active Tech Player during her undergraduate days at Tennessee Tech, Mendy was inducted into Alpha Psi Omega in 1971. We don’t know where her certificate is, but it should be on our wall! Favorite roles as an actor and Tech Player were “Conjur Woman” in the 1970 production of “Dark of the Moon,” and the “White Rabbit” for the 1971 production of “Alice in Wonderland,” a role that reprised the next year for the collaboration of Theatre and Music Departments, “Camelot.” Clearly, the “roar of the greasepaint” is in Mendy’s ears, and she relishes every moment spent working on musical projects such as this.

Of this production, she says, “The opportunity to work with Mark Creter on yet another project at the Backdoor is an always a rare and special treat for me. We have worked together on premiers and unique projects before, and our collaborations go back to 2008. (I’ll let you do the math). The cast of “Carrie” is one of the best we have fielded, and I believe you will agree with me once you see and hear them. They have been a joy to work with and their efforts will be on full display each and every night of this run. Alrighty then! So, sit back, buckle up for the Backdoor Playhouse’s premier production of “Carrie: The Musical.”

Tennessee Tech Theatre Program in the College of Fine Arts

The Theatre program operates as part of the School of Music in the College of Fine Arts.

Students who are interested in theatre can work towards a Bachelor of Arts degree in English with a concentration in Theatre or a degree in Musical

Theatre in the School of Music. The student can pursue their interest in many different aspects of theatre such as acting, directing, and technical theatre work. Areas of study include stagecraft, theatre design, theatre history, dramatic literature, and film studies. Students can also pursue a minor in Theatre.

The theatre program currently produces three productions a year. The productions are presented in the Backdoor Playhouse located in the historic Jere Whitson Building. Auditions are held on campus during the school year and are open to anyone with an interest in theatre not only students in the theatre concentration.

For more information about the theatre program visit our homepage at www.tntech.edu/bdph/ or contact Mark Creter at mcreter@tntech.edu or James Lyle Alder at jlalder@tntech.edu.



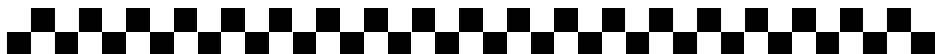
MUSIC BY

Michael Gore (music) In 1981, he won two Academy Awards for the movie *Fame* - one for Best Original Score, and a second for Best Song with lyricist Dean Pitchford. He was also nominated that year for "Out Here On My Own," from the same film.

In addition, *Fame* won the Golden Globe for Best Song, and was nominated for a Grammy. The movie's soundtrack sold in excess of 7 million copies worldwide. In addition to Executive Producing ABC's acclaimed 3-hour telefilm of Rodgers and Hammerstein's *South Pacific* starring Glenn Close and Harry Connick, Jr., he produced all the music for the film and its soundtrack recording. As a solo recording artist, he composed and performed "October Moon" for the CD *Song Without Words* for Windham Hill Records. The 2020 Grammy Awards celebrated longtime telecast producer Ken Ehrlich's 40th anniversary with a special all-star performance of Gore and Pitchford's "I Sing the Body Electric" from *Fame*.

BOOK BY

Lawrence D. Cohen (book and lyrics) Lawrence D. Cohen's first feature script was his adaptation of Stephen King's debut novel, *Carrie* (1976). His screenplay for the classic Brian de Palma film earned him an Edgar Award nomination from the Mystery Writers of America. After beginning his career as a film/theater critic for a number of leading periodicals, he worked as an assistant to famed Broadway director-choreographer Michael Bennett on the latter's Tony Award-winning *Twigs*, as well as the musical *Seesaw*. He discovered the screenplay and served as Production Executive on the 1975 Oscar-winning *Alice Doesn't Live Here Anymore*, and co-scripted Martin Scorsese's documentary, *Italianamerican*. Continuing his ongoing relationship with Stephen King in 1980, he wrote the 4-hour teleplay of *It*, which *USA Today* called "the scariest movie ever made for TV." *It* and Cohen's subsequent adaptation of King's *The Tommyknockers* (1993) became two of the network's highest-rated miniseries.





Michel Gore



Dean Pitchford



L. D. Cohen



Stephen King

LYRICS BY

Dean Pitchford (lyrics) Born and raised in Hawaii and graduated from Yale University, he performed off- and on-Broadway (*Godspell*; *Pippin*) before turning to songwriting, screenwriting and directing. Dean was nominated for four Academy Awards (winning the 1981 Best Song Oscar for "Fame," co-written w/ Michael Gore), three Golden Globes (winning for "Fame"), eight Grammys and two Tonys; his songs - recorded by such artists as Barbra Streisand, Whitney Houston, Cher, Peter Allen, LL Cool J, Kenny Loggins, Hugh Jackman, Dolly Parton, Bette Midler and Martina McBride - have sold over 70 million records.

BASED ON THE NOVEL BY

Stephen King (novelist) New York Times bestselling author and legendary storyteller Stephen King was born in Portland, Maine in 1947, the second son of Donald and Nellie Ruth Pillsbury King. He made his first professional short story sale in 1967 to *Startling Mystery Stories*. In the fall of 1973, he began teaching high school English classes at Hampden Academy, the public high school in Hampden, Maine. Writing in the evenings and on the weekends, he continued to produce short stories and to work on novels. In the spring of 1973, Doubleday & Co. accepted his first novel *Carrie* for publication, providing him the means to leave teaching and write full-time; it propelled him to mainstream literary stardom. He has since published over 50 books and has become one of the world's most successful writers. Stephen lives in Maine and Florida with his wife, novelist Tabitha King. They are regular contributors to a number of charities, including many libraries, and have been honored locally for their philanthropic activities.

**The 69th Season of the
Tech Players Drama Club
on the Campus of TN Tech. Nice!**

Autumn 2023

Carrie the Musical

by Michael Gore, Dean Pitchford,
Lawrence D. Cohen

Winter 2024

Presented by Chinkapin Craftstead

I Am My Own Wife

By

Doug Wright

Sponsored by Center Stage

March 7, 8, 9, 2024 at 8:00 p.m.

Spring 2024

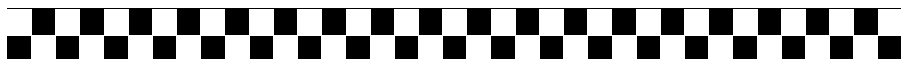
The Witch

by Jen Silverman

April 13-22, 2024

**Search “Tech Players” on your favorite
Social Media sites and give us a *follow* to receive the most
up to date information on upcoming productions, events,
the special behind-the-scenes photos/videos of our theatre
and its wonderful Players!**

For further information please contact Mark Creter at
931-372-3478 or mcreter@tntech.edu. Visit our webpage at
www.tntech.edu/bdph/.



Theatrical Activities Around Cookeville

A Midsummer Night's Dream

by William Shakespeare

Directed by Shane Cunningham

Cookeville High School

November 2-4, 2023

Rodgers and Hammerstein's Cinderella

CPAC

Directed by Jennifer Welch

Cookeville Children's Theatre

Nov. 3-18, 2023

***Launch Day* by Michael Higgins**

Directed by Kim Frick-Welker

CPAC Backstage Series

January 19-27, 2024

The Adventure of the Speckled Band

A Sherlock Holmes Mystery

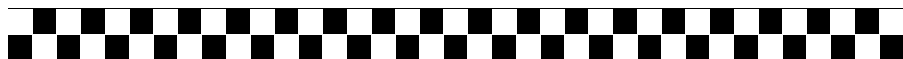
By Arthur Conan Doyle

Directed by Aaron Ramsey

CPAC Backstage Series

February 23-March 2, 2024

**Please support theatre on our campus and
in our community!**





**Miss Dorothy Printz Pennebaker,
the Patron Saint of the
Backdoor Playhouse.**

The Dorothy Printz-Pennebaker Memorial Production Fund is an endowment established in 1991 to support the Tech Players annual spring production.

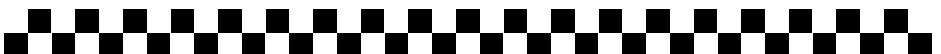
The endowment was established by her daughter, Dr. Martha Lee Osborne, a retired Professor of Philosophy and former chairperson of the Women's Studies Program at the University of Tennessee-Knoxville. Miss Pennebaker, a member of Tennessee Tech's English faculty from 1946 until her retirement in 1972, died in 1989 at the age of 82.

"My mother was a dedicated teacher," Osborne said. "Her personal effects include countless letters from students and former students who attribute their academic success largely to encouragement and caring."

As sponsor of the English Club, Pennebaker was co-founder of "Homespun", Tennessee Tech's first literary magazine and of the Tech Players, the university's first dramatic society. She was instrumental in bringing the first chapter of Alpha Psi Omega National Dramatic Honor Society to the campus.

Anyone wishing to make a contribution to the endowment may do so by writing to the Office of University Advancement, P.O. Box 5111, Cookeville, TN 38505, or calling (931) 372-3206.

(From the Cookeville Herald-Citizen, March 25, 1991)





Cafe, Desserts, Coffee & Catering

50 W Broad Street, Cookeville,
TN 38501

931-644-6179

Thank you to our Supporters!!



COSTUMES PROPS EVENTS

135 West Jackson Street
Cookeville, Tennessee
(931) 559-PROP (7767)

Spotlightcostumes.net

STUDENT ORGANIZATIONS AT THE TTU BACKDOOR PLAYHOUSE



Tech Players Drama Club

The official drama club of TTU celebrates its 63rd season. Founded in 1954 by members of the senior class under the guidance of English faculty member Miss Dorothy Printz Pennebaker, the Tech Players continues to provide the campus and community with quality productions of both classic and contemporary plays. The Tech Players currently produce three shows a year in their newly renovated home in the Backdoor Playhouse located in the rear of the Jere Whitson Building. For further information about the TTU Tech Players, please contact Mark Creter at mcreter@tntech.edu or visit our website at www.tntech.edu/bdph.

Alpha Psi Omega Dramatic Honor Society

Originally chartered on May 13, 1957, the TTU chapter of Alpha Psi Omega, a national dramatic fraternity, was reactivated in the spring of 1993 by members of the Tech Players and faculty advisor Mark Creter. Current members invite interested students to become active in theatre at TTU. For further information about Alpha Psi Omega, please contact faculty advisor Mark Creter at mcreter@tntech.edu or visit our website at www.tntech.edu/bdph.

Special Thanks To...

OUR LOYAL PATRONS

★ Clay Robertson	★ \$1,000.00
★ Scott Muir	★ \$ 500.00
★ Dana Grantham	★ \$ 500.00
★ Jere Mitchum	★ \$ 200.00
★ Evan & Dierdre Cole	★ \$ 100.00
★ Michael & Michelle O'Rourke	★ \$ 100.00
★ Julia Gruber & Jon Jonakin	★ \$ 100.00
★ Rita Barnes	★ \$ 100.00
★ Chad & Sarah McDonald	★ \$ 100.00
★ Alan & Joyce Tatum	★ \$ 100.00
★ Glennys Ulsehak	★ \$ 100.00
★ Steve & Robin Stark	★ \$ 100.00
★ Paul Hammonds	★ \$ 50.00
★ Susan Frey	★ \$ 50.00
★ Shirley Laird	★ \$ 40.00
★ Del and Linda Delventhal	★ \$ 30.00

★ Please consider becoming a patron.
★ Donations of any amount will help
★ our program continue to grow.
★ Please use form on back page of the program.

OUR FAITHFUL SUPPORTERS

★ Cookeville Performing Arts Center, Stage One Dance Studio,
★ Center Stage, Linda Fisk, Jill Herren, Jordyn Strilecky,
★ Graham and Bettye Kash, Albert and Pat Wilhelm, Steve
★ Gwilt, Kathy and Michael Gilpatrick, Melissa Powell,
★ Herald-Citizen, TTU Photographic Services, Public Affairs,
★ and Chartwell's Catering.

Become a Patron of the Playhouse!

We implore you to become a member of our patron's organization. Your tax-deductible contribution, along with funds provided by the University and the Center Stage Series, will be used to support our annual theatre season. If you desire, donations can be marked for certain parts of the theatre, such as lighting or sound equipment. Please sign up now and become a patron by making a tax-deductible contribution to the
TN Tech Theatre Program.

Mail to: TN Theatre Program
 Backdoor Playhouse
 Box 5045
 Cookeville, TN 38505

Name _____

Address _____

Phone # _____

E-mail _____

Amount of gift _____

_____ Please add me to your mailing/e-mail list.

