

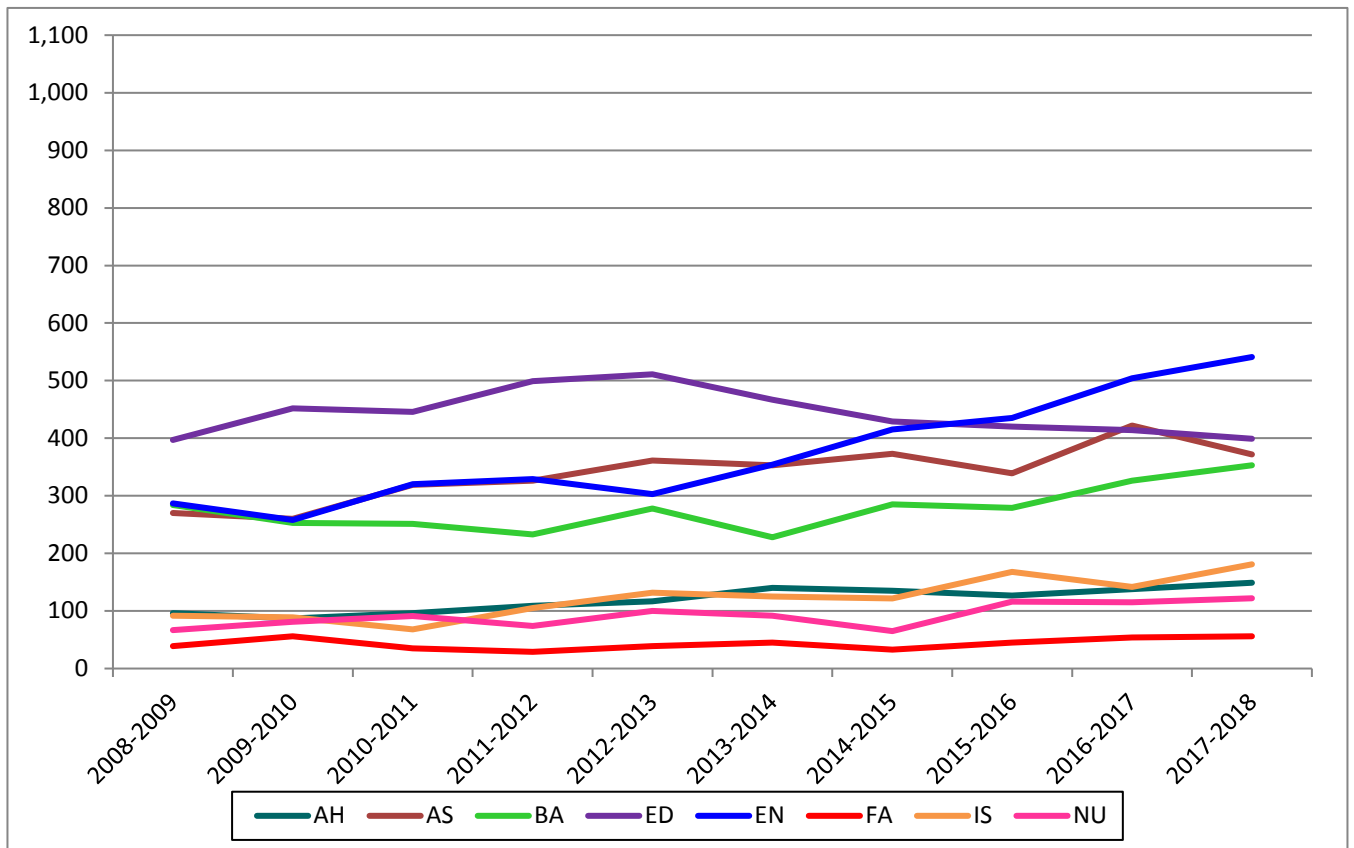
Degrees Conferred by Level and Unit

Tables 1 and 2 display undergraduate and graduate degrees, respectively, by unit. Table 3 shows all degrees conferred, by unit.

AH:	Agriculture & Human Ecology	ED:	Education	IS:	Interdisciplinary Studies
AS:	Arts & Sciences	EN:	Engineering	NU:	Nursing
BA:	Business	FA:	Fine Arts		

1. Undergraduate Degrees

2008-2009	2009-2010	2010-2011	2011-2012	2012-2013	2013-2014	2014-2015	2015-2016	2016-2017	2017-2018	3-Yr % Change	1-Yr % Change	
96	87	96	109	117	140	135	127	138	149	10.4%	8.0%	AH
270	260	319	326	361	353	373	339	422	372	-0.3%	-11.8%	AS
284	253	251	233	278	228	285	279	326	353	23.9%	8.3%	BA
397	452	446	499	511	467	429	420	414	399	-7.0%	-3.6%	ED
287	258	320	329	303	354	415	435	504	541	30.4%	7.3%	EN
39	56	35	29	39	45	33	45	54	56	69.7%	3.7%	FA
92	89	68	105	132	125	122	168	142	181	48.4%	27.5%	IS
67	81	91	74	100	92	65	116	115	122	87.7%	6.1%	NU
1,532	1,536	1,626	1,704	1,841	1,804	1,857	1,929	2,115	2,173	17.0%	2.7%	ALL

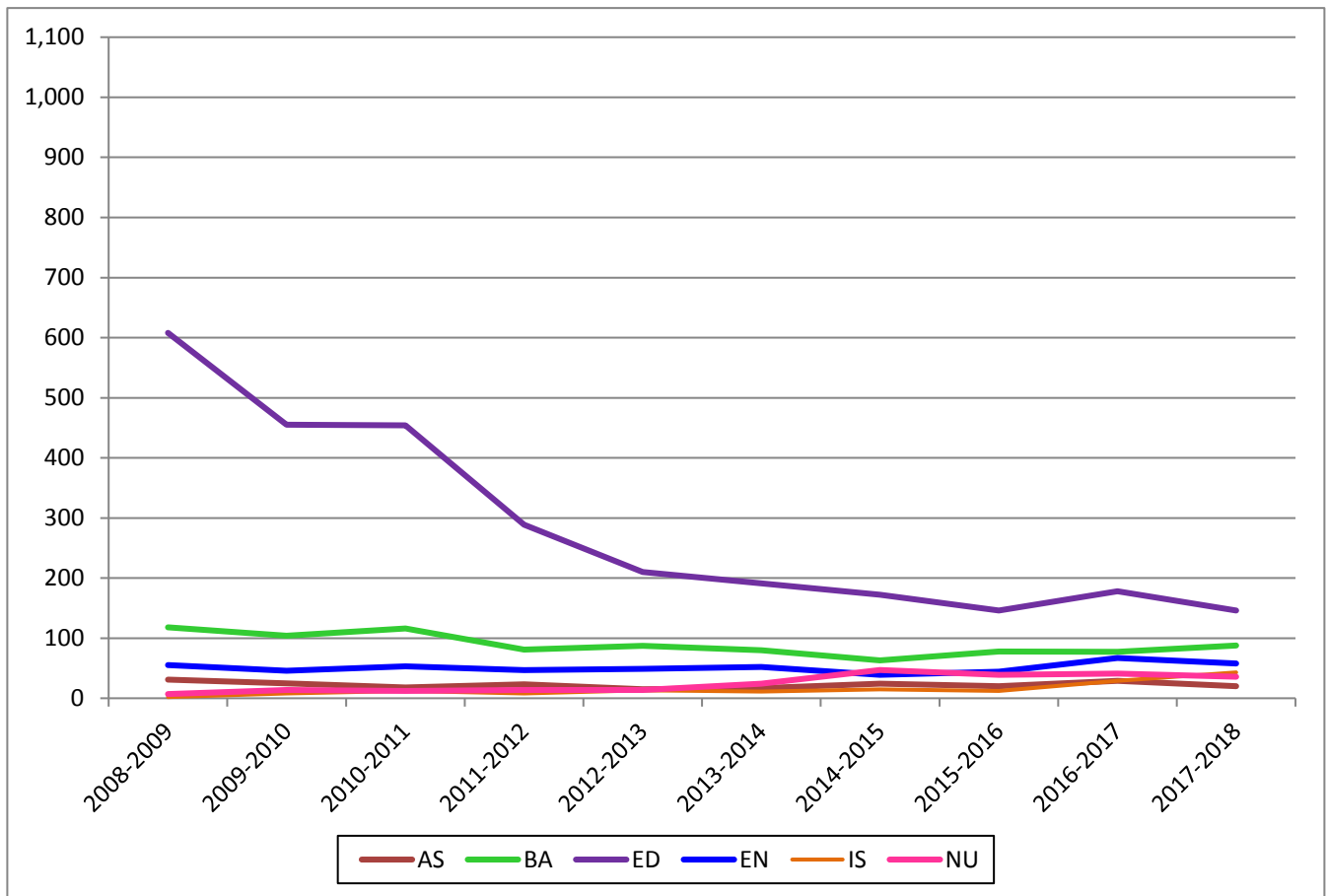


AS: Arts & Sciences
 BA: Business
 ED: Education

EN: Engineering
 IS: Interdisciplinary Studies
 NU: Nursing

2. Graduate Degrees*

2008-2009	2009-2010	2010-2011	2011-2012	2012-2013	2013-2014	2014-2015	2015-2016	2016-2017	2017-2018	3-Yr % Change	1-Yr % Change	
31	25	18	23	15	17	24	20	29	20	-16.7%	-31.0%	AS
118	104	116	81	87	80	63	78	77	88	39.7%	14.3%	BA
608	455	454	289	210	191	172	146	178	146	-15.1%	-18.0%	ED
55	46	53	47	49	52	39	44	67	58	48.7%	-13.4%	EN
2	8	12	8	13	11	15	12	29	43	186.7%	48.3%	IS
7	14	12	14	14	24	47	39	41	36	-23.4%	-12.2%	NU
821	652	665	462	388	375	360	339	421	391	8.6%	-7.1%	ALL

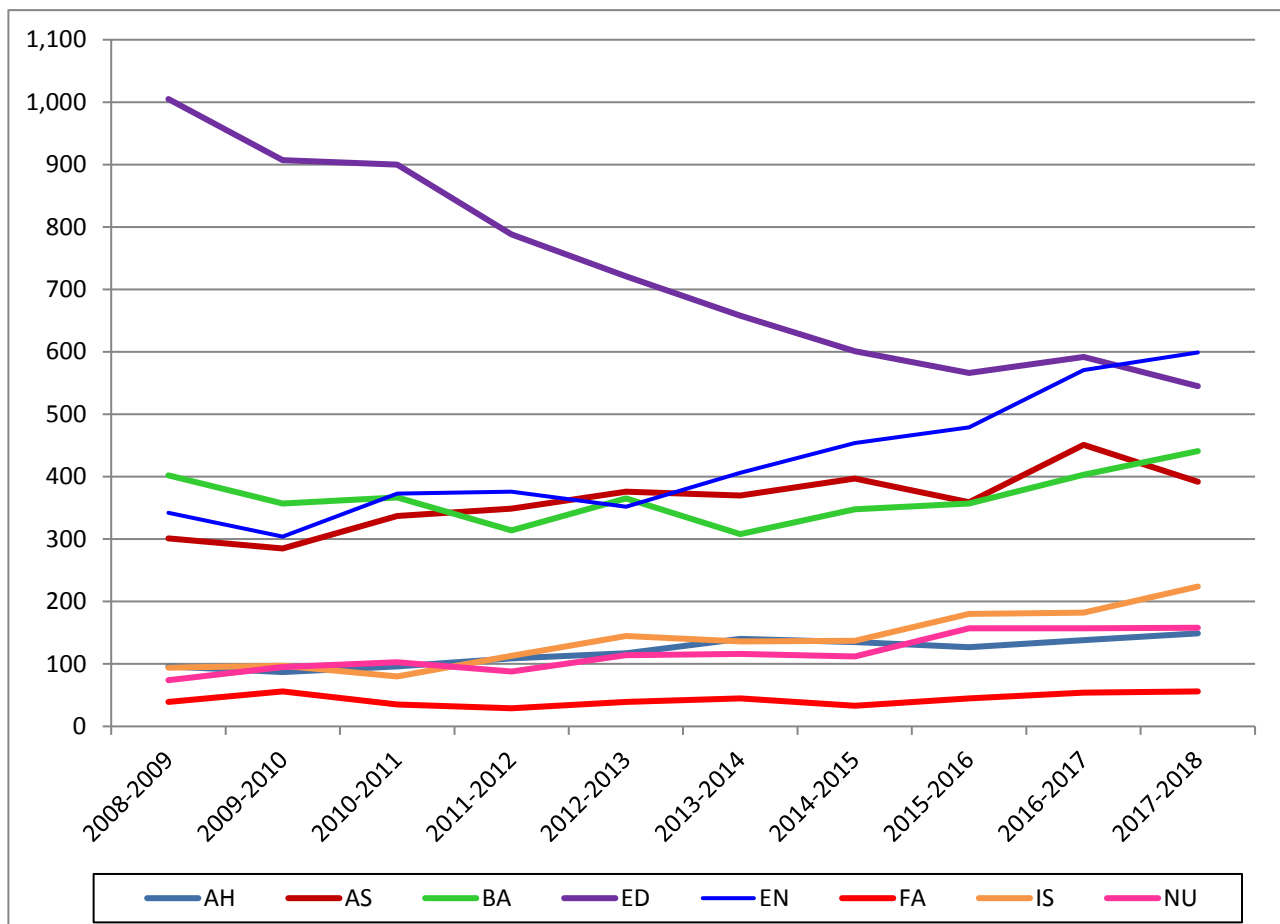


* Beginning in 2015-2016, post-bachelor's and post-master's certificates are included

AH: Agriculture & Human Ecology	ED: Education	IS: Interdisciplinary Studies
AS: Arts & Sciences	EN: Engineering	NU: Nursing
BA: Business	FA: Fine Arts	

3. All Degrees*

2008-2009	2009-2010	2010-2011	2011-2012	2012-2013	2013-2014	2014-2015	2015-2016	2016-2017	2017-2018	3-Yr % Change	1-Yr % Change	
96	87	96	109	117	140	135	127	138	149	10.4%	8.0%	AH
301	285	337	349	376	370	397	359	451	392	-1.3%	-13.1%	AS
402	357	367	314	365	308	348	357	403	441	26.7%	9.4%	BA
1,005	907	900	788	721	658	601	566	592	545	-9.3%	-7.9%	ED
342	304	373	376	352	406	454	479	571	599	31.9%	4.9%	EN
39	56	35	29	39	45	33	45	54	56	69.7%	3.7%	FA
94	97	80	113	145	136	137	180	182	224	63.5%	23.1%	IS
74	95	103	88	114	116	112	157	157	158	41.1%	0.6%	NU
2,353	2,188	2,291	2,166	2,229	2,179	2,217	2,270	2,548	2,564	15.7%	0.6%	ALL



* Beginning in 2015-2016, post-bachelor's and post-master's certificates are included