

# Tennessee Tech

## *Institutional Research*

### **Full-Time-Equivalent Enrollment and Student Credit Hours By Instructional Site Type**

This report contains information about Tennessee Tech full-time-equivalent enrollment and student credit hours on the main campus, at off-campus locations, and through distance education in Fall 2008 through Fall 2018. Measures of student credit hours (SCH) and the derived full-time-equivalent students (FTES) are summarized in Table 1 for the three types of instructional sites: (a) main campus (excluding distance education), (b) off-campus locations (excluding distance education), and (c) distance education.

Table 2 displays FTES information on the main campus, at off-campus locations, and through distance education in Fall 2008 through Fall 2018 and provides the recent one-year and three-year percentage changes in FTES. Table 3 displays SCH information for the same period.

**1. Full-Time-Equivalent (FTE) Enrollment:**

Student credit hours are used as the measure of instructional activity in this report, and these hours can be compiled by type of instructional site. Then, full-time-equivalent students (FTES) can be calculated with a definition from the Tennessee Higher Education Commission. To determine the number of FTE students, the quantity of undergraduate student credit hours is divided by 15, and the quantity of graduate student credit hours is divided by 12. The resulting quotients are the FTES or FTE enrollment.

**2. Compilation by Level of Course (and Not By Level of Student):**

Student credit hours in this report were compiled by the level of the *course* and not by the level of the student. For example, in this report, if a graduate student were enrolled in a lower-division undergraduate course in foreign language, then the student credit hours for this student in the course would be compiled by the level of the course. Therefore, the student credit hours in this example would be compiled by the level of the course: *undergraduate* student credit hours (instead of by the level of the student, which is graduate).

With compilation by the level of the *course*, the information in this report for undergraduate level or for graduate level will not precisely match a compilation by level of *student*. For example, FTE enrollment in this report does not precisely match FTE enrollment in "Enrollment by Classification" report. It is different at the undergraduate or graduate level because that information was compiled by the level of the *student*.

**3. Courses of TTU Students:**

This report contains information about student credit hours for courses in which *TTU students* enrolled. This includes regular courses taught by TTU faculty, but it also can include Tennessee eCampus courses that are taught by TTU faculty or are taught by faculty of some other Tennessee eCampus institution. If *TTU students* enrolled in the course, then student credit hours generated in the course are included in this report. Student credit hours for non-TTU students enrolled in TN eCampus courses that are taught by TTU faculty are *not* included in this report.

**Table 1**  
**Full-Time-Equivalent Enrollment By Instructional Site Type**  
**Three-Year and One-Year Percentage Changes to Fall 2018**

	Fall 2015 to to Fall 2018 3-Year % Change	Fall 2017 to Fall 2018 1-Year % Change
<b>Undergraduate</b>	<b>-7.9</b>	<b>-3.3</b>
A. Main Campus Without Distance Education	-10.6	-4.5
B. Off Campus Without Distance Education	10.4	-6.6
C. Distance Education	29.8	17.6
<b>Graduate</b>	<b>1.8</b>	<b>1.2</b>
A. Main Campus Without Distance Education	0.5	8.4
B. Off Campus Without Distance Education	75.0	5.0 *
C. Distance Education	2.7	-7.7
<b>All</b>	<b>-7.4</b>	<b>-3.0</b>
A. Main Campus Without Distance Education	-10.3	-4.1
B. Off Campus Without Distance Education	11.0	-6.4
C. Distance Education	21.7	10.0

\* FTE enrollment for Fall 2013, Fall 2014, Fall 2015, and Fall 2016 is less than 5.

**Table 2**  
**Full-Time-Equivalent Enrollment By Instructional Site Type**  
**Fall 2008 - Fall 2018**

2008	2009	2010	2011	2012	2013	2014	2015	2016	2017	2018	3-Yr % Change	1-Yr % Change	Fall
<b>7,576.7</b>	<b>8,117.6</b>	<b>8,582.7</b>	<b>8,887.9</b>	<b>8,972.0</b>	<b>9,169.1</b>	<b>9,311.9</b>	<b>8,834.7</b>	<b>8,554.4</b>	<b>8,413.7</b>	<b>8,138.6</b>	-7.9	-3.3	<b>Undergraduate</b>
6,933.6	7,345.1	7,794.5	7,966.3	8,121.8	8,353.4	8,524.4	8,106.3	7,824.8	7,589.3	7,244.4	-10.6	-4.5	<b>A. Main Campus Without Dist Educ</b>
422.1	367.1	371.1	395.5	381.3	359.9	302.7	263.7	285.5	311.5	291.1	10.4	-6.6	<b>B. Off Campus Without Dist Educ</b>
325.8	286.9	289.6	257.7	302.4	283.3	246.7	215.4	227.6	252.5	240.5	11.7	-4.8	2+2 Program
96.3	80.2	81.5	137.8	78.9	76.5	56.1	48.3	57.9	59.0	50.5	4.7	-14.4	Other Off-Campus Instruction
220.9	405.3	417.1	526.1	468.9	455.9	484.7	464.8	444.1	512.9	603.1	29.8	17.6	<b>C. Distance Education</b>
173.9	250.4	275.5	332.1	336.4	328.5	334.1	295.0	272.9	290.2	267.7	-9.3	-7.8	Tennessee eCampus
47.1	154.9	141.7	194.0	132.5	127.4	150.6	169.8	171.1	222.7	335.5	97.6	50.7	Other Online Instruction
<b>984.8</b>	<b>931.7</b>	<b>783.2</b>	<b>647.3</b>	<b>609.5</b>	<b>589.6</b>	<b>578.4</b>	<b>604.8</b>	<b>572.8</b>	<b>608.5</b>	<b>615.6</b>	1.8	1.2	<b>Graduate</b>
433.3	436.9	417.5	387.2	356.4	352.4	349.3	356.8	327.7	330.8	358.7	0.5	8.4	<b>A. Main Campus Without Dist Educ</b>
216.6	153.3	110.7	79.0	36.1	1.3	3.5	3.0	3.8	5.0	5.3	75.0	5.0	<b>B. Off Campus Without Dist Educ</b>
								0.8		0.3			2+2 Program
216.6	153.3	110.7	79.0	36.1	1.3	3.5	3.0	3.0	5.0	5.0	66.7	0.0	Other Off-Campus Instruction
334.9	341.4	255.0	181.1	217.0	235.8	225.7	245.0	241.3	272.8	251.7	2.7	-7.7	<b>C. Distance Education</b>
47.2	48.5	57.4	51.9	70.7	89.3	96.2	85.0	81.6	85.0	53.3	-37.3	-37.3	Tennessee eCampus
93.8	82.0	82.0	72.3	77.3	72.0	74.0	87.0	82.5	84.0	70.8	-18.7	-15.8	Distance MBA
31.5	26.0	27.0	26.8	23.8	23.3	27.0	39.0	28.0	28.8	31.1	-20.3	8.1	Distance EXPW
162.5	184.9	88.6	30.2	45.3	51.3	28.5	34.0	49.3	75.0	96.5	183.8	28.7	Other Online Instruction
<b>8,561.4</b>	<b>9,049.3</b>	<b>9,365.8</b>	<b>9,535.2</b>	<b>9,581.5</b>	<b>9,758.7</b>	<b>9,890.3</b>	<b>9,439.6</b>	<b>9,127.2</b>	<b>9,022.2</b>	<b>8,754.2</b>	-7.4	-3.0	<b>All</b>
7,366.9	7,782.1	8,212.0	8,353.5	8,478.2	8,705.8	8,873.7	8,463.1	8,152.5	7,920.1	7,603.1	-10.3	-4.1	<b>A. Main Campus Without Dist Educ</b>
638.7	520.5	481.7	474.5	417.4	361.2	306.2	266.7	289.3	316.5	296.3	11.0	-6.4	<b>B. Off Campus Without Dist Educ</b>
325.8	286.9	289.6	257.7	302.4	283.3	246.7	215.4	228.4	252.5	240.8	11.8	-4.7	2+2 Program
312.9	233.5	192.1	216.8	115.0	77.9	59.6	51.3	60.9	64.0	55.5	7.6	-13.4	Other Off-Campus Instruction
555.9	746.8	672.1	707.2	685.9	691.7	710.4	709.8	685.4	785.6	854.8	21.7	10.0	<b>C. Distance Education</b>
221.0	298.9	332.9	384.0	407.1	417.8	430.3	380.0	354.5	375.2	321.0	-14.5	-13.4	Tennessee eCampus
93.8	82.0	82.0	72.3	77.3	72.0	74.0	87.0	82.5	84.0	70.8	-18.7	-15.8	Distance MBA
31.5	26.0	27.0	26.8	23.8	23.3	27.0	39.0	28.0	28.8	31.1	-20.3	8.1	Distance EXPW
209.6	339.9	230.3	224.2	177.9	178.7	179.1	203.8	220.4	297.7	432.0	109.5	46.0	Other Online Instruction

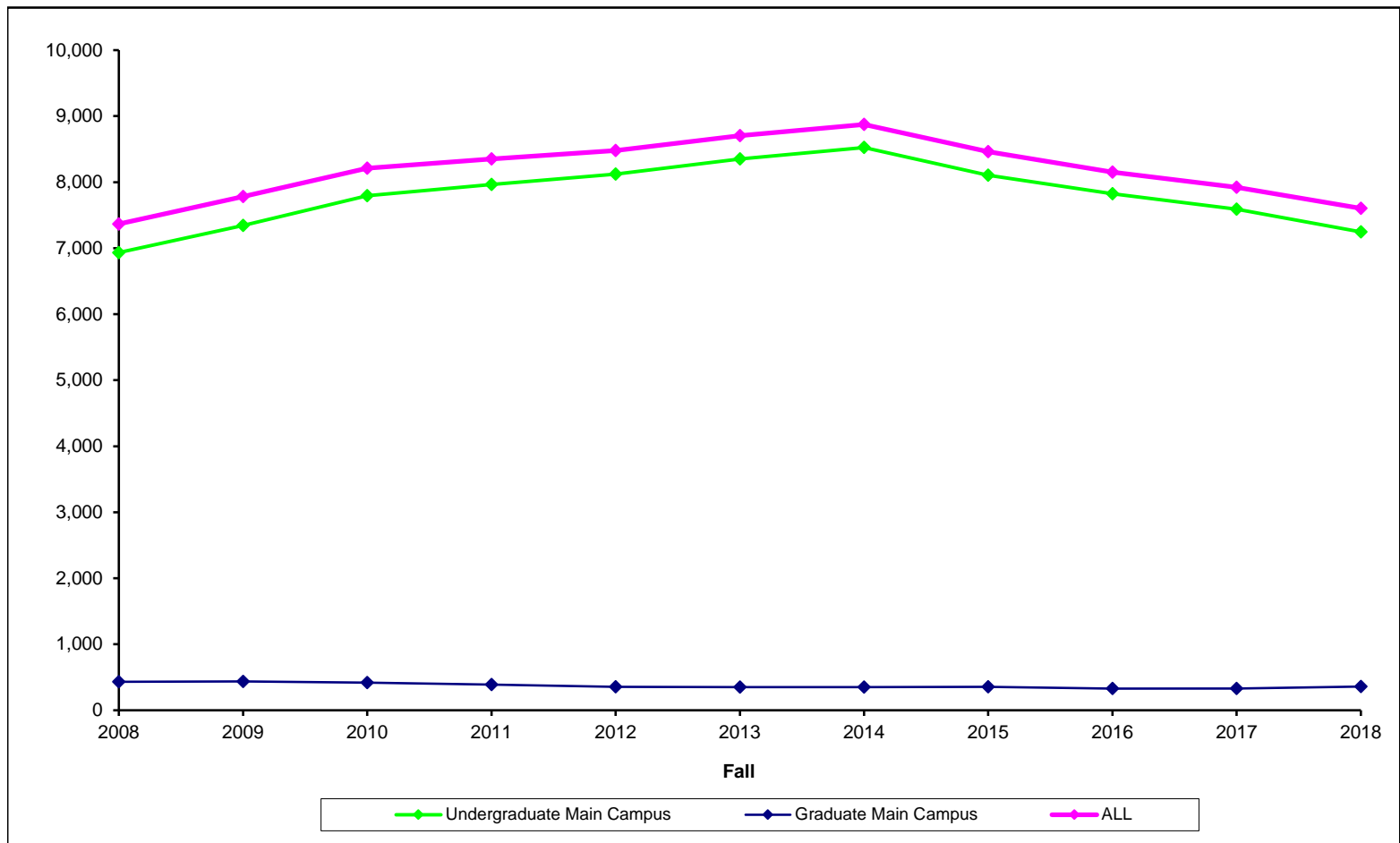
Note: Percent change information from this table is summarized in Table 1.

**Table 3**  
**Student Credit Hours By Instructional Site Type**  
**Fall 2008 - Fall 2018**

2008	2009	2010	2011	2012	2013	2014	2015	2016	2017	2018	3-Yr % Change	1-Yr % Change	Fall
<b>113,650</b>	<b>121,764</b>	<b>128,740</b>	<b>133,319</b>	<b>134,580</b>	<b>137,537</b>	<b>139,678</b>	<b>132,521</b>	<b>128,316</b>	<b>126,206</b>	<b>122,079</b>	-7.9	-3.3	<b>Undergraduate</b>
104,004	110,177	116,917	119,495	121,827	125,301	127,866	121,594	117,372	113,840	108,666	-10.6	-4.5	<b>A. Main Campus Without Dist Educ</b>
6,332	5,507	5,566	5,933	5,719	5,398	4,541	3,955	4,283	4,673	4,366	10.4	-6.6	<b>B. Off Campus Without Dist Educ</b>
4,887	4,304	4,344	3,866	4,536	4,250	3,700	3,231	3,414	3,788	3,608	11.7	-4.8	2+2 Program
1,445	1,203	1,222	2,067	1,183	1,148	841	724	869	885	758	4.7	-14.4	Other Off-Campus Instruction
3,314	6,080	6,257	7,891	7,034	6,838	7,271	6,972	6,661	7,693	9,047	29.8	17.6	<b>C. Distance Education</b>
2,608	3,756	4,132	4,981	5,046	4,927	5,012	4,425	4,094	4,353	4,015	-9.3	-7.8	Tennessee eCampus
706	2,324	2,125	2,910	1,988	1,911	2,259	2,547	2,567	3,340	5,032	97.6	50.7	Other Online Instruction
<b>11,817</b>	<b>11,180</b>	<b>9,398</b>	<b>7,767</b>	<b>7,314</b>	<b>7,075</b>	<b>6,941</b>	<b>7,258</b>	<b>6,873</b>	<b>7,302</b>	<b>7,387</b>	1.8	1.2	<b>Graduate</b>
5,199	5,243	5,010	4,646	4,277	4,229	4,191	4,282	3,932	3,969	4,304	0.5	8.4	<b>A. Main Campus Without Dist Educ</b>
2,599	1,840	1,328	948	433	16	42	36	45	60	63	75.0	5.0	<b>B. Off Campus Without Dist Educ</b>
								9		3			2+2 Program
2,599	1,840	1,328	948	433	16	42	36	36	60	60	66.7	0.0	Other Off-Campus Instruction
4,019	4,097	3,060	2,173	2,604	2,830	2,708	2,940	2,896	3,273	3,020	2.7	-7.7	<b>C. Distance Education</b>
566	582	689	623	848	1,072	1,154	1,020	979	1,020	640	-37.3	-37.3	Tennessee eCampus
1,125	984	984	867	927	864	888	1,044	990	1,008	849	-18.7	-15.8	Distance MBA
378	312	324	321	285	279	324	468	336	345	373	-20.3	8.1	Distance EXPW
1,950	2,219	1,063	362	544	615	342	408	591	900	1,158	183.8	28.7	Other Online Instruction
<b>125,467</b>	<b>132,944</b>	<b>138,138</b>	<b>141,086</b>	<b>141,894</b>	<b>144,612</b>	<b>146,619</b>	<b>139,779</b>	<b>135,189</b>	<b>133,508</b>	<b>129,466</b>	-7.4	-3.0	<b>All</b>
109,203	115,420	121,927	124,141	126,104	129,530	132,057	125,876	121,304	117,809	112,970	-10.3	-4.1	<b>A. Main Campus Without Dist Educ</b>
8,931	7,347	6,894	6,881	6,152	5,414	4,583	3,991	4,328	4,733	4,429	11.0	-6.4	<b>B. Off Campus Without Dist Educ</b>
4,887	4,304	4,344	3,866	4,536	4,250	3,700	3,231	3,423	3,788	3,611	11.8	-4.7	2+2 Program
4,044	3,043	2,550	3,015	1,616	1,164	883	760	905	945	818	7.6	-13.4	Other Off-Campus Instruction
7,333	10,177	9,317	10,064	9,638	9,668	9,979	9,912	9,557	10,966	12,067	21.7	10.0	<b>C. Distance Education</b>
3,174	4,338	4,821	5,604	5,894	5,999	6,166	5,445	5,073	5,373	4,655	-14.5	-13.4	Tennessee eCampus
1,125	984	984	867	927	864	888	1,044	990	1,008	849	-18.7	-15.8	Distance MBA
378	312	324	321	285	279	324	468	336	345	373	-20.3	8.1	Distance EXPW
2,656	4,543	3,188	3,272	2,532	2,526	2,601	2,955	3,158	4,240	6,190	109.5	46.0	Other Online Instruction

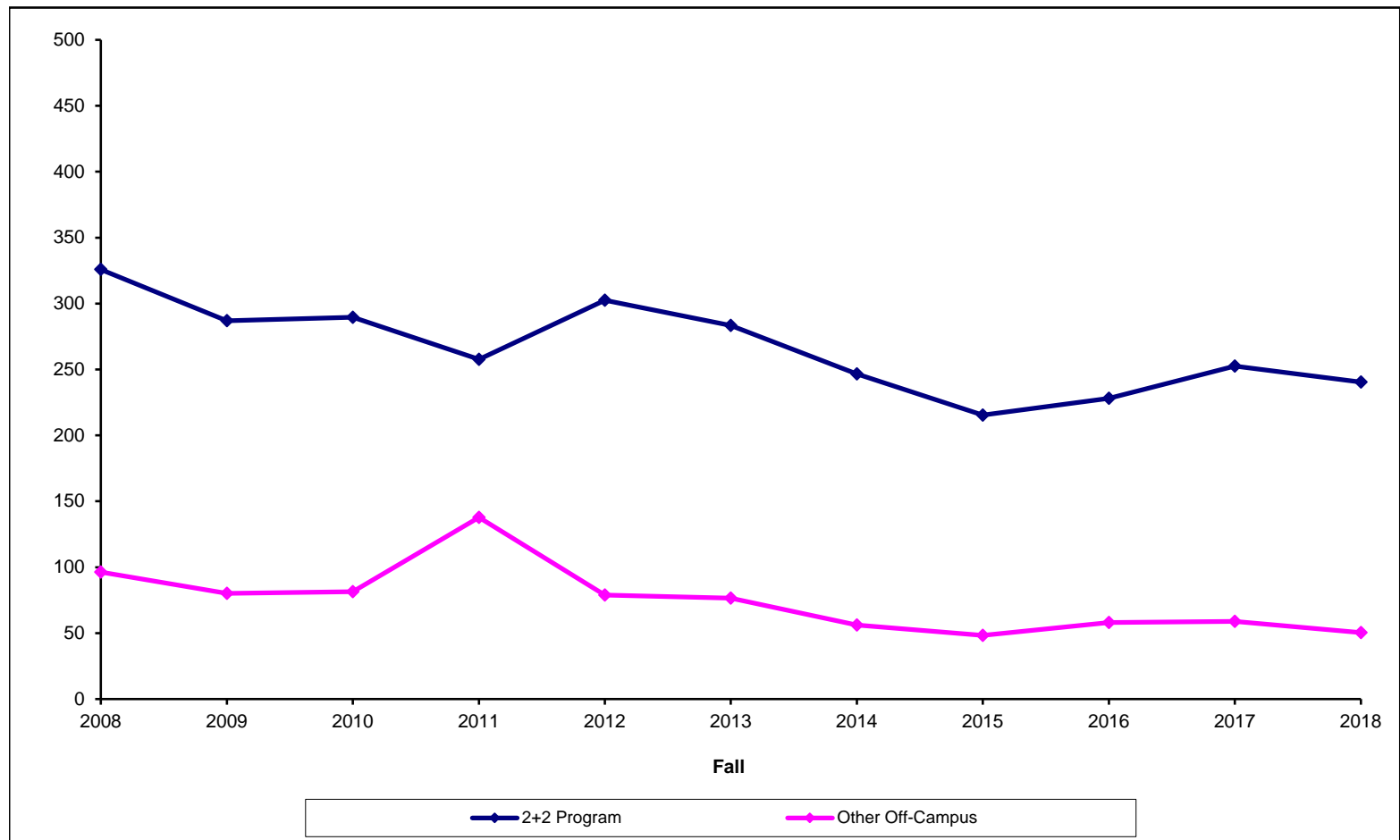
### A. Main Campus Without Distance Education Full-Time-Equivalent Enrollment Fall 2008 - 2018

	2008	2009	2010	2011	2012	2013	2014	2015	2016	2017	2018	% Change from 2015 to 2018
Undergraduate Main Campus	6,934	7,345	7,794	7,966	8,122	8,353	8,524	8,106	7,825	7,589	7,244	-10.6%
Graduate Main Campus	433	437	418	387	356	352	349	357	328	331	359	0.5%
ALL	7,367	7,782	8,212	8,354	8,478	8,706	8,874	8,463	8,153	7,920	7,603	-10.3%



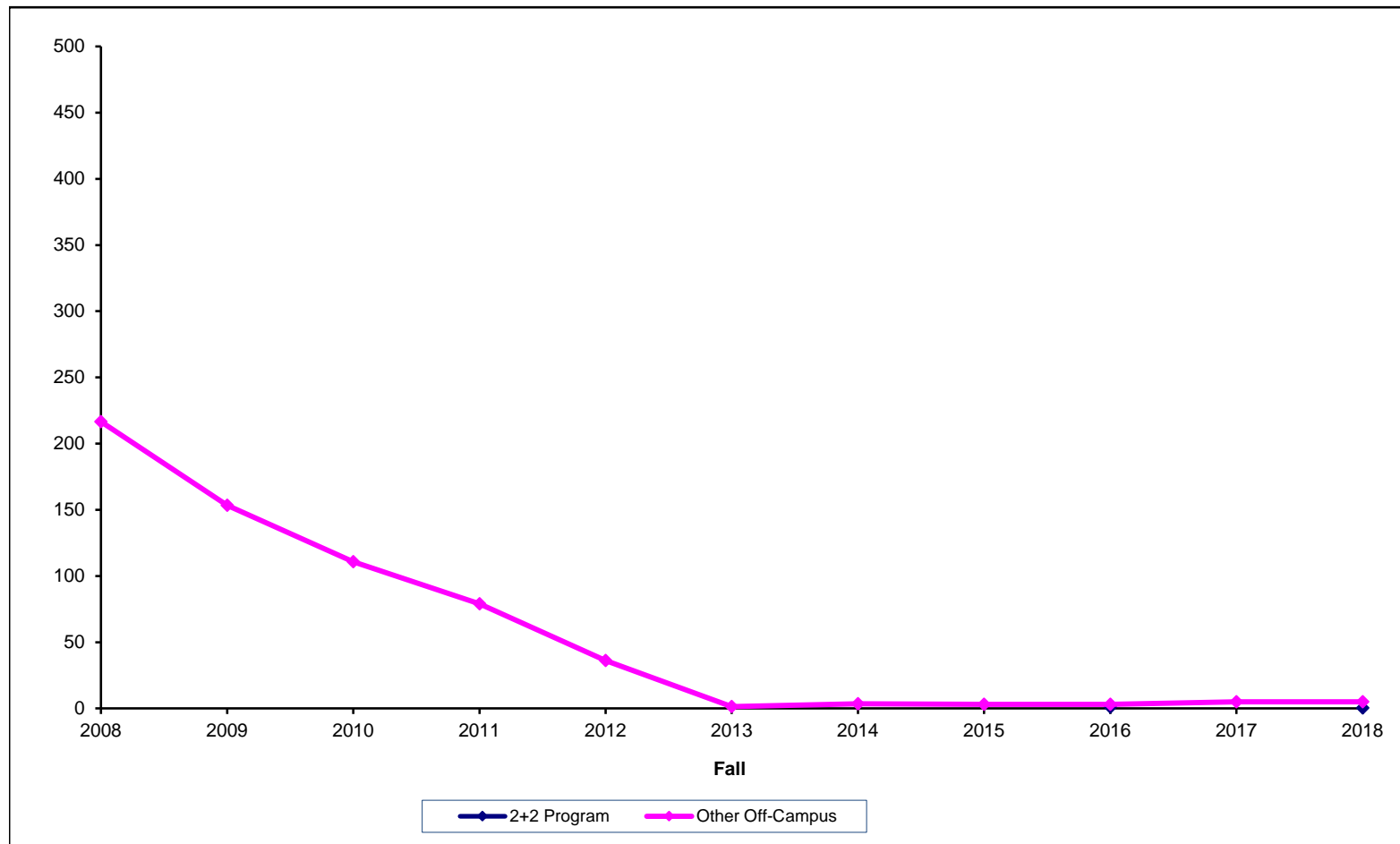
**B.1. Undergraduate Off-Campus Without Distance Education  
Full-Time-Equivalent Enrollment  
Fall 2008 - 2018**

	2008	2009	2010	2011	2012	2013	2014	2015	2016	2017	2018	% Change from 2015 to 2018
2+2 Program	326	287	290	258	302	283	247	215	228	253	241	11.7%
Other Off-Campus	96	80	81	138	79	77	56	48	58	59	51	4.7%
ALL	422	367	371	396	381	360	303	264	286	312	291	10.4%



**B.2. Graduate Off-Campus Without Distance Education  
Full-Time-Equivalent Enrollment  
Fall 2008 - 2018**

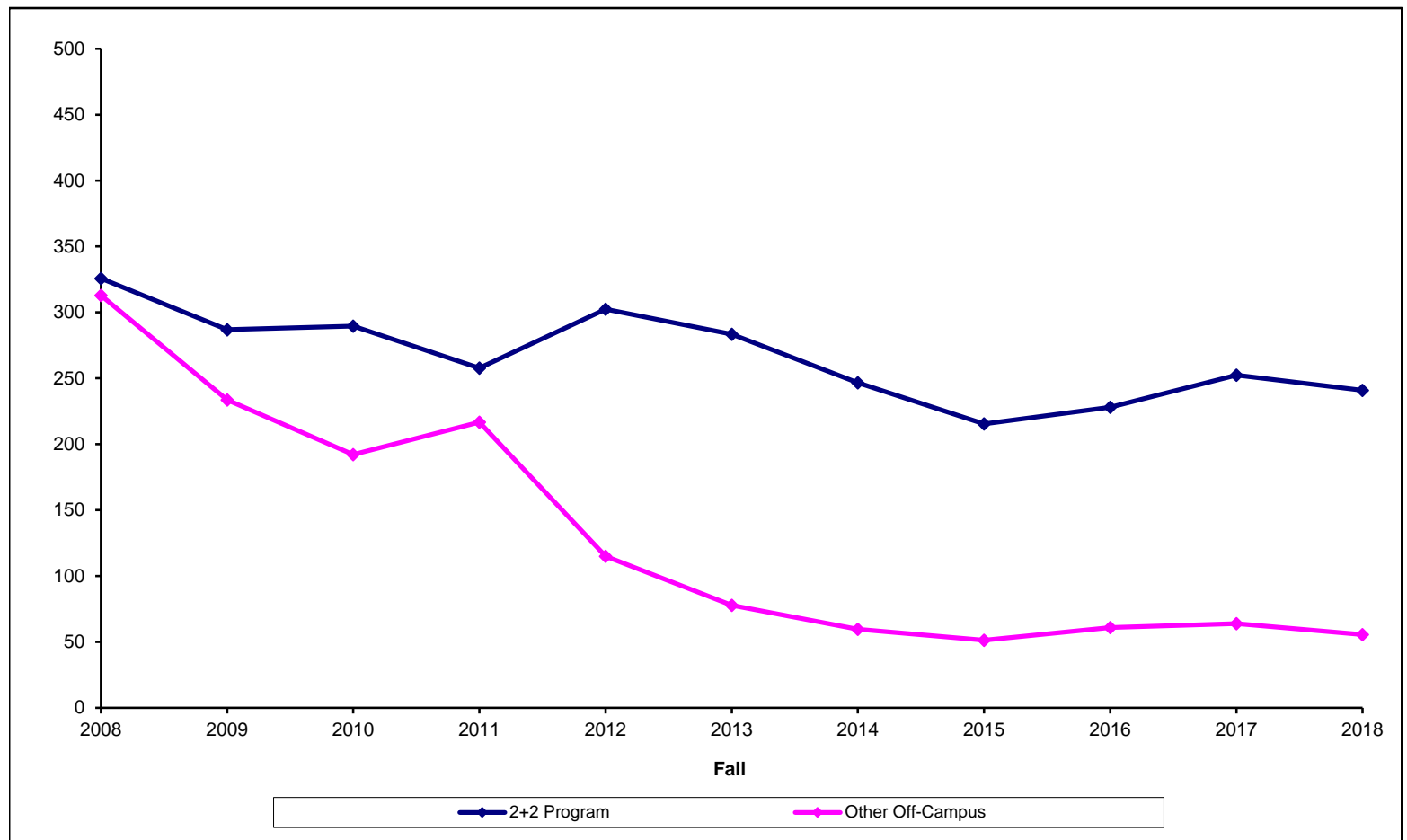
	2008	2009	2010	2011	2012	2013	2014	2015	2016	2017	2018	% Change from 2015 to 2018
2+2 Program									1		0	
Other Off-Campus	217	153	111	79	36	1	4	3	3	5	5	66.7%
ALL	217	153	111	79	36	1	4	3	4	5	5	75.0%





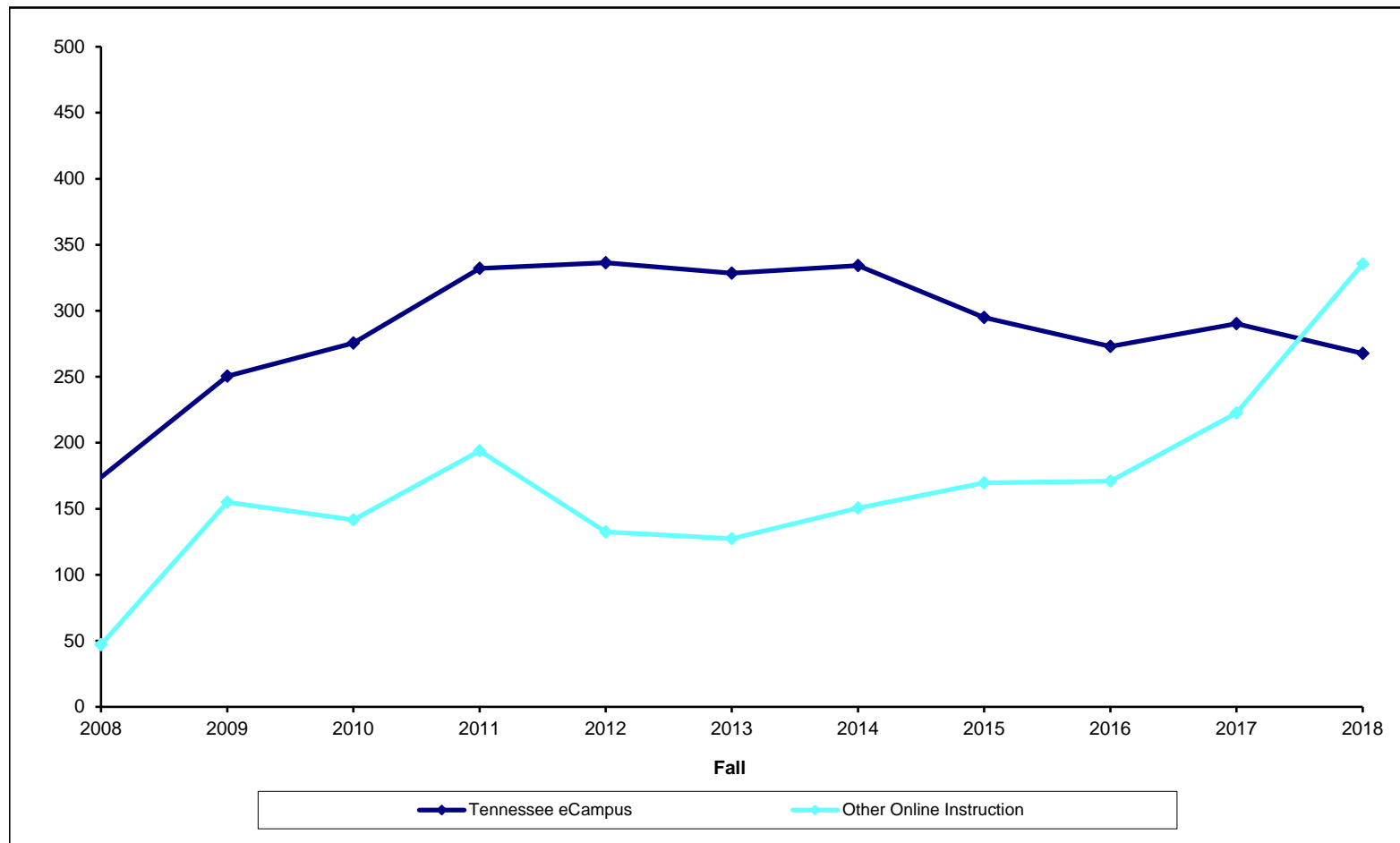
### B.3. Off-Campus Without Distance Education Full-Time-Equivalent Enrollment Fall 2008 - 2018

	2008	2009	2010	2011	2012	2013	2014	2015	2016	2017	2018	% Change from 2015 to 2018
2+2 Program	326	287	290	258	302	283	247	215	228	253	241	11.8%
Other Off-Campus	313	234	192	217	115	78	60	51	61	64	56	7.6%
ALL	639	520	482	475	417	361	306	267	289	317	296	11.0%



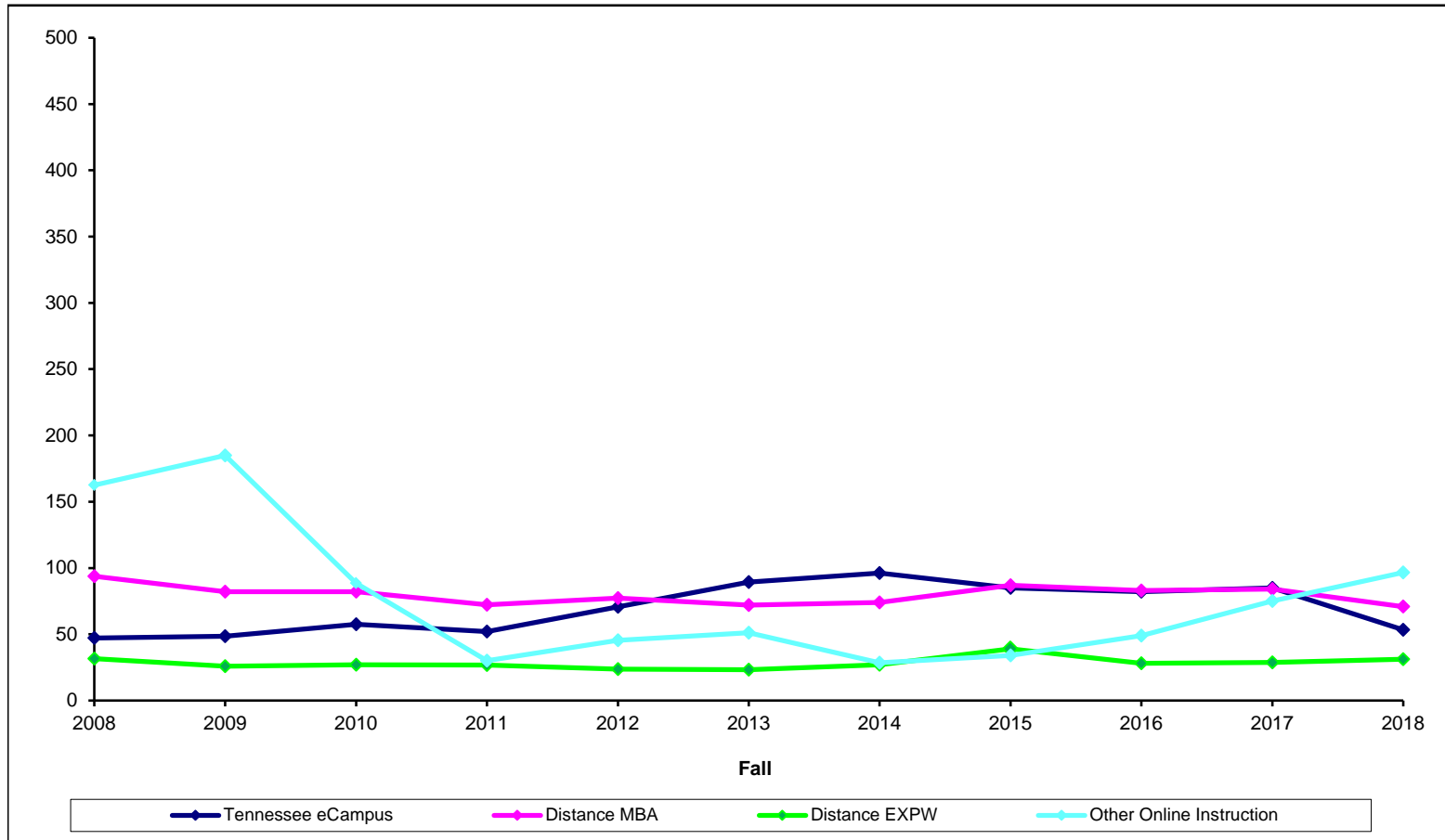
### C.1. Undergraduate Distance Education Full-Time-Equivalent Enrollment Fall 2008 - 2018

	2008	2009	2010	2011	2012	2013	2014	2015	2016	2017	2018	% Change from 2015 to 2018
Tennessee eCampus	174	250	275	332	336	328	334	295	273	290	268	-9.3%
Other Online Instruction	47	155	142	194	133	127	151	170	171	223	336	97.6%
ALL	221	405	417	526	469	456	485	465	444	513	603	29.8%



## C.2. Graduate Distance Education Full-Time-Equivalent Enrollment Fall 2008 - 2018

	2008	2009	2010	2011	2012	2013	2014	2015	2016	2017	2018	% Change from 2015 to 2018
Tennessee eCampus	47	49	57	52	71	89	96	85	82	85	53	-37.3%
Distance MBA	94	82	82	72	77	72	74	87	83	84	71	-18.7%
Distance EXPW	32	26	27	27	24	23	27	39	28	29	31	-20.3%
Other Online Instruction	163	185	89	30	45	51	29	34	49	75	97	183.8%
ALL	335	341	255	181	217	236	226	245	242	273	252	2.7%



### C.3. Distance Education Full-Time-Equivalent Enrollment Fall 2008 - 2018

	2008	2009	2010	2011	2012	2013	2014	2015	2016	2017	2018	% Change from 2015 to 2018
Tennessee eCampus	221	299	333	384	407	418	430	380	355	375	321	-14.5%
Distance MBA	94	82	82	72	77	72	74	87	83	84	71	-18.7%
Distance EXPW	32	26	27	27	24	23	27	39	28	29	31	-20.3%
Other Online Instruction	210	340	230	224	178	179	179	204	220	298	432	109.5%
ALL	556	747	672	707	686	692	710	710	686	786	855	21.7%

