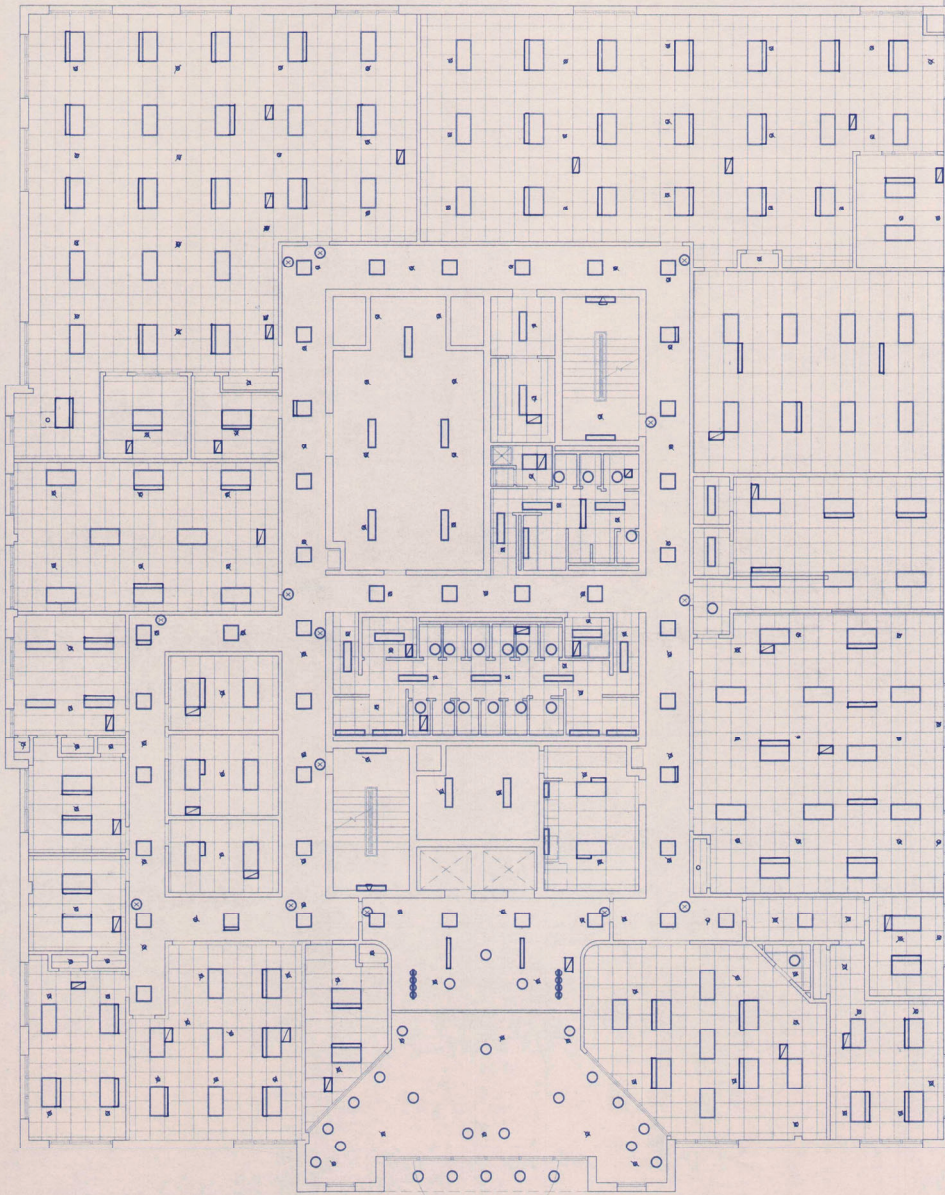


SECOND FLOOR REFLECTED CEILING PLAN
SCALE: 1/8" = 1'-0"



- LEGEND**
- 2x2' REC. FLUORESCENT FIXTURE
 - 2x2' REC. RECESSED IN-TRAY
 - RECESSED ANTI-Glare FIXTURE
 - EXIT LIGHT
 - SUPPLY AIR DIFFUSER
 - RETURN AIR GRILL
 - SPRINKLER HEAD
 - HANGING MOULT SPRINKLER HD.
 - SURFACE MOUNT TRACK LIGHT FIXTURE



A25
SHEET

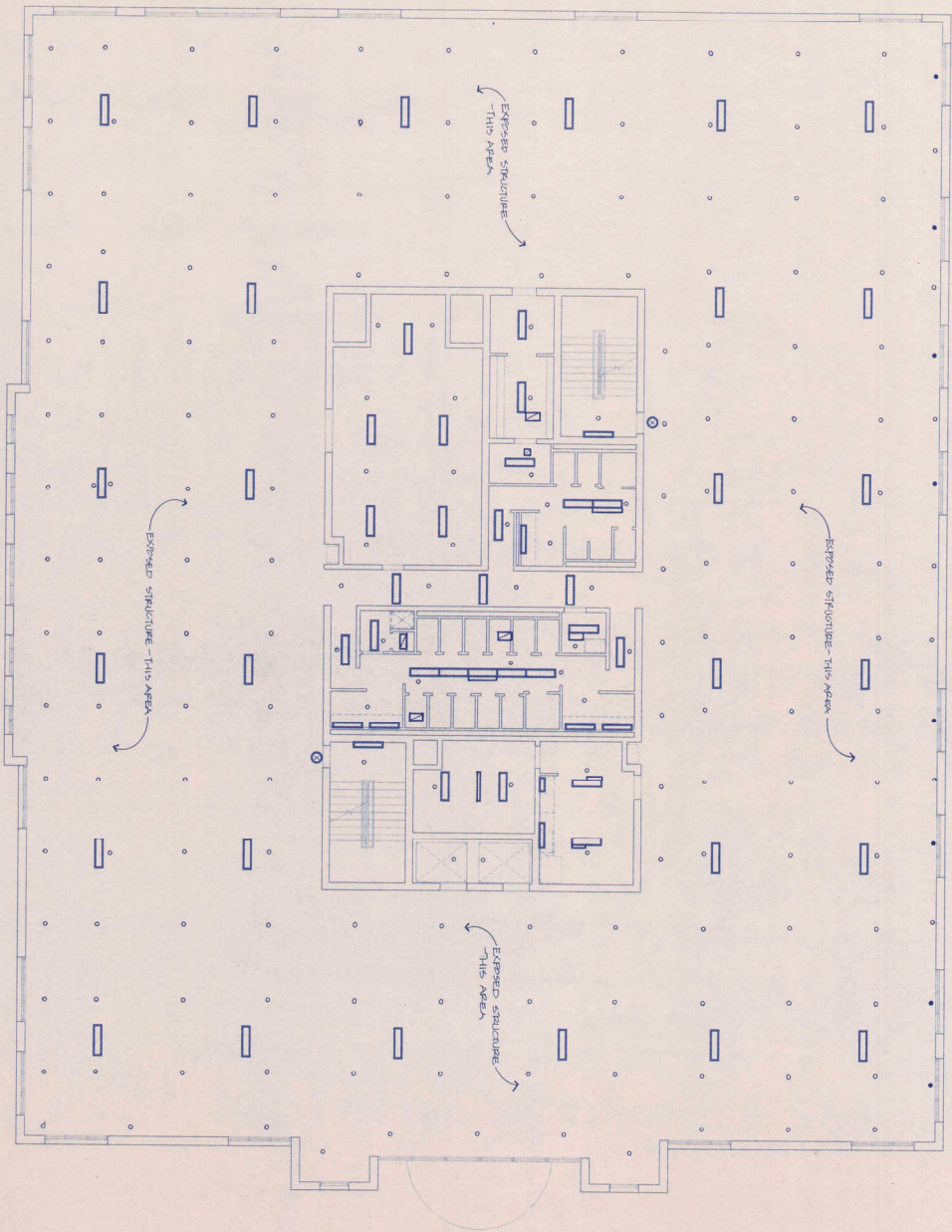
DATE: 7-1-95
SCALE: AS SHOWN
PROJECT: NEW OFFICES FOR TAP PUBLISHING CO.
DRAWN BY: [Signature]

NEW OFFICES FOR TAP PUBLISHING CO.
CROSSVILLE, TENNESSEE

Charles Pilgrim Architect
8560 Kingston Pike • Suite A202
Knoxville, Tennessee 37919 • (615)693-4741

REVISIONS	BY
01/19/95	AS

THIRD FLOOR REFLECTED CEILING PLAN
SCALE: 1/8" = 1'-0"



- LEGEND**
- 1/2" sq. x 1/2" ACoustICAL ceiling tile
 - 6" x 6" recessed fluorescent fixture
 - 2' x 4' recessed fluorescent fixture
 - recessed downlight fixture
 - EXIT LIGHT
 - SUPPLY AIR DIFFUSER
 - RETURN AIR GRILL
 - SPRINKLER HEADS
 - HOZE MOUNT SPRINKLERHEAD
 - SIGNAL HOSE TAKE LIGHT FIXTURE



NEW OFFICES FOR
TAP PUBLISHING CO.
CROSSVILLE, TENNESSEE



Charles Pilgrim Architect
8560 Kingston Pike • Suite A202
Knoxville, Tennessee 37919 • (615)683-4741

A202
SERIES

DATE: 2.1.15
DRAWN BY: [Signature]
CHECKED BY: [Signature]

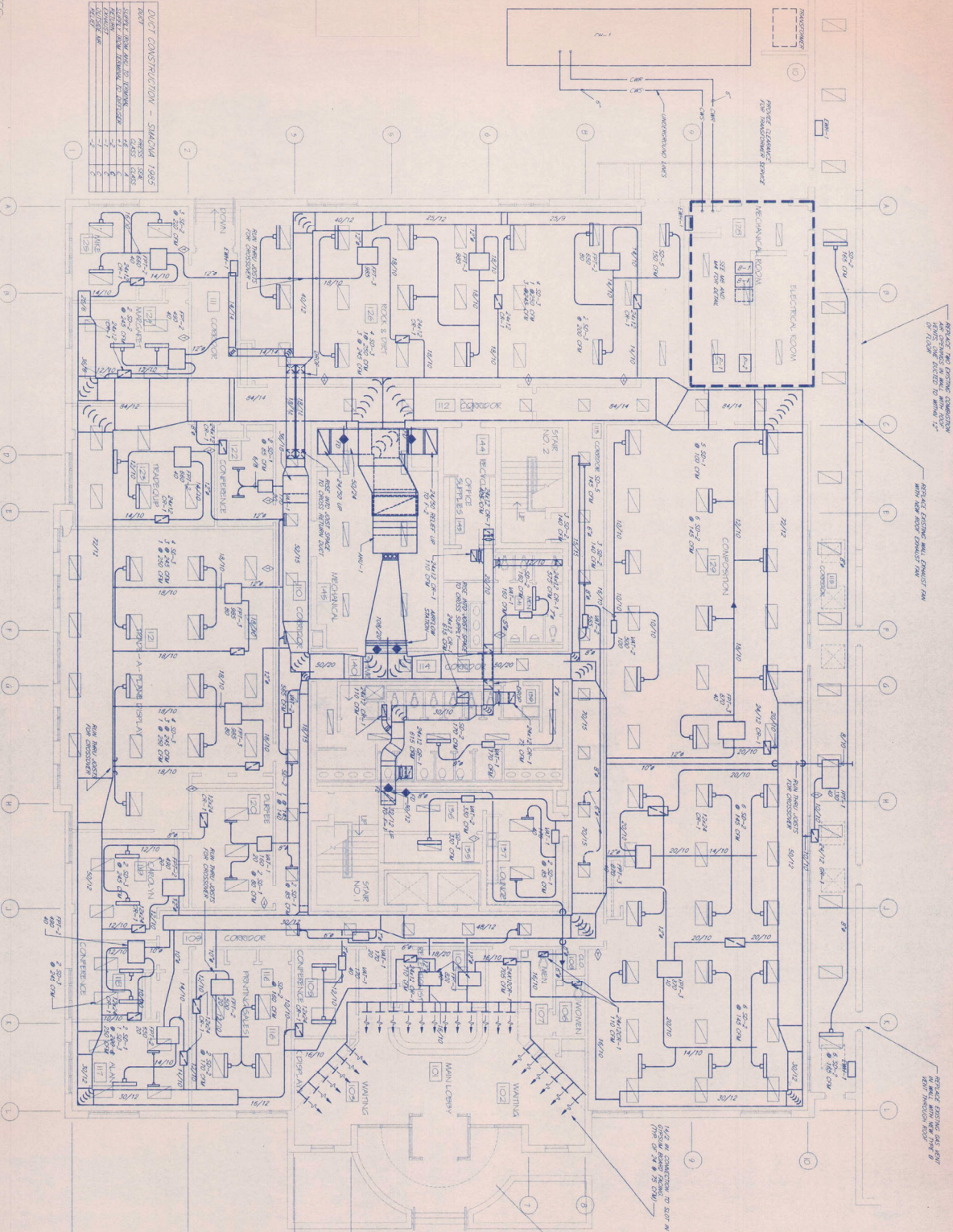
NO.	REVISIONS	DATE
1	01/13/98	A.S.

- NOTES:
1. HIGHLIGHT SHOWN CHANGES AND DEVICES. DO NOT INCLUDE RETURN KEYS OR SIGNALS ON CHANGES.
 2. CONSTRUCTION AND ALL NEW WORK. USE HIGHLIGHT DEVICES WHERE NECESSARY.
 3. ROOMS SHOWN WITH ELECTRICAL SYMBOLS ARE TO BE RELOCATED.
 4. ROOMS SHOWN WITH MECHANICAL SYMBOLS ARE TO BE RELOCATED.
 5. DIMENSIONS SHOWN AT ALL ROOMS ARE TO BE MAINTAINED.
 6. DIMENSIONS SHOWN AT ALL ROOMS ARE TO BE MAINTAINED.
 7. DIMENSIONS SHOWN AT ALL ROOMS ARE TO BE MAINTAINED.
 8. DIMENSIONS SHOWN AT ALL ROOMS ARE TO BE MAINTAINED.
 9. DIMENSIONS SHOWN AT ALL ROOMS ARE TO BE MAINTAINED.
 10. DIMENSIONS SHOWN AT ALL ROOMS ARE TO BE MAINTAINED.

DUCT CONSTRUCTION - STANDARD TABLE

DUCT	SIZE	WALL	INSULATION	FRAMING	SPACING	BRACING
1	18"	1/2"	1"	2"	4"	4"
2	24"	1/2"	1"	2"	4"	4"
3	30"	1/2"	1"	2"	4"	4"
4	36"	1/2"	1"	2"	4"	4"
5	42"	1/2"	1"	2"	4"	4"
6	48"	1/2"	1"	2"	4"	4"
7	54"	1/2"	1"	2"	4"	4"
8	60"	1/2"	1"	2"	4"	4"
9	66"	1/2"	1"	2"	4"	4"
10	72"	1/2"	1"	2"	4"	4"

MECHANICAL
FIRST FLOOR PLAN - MECHANICAL
SCALE: 1/8" = 1'-0"



MECHANICAL LEGEND

[Symbol]	RECTANGULAR DUCT
[Symbol]	ROUND DUCT
[Symbol]	SMOOTH DUCT
[Symbol]	SMOOTH DUCT IN
[Symbol]	SMOOTH DUCT OUT
[Symbol]	SMOOTH DUCT (RADIANT)
[Symbol]	RETURN DUCT
[Symbol]	EXHAUST DUCT
[Symbol]	4\"/>

KEITHS MECHANICAL ASSOCIATES, Inc.
 48 COMPTON FLD. #304
 MEMPHIS, TENN. 38103
 TEL: 901-525-5287
 FAX: 901-525-5287
 SHEETS: 12/89

CHARLES PILGRIM ARCHITECT
 8500 KINGSTON PIKE
 SUITE 4202
 KNOXVILLE, TENN. 37919
 TEL: 615-693-4741

NEW OFFICES FOR
TAP PUBLISHING CO.
 CROSSVILLE, TENNESSEE



Charles Pilgrim Architect
 8500 Kingston Pike • Suite 4202
 Knoxville, Tennessee 37919 • (615)693-4741

REVISIONS

NO.	DATE	BY
1	1/13/89	KEA
2		
3		
4		
5		

SHEETS

DESIGN	0/0/89
DATE	0/0/89
SCALE	1/8" = 1'-0"
JOB NO.	008
SHEET	M-1

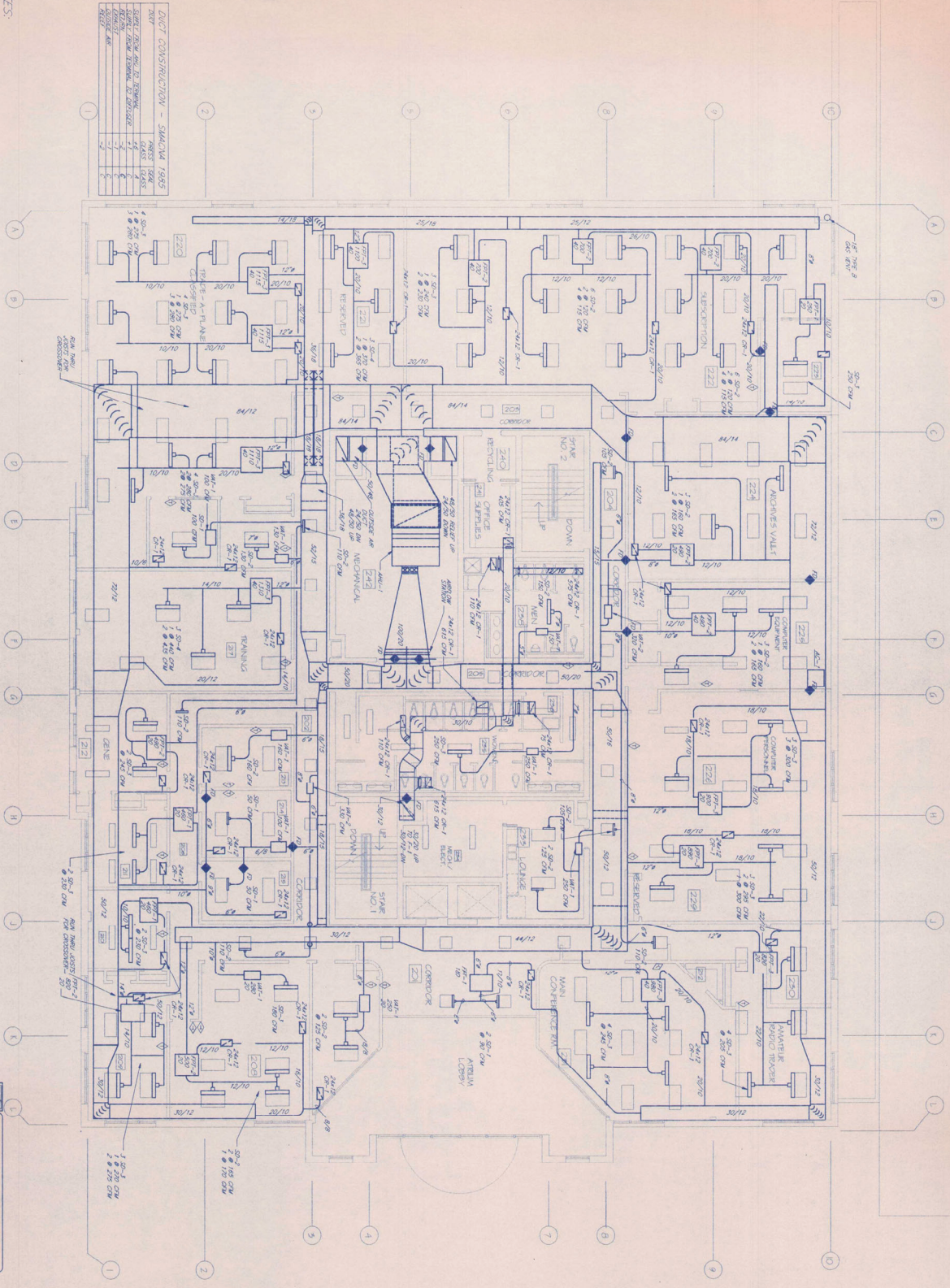
- NOTES:
1. INCLUDE SUPPLY DUCTS AND OUTSIDE AIR DUCTS TO NOT INCLUDE RETURN RELIEF OR EXHAUST DUCTS
 2. CONDENSED AIR, IF THIS SYSTEM, USE RETURN DUCTS WHERE RETURNABLE DUCTS ARE SHOWN ON PLAN
 3. RETURNERS BELOW TRIMMER, EXHAUSTERS INDICATE DUCTS AND REMEDIATION DUCTS ARE SHOWN ON PLAN
 4. PROVIDE MAKING DUCTS AT ALL MAKING DUCTS
 5. DISCONNECT DUCTWORK & DUCTL CONNECTIONS WITH RESTRICTED DRAINAGE PAN

DUCT CONSTRUCTION - STANDARD 1985

DUCT TYPE	THICKNESS	CLASS	TEST
CONDENSED AIR	1/2"	1	1
EXHAUST	1/2"	1	1
RETURN	1/2"	1	1
MAKEUP AIR	1/2"	1	1
RELIABLE	1/2"	1	1



SECOND FLOOR PLAN - MECHANICAL
SCALE: 1/8" = 1'-0"



CONSULTING ENGINEERS
KELSO-REHREN ASSOCIATES, Inc.
 1700 N. CENTRAL AVENUE
 KNOXVILLE, TN 37912
 PHONE: (615) 582-5448
 FAX: (615) 582-5449
 INTERNET: WWW.KELSO-REHREN.COM

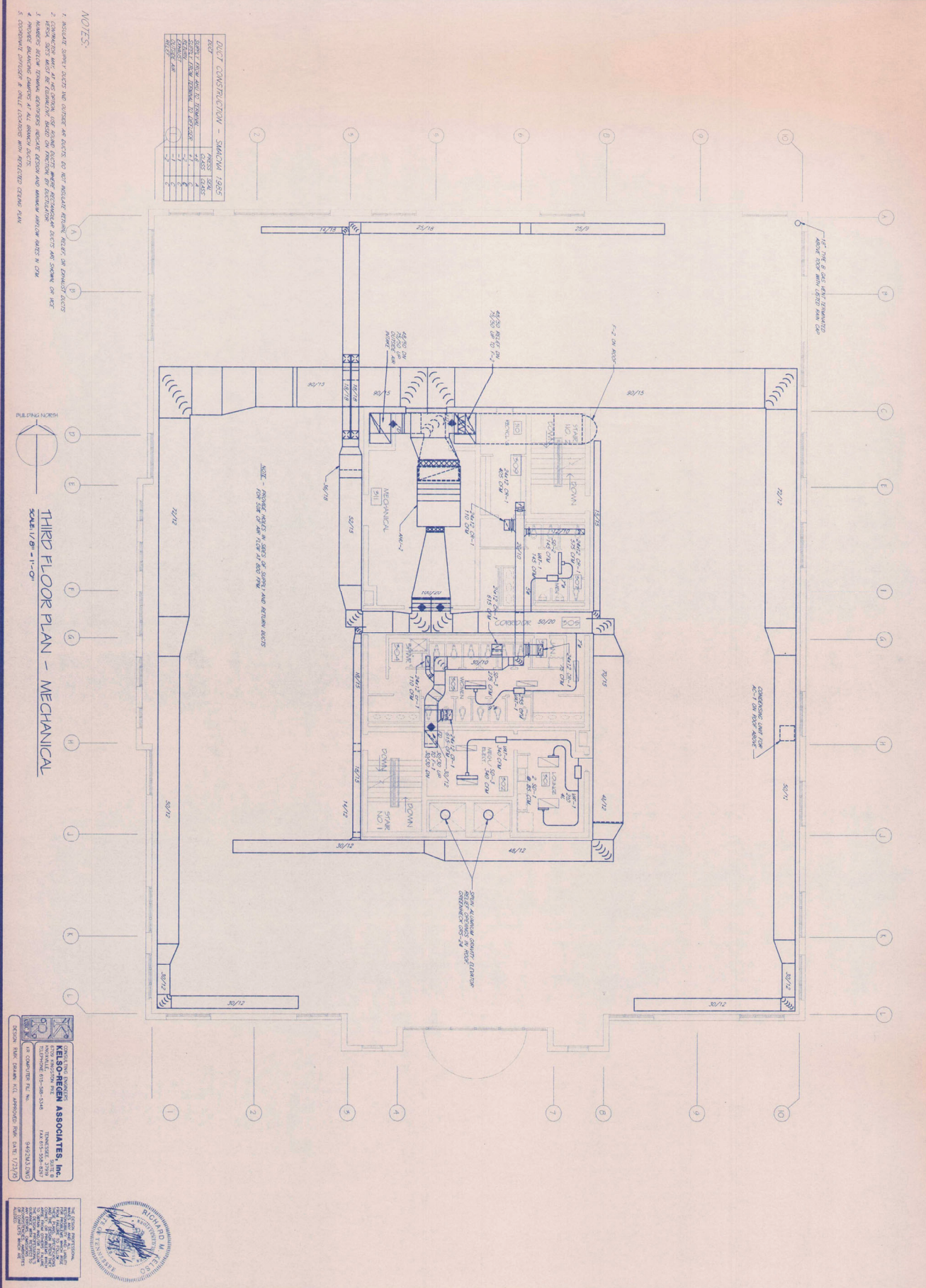


DESIGNER	DATE
SKETCH	6/20/95
SCALE	1/8" = 1'-0"
NO.	444
SHEET	1
OF	2

NEW OFFICES FOR
TAP PUBLISHING CO.
 CROSSVILLE, TENNESSEE

Charles Pilgrim Architect
 8560 Kingston Pike • Suite A202
 Knoxville, Tennessee 37919 • (615) 693-4741

REVISIONS	BY
1	KEL
2	KEL
3	KEL
4	KEL
5	KEL



DUCT CONSTRUCTION - STANDARD 1985

DUCT TYPE	INSULATION	THICKNESS
STEEL	ASBESTOS	1/2"
STEEL	GLASS FIBER	1/2"
STEEL	GLASS FIBER	1/2"
STEEL	GLASS FIBER	1/2"
STEEL	GLASS FIBER	1/2"
STEEL	GLASS FIBER	1/2"
STEEL	GLASS FIBER	1/2"
STEEL	GLASS FIBER	1/2"
STEEL	GLASS FIBER	1/2"
STEEL	GLASS FIBER	1/2"

- NOTES:
1. INSULATE DUCTS AND PIPES TO PREVENT CONDENSATION OF STEAM OR HOT WATER.
 2. PROVIDE VENTS IN SLOPE OF ROOF AND RETURN DUCTS FOR SIZE OF AIR FLOW AT EACH POINT.
 3. PROVIDE VENTS IN SLOPE OF ROOF AND RETURN DUCTS FOR SIZE OF AIR FLOW AT EACH POINT.
 4. PROVIDE VENTS IN SLOPE OF ROOF AND RETURN DUCTS FOR SIZE OF AIR FLOW AT EACH POINT.
 5. PROVIDE VENTS IN SLOPE OF ROOF AND RETURN DUCTS FOR SIZE OF AIR FLOW AT EACH POINT.

THIRD FLOOR PLAN - MECHANICAL
SCALE: 1/8" = 1'-0"

KEILSON-REGEN ASSOCIATES, Inc.
 1070 WASHINGTON PIKE
 CROSSVILLE, TENNESSEE 37615
 PHONE: 615-598-5348
 FAX: 615-598-8839
 OR COMPUTER FILE NO. 9487243.DWG



NO.	DATE	BY	REVISIONS
1	10/20/85	DR	ISSUED FOR PERMITTING
2	11/15/85	DR	REVISED PER PERMITTING

NEW OFFICES FOR TAP PUBLISHING CO.
 CROSSVILLE, TENNESSEE

Charles Pilgrim Architect
 8560 Kingston Pike • Suite A202
 Knoxville, Tennessee 37919 • (615)693-4741

NO.	DATE	BY	REVISIONS