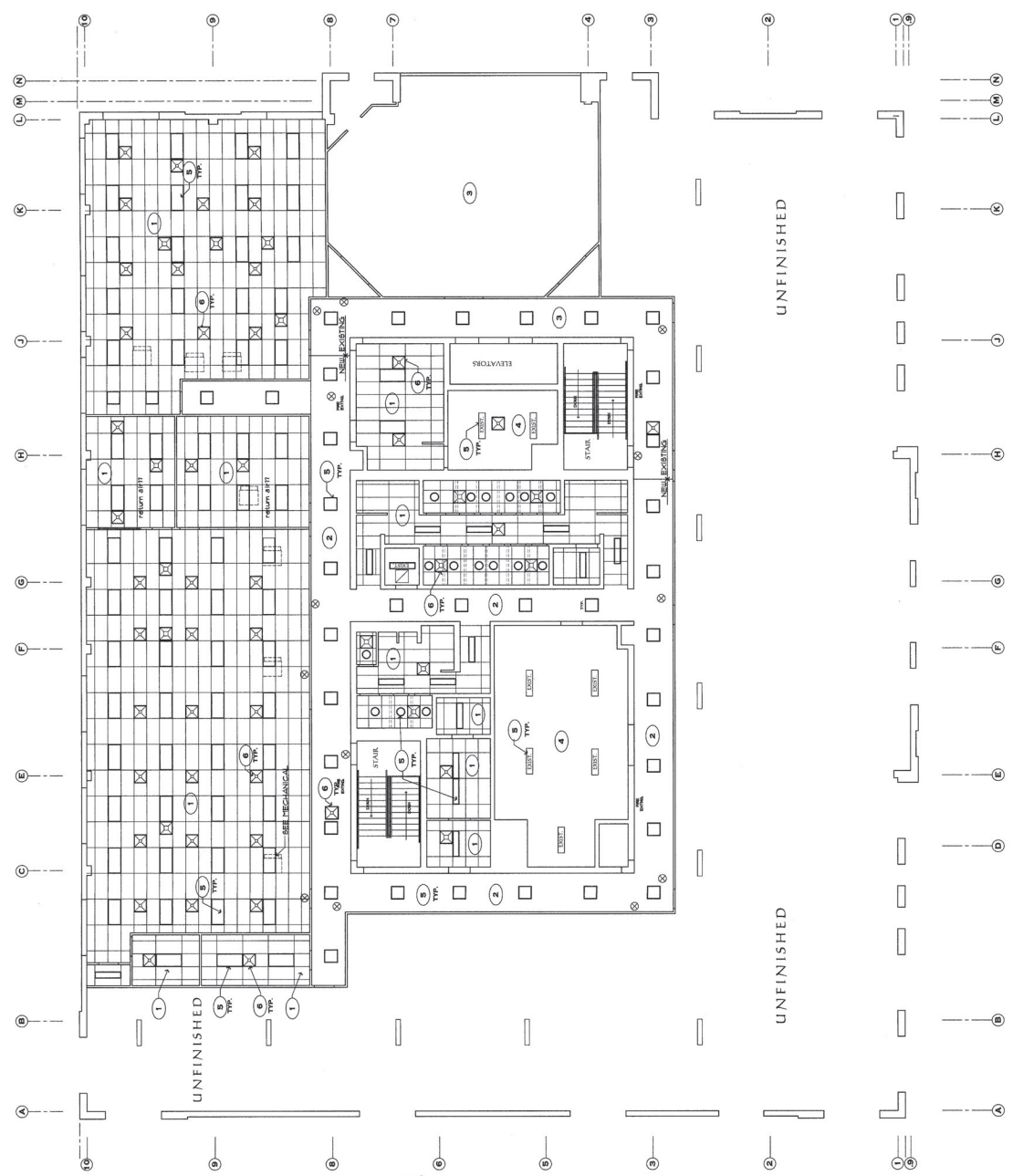




THIS DRAWING DEIGNED FOR:
 ■ PRELIMINARY REVIEW
 ■ CONSTRUCTION PERMITS
 ■ PERMIT REVIEW
 ■ CONSTRUCTION

REV. NO. 1: 14 DEC 06
 REV. NO. 2: 17 FEB 07
 REV. NO. 3:
 REV. NO. 4:
 REV. NO. 5:

A1.5
 01 DEC 06
 CN 2006 06



WALL TYPES

- 1 EXISTING CHIL
- 2 EXISTING METAL STUDS AND DRYWALL
- 3 EXISTING METAL STUDS AND DRYWALL PER S.A. FILE NO. 00150
- 4 EXISTING METAL STUDS AND DRYWALL TO BE REMOVED
- 5 NEW 3/4" METAL STUDS & 1/2" D.C. WITH FULL THICKNESS ACOUSTICAL INSULATION PER S.A. FILE NO. 00150
- 6 NEW 3/4" METAL STUDS & 1/2" D.C. WITH 10" ACOUSTICAL INSULATION AND 1/2" DRYWALL EACH SIDE.

REFLECTED CEILING PLAN NOTES

- 1 SUSPENDED ACOUSTICAL TILE CEILING PER S.A. FILE NO. 4893 SEE DETAIL ON REFERENCE SHEET 7A
- 2 EXISTING DRYWALL CEILING TO REMAIN
- 3 NO CEILING REQUIRED
- 4 LIGHT FIXTURE
- 5 GRILLE OR REGISTER
- 6 SPRINKLER HEAD SEE SHEET PP-1 FOR LOCATIONS

1 THIRD FLOOR REFLECTED CEILING PLAN
 A1.5 SCALE: 1/8" = 1'-0"

- GENERAL NOTES:**
1. COORDINATE WITH ALL OTHER TRADES IN FIELD AND EXISTING STRUCTURAL.
 2. ROUTE DUCTWORK AS NEAR AS GENERALLY ABOVE WATER PIPING.
 3. COORDINATE AND ADJUST EXISTING MECHANICAL WITH ARCHITECTURAL REFLECTED CEILING PLAN.
 4. VOLUME BOXES SHOWN THAT THESE ARE TO BE REMOVED. ACCESS PANELS AND CONTROLS SHALL BE RELOCATED TO NEW SYSTEM.
 5. CONNECT ALL CONTROLS FOR NEW EXISTING EXHAUST FAN AS REQUIRED TO MAINTAIN EXISTING FLOW AS SHOWN.
 6. CONTRACTOR SHALL REBALANCE EXISTING EXHAUST FAN AS REQUIRED TO MAINTAIN EXISTING FLOW AS SHOWN.
- NOTES:**
1. EXISTING VARIABLE AIR VOLUME BOX TO BE REMOVED. RELocate EXISTING SUPPLY TRAY TO DISCHARGE OF BOX AND ROUTE AS SHOWN.
 2. DUCTWORK PASSES OVER THE TOP PARTITION. VERTICAL CLEARANCE SHOWN.

CHARLES PIGGIM ASSOCIATES
 108 SHARBURN ROAD
 Knoxville Tennessee 37923
 (865) 476-2825 • FAX (865) 476-2993
 • SUITE C 203

**RENOVATIONS TO THIRD FLOOR
 TAP PUBLISHING COMPANY**
 129 EAST DIVISION ROAD • OAK RIDGE, TENNESSEE
 FLOOR PLAN - HVAC

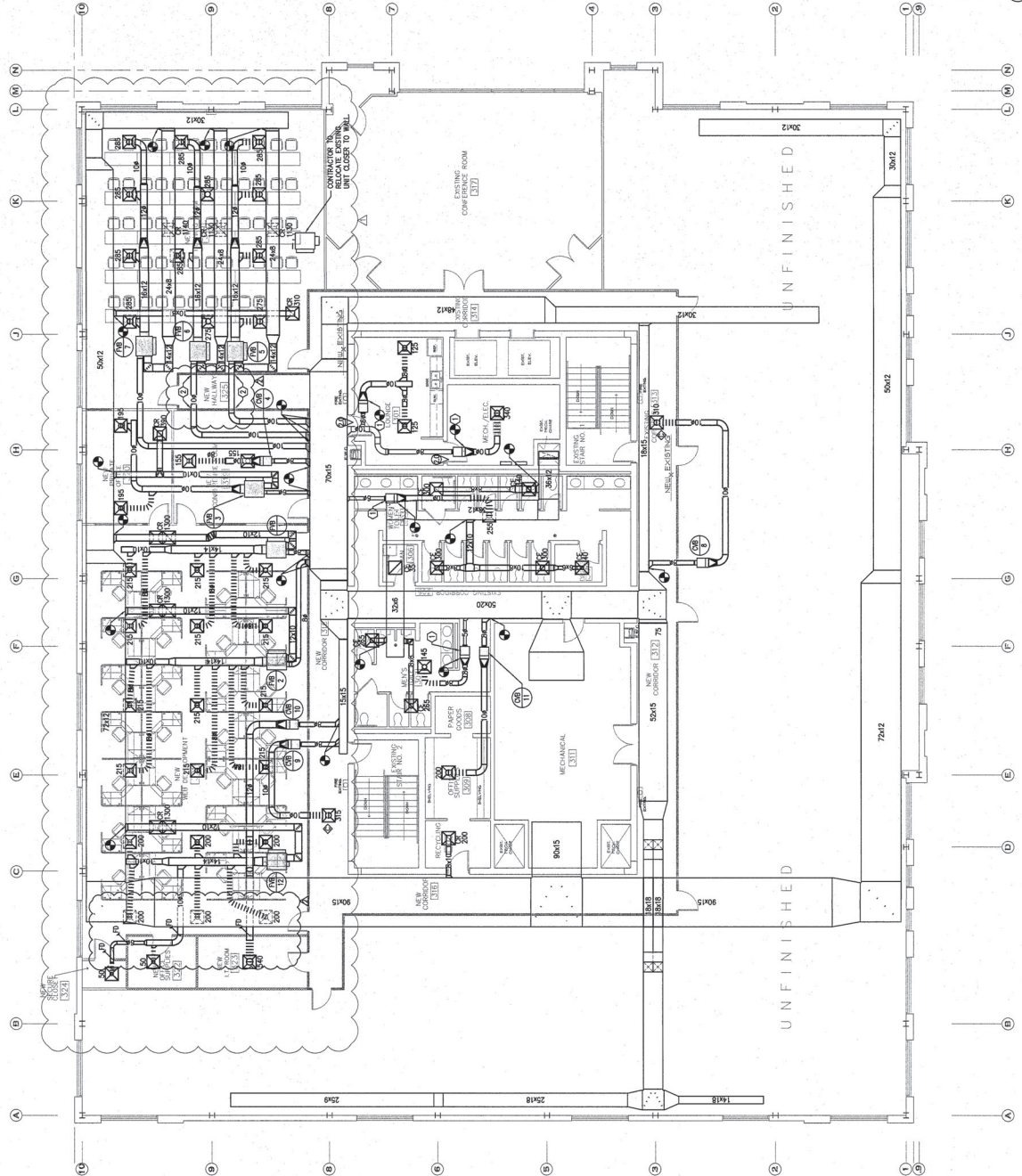
THIS DRAWING ISSUED FOR PRELIMINARY REVIEW
 CONSTRUCTION PERMITS
 ■ CONSTRUCTION

REV. NO. 1: JAN 07
 REV. NO. 2: FEB 07
 REV. NO. 3:
 REV. NO. 4:
 REV. NO. 5:



WWR
 W. W. R. (WWR)
 Mechanical Engineering
 2417 Bell Curve Pike
 Knoxville, TN 37923
 Phone: (865) 592-2431
 Fax: (865) 592-2434

1-HOUR FIRE RATED WALL



THIRD FLOOR PLAN - WASTE
 SCALE: 1/8" = 1'-0"

M-1.1
 25 MAY 06
 CN 8006.06